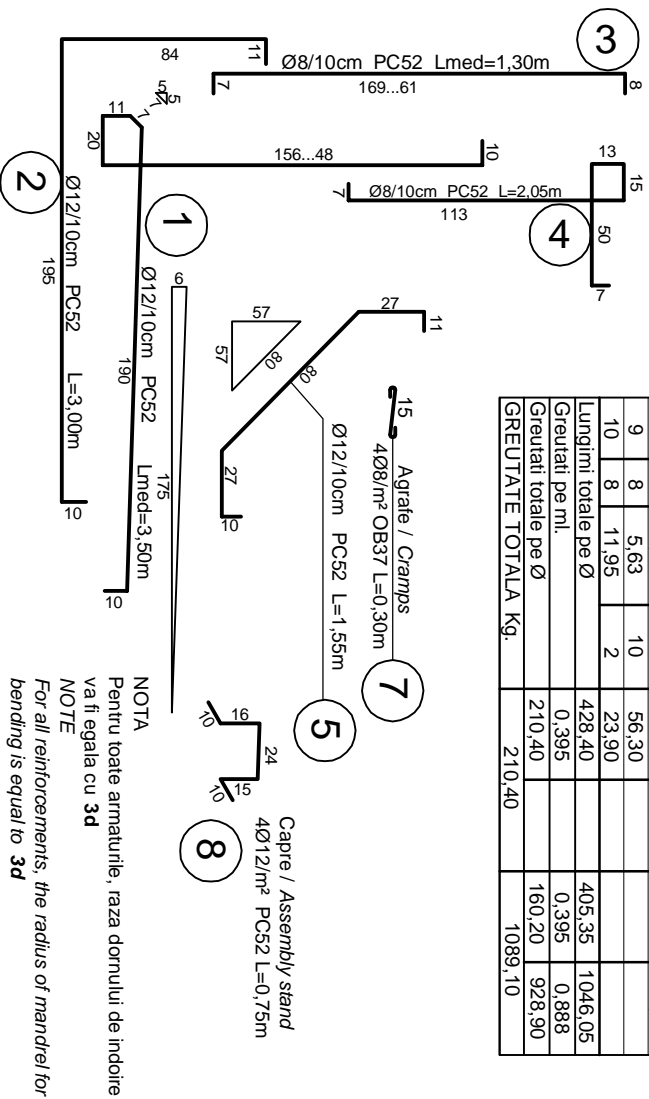
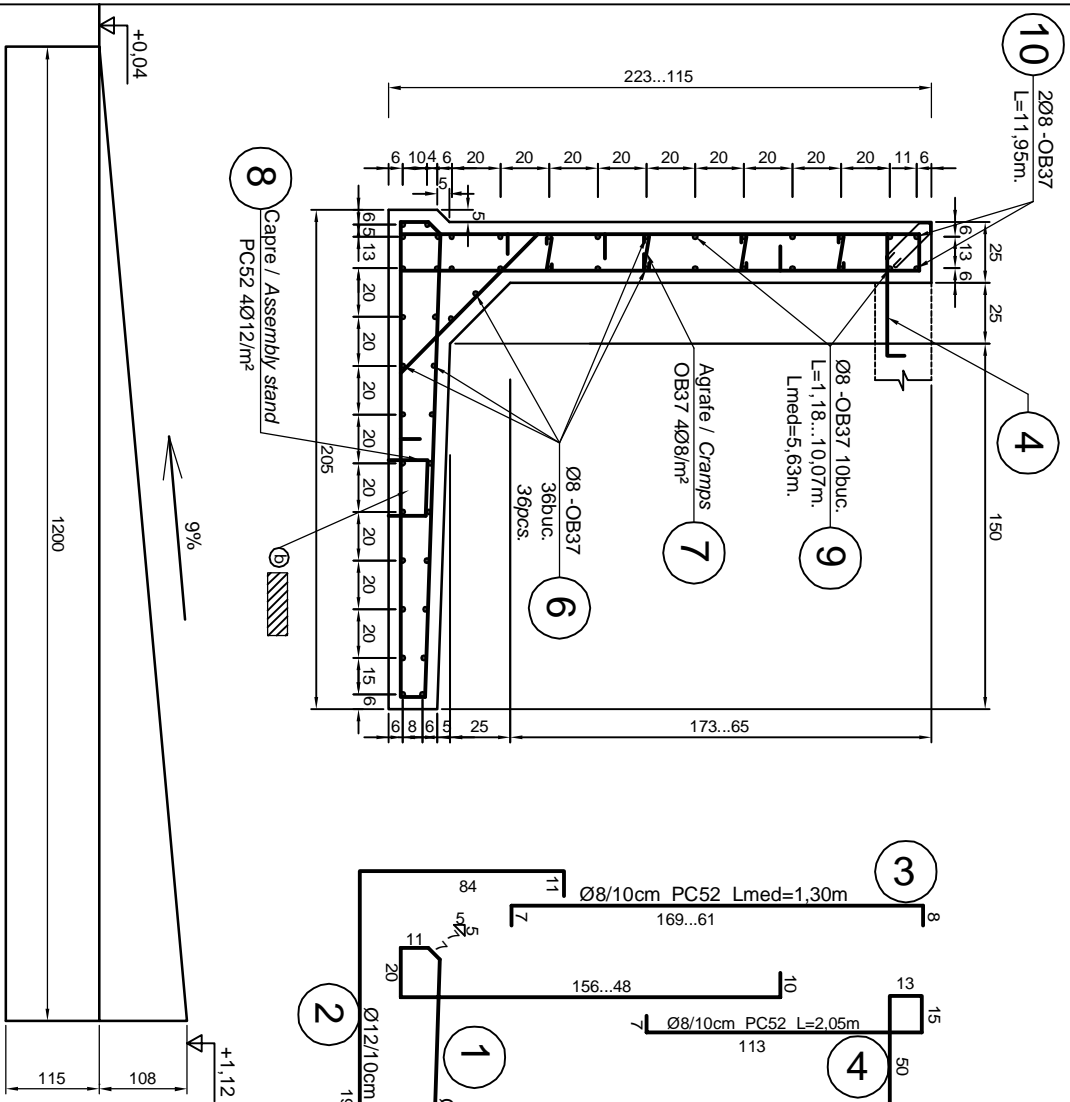


SECTIUNEA 1-1 DIN BETON ARMAT MONOLIT (ZRV-LINE) MONOLITH REINFORCED CONCRETE SECTION 1-1 (ZRV- RAILWAY LINE)

SC. 1:20

EXTRAS ARMATURA BILL OF REINFORCEMENT

| Marca Mark | Ø | Lungimea unei bare Bar length | Nr. Baze No. pcs. | Lungimi pe diametre / Lengths onto diameters | Ø8 | Ø8 | Ø12 |
|----------------------|----|-------------------------------|-------------------|--|--------|----|---------|
| 1 | 12 | 3.50 | 121 | | | | 423.50 |
| 2 | 12 | 3.00 | 121 | | | | 363.00 |
| 3 | 8 | 1.30 | 121 | | | | 157.30 |
| 4 | 8 | 2.05 | 121 | | | | 248.05 |
| 5 | 12 | 1.55 | 121 | | | | 187.55 |
| 6 | 8 | 1.90 | 36 | 428.40 | | | |
| 7 | 8 | 0.30 | 80 | 24.00 | | | |
| 8 | 12 | 0.75 | 96 | | | | 72.00 |
| 9 | 8 | 5.63 | 10 | 56.30 | | | |
| 10 | 8 | 11.95 | 2 | 23.90 | | | |
| Lungimi totale pe Ø | | | | 428.40 | | | 405.35 |
| Greutati pe ml. | | | | 0.395 | | | 0.395 |
| Greutati totale pe Ø | | | | 210.40 | | | 160.20 |
| GREUTATE TOTALA Kg. | | | | | 210.40 | | 1089.10 |



- ⊕ BETON ARMAT, vibrat : C 25/30 -P4-T3-IIA 32.5/ 0...16
 - ⊖ OTEL BETON : OB37, PC52
 - LAMINATE : S235J2G3 (OL37)
 - ⊕ REINFORCED CONCRETE, vibrated : C 25/30 -P4-T3-IIA 32.5/ 0...16
 - ⊖ REINFORCEMENT : OB37; PC52
 - ROLLED STEEL : S235J2G3 (OL37)
- NSS=±0,00

NOTA
Pentru toate armaturile, raza donului de indoire va fi egala cu 3d

NOTE
For all reinforcements, the radius of mandrel for bending is equal to 3d

| Index | Date | Modification/Revision | Projectant Designer | Approved Consultant | Approved CFR |
|-------|------|-----------------------|---------------------|---------------------|--------------|
| D | | | | | |
| C | | | | | |
| B | | | | | |
| A | | | | | |

GUVERNUL ROMANIEI ROMANIAN GOVERNMENT
PROIECT FINANȚAT DE UNIUNEA EUROPEANĂ A EUROPEAN UNION FINANCED PROJECT

CLIENT / CLIENT



C.N.C.F. "C.F.R." - S.A.

GRUPPO FERROVIE DELLO STIVO
TALFER
WILSON
OBERMEYER
FLAMEN + BERATUNG GmbH
TECNIC
Consulting Engineers

| CONSULTANT / CONSULTANT | Set proiect | Project manager | Date | Signature |
|-------------------------|-----------------------|---------------------|---------|-----------|
| Approved | Project manager | R. Luzzi | 12.2011 | |
| Approved | Coordonator Sezionari | C. Gambelli | 12.2011 | |
| Approved | Section 1 Coordinator | | | |
| Checked | Verifier | Giuseppe Fioravanti | 12.2011 | |

| SUBCONTRACTANT / SUBCONTRACTOR | Responsabil Subcontractant | Projectant | Date | Signature |
|--------------------------------|----------------------------|------------------------|---------|-----------|
| Approved | Subcontractant Responsible | A. Stanclu - Dinulescu | 12.2011 | |
| Incomplet | Projectant | Popescu Remus Dan | 12.2011 | |
| Elaborat | Designer | | | |

Denumire desen / Drawing Title :

ACCES RAMPA - ZID DE SPRJIN - LINIE /
RETAINING WALL OF ACCESS RAMP - RAILWAY LINE

Codificare / Codification System

| | | | | | | | | | | | | | | | | | | | | |
|---|---|---|---|---|---|---|---|---|---|---|---|---|---|---|---|---|---|---|---|---|
| E | A | 5 | 1 | 0 | 1 | E | 0 | 0 | B | C | A | C | 0 | 0 | 0 | X | 0 | 0 | 5 | 1 |
|---|---|---|---|---|---|---|---|---|---|---|---|---|---|---|---|---|---|---|---|---|

3A4(630x297)=0,19m²