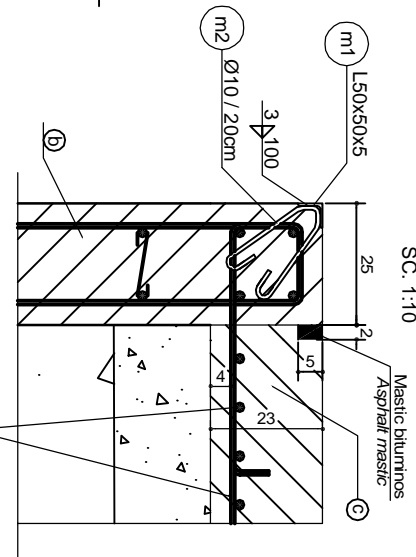


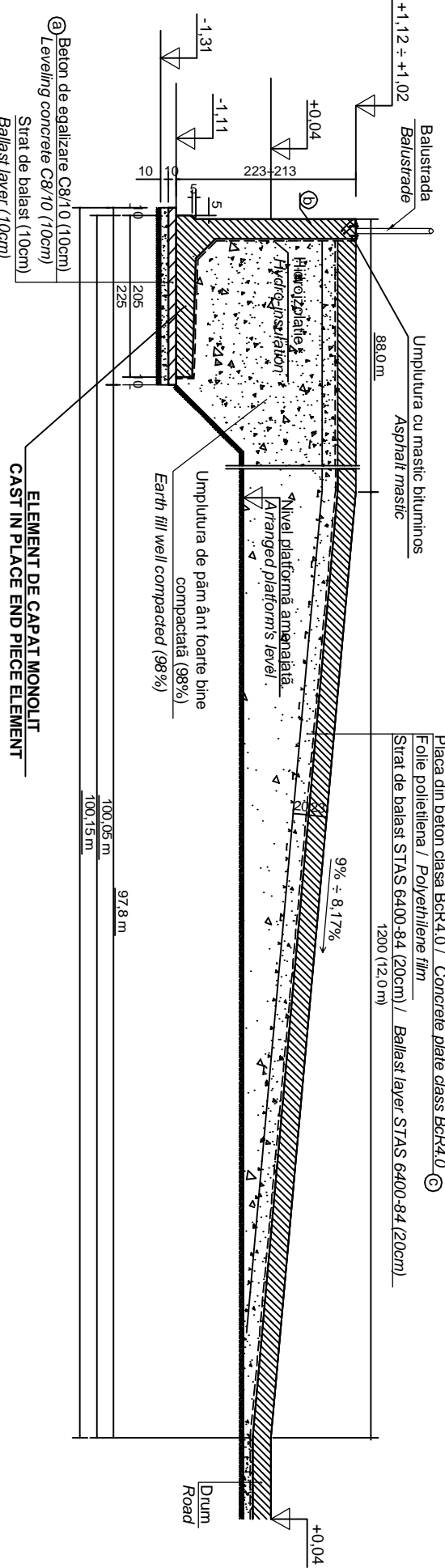
A - A (cotele dimensiunilor in cm) SC. 1:50

DET. "a" SC. 1:10



- ① BETON SIMPLU, vibrat (egalizare): C 8/10 -P4-T3-IIA 32,5/0...31
- ② BETON ARMAT, vibrat: C 25/30 -P4-T3-IIA 32,5/0...16
- ③ BETON ARMAT PLATFORMA, vibrat: BcR4,0 -P8-T3-IIA 32,5/0...16
- ④ OTEL BETON: OB37; PC52; STNB LAMINATE: S235J2G3 (OL37)
- ⑤ PLAIN CONCRETE, vibrat (leveling): C 8/10 -P4-T3-IIA 32,5/0...31
- ⑥ REINFORCED CONCRETE, vibrat: C 25/30 -P4-T3-IIA 32,5/0...16
- ⑦ PLATFORM REINFORCED CONCRETE, vibrat: BcR4,0 -P8-T3-IIA 32,5/0...16
- ⑧ REINFORCEMENT: OB37; PC52; STNB ROLLED STEEL: S235J2G3 (OL37)

B - B (cotele dimensiunilor in cm) SC. 1:50



ELEMENT DE CAPAT MONOLIT CAST IN PLACE END PIECE ELEMENT

D					
C					
B					
A					
Index	Date	Modificari	Proiectant	Approbat	Approbat CFR
		Modification/Revision	Designer	Approved Consultant	Approved CFR

CLIENT / CLIENT

GUVERNUL ROMANIEI  
ROMANIAN GOVERNMENT

PROIECT FINANȚAT DE UNIUNEA EUROPEANĂ  
EUROPEAN UNION FINANCED PROJECT

C.N.C.F. "C.F.R." - S.A.

Approbat	Set proiect		
Approved	Project manager	R. Luzzi	12.2011
Approbat	Coordonator Secțiune I	C. Gambelli	12.2011
Verificat	Verificator	Giuseppe Fioravanti	12.2011
Checked	Verifier		

Approbat	Responsabil Subcontractant		
Approved	Subcontractant Responsible	A. Stancu - Dinulescu	12.2011
Elaborat	Proiectant	Popescu Remus Dan	12.2011

Reabilitarea liniei de cale ferata Brasov - Simeria, parte componentă a a coridorului IV Pan European, pentru circulația trenurilor cu viteză maximă de 160 km/h.

Tronsoani: Brasov - Sighisoara

Rehabilitation of the railway line Brasov - Simeria, component part of the IV Pan-European Corridor, for the trains circulation with maximum speed of 160 km/h.

Section: Brasov - Sighisoara

Faza / Phase: D.E. / E.D.

Denumire desen / Drawing Title:

RAMPA - SECTIUNI CARACTERISTICE - "DREAPTA"  
LOADING LEDGE - REPRESENTATIVE SECTIONS - "RIGHT"

Scaza / Scale: 1:50

Lot/Lot: 01/01

Nr./No: 01/01

Codificare / Codification System	3A4(630x297)=0,19m <sup>2</sup>
----------------------------------	---------------------------------