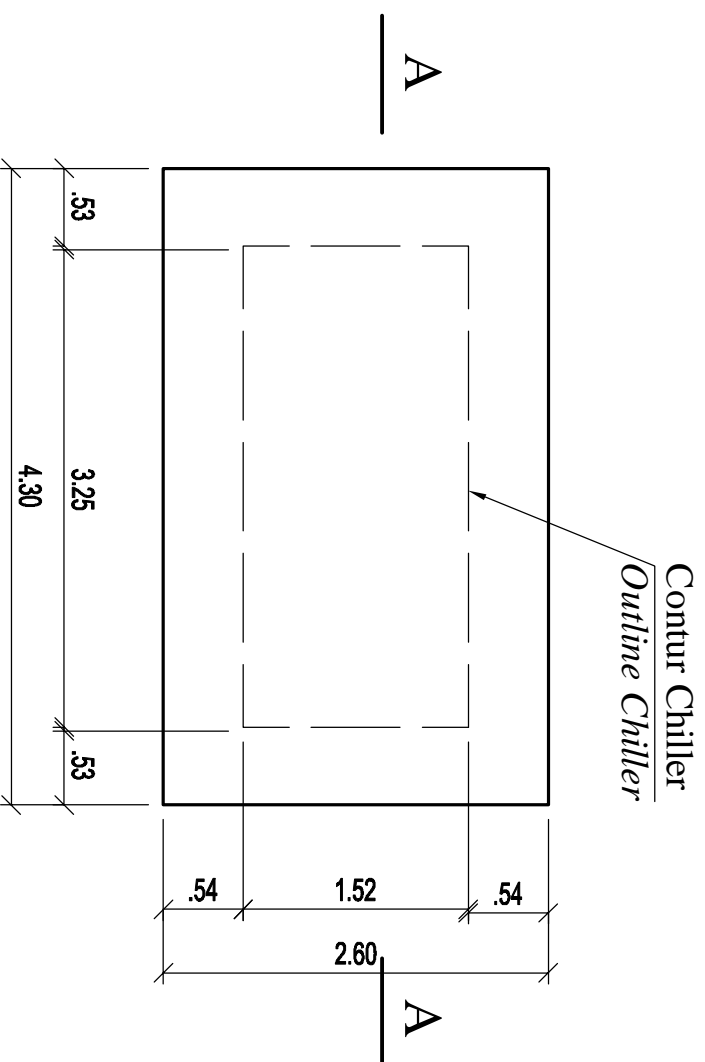


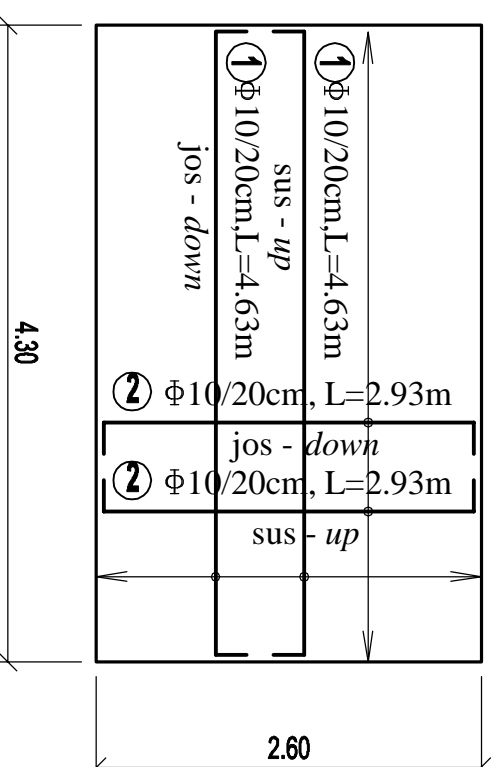
Plan Platforma - Platform Plan

Sc. 1:50



Plan armare platforma

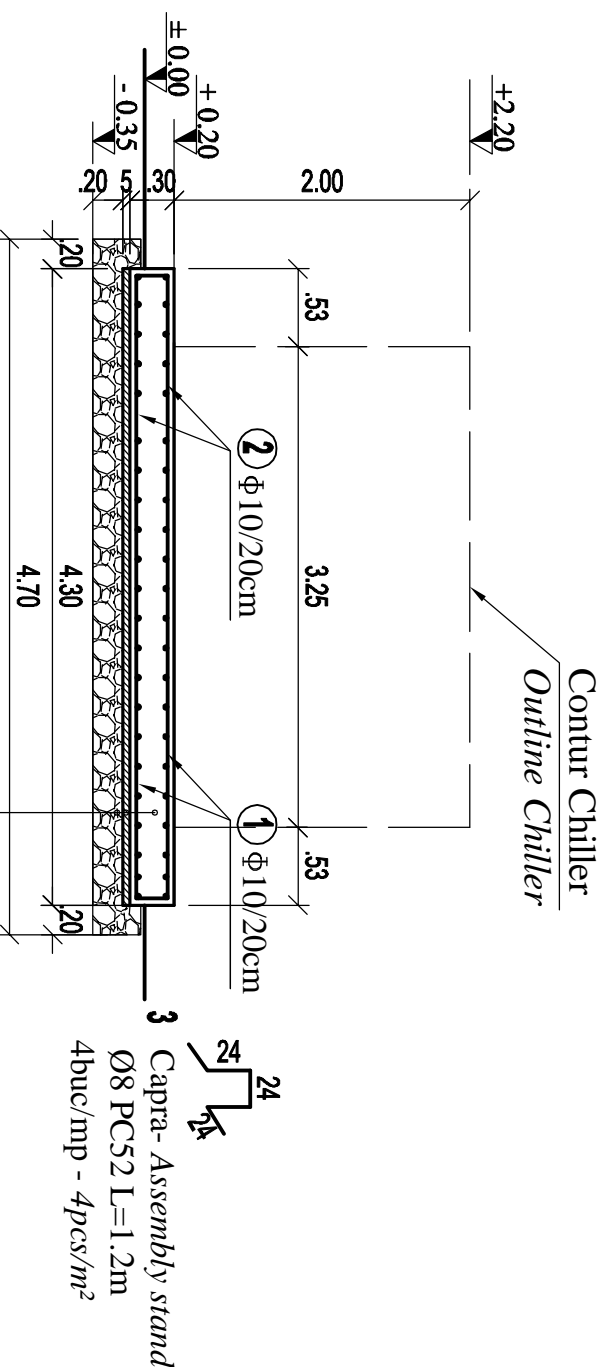
Sc. 1:50



MATERIALE
 BETON SIMPLU: C 6/7.5
 BETON ARMAT : C12/15
 OTEL BETON : PC52
 LAMINATE : S235J2G3 (OL37.2n)
 Acoperirea cu beton a armaturilor de rezistență : c = 4.5 cm.
MATERIALS
 CONCRETE : C 6/7.5
 REINFORCED CONCRETE : C12/15
 REINFORCEMENT : PC52
 ROLLED STEEL : S235J2G3 (OL37.2n)
 ROLLED STEEL : S235J2G3 (OL37.2n)
 Concrete covering of the main reinforcing bars : c = 4.5 cm.

Secțiunea A - A - A Section

Sc. 1:50



- Placa de beton armat - 30 cm
- Concrete slab - 30 cm
- Strat de egalizare din beton simplu- 5cm
- Concrete equalization layer - 5cm
- Strat de balast - 20cm
- Ballast layer - 20cm

EXTRAS ARMATURA PLATFORMA - BILL OF REINFORCEMENT for CONCRETE PLATFORM

Marca	Φ	buc	lung (m)	PC 52	
				Φ8	Φ10
1	10	42	4.63	194.46	
2	10	88	2.93	257.84	
3	8	139	1.20	166.80	
Total m/Φ				166.80	452.30
Kg/ m/Φ				0.395	0.617
Kg /Φ				65.89	279.07
TOTAL Kg				344.96	

± 0.00 = NSS proiectat / Superior level of the railway track

Cotarea armarii in "cm";
 Cotarea confectionilor metalice in "mm"
 Reinforcement dimensions in "cm";
 Dimensions of metallic elements in "mm"

Index	Data	Modificari / Revision	Proiectant / Designer	Approbat Consultant / Approved Consultant	Approbat CFR / Approved CFR
D					
C					
B					
A					

GUVERNUL ROMANIEI
PROIECT FINANȚAT DE UNIUNEA EUROPEANĂ A EUROPEAN UNION FINANCED PROJECT

C.N.C.F. "C.F.R." - S.A.

ITALFER
 GRUPPO FERROVIE DELLO STATO
 Joint Venture leader

SCOTT WILSON

OBERMAYER
 PLANEN + BERATEN GmbH
 Consulting Engineers

CONSULTANT / CONSULTANT

Approbat / Approved	Set proiect / Project manager	Data / Date	Semnatura / Signature
Approbat / Approved	R. Luzza	12. 2011	
Approbat / Approved	Coordonator Sectiune 1 / Section 1 Coordinator	12. 2011	
Verificat / Checked	Verificator / Verifier	12. 2011	

SUBCONTRACTANT / SUBCONTRACTOR

Approbat / Approved	Responsabil Subcontractant / Subcontractant Responsible	Data / Date	Semnatura / Signature
Approbat / Approved	A. Stanciu - Dinulescu	12. 2011	
Intocmit / Elaborated	Proiectant / Designer	12. 2011	

Reabilitarea liniei de cale ferata Braşov - Simeria, parte componentă a coridorului IV Pan European, pentru circulația trenurilor cu viteză maximă de 160 km/h.
 Tronsoani : Braşov - Sighişoara
 Rehabilitation of the railway line Braşov - Simeria, component Part of the IV Pan-European Corridor, for the trains circulation with maximum speed of 160 km/h.
 Section : Braşov - Sighişoara

Project/Project
 2004/RO/16/P/PA003
 Faza / Phase:
 D.E. / E.D.

Denumire desen / Drawing Title :
STATIA BRASOV CENTRU OPERATIONAL DE COMANDA
PLATFORMA BETON PENTRU CHILLER
BRASOV RAILWAY STATION OPERATIONAL COMMAND CENTER
CONCRETE PLATFORM FOR CHILLER

Codificare / Codification System

E	A	5	1	0	1	E	0	1	B	B	C	C	0	0	1	9	0	2	4	0
---	---	---	---	---	---	---	---	---	---	---	---	---	---	---	---	---	---	---	---	---

Scara / Scale
 1 : 50
 LOT / LOT
 Nr. / No
 01 / 01