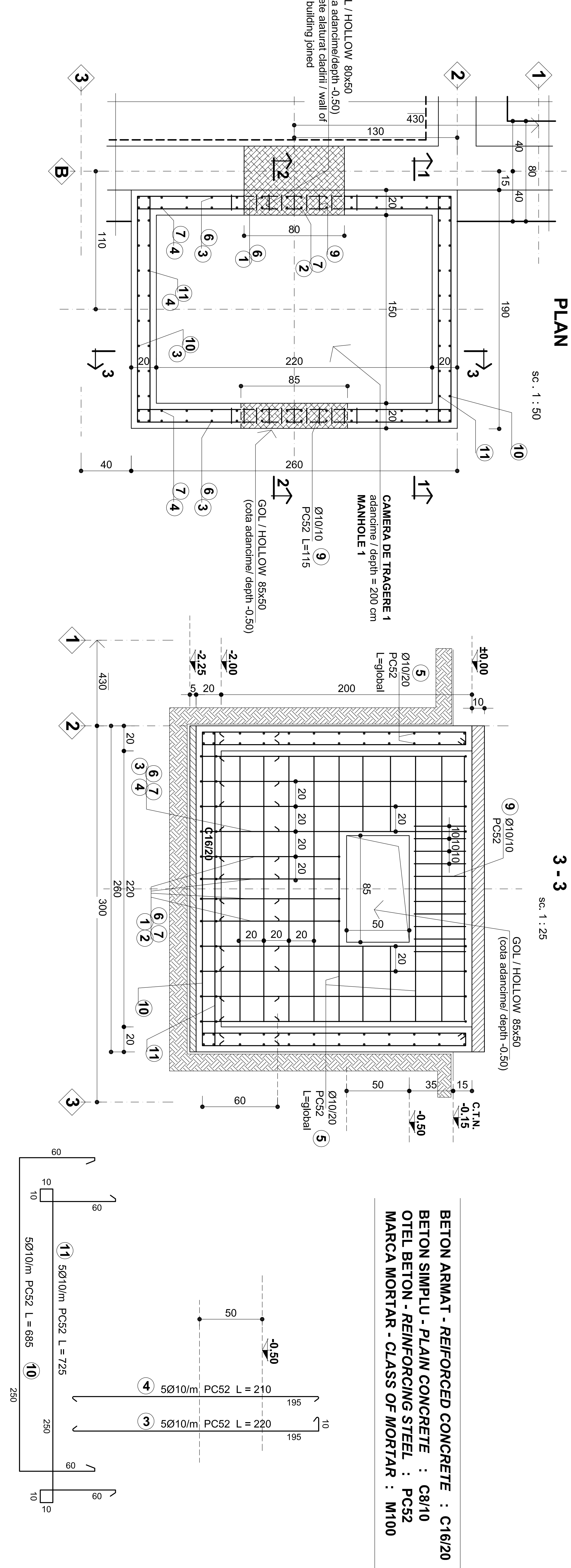
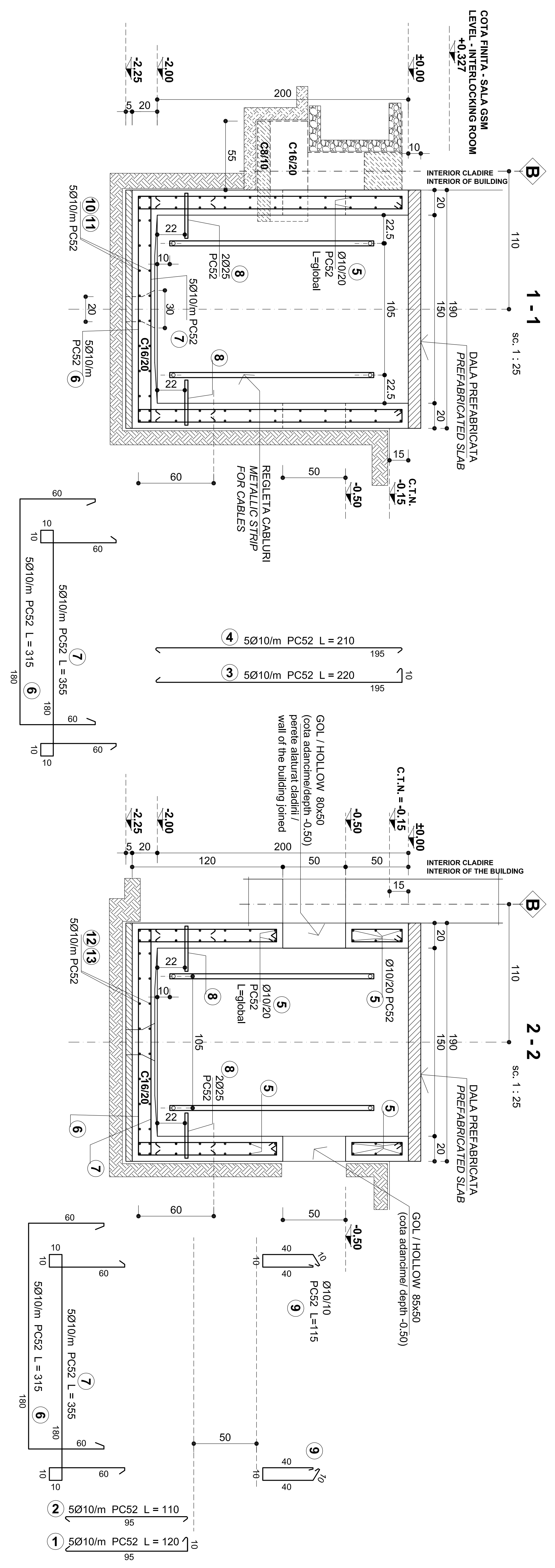


TABLEAU ARMARE - REINFORCEMENT TABLE

ELEM.	MARCA	Ø	NR. BUC.	LUNG. BARA -m-	LUNGIMIDIAM.	
					PC52	
1	10	8	120	9.6	Ø10	
2	10	8	110	8.8	Ø25	
3	10	48	220	105.6		
4	10	48	195	93.6		
5	10	1	220.00	220.0		
6	10	16	3.15	50.4		
7	10	16	3.55	56.8		
8	25	4	1.00	56.8	4.0	
9	10	22	1.15	25.3		
10	10	12	6.85	82.2		
11	10	12	7.25	87.0		
LUNGIME / DIAMETRE					739.3	4.0
LUNGIME / m / DIAMETRE					0.617	3.853
GREUTATE / DIAMETRE					456.1	15.4
TOTAL KG. :					4720	



BETON ARMAT - REINFORCED CONCRETE : C16/20
 BETON SIMPLU - PLAIN CONCRETE : C8/10
 OTEL BETON - REINFORCING STEEL : PC52
 MARCA MORTAR - CLASS OF MORTAR : M100

CLIENT / CLIENT

CFR C.N.C.F. "C.F.R." - S.A.

GUVERNUL ROMANIEI
 ROMANIAN GOVERNMENT

PROIECT FINANȚAT DE UNIUNEA EUROPEANA
 EUROPEAN UNION FINANCED PROJECT

CONSULTANT / CONSULTANT

SCOTT WILSON **TECNIC**
 FLAMEN + BERATEN GmbH Consulting Engineers

Approved	Project manager	R. Luzzi	12.2011	
Approved	Coordinator/Section 1	C. Gambelli	12.2011	
Verified	Section 1 Coordinator			
Checked	Expert Verifier	Giuseppe Fioravanti	12.2011	
	Checking Expert			

SUBCONTRACTANT / SUBCONTRACTOR

ARREX

Approved	Responsabil Subcontractant	A. Stancu - Dinulescu	12.2011	
Approved	Subcontractor Responsible			
Elaborat	Designer	Anca Rus	12.2011	

Reabilitarea liniei de cale ferata Brasov - Simeria, parte componenta a coridorului IV Pan European, pentru circulatia trenurilor cu viteza maxima de 160 km/h.
 Tronsoani : Brasov - Sighisoara
 Rehabilitation of the railway line Brasov - Simeria, component Part of the IV Pan-European Corridor, for the trains circulation with maximum speed of 160 km/h.
 Section : Brasov - Sighisoara

Project/Project
 2004/R016/PFA/003
 Faza / Phase:
 D.E. / E.D.

Denumire desen / Drawing Title :
 Stati cf STUPINI / STUPINI Railway station
 PLAN SI DETALII CAMERA DE TRAGERE TIP 1 - Cladire container C.E. tip
 PLAN and DETAILS MANHOLE TYPE 1 - Typical I.S. shelter building

Codificare / Codification System
 E A S I 0 1 E 0 3 B Z C C 0 0 0 X 0 0 3 0

Scara / Scale
 1:25 1:50

Lot / LOT

Nr. / No
 01 / 01