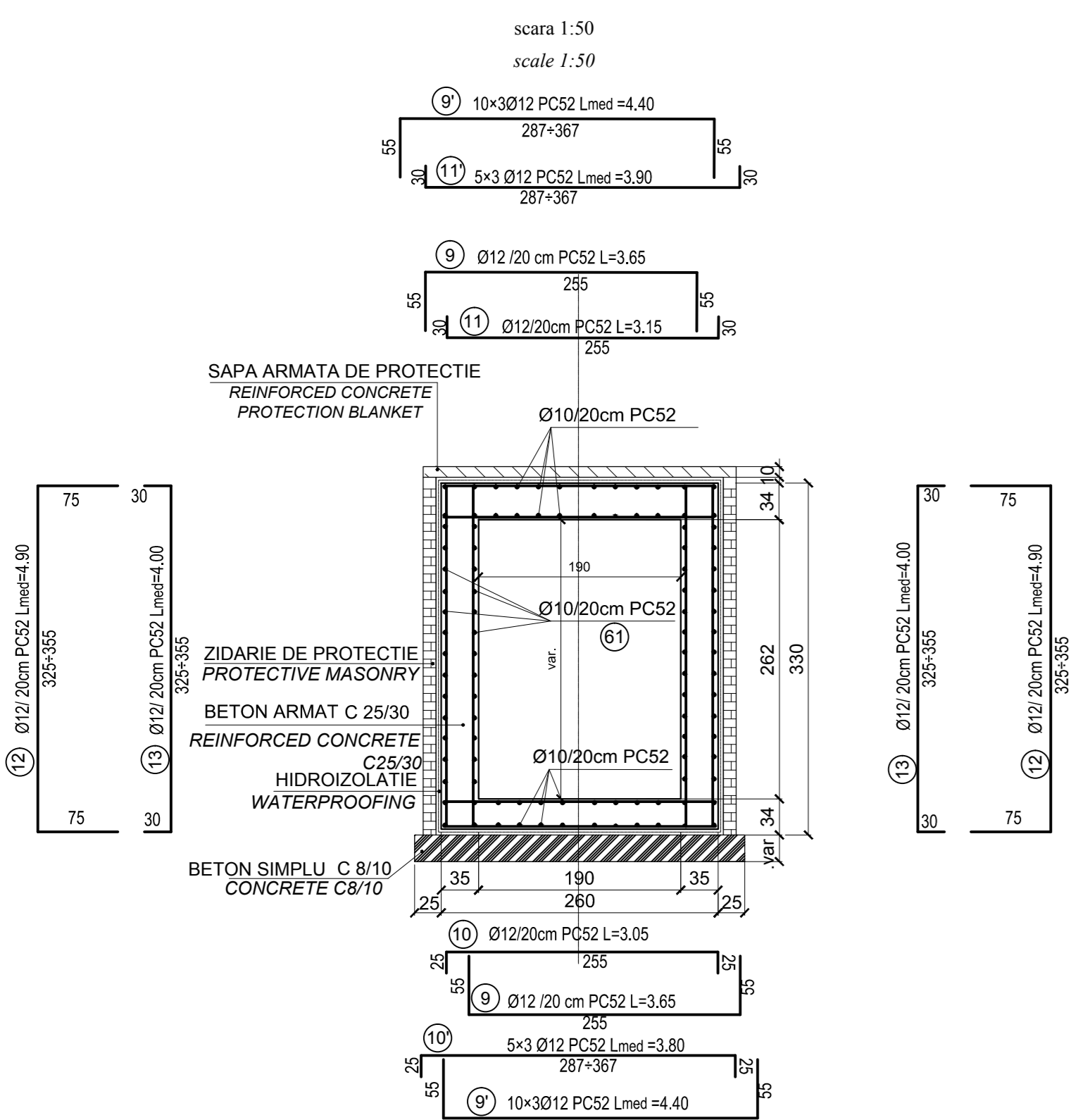
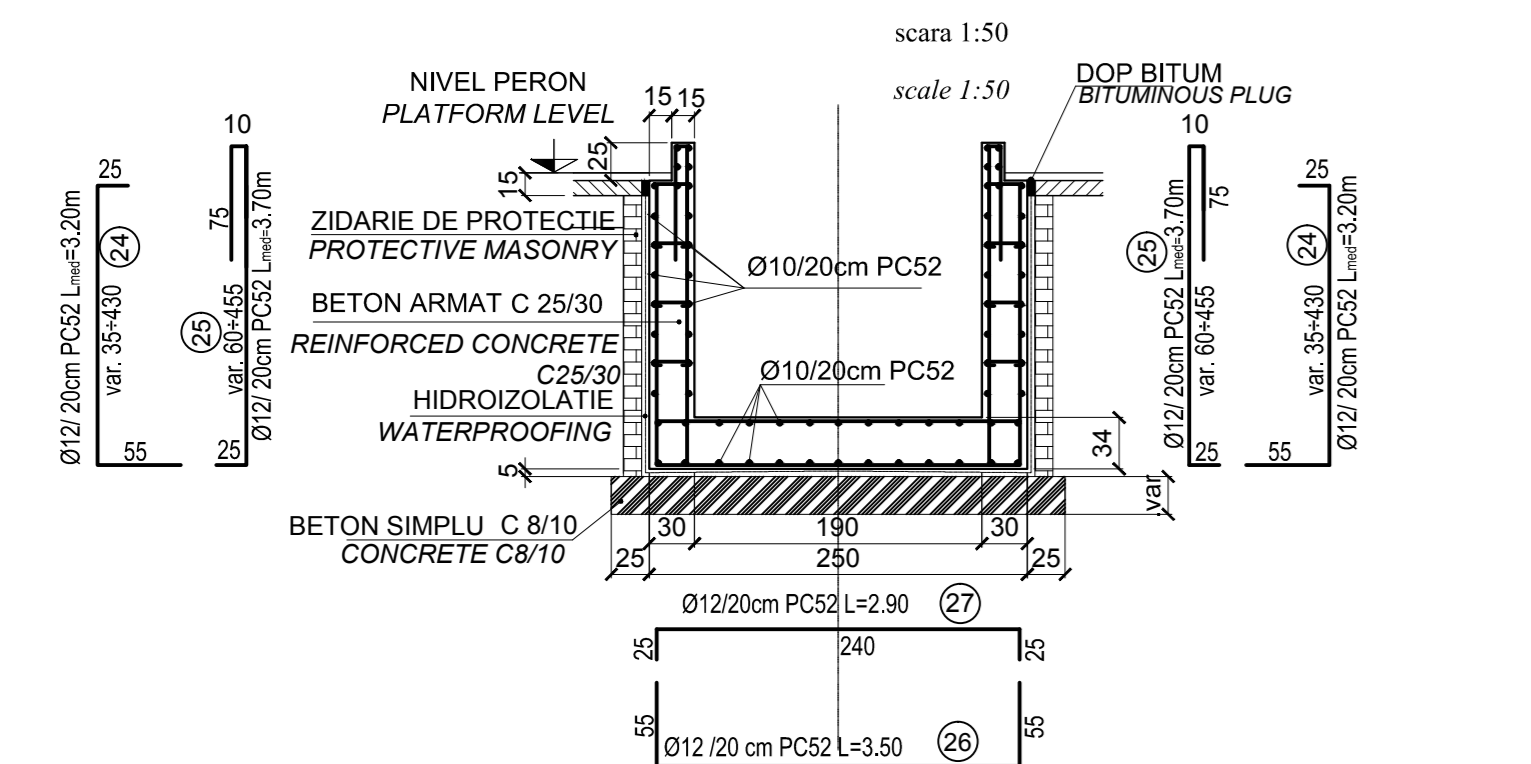


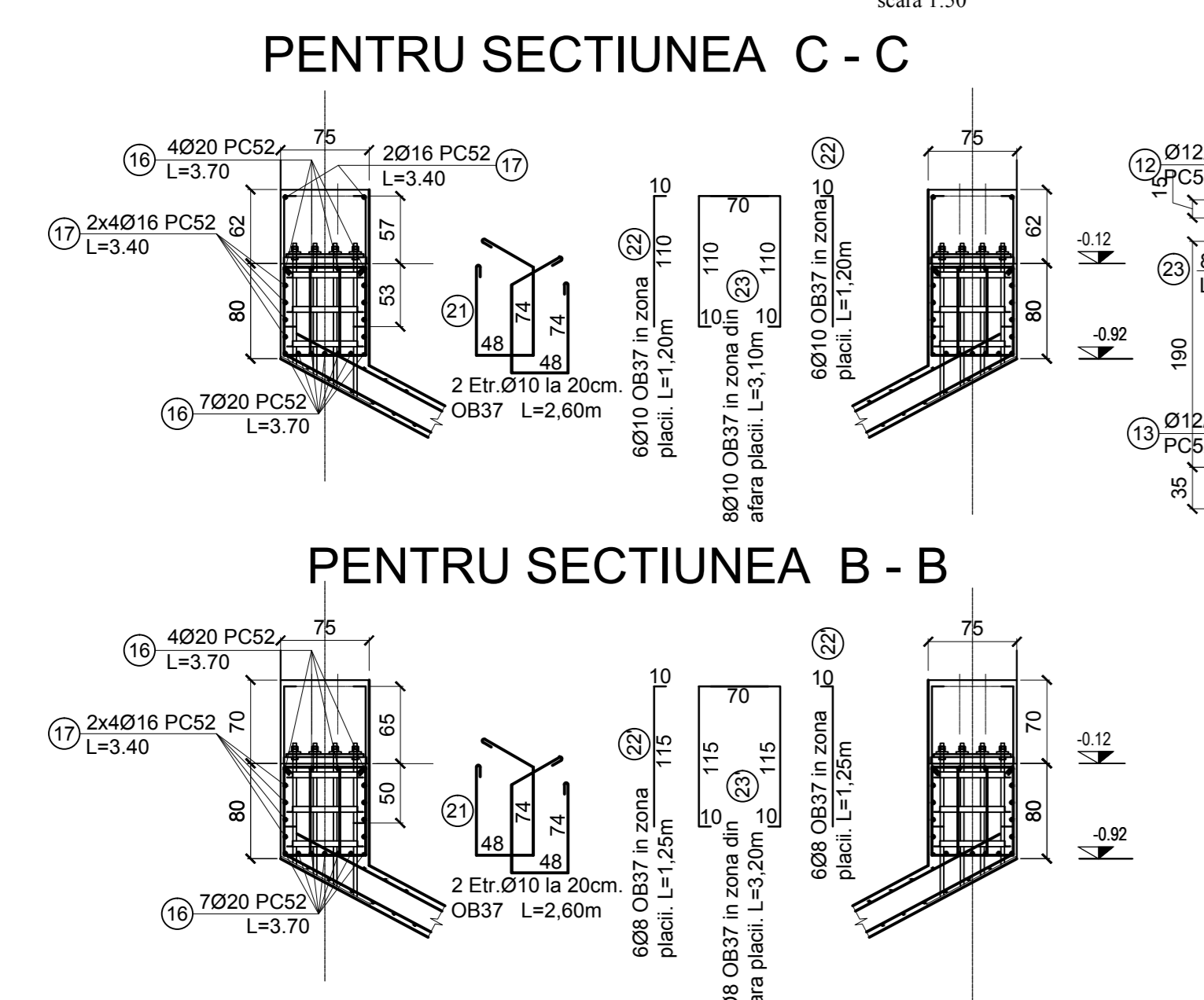
SECTIUNE : F-F
SECTION : F-F



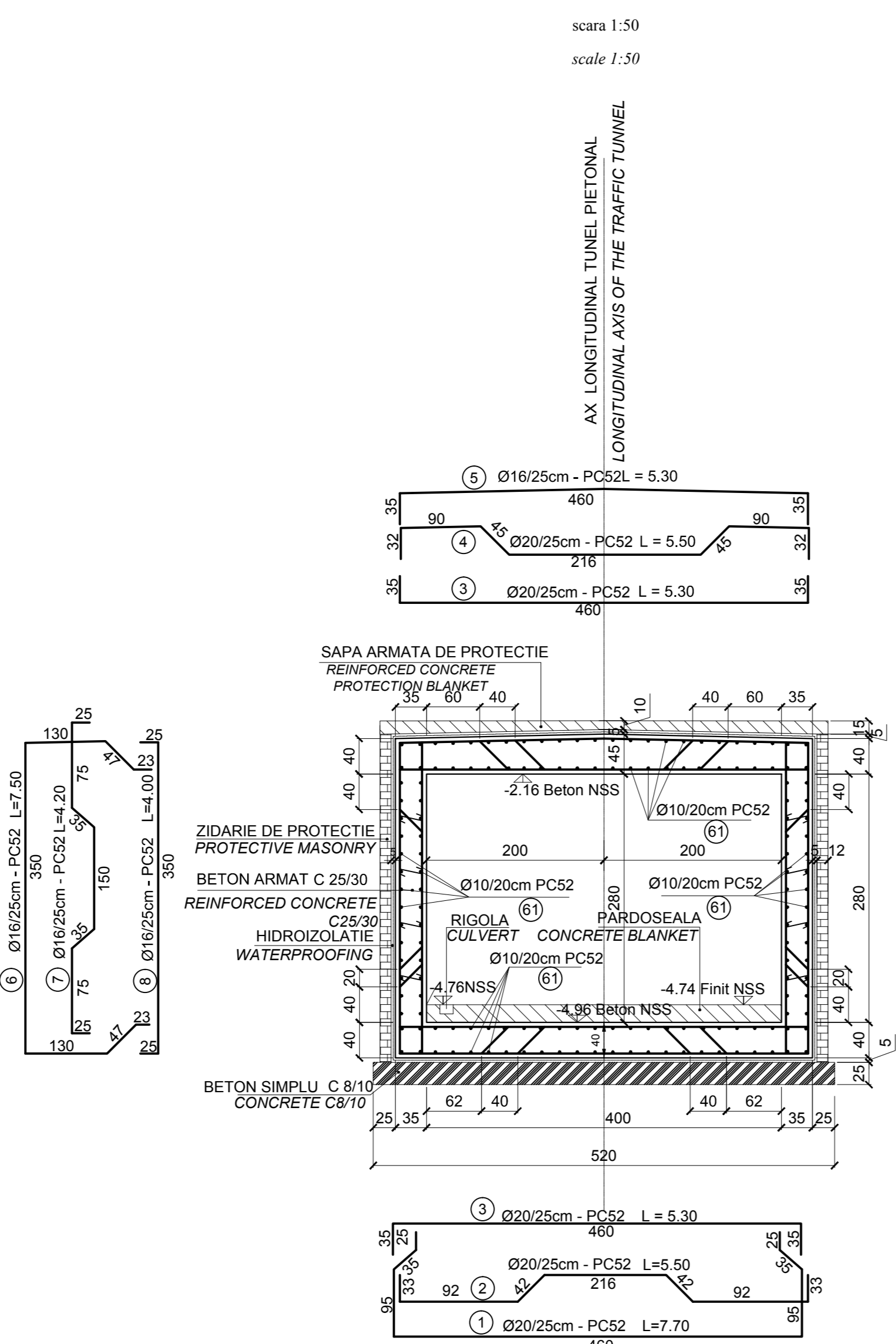
SECTIUNE : G-G
SECTION : G-G



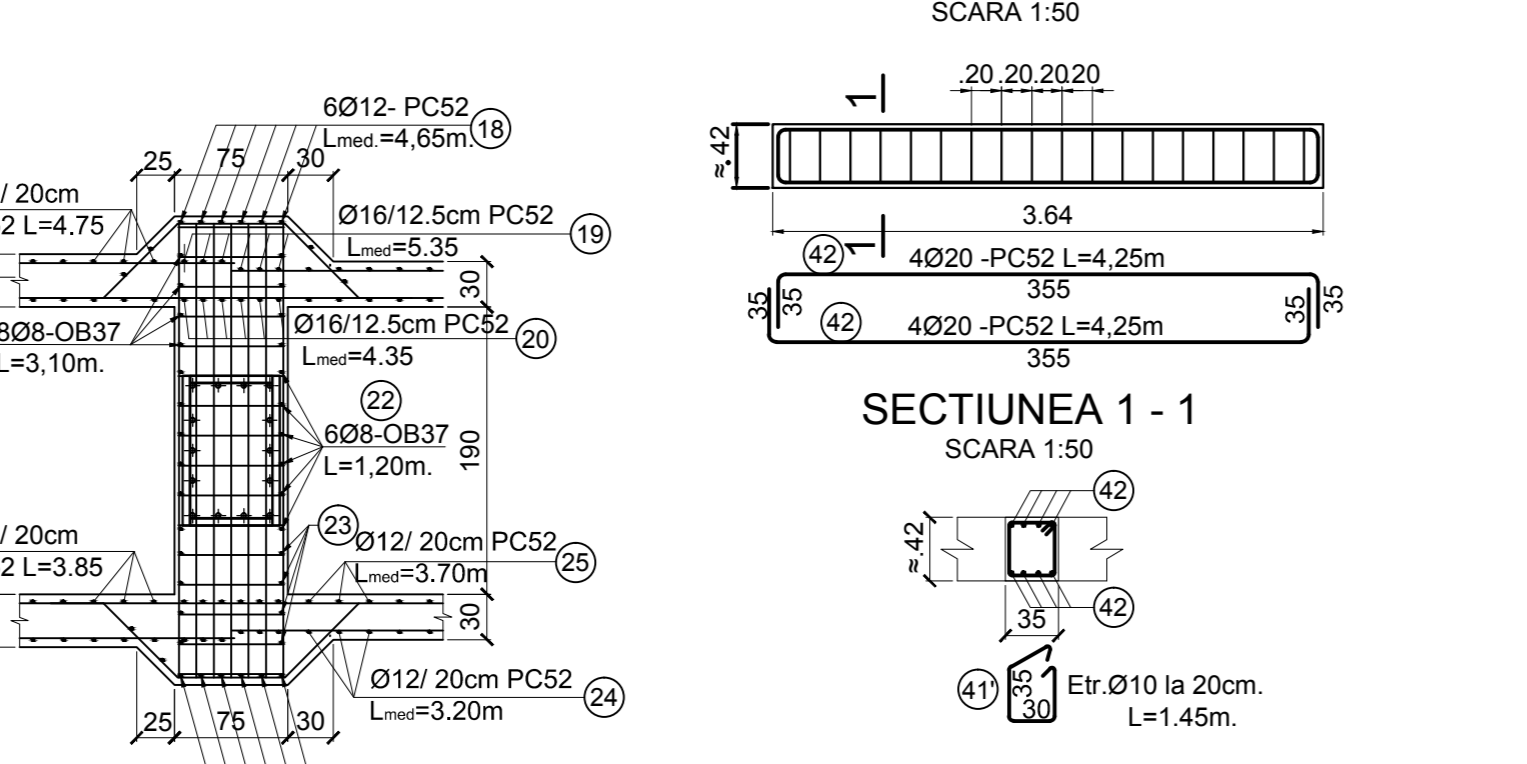
DETALII ARMARE GRINDA PE TUNEL
SCALA 1:50



SECTIUNE : E-E
SECTION : E-E



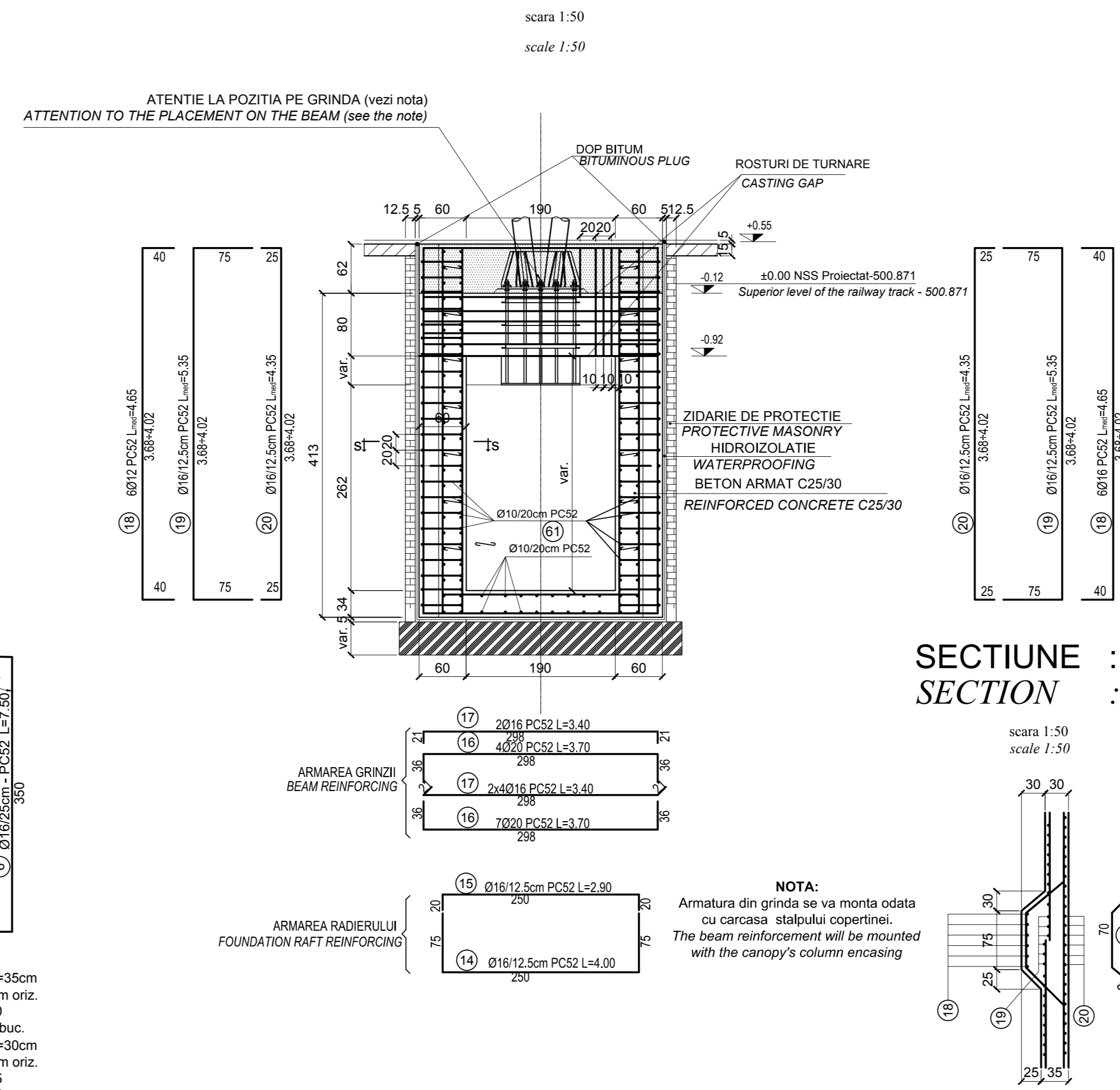
ARMARE GRINDA G1 - 35x42 -3buc. ARMARE GRINDA G2 - 35x42 -2buc.
SCARA 1:50



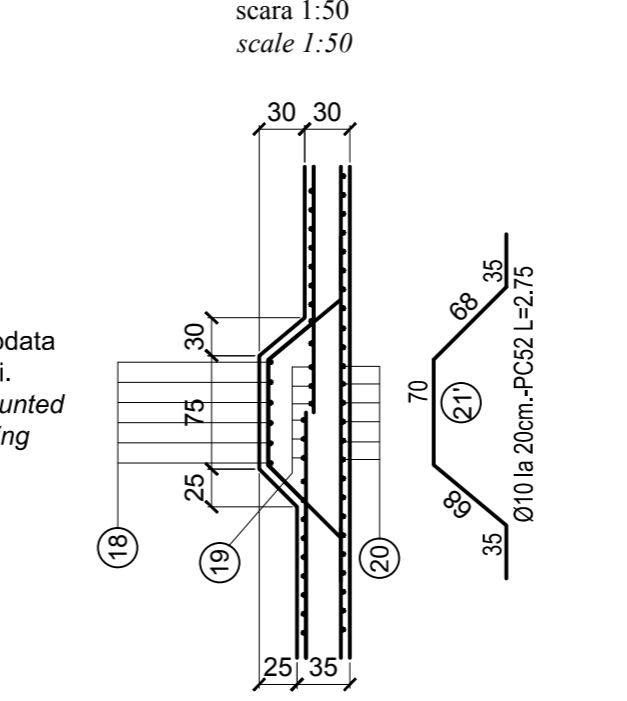
PENTRU EXTRASUL DE ARMATURA VEZI PLAN TUNEL
FOR THE REINFORCEMENT TABLE SEE THE TUNNEL PLAN

Beton simplu/ Plain concrete - C8/10 - P4 - T3 - II-A - 132.5 (R)
Beton armat/ Reinforcing concrete - C25/30 - P2 - T3 - II-A - 142.5 (R)
Armaturi/ Reinforcements - PC 52
Armaturi/ Reinforcements - OB 37

SECTIUNE : F'-F'
SECTION : F'-F'

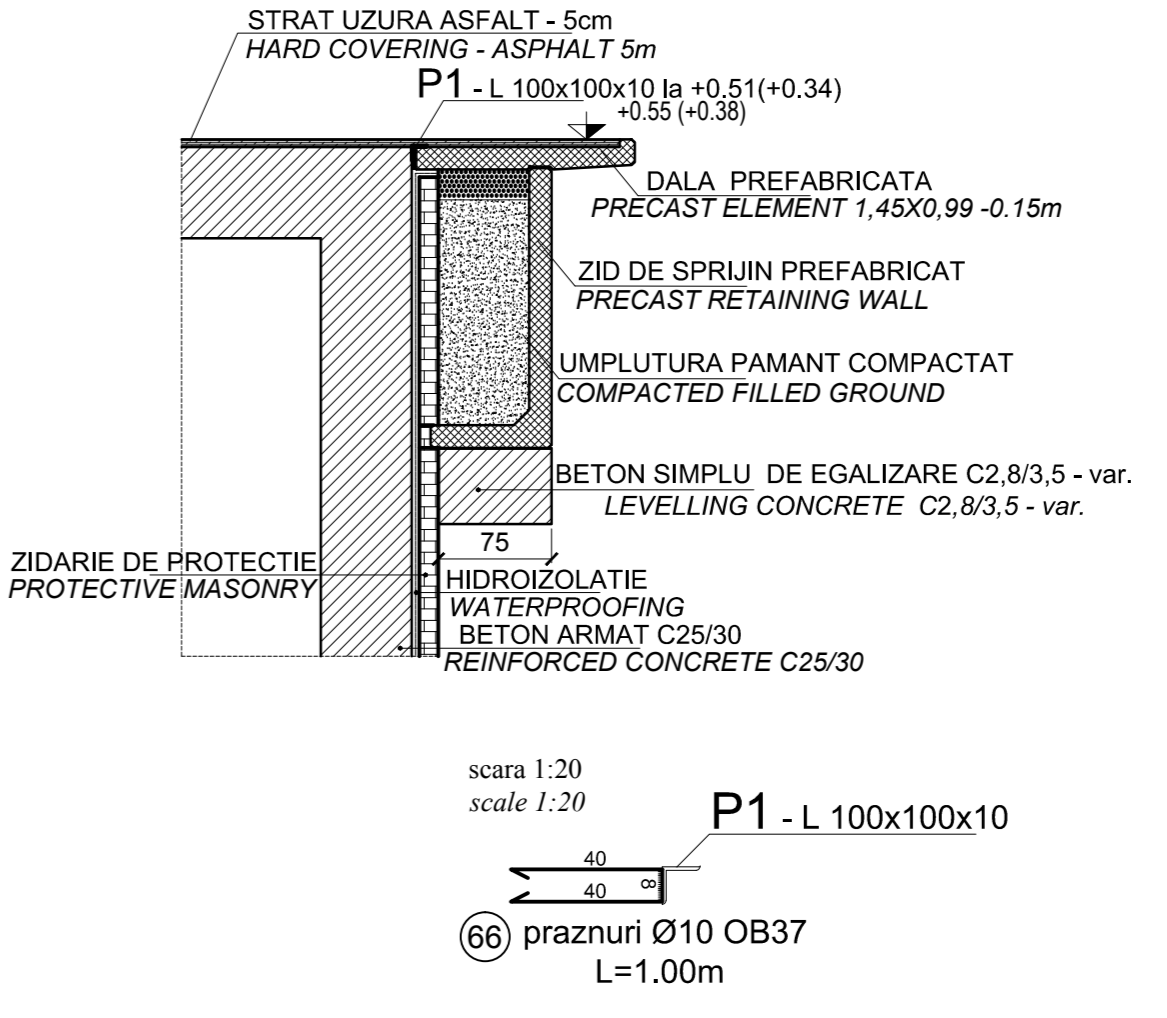


SECTIUNE : S-S
SECTION : S-S



NOTA:
Armatura din grinda se va monta odata cu carcasa stalpului copertinei.
The beam reinforcement will be mounted with the canopy's column encasing.

DETALII MONTARE DALA PREFABRICATA IN ZONA GRINDA FUNDATIE COPERTINA
MOUNTING DETAIL FOR PRECAST ELEMENT AT BEAM FOUNDATION OF THE CANOPY



D					
C					
B					
A					
Index	Date	Modificare	Proiectant	Aprobat	Aprobat CFR
Index	Date	Modification/Revision	Designer	Approved Consultant	Approved CFR

GUVERNUL ROMANIEI
ROMANIAN GOVERNMENT

PROIECT FINANAT DE UNIUNEA EUROPEANA
EUROPEAN UNION FINANCED PROJECT

CFR

C.N.C.F. "C.F.R." - S.A.

CLIENT / CLIENT

TALFER
GRUPO INGENIERIA DE OBRAS DE OBRA
Joint Venture leader

Scot
wilson

OBERMEYER
PLANEN + BERATEN GmbH

TECNIC
Consulting Engineers

Consultant / Consultant	Proj. project	R. Liuzza	12.2011	Semnatura	
Approved	Project manager			Signature	
Approved	Coordinator Section 1	C. Gambelli	12.2011		
Approved	Section 1 Coordinator				
Verified	Verifier	Giuseppe Fioravanti	12.2011		
Checked	Verifier				

Subcontractant / Subcontractor	Responsabil Subcontractant	A. Stancu - Dinulescu	12.2011		
Approved	Subcontractant Responsible				
Incomet	Projectant	Catalin Alexandrescu	12.2011		
Laborator	Designer				

Reabilitarea liniei de cale ferata Brasov - Simeria, parte componenta a coridorului IV Pan European, pentru circulatia trenurilor cu viteza maxima de 160 km/h, Tronsoanel: Brasov - Sighisoara
Rehabilitation of the railway line Brasov - Simeria, Component Part of the IV Pan-European Corridor, for the train circulation with maximum speed of 160 km/h, Section : Brasov - Sighisoara

Proiect/Project
2004/RO16/PA/003
Faza / Phase:
P.Th. / T.D.

Denumire desen / Drawing Title :
STATIA BOD - TUNEL PIETONAL SECTIUNI TRANSVERSALE E-E; F-F; F'-F'; G-G; DETALII ARMARE GRINZI PE TUNEL
BOD STATION - PEDESTRIAN TUNNEL CROSS SECTIONS F-F; E-E; F'-F'; G-G; TUNNEL BEAMS REINFORCEMENT DETAILS

Codificare / Codification System	Scara / Scale	LOT/LOT	No. / No.
E A 5 1 0 1 E 0 5 W B C C 0 0 2 4	1:50		01 / 01