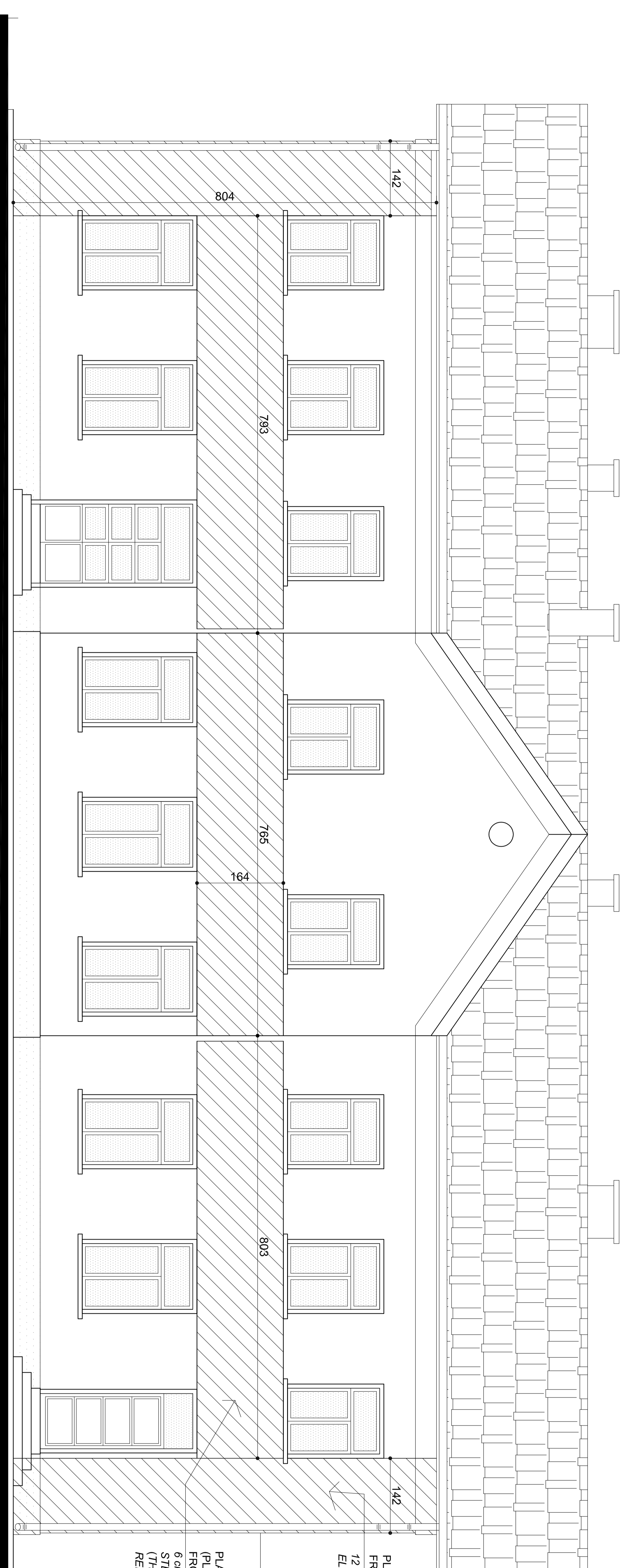
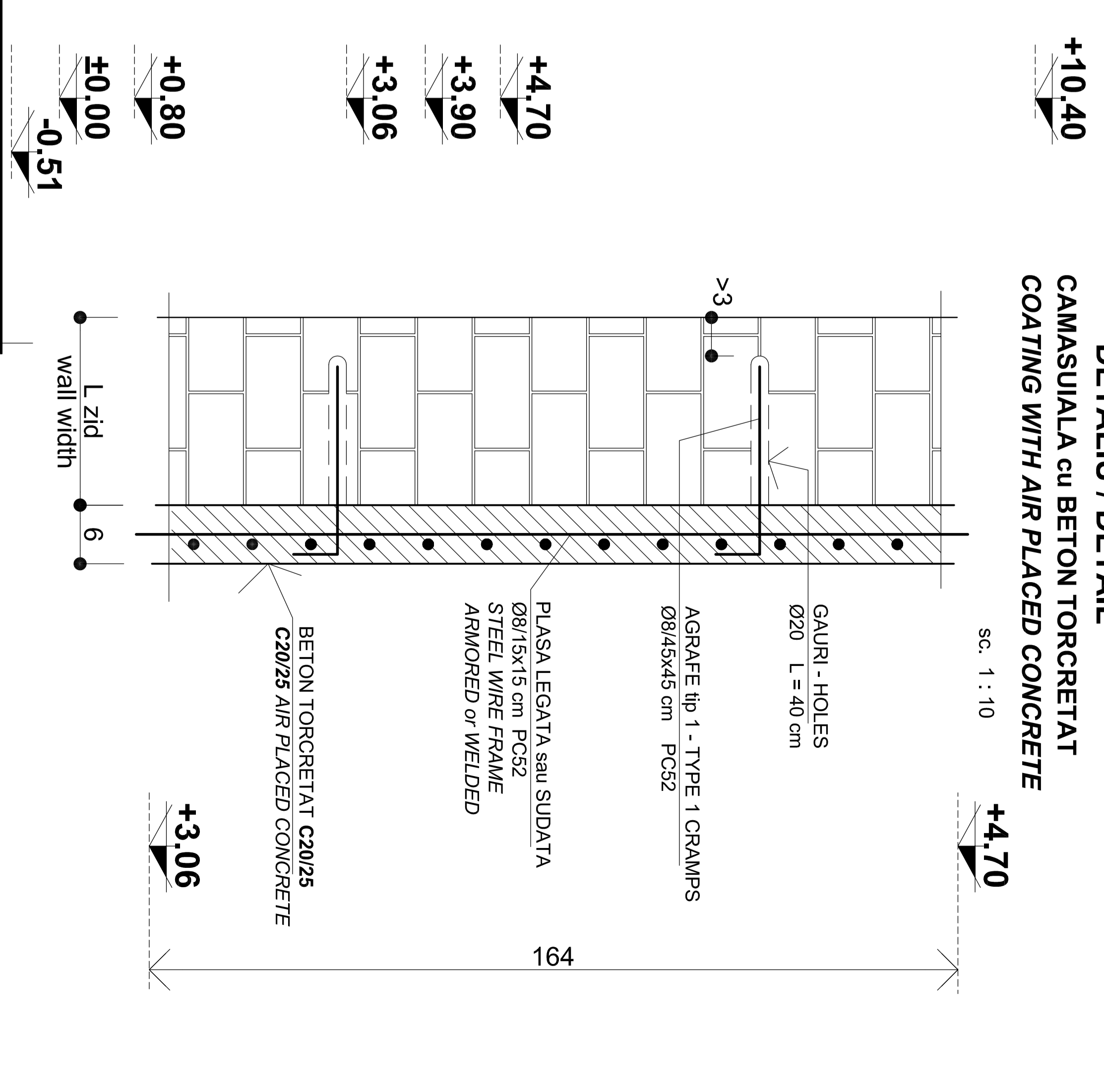


FATADA SPRE LINII - CONSOLIDARE
RAILWAY VIEW CONSOLIDATION sc. 1 : 50



FATADA SPRE PIATA - CONSOLIDARE
MARKET SQUARE VIEW CONSOLIDATION sc. 1 : 50



DETALIU / DETAIL
CAMASUALA cu BETON TORCRETAT
COATING WITH AIR PLACED CONCRETE sc. 1 : 10

BETON ARMAT / REINFORCED CONCRETE : C16/20
OTEL BETON / REINFORCEMENT : PC52

+10.40
+7.60
+4.70
+3.90
+0.80
±0.00
-0.51

PLACARE BETON TORCRET 12 cm PE TOATA INALTIMEA FRONTONULUI (P+1) cu PLASA DUBLA Ø8-10x10 cm 12 cm REINFORCED CONCRETE PLATING AT THE FULL ELEVATION (P+1) WITH DOUBLE WIRE FRAME

PLACARE BETON TORCRET 6 cm cu PLASA Ø8-10x10 cm (PLASA SE VA ANCOARA IN CAMASUALA de 6 cm B.A. A FRONTONANELOR) 6 cm AIR PLACED CONCRETE PLATING WITH STEEL WIRE FRAME (THE WIRE FRAME WILL BE ANCHORED INTO THE 6 cm REINFORCED CONCRETE COATING OF THE GABLES)

D	C	B	A	Index	Date	Modificari/Revisii	Proiectant	Director	Approved C.F.R.	Approved C.F.R.

CLIENT / CLIENT		C.N.C.F. "C.F.R." - S.A.	
CONSULTANT / CONSULTANT		TECNIC	
Approbat	Proiectant	R. Lutz	12.2011
Approbat	Coordonator proiect	C. Gambelli	12.2011
Approbat	Director	Giuseppe Forastieri	12.2011
SUBCONTRACTANT / SUBCONTRACTOR		AMM	
Approbat	Responsabil Subcontractant	A. Simeanu - Dumitrescu	12.2011
Elaborat	Designer	Ancu Rus	12.2011

Reabilitarea liniei de cale ferata Brasov - Sibiu, parte componenta a contractului IV Pan European, pentru circulatia trenurilor cu viteza maxima de 160 km/h. **Trososul : Brasov - Sibiu**
Rehabilitation of the railway line Brasov - Sibiu, component part of the IV Pan-European Contract, for the train circulation with maximum speed of 160 km/h. **Section : Brasov - Sibiu**

Denumire desen / Drawing Title :
STATIUA C.F. FELDIOARA - CLADIRE DE CALATORI - DETALIU CONSOLIDARE FATADA
RAILWAY STATION FELDIOARA - TRAVELERS BUILDING - VIEWS CONSOLIDATION
DETAILS