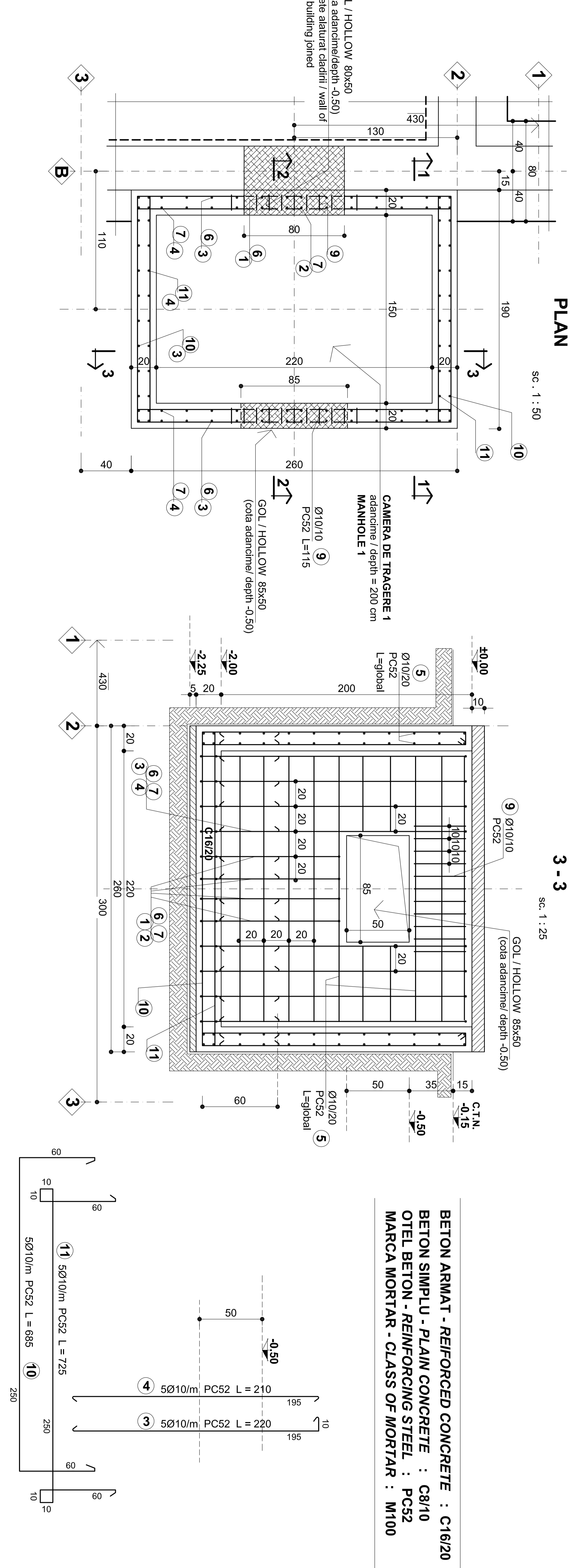
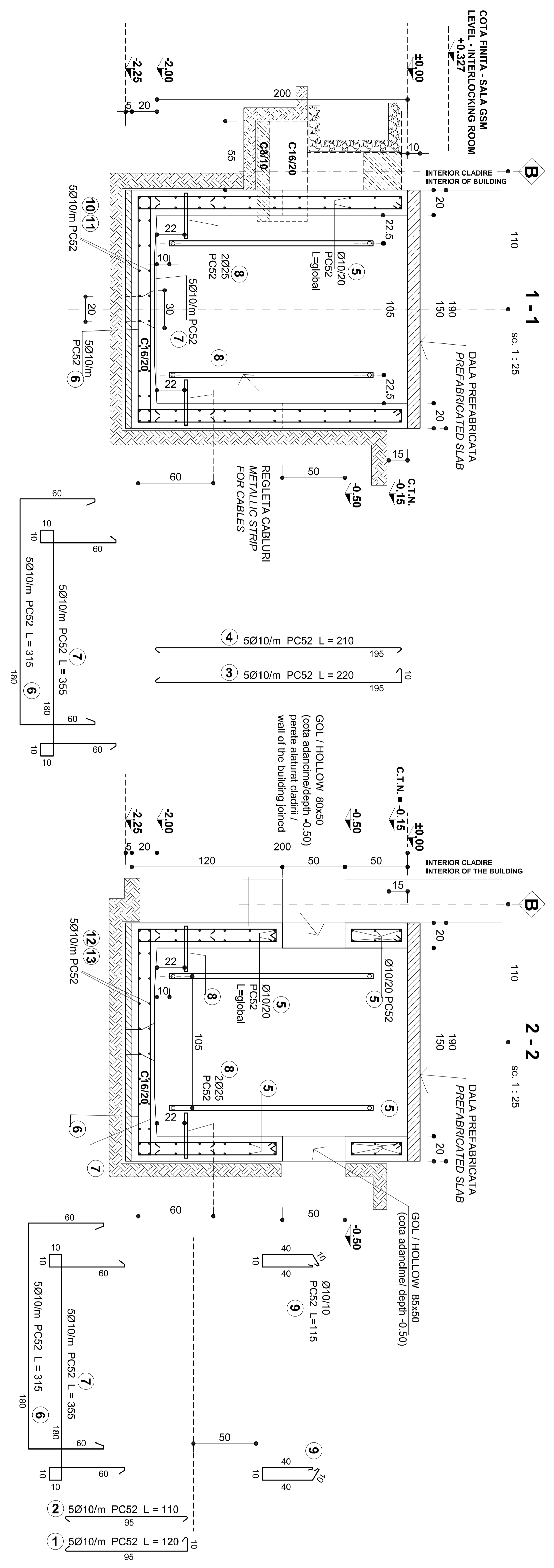


TABLEAU ARMARE - REINFORCEMENT TABLE

ELEM.	MARCA	Ø	NR. BUC.	LUNG. -m-	LUNGIMID/Ø	
					PC52	Ø 25
1	10	8	120	9.6		
2	10	8	110	8.8		
3	10	48	2.20	105.6		
4	10	48	1.95	93.6		
5	10	1	220.00	220.0		
6	10	16	3.15	50.4		
7	10	16	3.55	56.8		
8	25	4	1.00	56.8	4.0	
9	10	22	1.15	25.3		
10	10	12	6.85	82.2		
11	10	10	7.25	87.0		
LUNGIME / DIAMETRE					739.3	4.0
LUNGIME / m / DIAMETRE					0.617	3.853
GREUTATE / DIAMETRE					456.1	15.4
TOTAL KG. :					4720	



BETON ARMAT - REINFORCED CONCRETE : C16/20
 BETON SIMPLU - PLAIN CONCRETE : C8/10
 OTEL BETON - REINFORCING STEEL : PC52
 MARCA MORTAR - CLASS OF MORTAR : M100

		C.N.C.F. "C.F.R." - S.A.	
CLIENT / CLIENT			
CONSULTANT / CONSULTANT		TECNIC Consulting Engineers	
Approved Project manager R. Luzzi	Date 12.2011	Approved Project manager R. Luzzi	Date 12.2011
Approved Coordinator Section 1 C. Gambelli	Date 12.2011	Approved Section 1 Coordinator C. Gambelli	Date 12.2011
Verified Expert Verifier Giuseppe Fioravanti	Date 12.2011	Checked Checking Expert Giuseppe Fioravanti	Date 12.2011
SUBCONTRACTANT / SUBCONTRACTOR			
Approved Subcontractor Responsible A. Stancu - Dinulescu	Date 12.2011	Approved Subcontractor Responsible A. Stancu - Dinulescu	Date 12.2011
Elaborated Designer Anca Rus	Date 12.2011	Elaborated Designer Anca Rus	Date 12.2011
Reabilitarea liniei de cale ferata Brasov - Sibieria, parte componenta a coridorului IV Pan European, pentru circulatia trenurilor cu viteza maxima de 160 km/h, Tronsoani : Brasov - Sighisoara Rehabilitation of the railway line Brasov - Sibieria, component Part of the IV Pan-European Corridor, for the trains circulation with maximum speed of 160 km/h, Section : Brasov - Sighisoara			
Denumire desen / Drawing Title : Stati cf FELDIOARA / FELDIOARA Railway station PLAN SI DETALII CAMERA DE TRAGERE TIP 1 - Cladire container C.E. tip PLAN and DETAILS MANHOLE TYPE 1 - Typical I.S. shelter building			
Codificare / Codification System E A S I 0 1 1 E 0 7 B Z C C 0 0 0 X 0 0 3 0		Spatiu / Scale 1:25 1:50	
Nr. / No 01 / 01		LOT / LOT	