

TABLEAU ARMARE - REINFORCEMENT TABLE

ELEM.	MARCA	Ø	NR. BUC.	LUNG. BARA -m.-	LUNGIMI/DIAM.	
					Ø 10	Ø 25
1	10	3	2.65	8.0		
2	10	3	3.05	9.2		
3	10	39	1.25	48.8		
4	10	39	1.15	44.9		
5	10	1	100.00	100.0		
6	10	18	0.70	12.6		
7	10	18	0.60	10.8		
8	25	4	1.00		4.0	
9	10	7	1.15	8.1		
LUNGIME / DIAMETRE					242.2	4.0
LUNGIME / m. / DIAMETRE					0.617	3.853
GREUTATE / DIAMETRE					149.4	15.4
TOTAL kg. :					165.0	

CAMERA CABLURI 3 tip X
X-type MANHOLE 3

ELEM.	MARCA	Ø	NR. BUC.	LUNG. BARA -m.-	LUNGIMI/DIAM.	
					Ø 10	Ø 25
1	10	3	2.65	8.0		
2	10	3	3.05	9.2		
3	10	39	1.25	48.8		
4	10	39	1.15	44.9		
5	10	1	100.00	100.0		
6	10	18	0.70	12.6		
7	10	18	0.60	10.8		
8	25	4	1.00		4.0	
9	10	7	1.15	8.1		
LUNGIME / DIAMETRE					242.2	4.0
LUNGIME / m. / DIAMETRE					0.617	3.853
GREUTATE / DIAMETRE					149.4	15.4
TOTAL kg. :					165.0	

Index	Date	Modificare	Proiectant	Proiectant	Proiectant	Proiectant
Index	Date	Modificare	Modificator/Revision	Modificator/Revision	Modificator/Revision	Modificator/Revision
A						
B						

ROMANIAN GOVERNMENT PROJECT FINANȚAT DE UNIUNEA EUROPEANĂ
EUROPEAN UNION FINANCED PROJECT

GUVERNUL ROMÂNIEI
ROMANIAN GOVERNMENT

CFR

C.N.C.F. "C.F.R." - S.A.

ITALFERR
Scot Wilson
OBERMEYER
PLANEN + BERATEN GmbH
TECNIC
Consulting Engineers

APROBAT / APPROVED
R. Lutzza
12.2011

VERIFICAT / CHECKED
Giuseppe Fioravanti
12.2011

CONSULTANT / CONSULTANT

APROBAT / APPROVED
R. Lutzza
12.2011

VERIFICAT / CHECKED
Giuseppe Fioravanti
12.2011

SUBCONTRACTANT / SUBCONTRACTOR

APROBAT / APPROVED
A. Stancu - Dinulescu
12.2011

VERIFICAT / CHECKED
Anca Rus
12.2011

Reabilitarea liniei de cale ferata Brasov - Simeria, parte componentă a coridorului IV Pan European, pentru circulația trenurilor cu viteză maximă de 160 km/h.

Tronsoani : Brasov - Sighișoara

Corridor, for the trains circulation with maximum speed of 160 km/h.

Section : Brasov - Sighișoara

Proiect/Project
2004/RO/16/P/PA/003

Faza / Phase:
D.E. / E.D.

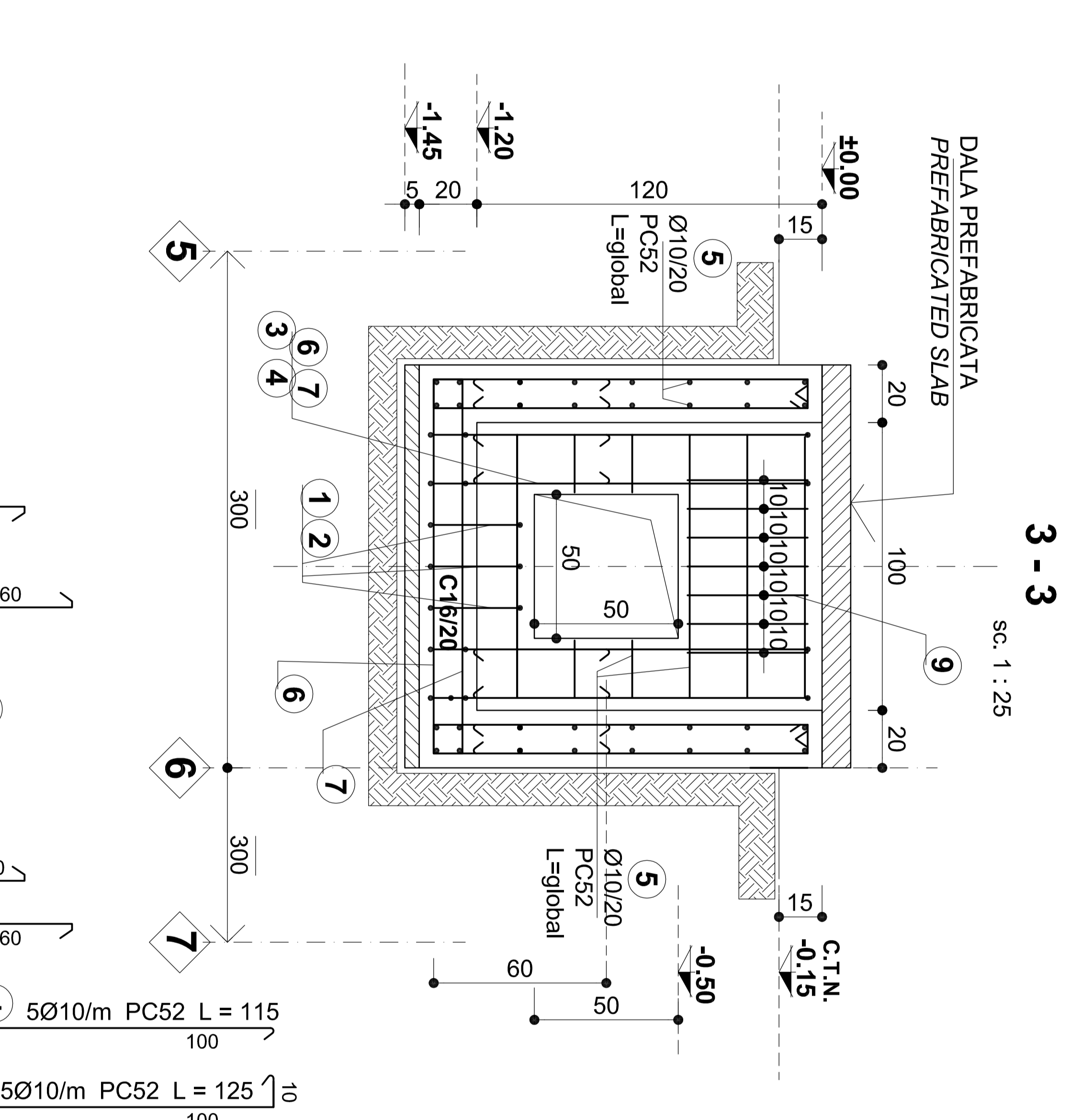
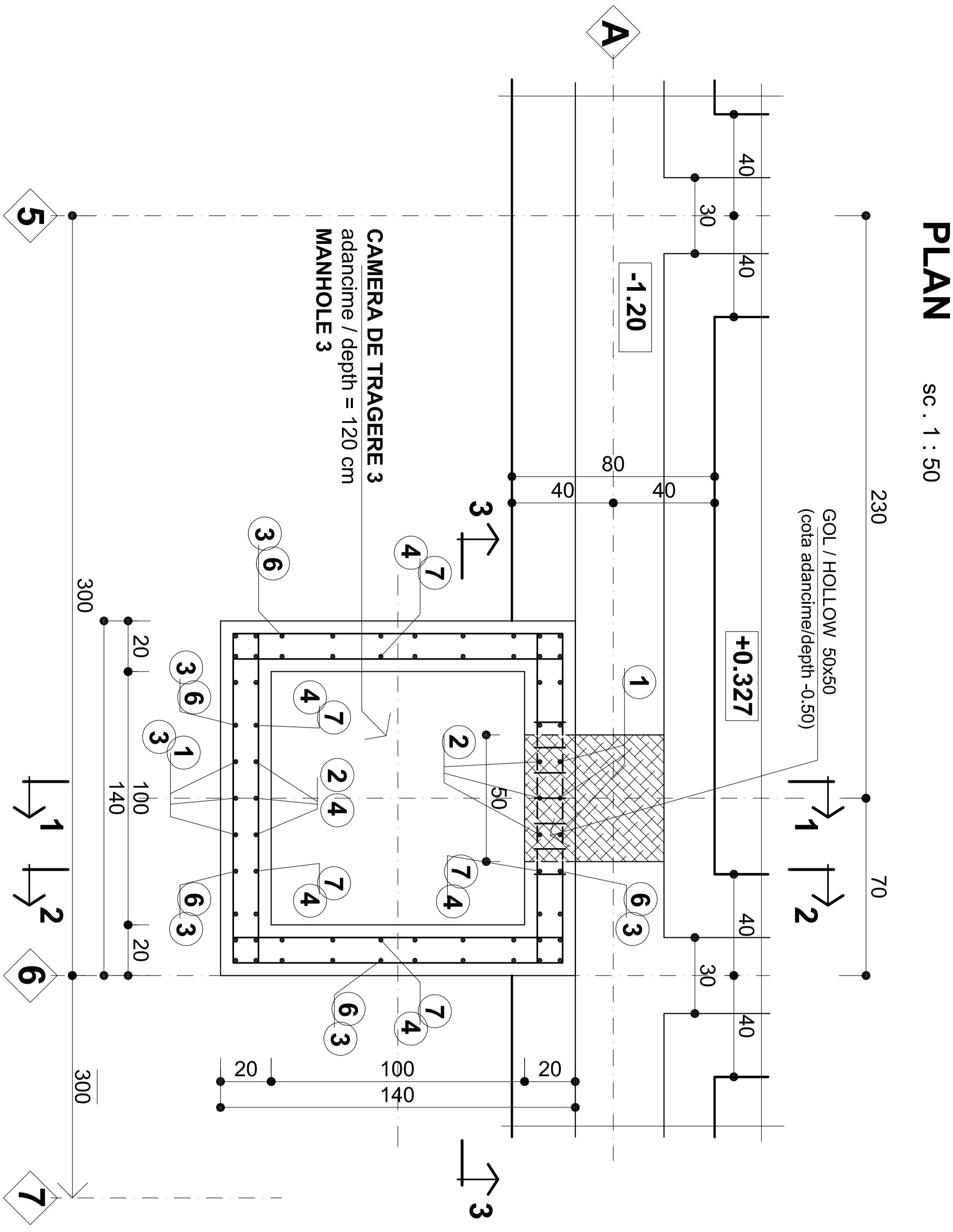
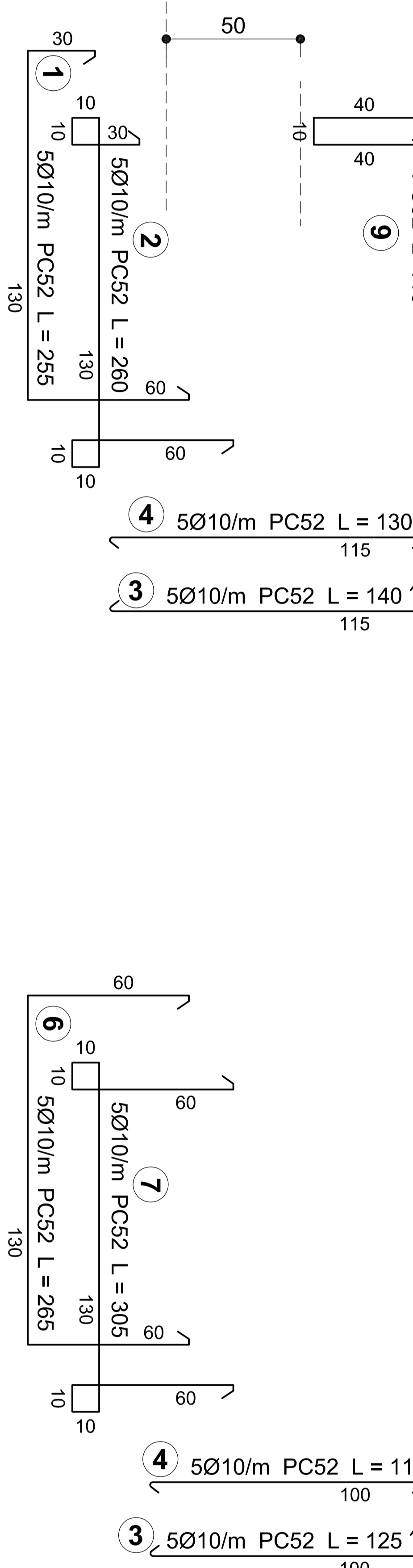
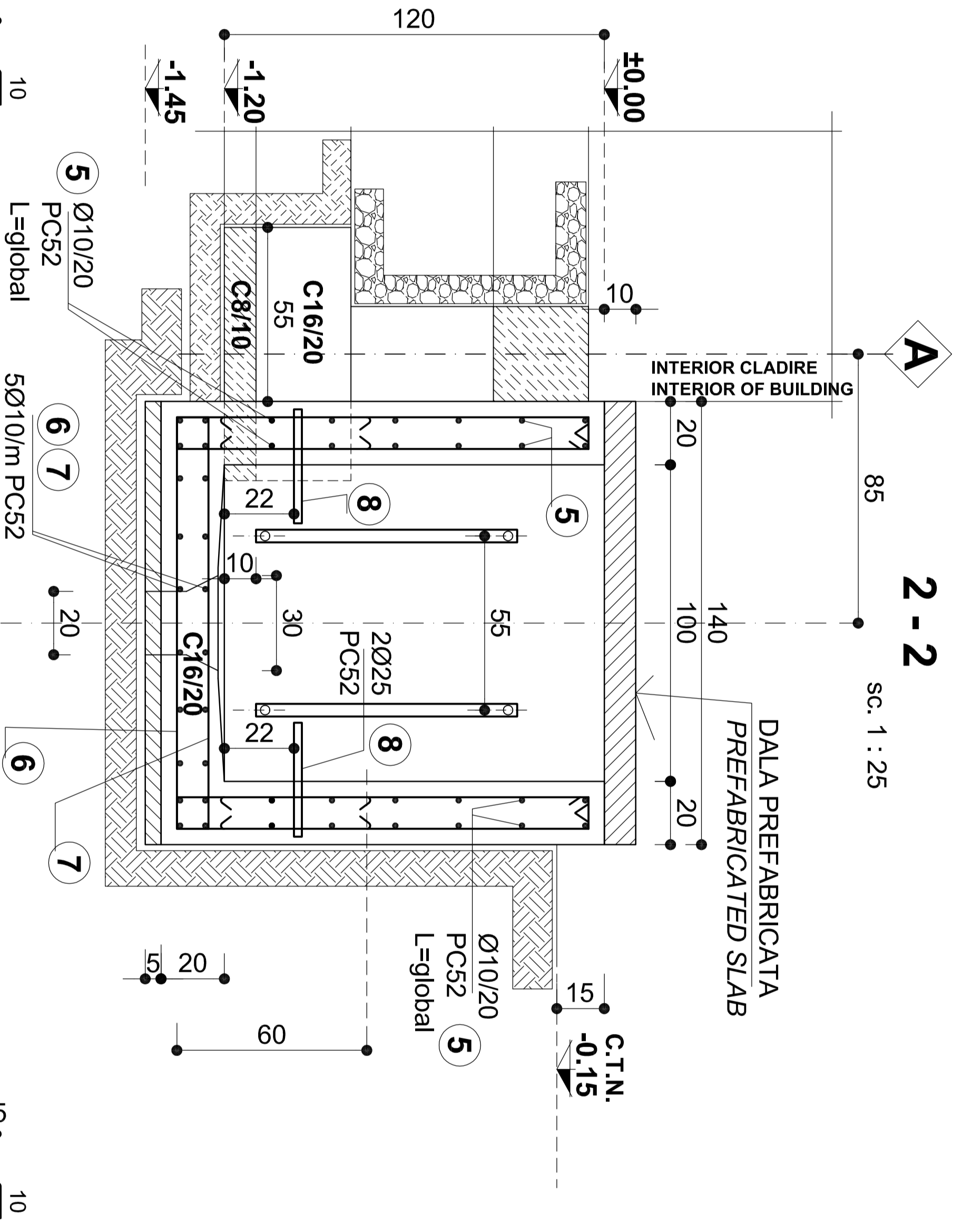
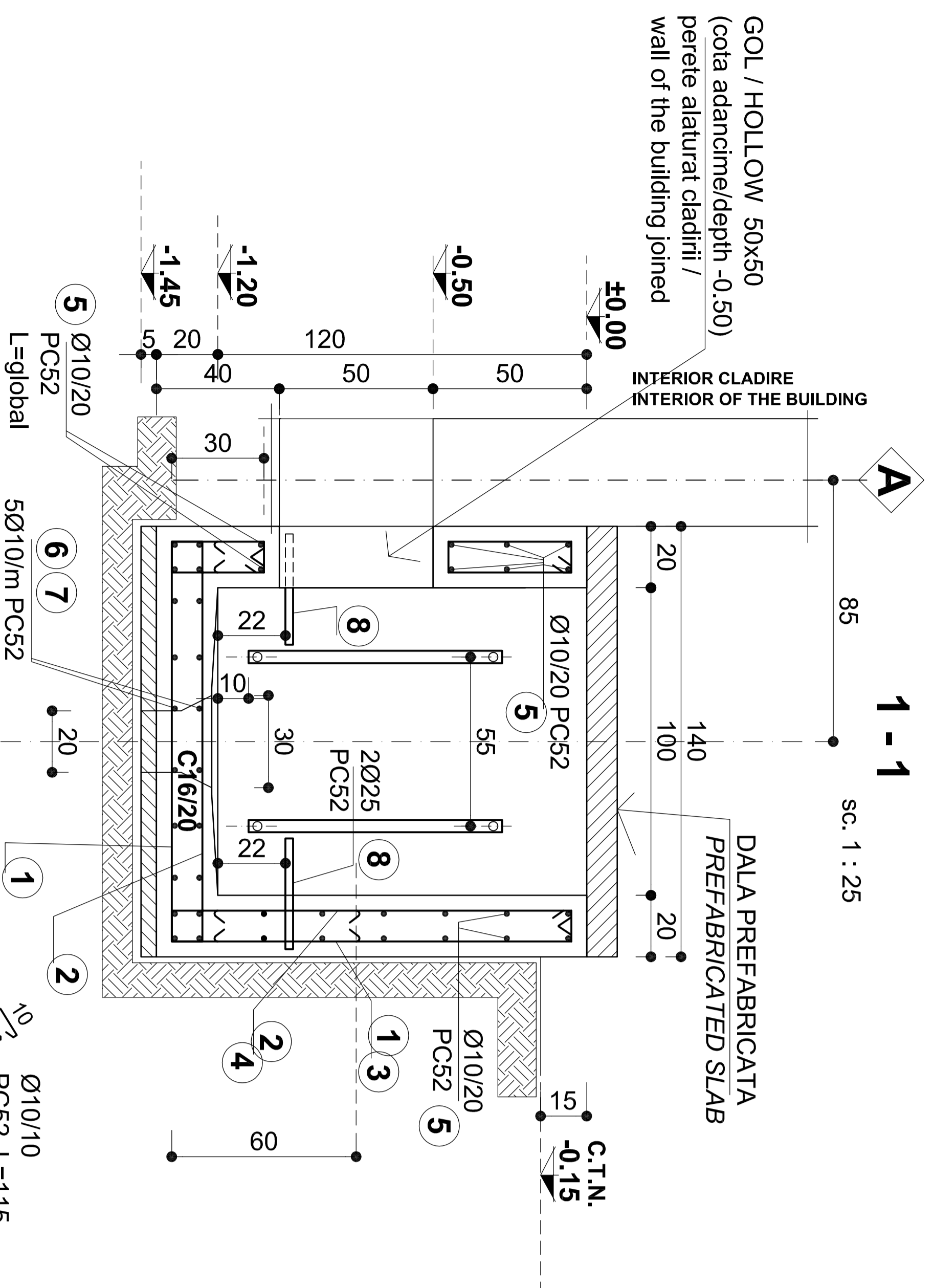
Denumire desen / Drawing Title :
Statiă cf FELDIOARA/ FELDIOARA Railway station
PLAN si DETALII CAMERA de TRAGERE TIP 3 - Cladire container C.E. tip
PLAN and DETAILS MANHOLE TYPE 3 - Typical I.S. shelter building

Codificare / Codification System
E A 5 1 0 1 E 0 7 B Z C C 0 1 0 0 X 0 1 5 0

Scara / Scale
1:25 1:50

LOT / LOT

Nr. / No
01 / 01



BETON ARMAT - REINFORCED CONCRETE : C16/20
BETON SIMPLU - PLAIN CONCRETE : C8/10
OTEL BETON - REINFORCING STEEL : PC52
MARCA MORTAR - CLASS OF MORTAR : M100