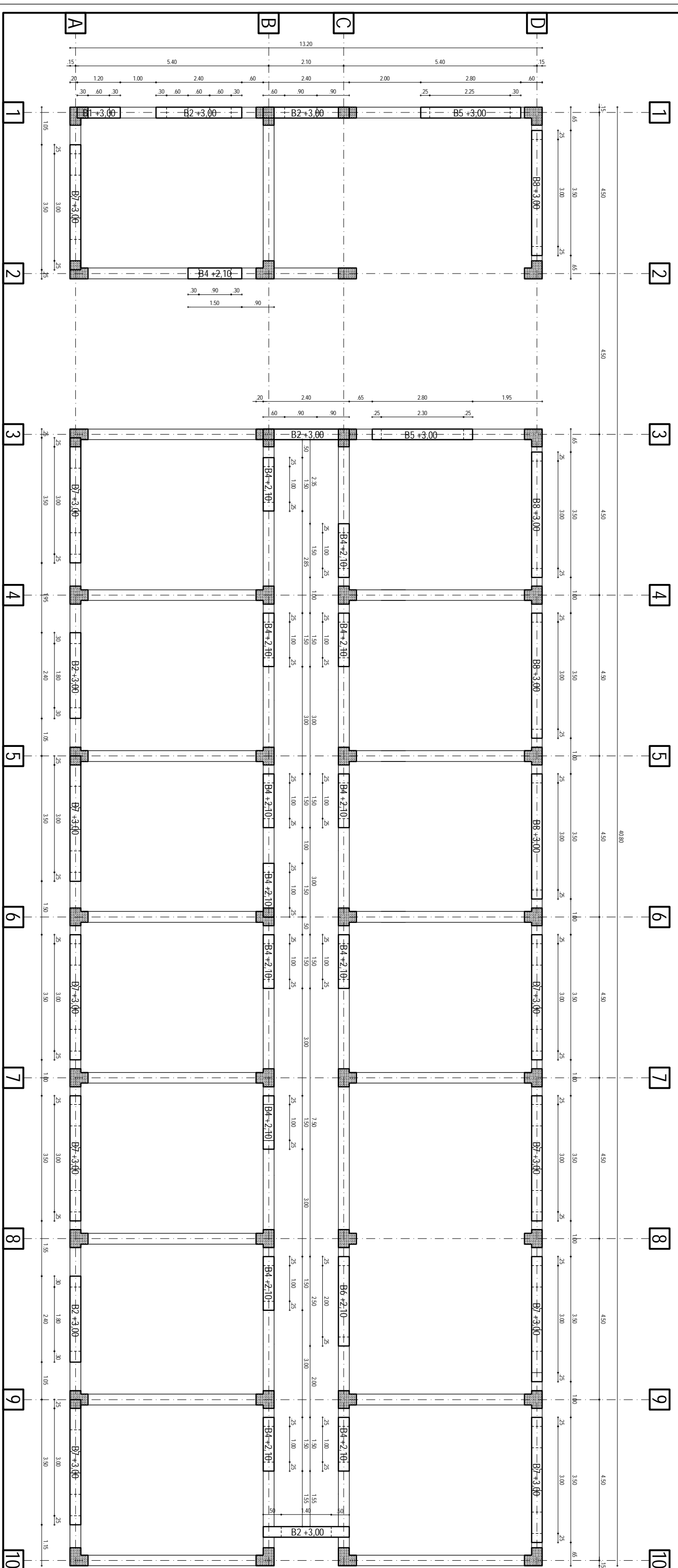
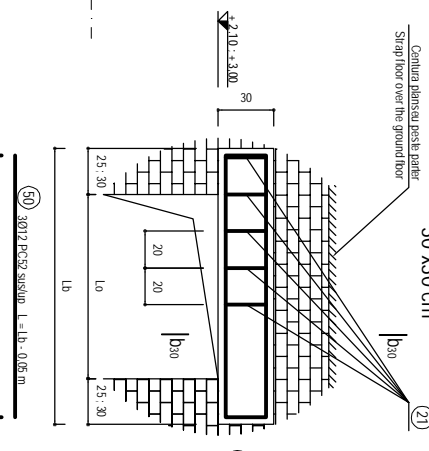


PLAN BUANDRUGI PARTER sc: 1:50
PLAN FOR GROUND FLOOR LINTELS sc: 1:50



BUANDRUGI / LINTEL - sc: 1:20
30 x 30 cm



TABEL BUANDRUGI / TABLE OF LINTELS

Tip	LT	Rea	Q	LT	LT	Rea	Q	LT	LT	Rea	Q	TOTAL REA
NAME	INT	Pos.	Q	LT	LT	Rea	Q	LT	LT	Rea	Q	Q
B1	1.20	1	3012	1.55	1.15	Rea	7	3.18	3.18	7.20		
B2	2.40	6	3016	2.15	2.35	Rea	13	5.91	56.46	115.68		
B3	1.50	14	3012	1.85	1.45	Rea	8	3.64	50.96	123.06		
B4	1.50	2	3020	3.15	2.15	Rea	15	6.82	13.64	74.06		
B5	2.80	1	3012	2.65	2.45	Rea	13	5.91	5.91	14.12		
B6	2.50	1	3012	3.65	3.45	Rea	18	8.18	81.80	194.50		
B7	3.50	10	3012	3.65	3.45	Rea	18	8.18	81.80	194.50		
B8	3.50	4	3016	3.65	3.45	Rea	18	8.18	32.71	109.68		
TOTAL		38							2237	638.2		

NOTA:
Pentru toate armaturile, raza de curbură de îndoire va fi eguală cu 3d
NOTE:
For all reinforcements, the radius of mandrel for bending is equal to 3d

Coțarea armării în "ort":
Coțarea conductorilor metalici în "ort"
Reinforcement dimensions in "ort"
Dimensions of metallic elements in "ort"

BETON ARMAT, tipul:
C18/20 - P4 - 13 - IIA S2, S1 0...16
OTEL BETON : OB37, PCS2
LAMINATE : S235, S235 Q137
REINFORCED CONCRETE, brand:
C18/20 - P4 - 13 - IIA S2, S1 0...16
ROLLED STEEL : S235, S235 Q137
Acceptarea cu beton a armaturilor de rezistență:
c = 2,5 cm, la buandrug
Concrete covering of the main reinforcing bars:
c = 2,5 cm for lintels

30.00 = 40.60 NSS

CLIENT / CLIENT: C.A.C.F. - C.F.R. - S.A.

CONSULTANT / CONSULTANT: OBERMEYER CONSULTING ENGINEERS

PROIECTANT / SUBCONTRACTOR: A. Ștefănuț, Ștefănuț

APATIA RAILWAY STATION BUILDING - PLAN FOR GROUND FLOOR LINTELS

CLAJA RAILWAY STATION BUILDING - PLAN FOR GROUND FLOOR LINTELS