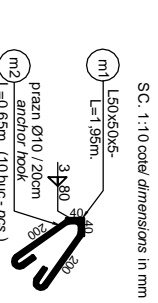
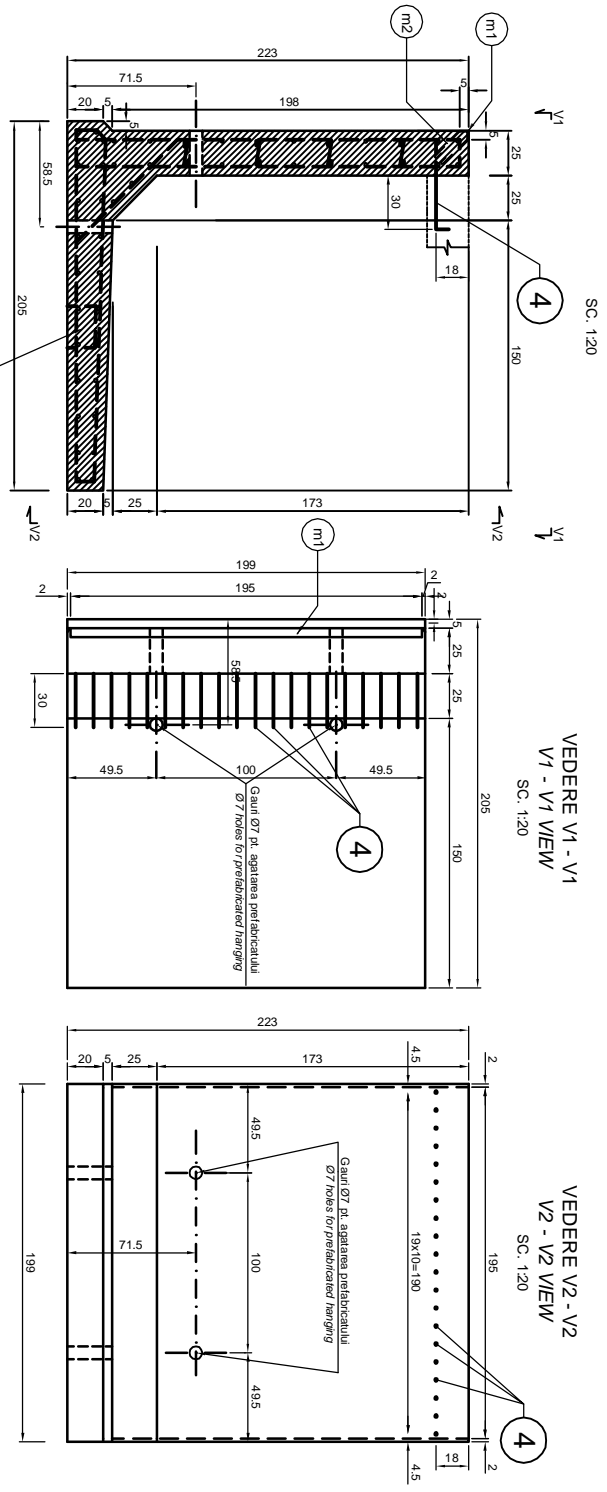


COFRAU ELEMENT PREFABRICAT ZR1
ENCASING PRECAST CONCRETE UNIT ZR1

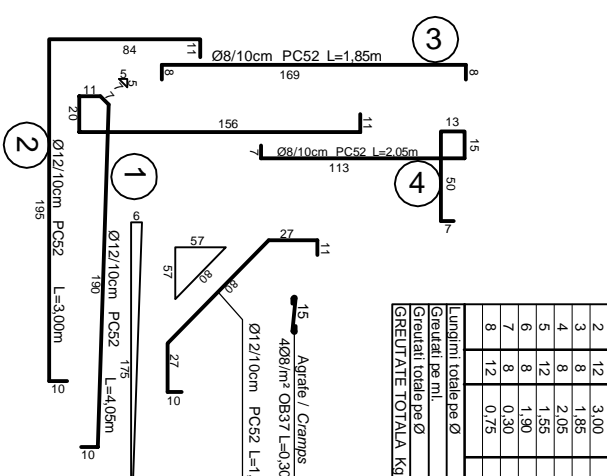
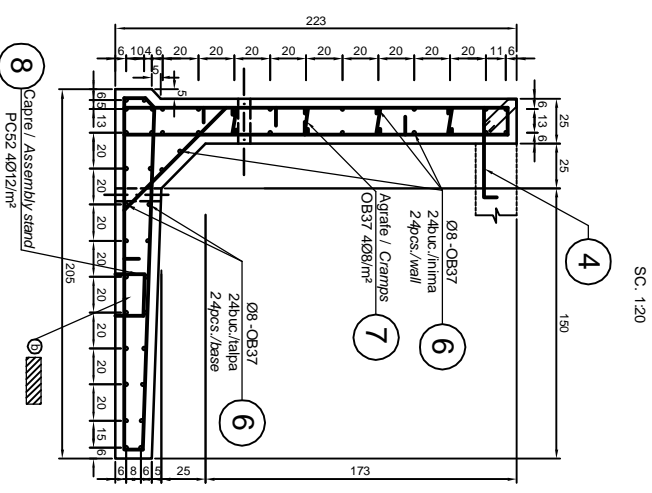


m1 - L50x50x5 - 1buc. x 1,95m. x 3,77kg/m. = 7,57kg.
m2 - Ø10 OB37 - 10buc. x 0,65m. = 6,50m. x 0,617kg/m. = 4,13kg.
OTEL / STEEL : S235J2G3 (QL37) TOTAL = 11,7kg.

ZR1 PREFABRICATED UNIT CHARACTERISTICS - 1psc.

PREFABRICAT	BUC.	VOLUMETRIE	MASA (cu COFRAU)	OTEL (cu COFRAU)	OTEL (cu STEEL WEIGHT)	OTEL (cu STEEL WEIGHT)	OTEL (cu STEEL WEIGHT)	OTEL (cu STEEL WEIGHT)	OTEL (cu STEEL WEIGHT)
PRECAST TYPE	PCS	(m ³)	(kg)	(kg)	(kg)	(kg)	(kg)	(kg)	(kg)
ZR1	28	1,98	2240,00	5,00	11,05	38,00	194,40	232,40	11,70

ARMARE ELEMENT PREFABRICAT ZR1
REINFORCING PRECAST CONCRETE UNIT ZR1



EXTRAS ARMATURA BILL OF REINFORCEMENT

Marca	Ø	Lungimea une bare / Bar length No. pcs.	Nr. Bare / No. pcs.	Lungimi pe diametre / Lengths into diameters	PC52	Ø12
1	12	4,05	20		81,00	
2	12	3,00	20		60,00	
3	8	1,85	20		37,00	
4	8	2,05	20		41,00	
5	12	1,55	20		31,00	
6	8	1,90	16		30,40	
7	8	0,30	16		4,80	
8	12	0,75	16		12,00	
Lungimi totale pe Ø				96,00	78,00	194,00
Greutate pe ml.				0,395	0,395	0,988
Greutate totale pe Ø				38,00	30,90	163,50
GREUTATE TOTALA				38,00		194,40

NOTA
Pentru toate armaturile, raza donului de indoire va fi egala cu 3d
NOTE
For all reinforcements, the radius of mandrel for bending is equal to 3d

BETON ARMAT: vibrat: C 25/30 -P4-T3-III-A 32,5/0...16
 OTEL BETON: OB37; PC52
 LAMINATE: S235J2G3 (QL37)
 REINFORCED CONCRETE: vibrated: C 25/30 -P4-T3-III-A 32,5/0...16
 REINFORCEMENT: OB37; PC52
 ROLLED STEEL: S235J2G3 (QL37)

CLIENT / CLIENT

GUVERNUL ROMANIEI
ROMANIAN GOVERNMENT

PROIECT FINANȚAT DE UNIUNEA EUROPEANĂ A EUROPEAN UNION FINANCED PROJECT

C.N.C.F. "C.F.R." - S.A.

CONSULTANT / CONSULTANT

OBERMEYER
FLAKEN + ASSOCIATES GmbH

TECNIC
Consulting Engineers

SUBCONTRACTANT / SUBCONTRACTOR

A. Stănilău - Dniulescu

12.2011

Denumire desen / Drawing Title:

STATA APATA - RAMPA - ZID DE SPRIJIN ZR1 - COFRAU SI ARMARE /
APATA RAILWAY STATION - LOADING LEDGE.
RETAINING WALL ZR1 TYPE - FORMWORK AND REINFORCEMENT DETAILS

Scale: 1:20

DATE: 12.2011

12A2(630X94)=0.37m²