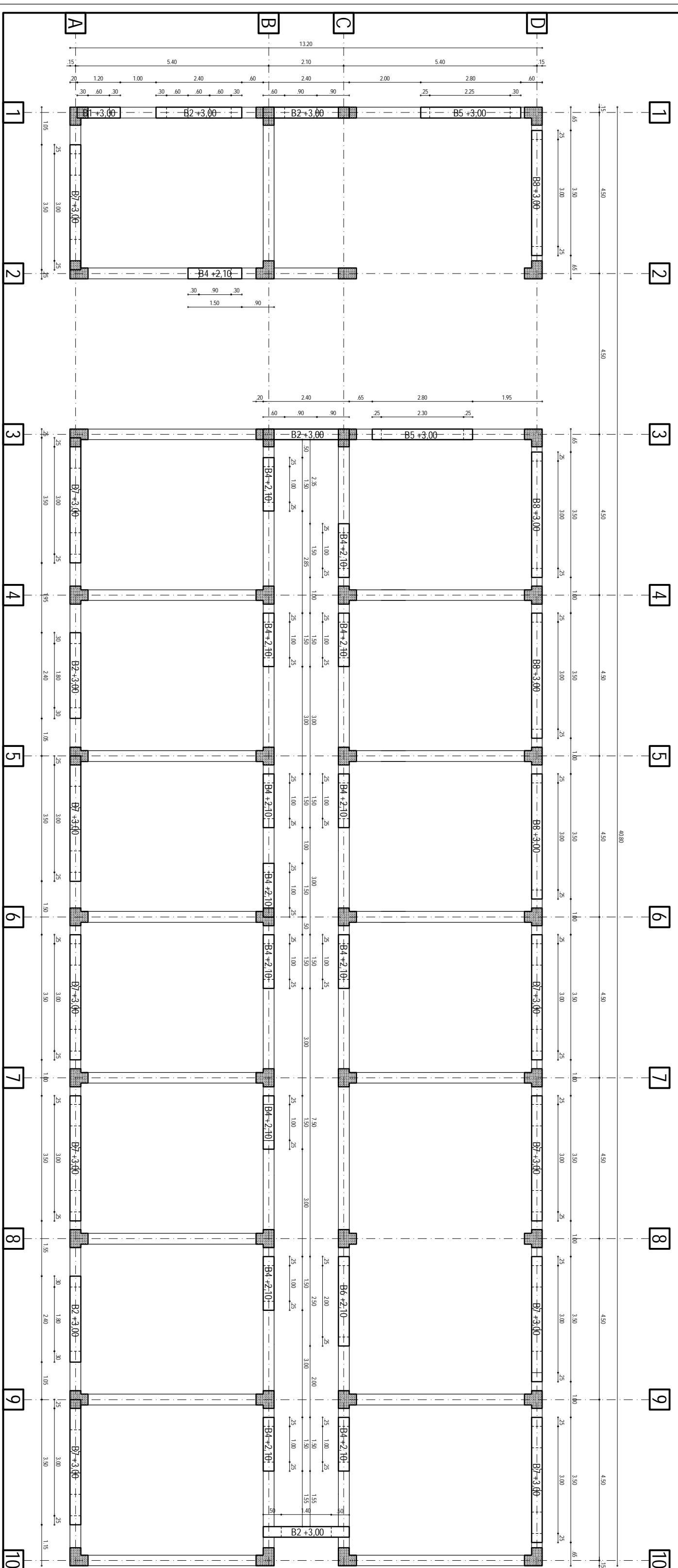
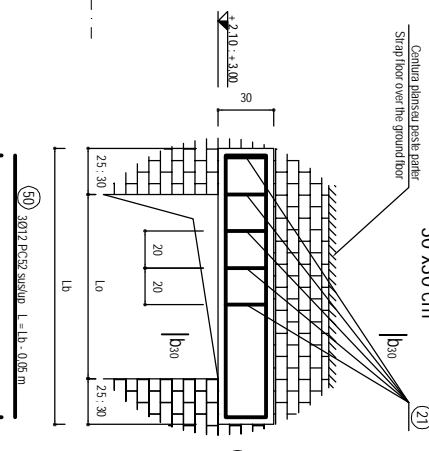


PLAN BIANDRUGI PARTER sc: 1:50  
PLAN FOR GROUND FLOOR LINTELS sc: 1:50



BIANDRUG / LINTEL - sc: 1:20  
30 x 30 cm



TABEL BIANDRUGI / TABLE OF LINTELS

Tip	LT	Reț.	Q	LT	LT	Reț.	Q	LT	LT	Reț.	Q	LT	LT	Reț.	Q	TOTAL
B1	1:20	1	3012	1,55	1,15	7,20	7	3,18	3,18	7,20						
B2	2:40	6	3016	2,15	2,35	19,26	13	5,91	25,46	115,68						
B4	1:30	14	3012	1,85	1,45	10,48	8	3,64	50,96	123,06						
B5	2:30	2	3020	3,15	2,15	37,03	15	6,82	13,64	74,06						
B6	2:50	1	3012	2,65	2,45	14,12	13	5,91	14,12							
B7	3:50	10	3012	3,65	3,45	19,43	18	8,18	81,80	194,59						
B8	3:50	4	3016	3,65	3,45	27,42	18	8,18	32,72	109,68						
TOTAL		38							2237	638,3						

NOTA:  
Pentru toate armaturile, raza domului de îndoire va fi egală cu 3d  
NOTE:  
For all reinforcements, the radius of mandrel for bending is equal to 3d

Coțarea armării în "ort":  
Coțarea conductorilor metalici în "ort"  
Reinforcement dimensions in "ort"  
Dimensions of metallic elements in "ort"

BETON ARMAT, tipul:  
C18/20-P4-13-11A S2,5 0...16  
OTEL BETON : OB37, PC52  
LAMINATE : S235L235 (Q137)  
REINFORCED CONCRETE, brand:  
C18/20-P4-13-11A S2,5 0...16  
REINFORCEMENT : OB37, PC52  
ROLLED STEEL : S235L235 (Q137)  
Acoperirea cu beton a armaturilor de rezistență:  
c = 2,5 cm, la biandrug  
Concrete covering of the main reinforcing bars:  
c = 2,5 cm for lintels

30.00 = 40.60 NSS

CLIENT / CLIENT: C.A.C.F. - C.F.R. - S.A.

CONSULTANT / CONSULTANT: R. LUZZA, C. GAMBELL, G. GAMBELL

SUBCONTRACTANT / SUBCONTRACTOR: A. ȘTEFĂNĂ, ȘTEFĂNĂ

ARHITECTURA STĂTELOR ARHITECTURA - PLAN BIANDRUGI PARTER  
ARHITECTURA RAILWAY STATION BUILDING - PLAN FOR GROUND FLOOR LINTELS

Coordonator / Coordinator: [Signature]

Deziner / Designer: [Signature]