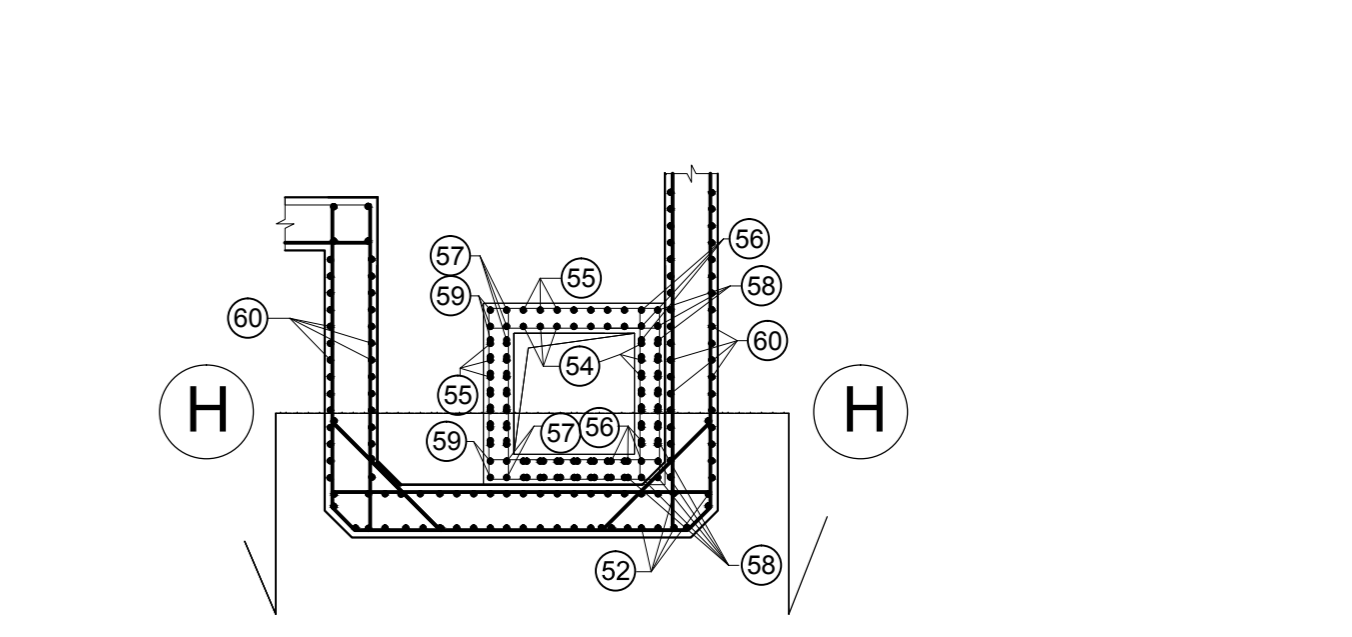
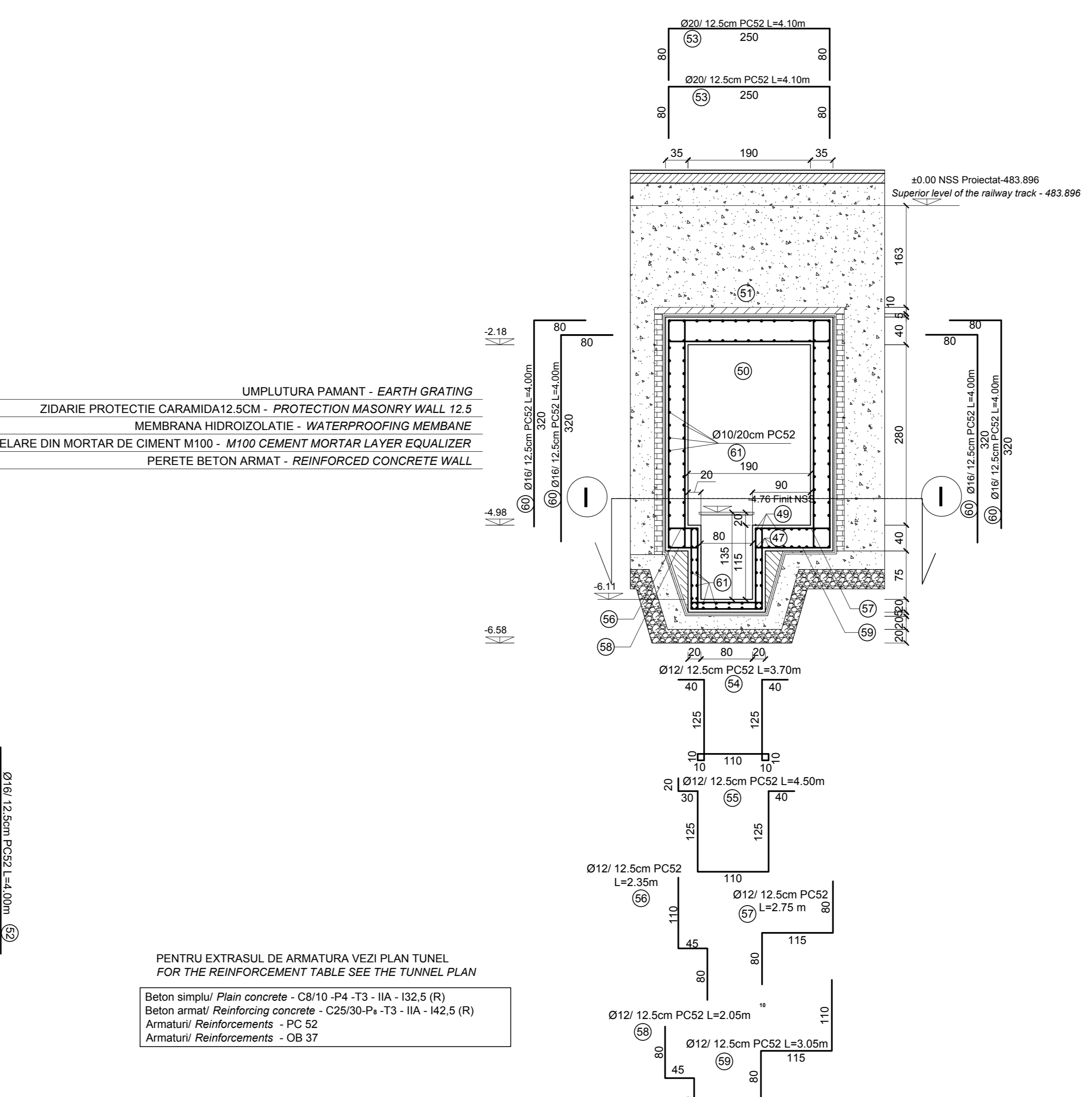
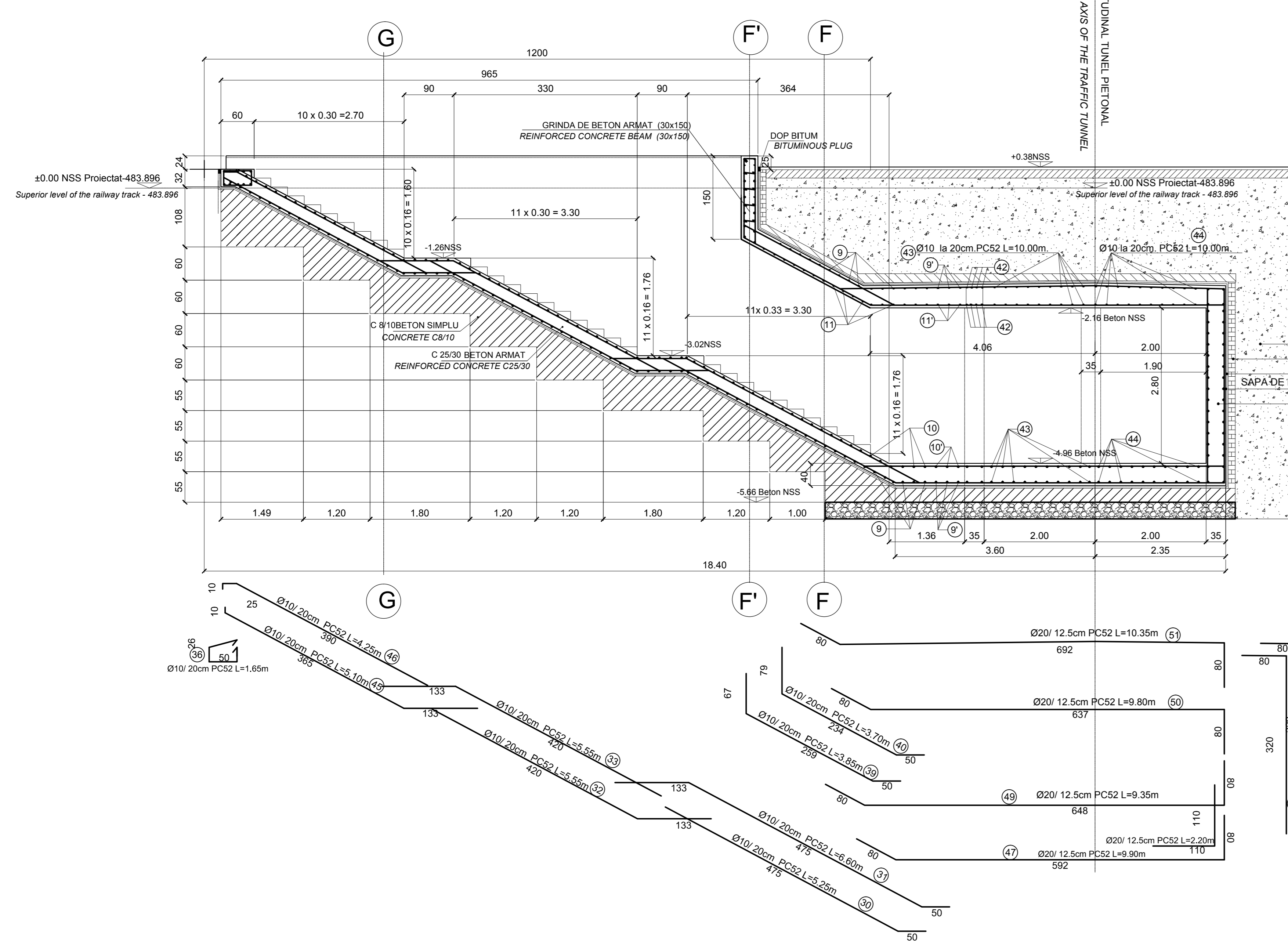


SECTIUNE : B-B scara 1:50
SECTION : B-B scale 1:50

SECTIUNE : H-H scara 1:50
SECTION : H-H scale 1:50

SECTIUNE : I-I scara 1:50
SECTION : I-I scale 1:50



PENTRU EXTRASUL DE ARMATURA VEZI PLAN TUNEL
FOR THE REINFORCEMENT TABLE SEE THE TUNNEL PLAN

Beton simplu / Plain concrete - C8/10 - P4 - T3 - IA - I32.5 (R)
Beton armat / Reinforcing concrete - C25/30 - P4 - T3 - IA - I42.5 (R)
Armaturi / Reinforcements - PC 52
Armaturi / Reinforcements - OB 37

D					
C					
B					
A					
Index	Date	Modificari	Proiectant	Approbat	Approbat CFR
Index	Date	Modification/Revision	Designer	Approved Consultant	Approved CFR
GUVERNUL ROMANIEI ROMANIAN GOVERNMENT		PROIECT FINANAT DE UNIUNEA EUROPEANA EUROPEAN UNION FINANCED PROJECT		C.N.C.F. "C.F.R." - S.A.	
CLIENT / CLIENT					
CONSULTANT / CONSULTANT				Date	Semnatura
Approbat	Responsabil	R. Luizza	12.2011		
Approbat	Subcontractant				
Approbat	Coordonator	C. Gambelli	12.2011		
Verificat	Verificator	Giuseppe Fioravanti	12.2011		
Checkat	Verifier				
SUBCONTRACTANT / SUBCONTRACTOR					
Approbat	Responsabil	A. Stanciu - Dinulescu	12.2011		
Approbat	Subcontractant				
Intocmit	Proiectant	Catalin Alexandrescu	12.2011		
Elaborat	Designer				
Reabilitarea liniei de cale ferata Brasov - Simena, parte componenta a coridorului IV Pan European, pentru circulatia trenurilor cu viteza maxima de 160 km/h.				Proiect/Project	
Tronsoanel : Brasov - Sighisoara				2004/RO/18/PA/003	
Rehabilitation of the railway line Brasov - Simena, component Part of the IV Pan-European Corridor, for the train circulation with maximum speed of 160 km/h.				Faza / Phase:	
Section : Brasov - Sighisoara				P. Th. / T. D.	
				D.E. / E.D.	
Denumire desen / Drawing Title :					
HALTA SASCHIZ TUNEL PIETONAL DETALII ARMARE SECTIUNE TRANSVERSALA B-B - SASCHIZ FLAG STATION PEDESTRIAN TUNNEL REINFORCEMENT DETAILS CROSS SECTION B-B					
Codificare / Codification System		Scara / Scale	LOT / LOT	N. / No	
E A 5 1		1:50	3	41/01	