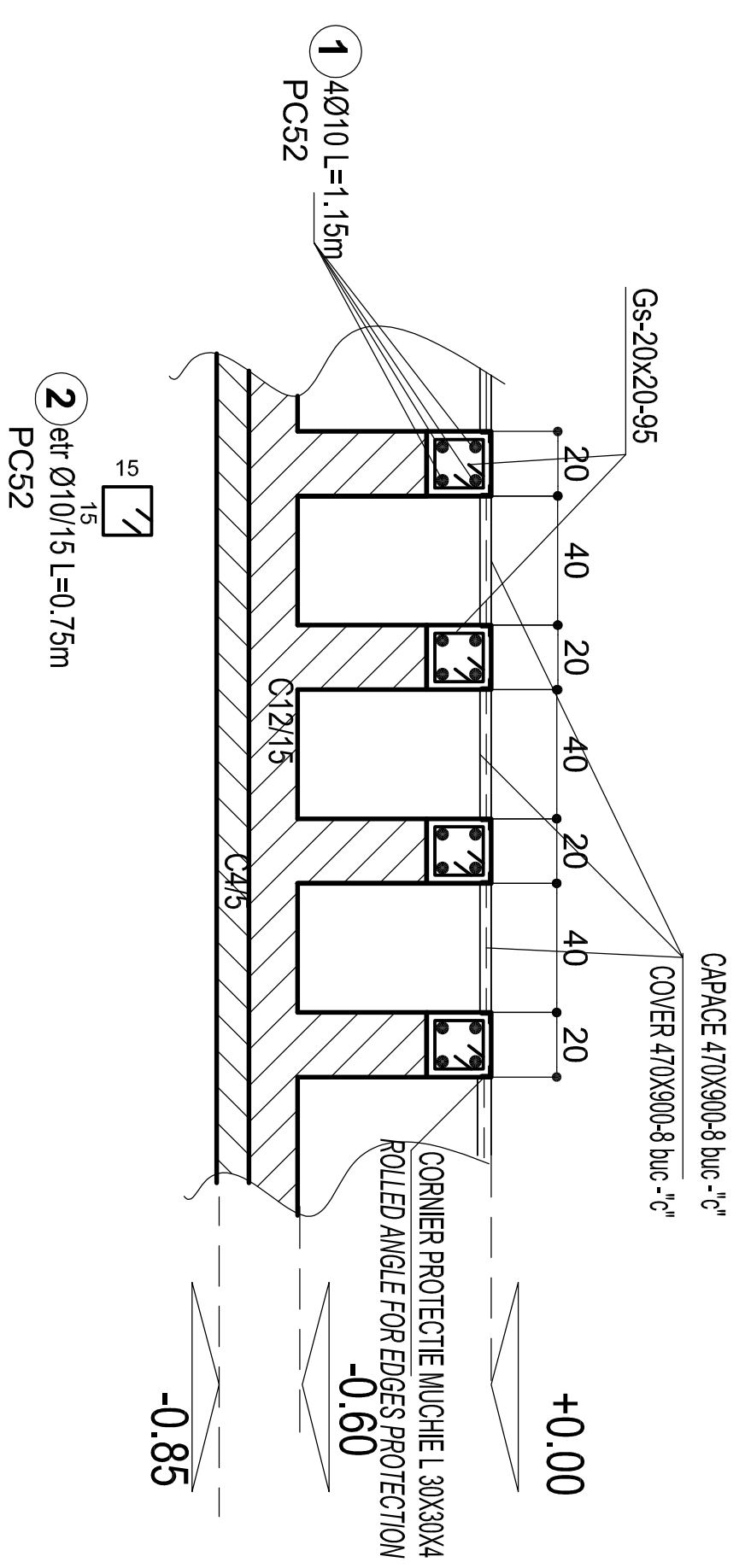
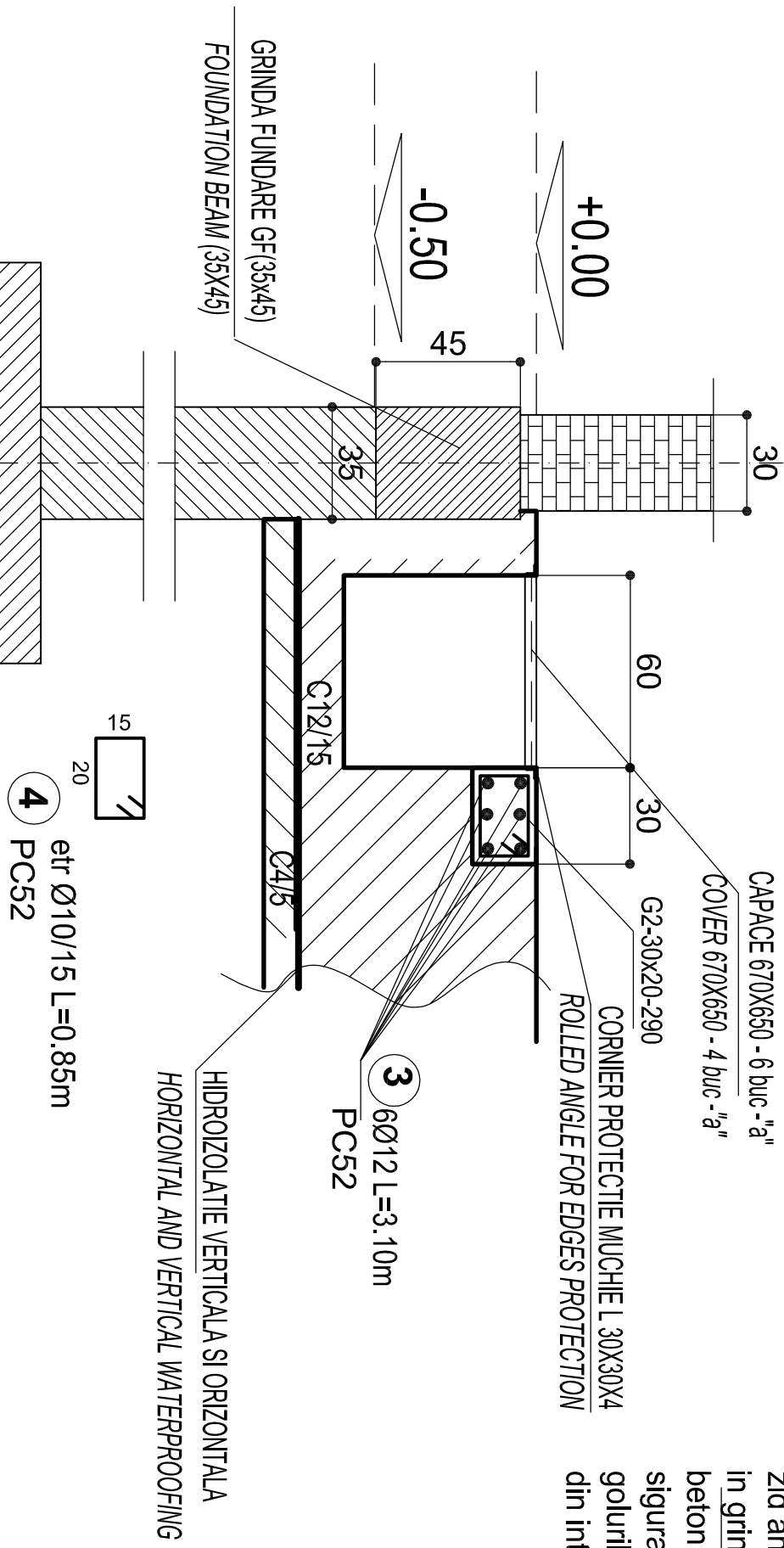


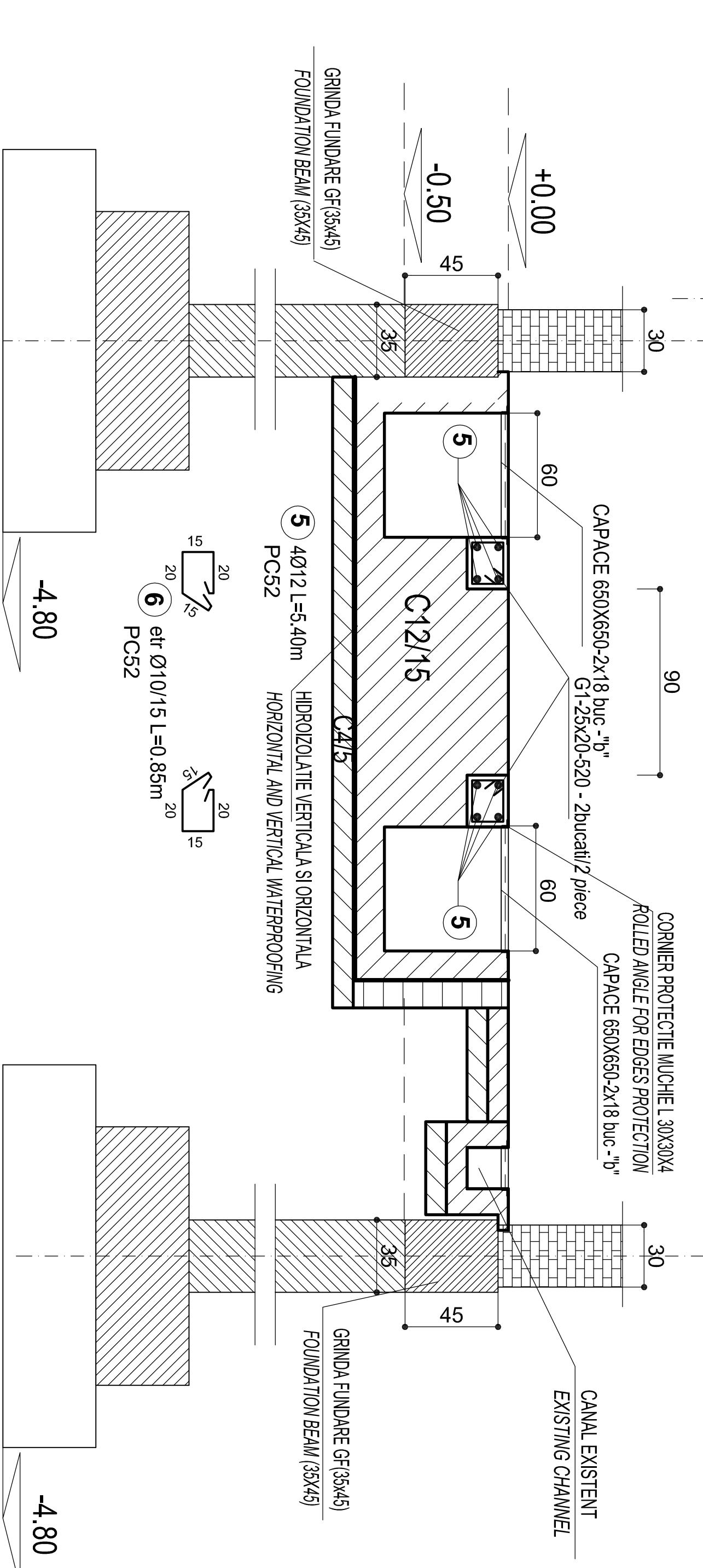
Sect a-a sc. 1 : 25



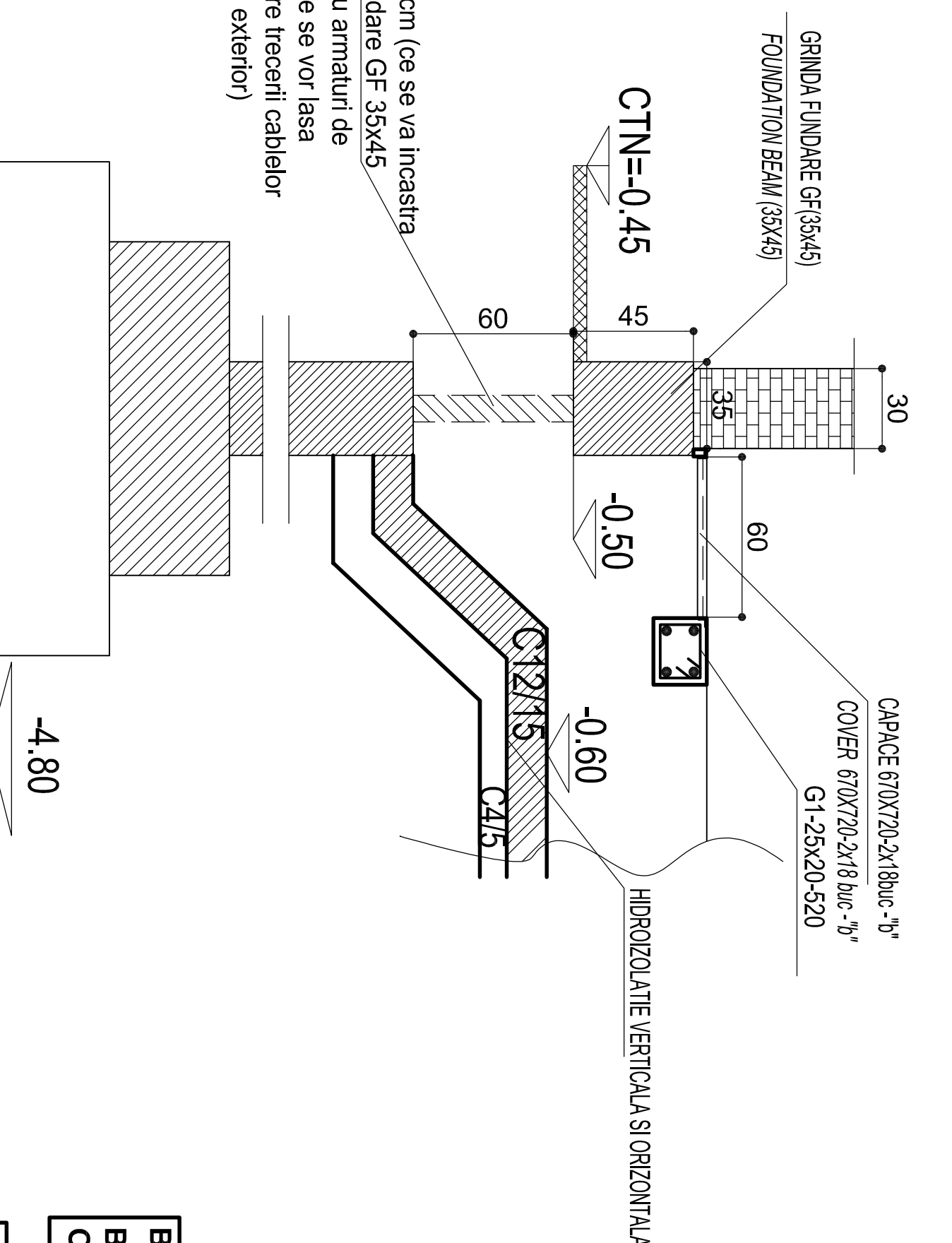
sect b-b sc. 1 : 25



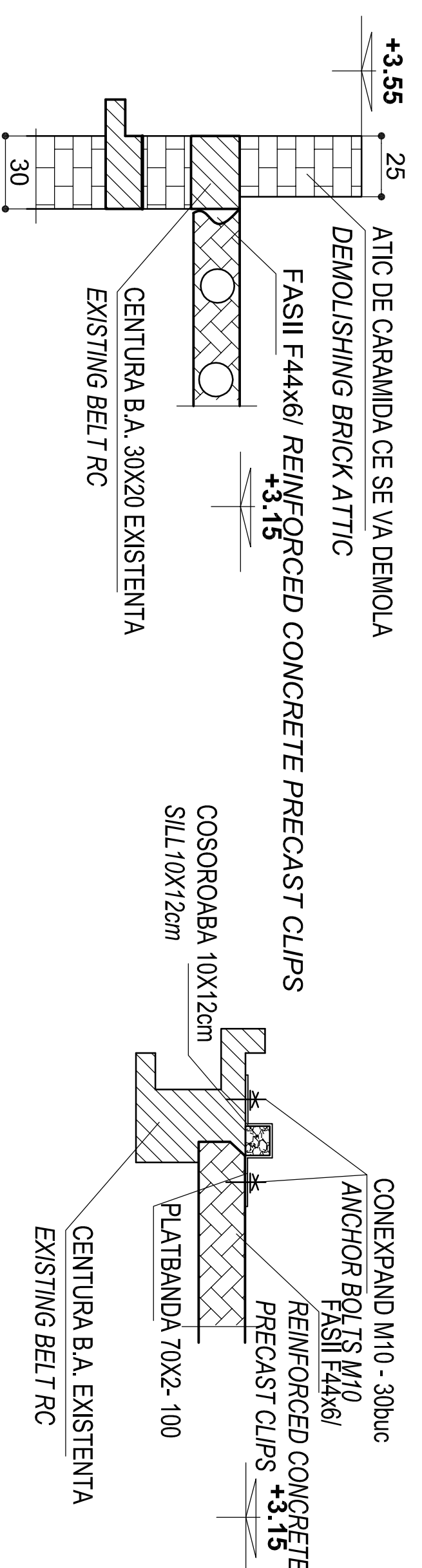
sect c-c sc. 1 : 25



sect d sc. 1 : 25



Detalii prindere sarpanata/Details roof structure



NOTA:
DE CENTURA DIN BETON ARMAT EXISTENTA SE PRINDE COSOROABA PRIN INTERMEDIU BARELOR DE ANCORARE Ø6 / 10 OB 37
THE SILL WILL BE FIXED TO THE EXISTING CONCRETE BELT WITH Ø6 / 10 OB 37 ANCHOR BARS

BETON ARMAT / REINFORCED CONCRETE C12/15
BETON SIMPLU / CONCRETE C4/5
OTEL BETON / REINFORCING STEEL PC52

DIMENSIONI CAPACE TS 5
670X650 - 6 buc - "a"
650X650 - 2x18 buc - "b"
470X900 - 8 buc - "c"

CORNER PROTECTIE MUCHIE L. 300X204 S25S1R2Z
ROLLED ANGLE FOR EDGES PROTECTION
1.78 Kg/m - 85.00m = 151.30Kg
CONEXIUNEA M10 - 60buc/piese
PLATBANDA 70X2 - 100 - 30buc/piese - 0.1098kg/buc=3.297kg
EXTRAS ARMATURA / REINFORCEMENT EXTRAS

ITEM	NR	DIAM	BARA	LUNG	LUNGIMI / DIAMETRE	PCS2	Ø	Ø 12
1	10	36	1.15	41.4	40.5	18.6		
2	10	54	0.75	3.10	18.6	43.2		
3	12	6	3.10	17.0	43.2			
4	10	20	0.85	63.75				
5	12	8	5.40					
6	10	75	0.85					
LUNGIME / DIAMETRE					0.0	181.3	61.8	
LUNGIME / m / DIAMETRE					0.395	0.617	1.578	
GREUTATE / DIAMETRE					0.0	111.8	97.5	
TOTAL					0.0	112.0	98.0	
TOTAL GENERAL (PCS2) Kg :							210.0	

Index	Date	Modificari / Revision	Proiectant	Approbat Consultant	Approbat CRP
A					
B					
C					
D					

GUVERNUL ROMANIEI / ROMANIAN GOVERNMENT
EUROPEAN UNION FINANCED PROJECT

CLIENT / CLIENT
C.N.C.F. "C.F.R." - S.A.

CONSULTANT / CONSULTANT
R. Luizza
12.2011
C. Gambelli
12.2011
Giuseppe Fioravanti
12.2011

SUBCONTRACTANT / SUBCONTRACTOR
A. Sarnicu - Dimulescu
12.2011
Anca Rus
12.2011

Denuntie desen / Drawing Title :
Substata de tractie MURENI / MURENI Traction Substation

Detalii si sectiuni canale - Bloc de comanda / Details and section channel - Control building