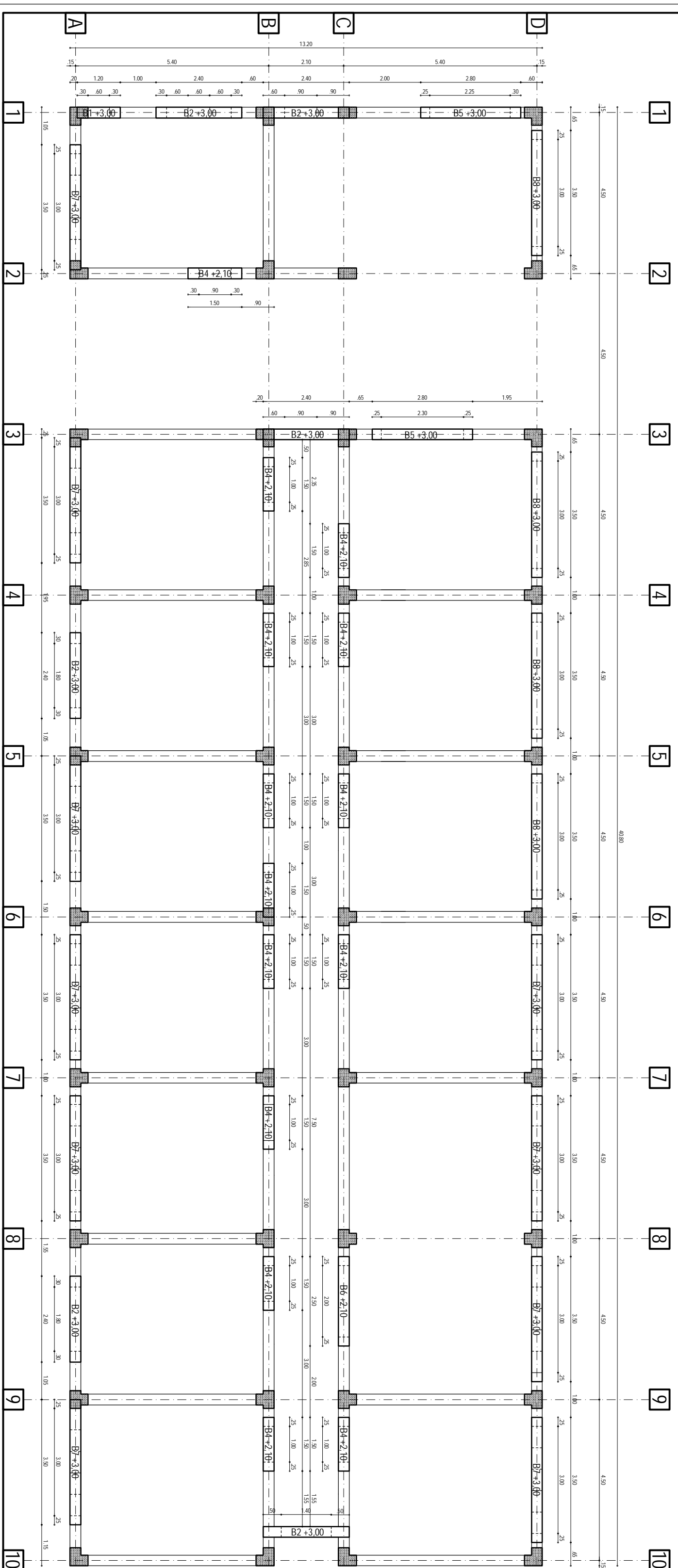
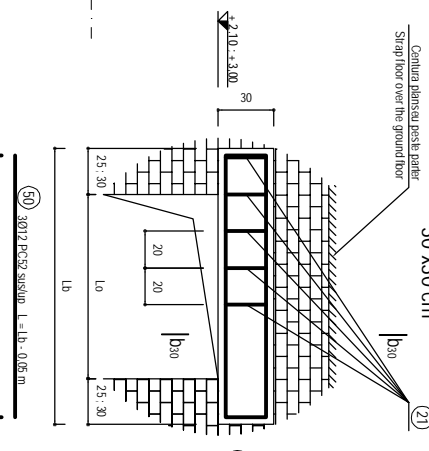


PLAN BIUANDRUGI PARTER sc: 1:50  
PLAN FOR GROUND FLOOR LINTELS sc: 1:50



BIUANDRUGI / LINTEL - sc: 1:20  
30 x 30 cm



TABEL BIUANDRUGI / TABLE OF LINTELS

ID	LT	REZ.	Q	LT	LT	REZ.	Q	LT	LT	REZ.	Q	TOTAL
VALUE	IN	Pos.	Q	LT	LT	REZ.	Q	LT	LT	REZ.	Q	VALUE
B1	1.20	1	3.012	1.55	1.15	7.20	7	3.18	3.18	7.20		
B2	2.40	6	3.016	2.15	2.35	19.28	13	5.91	55.46	115.68		
B4	1.50	14	3.012	1.85	1.45	13.26	8	3.64	50.96	123.06		
B5	2.80	2	3.020	3.15	2.15	37.08	15	6.82	13.84	74.06		
B6	2.50	1	3.012	2.65	2.45	14.12	13	5.91	5.91	14.12		
B7	3.50	10	3.012	3.65	3.45	19.46	18	8.18	81.80	194.50		
B8	3.50	4	3.016	3.65	3.45	21.42	18	8.18	32.21	109.68		
TOTAL	38								223.7	638.3		

NOTA:  
Pentru toate armaturile, raza de curbură de îndoire va fi eguală cu 3d  
NOTE:  
For all reinforcements, the radius of mandrel for bending is equal to 3d

Coțarea armării în "ort":  
Coțarea conductorilor metalici în "ort"  
Reinforcement dimensions in "ort"  
Dimensions of metallic elements in "ort"

BETON ARMAT, tipul:  
C18/20 - P4 - 13 - IIA S2,5 0...16  
OTEL BETON : OB37, PCS2  
LAMINATE : S235,235 (Q1.37)  
REINFORCED CONCRETE, brand:  
C18/20 - P4 - 13 - IIA S2,5 0...16  
ROLLED STEEL : S235,235 (Q1.37)  
Acceptarea cu beton a armaturilor de rezistență:  
c = 2,5 cm, la biuandrug  
Concrete covering of the main reinforcing bars:  
c = 2,5 cm for lintels

30.00 = 40.80 NSS

CLIENT / CLIENT: C.A.C.F. - C.F.R. - S.A.

CONSULTANT / CONSULTANT: R. LUZZA, C. GAMBELL, G. GAMBELL

SUBCONTRACTANT / SUBCONTRACTOR: A. ȘTEFĂLUȚĂ, ȘTEFĂLUȚĂ

CLADIREA STATIONII VĂNĂTORI - PLAN BIUANDRUGI PARTER  
VĂNĂTORI RAILWAY STATION BUILDING - PLAN FOR GROUND FLOOR LINTELS

Coordonator / Coordinator: Ștefan Ștefan

Desenator / Drawing Title: Ștefan Ștefan