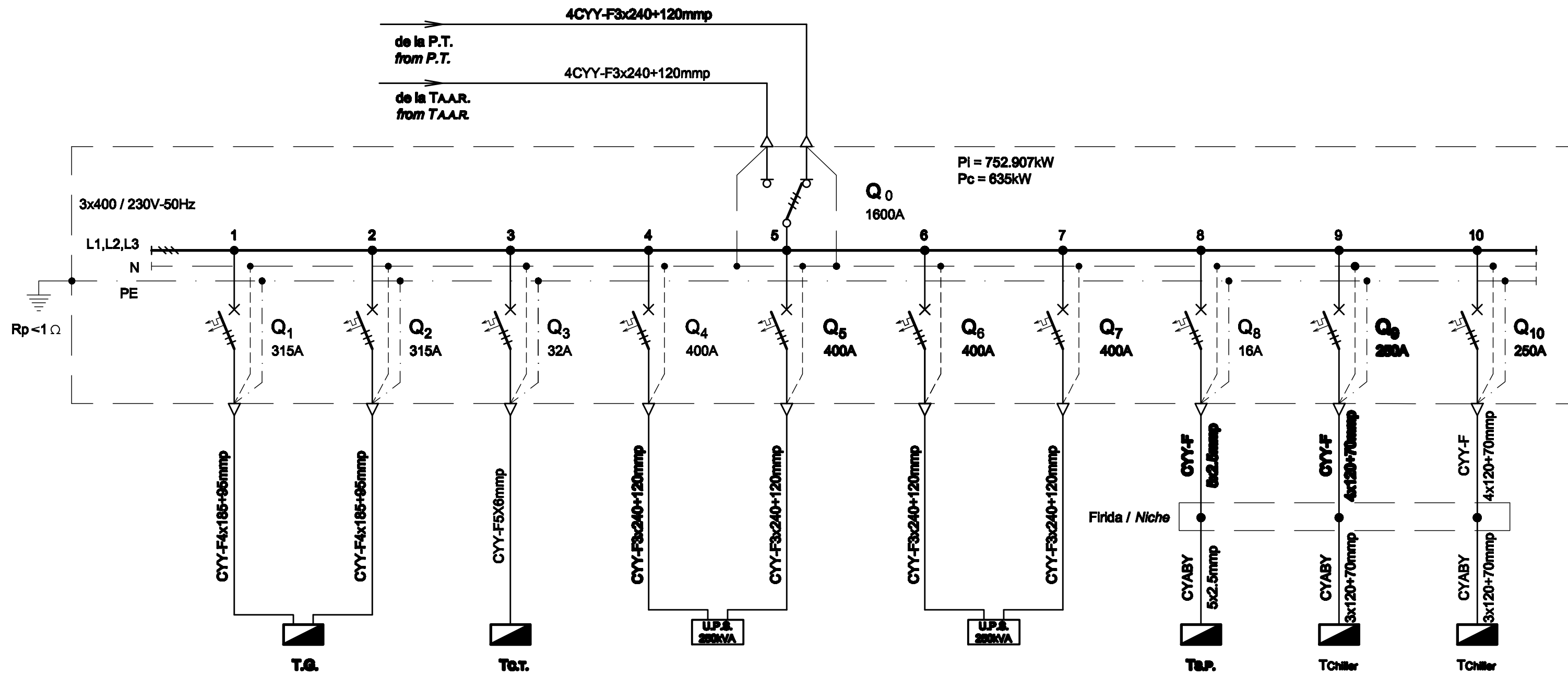


TABLOU ELECTRIC T.G.D.j.t. - SCHEMA MONOFILARA  
T.G.D.j.t. ELECTRIC BOARD - SINGLE-WIRE DIAGRAM



Nr. circuit Circuit number	1	2	3	4	5	6	7	8	9	10		
PI [kW]	201.867		19.65	200		200		1.39	130	130		
Destinația Destination	TABLOU ELECTRIC GENERAL - T.G. GENERAL ELECTRIC BOARD - T.G.		TABLOU ELECTRIC CENTRALA TERMICA - T.g.t. HEATING PLANT ELECTRIC BOARD - T.g.t.	ALIMENTARE U.P.S. U.P.S. SUPPLY		ALIMENTARE U.P.S. U.P.S. SUPPLY		STATE POMPARE TABLOU ELECTRIC - T.p. PUMPS STATION ELECTRIC BOARD - T.p.	ALIMENTARE CHILLER 1 (IN FUNCTION)	SUPPLY CHILLER 1 (IN FUNCTION)	ALIMENTARE CHILLER 2 (REZERVA)	SUPPLY CHILLER 2 (REZERVA)

TABLOU ELECTRIC T.G.D.j.t. - SPECIFICATIE DE APARATAJ  
T.G.D.j.t. ELECTRIC BOARD - EQUIPMENT SPECIFICATION

Nr. No.	Symbol	Denumirea aparatului Equipment denomination	Caracteristici tehnice Technical data	Buc. Pos.	Observatii Remarks
0	1	2	3	4	5
1	Q0	Inversor de sursa tripolar Three-poles source change-over switch	In=1600A Un=400V Uimp=8kV f=50Hz Icm=2.2kA	1	
2	Q1,Q2	Intrerupator automat tripolar, curba C Three-poles circuit breaker, curve C	In=315A Un=400V Icu=6kA f=50Hz	2	
3	Q3	Intrerupator automat tripolar, curba C Three-poles circuit breaker, curve C	In=32A Un=400V Icu=6kA f=50Hz	1	
4	Q4,Q5,Q6,Q7	Intrerupator automat tripolar, curba C Three-poles circuit breaker, curve C	In=400A Un=400V Icu=6kA f=50Hz	4	
5	Q8	Intrerupator automat tripolar, curba C Three-poles circuit breaker, curve C	In=16A Un=400V Icu=6kA f=50Hz	1	
6	Q9,Q10	Intrerupator automat tripolar, curba C Three-poles circuit breaker, curve C	In=250A Un=400V Icu=6kA f=50Hz	2	
7	-	Cutie / Box	IP54, Clasa I / Class I	1	

D					
C					
B					
A					
Indice Index	Data Date	Modificare Modification/Revision	Proiectant Designer	Aprobat Consultant Approved Consultant	Aprobat CFR Approved CFR



GUVERNUL ROMANIEI  
ROMANIAN GOVERNMENT

PROIECT FINANȚAT DE UNIUNEA EUROPEANĂ  
EUROPEAN UNION FINANCED PROJECT

CFR

C.N.C.F. "C.F.R." - S.A.



CONSULTANT / CONSULTANT			Data Date	Semnătură Signature
Aprobat Approved	Șef proiect Project manager	R. Liuzza	12.2011	<i>[Signature]</i>
Aprobat Approved	Coordonator Secțiune 1 Section 1 Coordinator	C. Gambelli	12.2011	<i>[Signature]</i>
Verificat Checked	Expert Verificator Checking Expert	G. Fioravanti	12.2011	<i>[Signature]</i>

SUBCONTRACTANT / SUBCONTRACTOR			Data Date	Semnătură Signature
Aprobat Approved	Responsabil Subconsultant Subconsultant Responsible	A.Stanciu - Dinulescu	12.2011	<i>[Signature]</i>
Înlocuit Elaborated	Proiectant Designer	D. Matei	12.2011	<i>[Signature]</i>

Reabilitarea liniei de cale ferată Brașov - Simeria, parte componentă a coridorului IV Pan European, pentru circulația trenurilor cu viteză maximă de 160 km/h,  
Tronsonul : Brașov - Sighișoara

Rehabilitation of the railway line Brașov - Simeria, component Part of the IV Pan-European Corridor, for the trains circulation with maximum speed of 160 km/h,  
Section : Brașov - Sighișoara

2004/RO/16/P/PA/003

Faza / Phase:  
D.E. / E.D.

Denumire desen / Drawing Title :

Tablou electric T.G.D.j.t. - Centru operațional de comandă;  
Operational command center- T.G.D.j.t. electric board

Codificare / Codification System	Scara / Scale	LOT / LOT	Nr. / No 01 / 01
E A 5 1 0 1 E 0 1 B X I E 0 0 1 9 0 1 5 1			