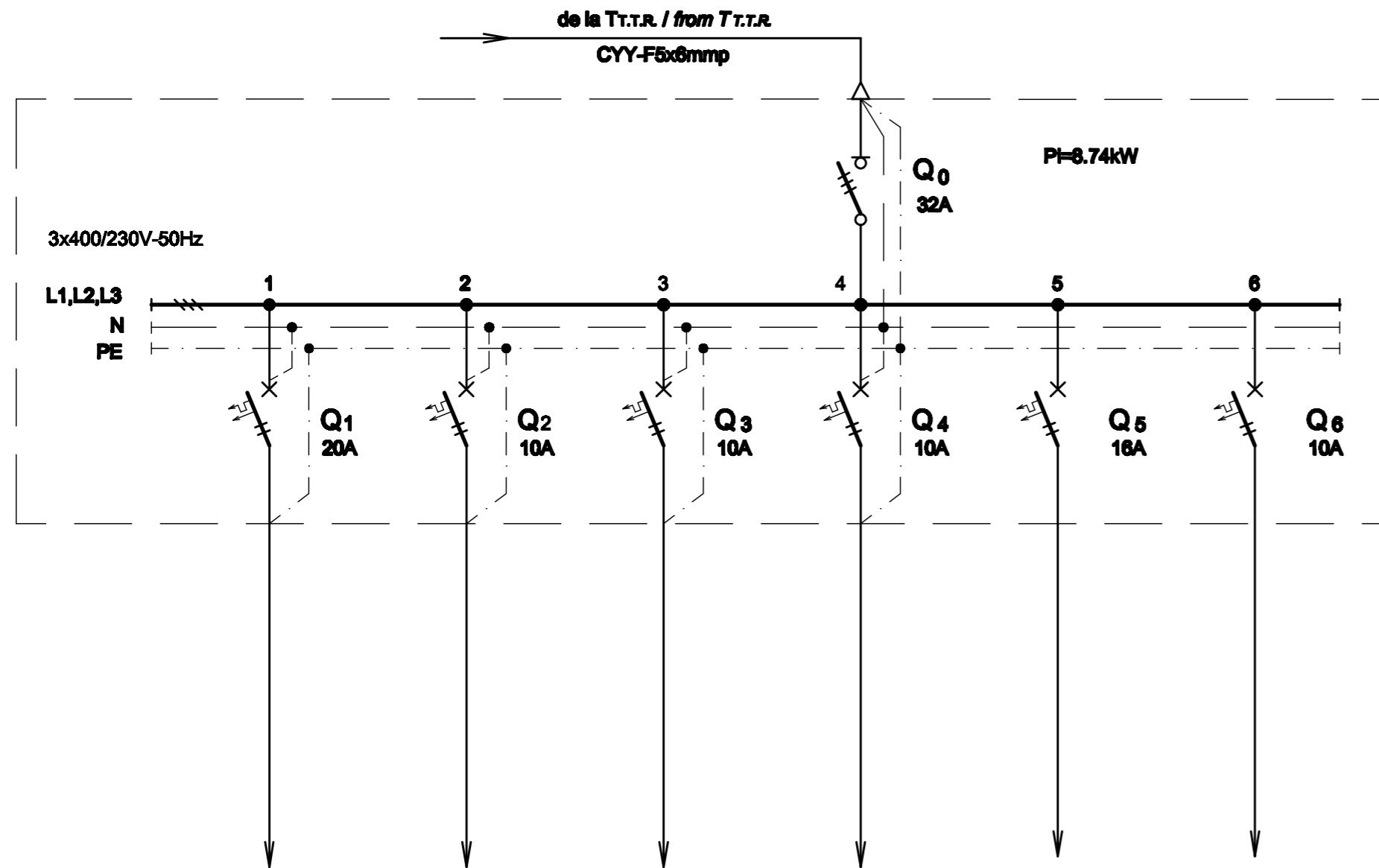


**TABLOU ELECTRIC T Echipamente - SCHEMA MONOFILARA**  
**T Echipamente ELECTRIC BOARD - SINGLE-WIRE DIAGRAM**

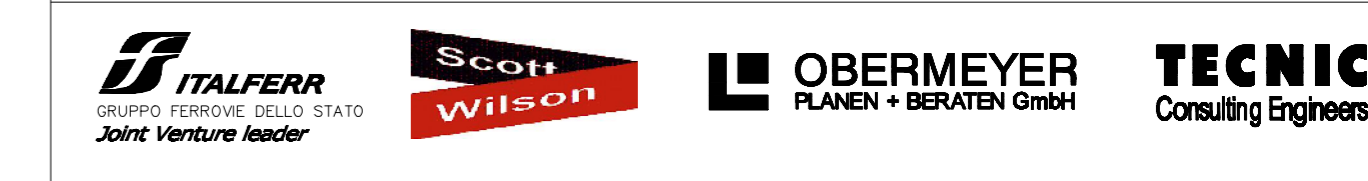


Nr. circuit Circuit number	1	2	3	4	5	6
Pi [kW]	3	0.74	1	1	2	1
Destinatia Destination	UPS (SERVER+ CONSOLA OAM LA TTR) UPS (SERVER+ CONSOLA OAM FOR TTR) 1Buc. / Piece	PANOU AFISARE PERON CU DOUA FETE SI CEAS TWO-SIDED AND CLOCK DISPLAY PANEL ON PLATFORM 2Buc. / Pieces	CABINET CABLARE STRUCTURATA CABINET FOR STRUCTURE WIRING 1Buc. / Piece	ECHIPAMENTE DIVERSE MISCELLANEOUS EQUIPMENT 1Buc. / Piece	REZERVA MONOFAZATA SINGLE-PHASE RESERVE	REZERVA MONOFAZATA SINGLE-PHASE RESERVE

**TABLOU ELECTRIC T Echipamente - SPECIFICATIE DE APARATAJ**  
**T Echipamente ELECTRIC BOARD - EQUIPMENT SPECIFICATION**

Nr. No.	Symbol	Denumirea aparatului Equipment denomination	Caracteristici tehnice Technical data	Buc. Pcs.	Observatii Remarks
0	1	2	3	4	5
1	Q0	Separator de sarcina tripolar fuzibil Three-poles switch-disconnector	In=32A Un=400V Uimp=8kV f=50Hz Icm=2,2kA	1	
2	Q1	Intrerupator automat bipolar, curba C Two-poles circuit breaker, curve C	In=20A Un=230V Icu=6kA f=50Hz	1	
3	Q2,Q3,Q4,Q6	Intrerupator automat bipolar, curba C Two-poles circuit breaker, curve C	In=10A Un=230V Icu=6kA f=50Hz	4	
4	Q5	Intrerupator automat bipolar, curba C Two-poles circuit breaker, curve C	In=16A Un=230V Icu=6kA f=50Hz	1	
5	-	Cutie / Box	IP30, Clasa I / Class I	1	

Indice Index	Data Date	Modificare Modification/Revision	Proiectant Designer	Aprobat Consultant Approved Consultant	Aprobat CFR Approved CFR
D					
C					
B					
A					



CONSULTANT / CONSULTANT			Data Date	Semnătură Signature
Aprobat Approved	Șef proiect Project manager	R. Liuzza	12.2011	<i>[Signature]</i>
Aprobat Approved	Coordonator Secțiune 1 Section 1 Coordinator	C. Gambelli	12.2011	<i>[Signature]</i>
Verificat Checked	Expert Verificator Checking Expert	G. Fioravanti	12.2011	<i>[Signature]</i>

SUBCONTRACTANT / SUBCONTRACTOR				
Aprobat Approved	Responsabil Subconsultant Subconsultant Responsible	A.Stanciu - Dinulescu	12.2011	<i>[Signature]</i>
Înlocuit Elaborated	Proiectant Designer	D. Matei	12.2011	<i>[Signature]</i>

Reabilitarea liniei de cale ferata Braşov - Simeria, parte componentă a coridorului IV Pan European, pentru circulația trenurilor cu viteza maximă de 160 km/h,  
**Tronsonul : Braşov - Sighişoara**  
 Rehabilitation of the railway line Braşov - Simeria, component Part of the IV Pan-European Corridor, for the trains circulation with maximum speed of 160 km/h,  
**Section : Braşov - Sighişoara**

**Proiect/Project**  
 2004/RO/16/P/PA/003  
**Faza / Phase:**  
 D.E. / E.D.

Denumire desen / Drawing Title :  
**Tablou electric T Echipamente - Stația Stupini;**  
**T Echipamente electric board**

Codificare / Codification System	Scara / Scale	LOT / LOT	Nr. / No 01 / 01
E A 5 1 0 1 E 0 3 B X I E 0 0 1 1 0 4 8 1			