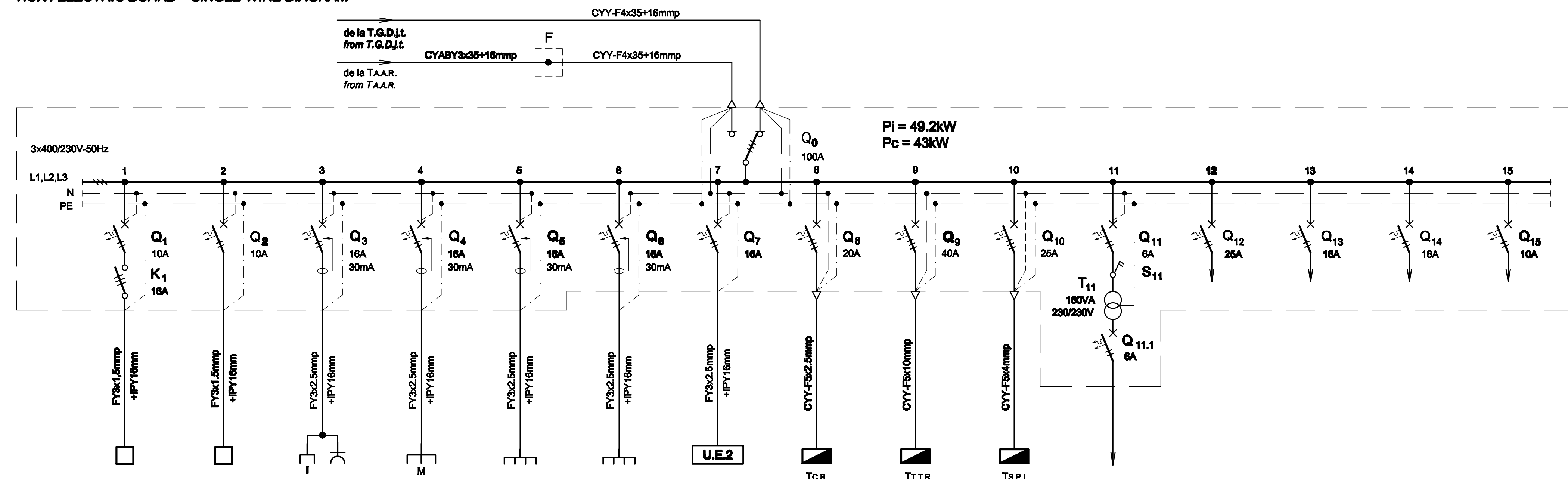
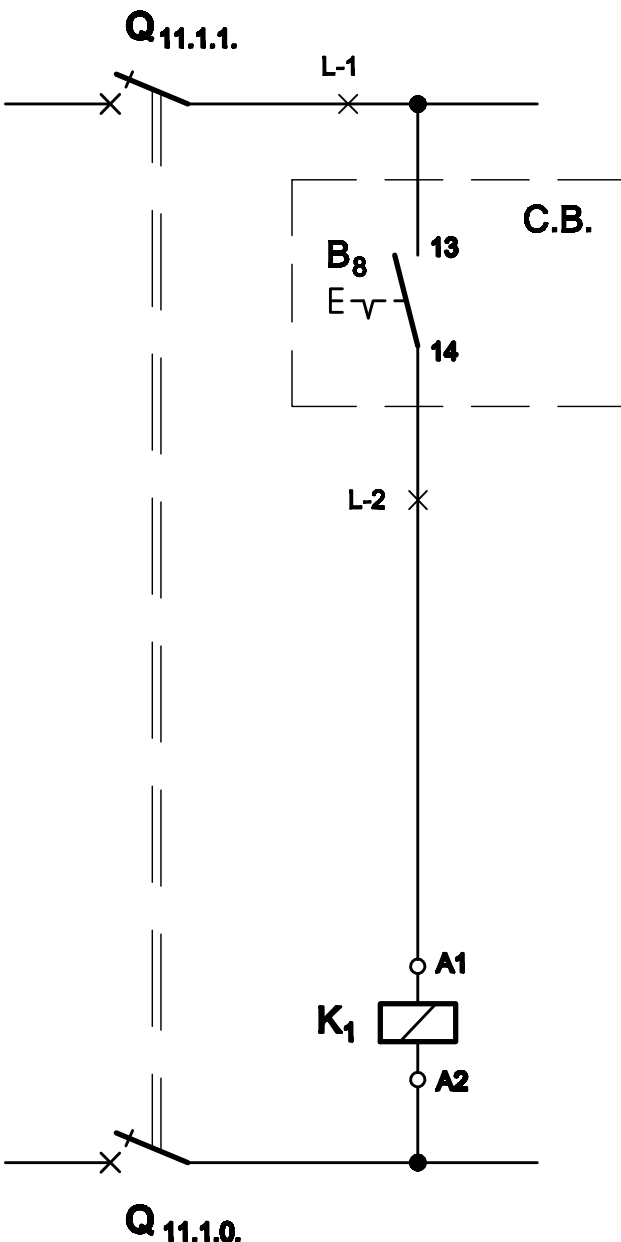


**TABLOU ELECTRIC T.C.V. - SCHEMA MONOFILARA**  
**T.C.V. ELECTRIC BOARD - SINGLE-WIRE DIAGRAM**



Nr. circuit Circuit number	1	2	3	4	5	6	7	8	9	10	11	12	13	14	15
Pi [kW]	0.4	0.4	2	2	2	2	1.2	6.1	21.94	3	0.16	3	2	2	1
Destinatia Destination	HOL CENTRAL / SALA DE ASTEPTARE, VESTIBUL CENTRAL HALL / WAITING ROOM, VESTIBUL 4LL / Lamp	SEF STATIE, BIROU MISCARE OFFICE, MOVEMENT OFFICE 4LL / Lamp	HOL CENTRAL / SALA DE ASTEPTARE CENTRAL HALL / WAITING ROOM 2LP / Sockets outlet	SEF STATIE, BIROU MISCARE OFFICE, MOVEMENT OFFICE CENTRAL HALL / WAITING ROOM 3LP / Sockets outlet	SEF STATIE OFFICE 3LP / Sockets outlet	BIROU MISCARE MOVEMENT OFFICE 3LP / Sockets outlet	UNITATE EXTERIOARA DE CLIMATIZARE SISTEM MONOSPLIT OUTDOOR UNIT AIR CONDITIONING SYSTEM MONOSPLIT 1Buc. / Piece	CASA BILETE TABLOU ELECTRIC - T.C.B. TICKETING ELECTRIC BOARD - T.C.B.	TABLOU ELECTRIC - T.T.T.R. ELECTRIC BOARD - T.T.T.R.	STATIE POMPARE PENTRU STINGERE INCENDIU TABLOU ELECTRIC - T.S.P.I. PUMPING STATION FOR FIGHTING ELECTRIC BOARD - T.S.P.I.	CIRCUIT COMANDA ILUMINAT INTERIOR CONTROL CIRCUIT INTERIOR LIGHTING	REZERVA MONOFAZATA SINGLE-PHASE RESERVE	REZERVA MONOFAZATA SINGLE-PHASE RESERVE	REZERVA MONOFAZATA SINGLE-PHASE RESERVE	REZERVA MONOFAZATA SINGLE-PHASE RESERVE



PROTECTIE CIRCUIT DE COMANDA	COMANDA ILUMINAT HOL CENTRAL / SALA ASTEPTARE, VESTIBUL
PROTECTION OF THE COMMAND CIRCUIT	LIGHTING COMMAND CENTRAL HALL / WAITING ROOM, VESTIBUL

**TABLOU ELECTRIC T.C.V. - SPECIFICATIE DE APARATAJ / T.C.V. ELECTRIC BOARD - EQUIPMENT SPECIFICATION**

Nr. No.	Simbol Symbol	Denumirea aparatului Equipment denomination	Caracteristici tehnice Technical data	Buc. Pcs.	Observatii Remarks
1	Q0	Inversor de sursa tripolar Three-poles source change-over switch	In=100A Un=400V Uimp=6kV f=50Hz Icm=2.2kA	1	
2	Q1,Q2,Q15	Intrerupator automat bipolar, curba B Two-poles circuit breaker, curve B	In=10A Un=230V Icu=6kA f=50Hz	3	
3	Q3,Q4,Q5,Q8	Intrerupator automat bipolar cu protectie la curent diferential rezidual, curba C / Two-poles circuit breaker with protection at residual differential current device, curve C	In=16A Un=230V Icu=6kA f=50Hz ΔIn=0,03A Tip A Nivel de imunitate 250A la forma de unda 8/20 μS Level of immunity 250A to wave form 8/20 μS	4	
4	Q8	Intrerupator automat tripolar, curba C Three-poles circuit breaker, curve C	In=20A Un=400V Icu=6kA f=50Hz	1	
5	Q9	Intrerupator automat tripolar, curba C Three-poles circuit breaker, curve C	In=40A Un=400V Icu=6kA f=50Hz	1	
6	Q7,Q13,Q14	Intrerupator automat bipolar, curba C Two-poles circuit breaker, curve C	In=16A Un=230V Icu=6kA f=50Hz	3	
7	Q10,Q12	Intrerupator automat tripolar, curba C Three-poles circuit breaker, curve C	In=25A Un=400V Icu=6kA f=50Hz	2	
8	K1	Contacteur electromagnetic tripolar de curent alternativ / Three-poles electromagnetic a.c. contactor	In=16A Un=400A Uc=230V f=50Hz	1	

0	1	2	3	4	5
9	B2	Celula fotoelectrica Photoelectric cell	Tf=-40°C...+70°C IP66	1	
10	Q11,Q11.1	Intrerupatoare automate bipolare, curba D / Two-poles circuit breaker, curve D	In=6A Un=230V f=50Hz Icu=10kA	2	
11	T11	Transformator monofazat uscat de comanda / Single-phase dry-type command transformer	Sn=160VA U1n=230V U2n=230V f=50Hz	1	
12	B8	Buton de comanda luminoase cu retineri / Light command button with retainer	Ui=500V In=6A f=50Hz IP67	1	Butonul se va monta in C.B. (cutie cu butoane) Button will be installed in C.B. (box of buttons)
13	L	Clema de racordare Connection clamp	Un=660V In=16A f=50Hz	2	
14	S11	Comutator cu came cu doua pozitii si un etaj / Cam switch with two positions and one floor	Un=500V In=16A f=50Hz	1	
15	-	Cutie / Box	IP30, Clasa I / Class I	1	

D					
C					
B					
A					
Indice Index	Data Date	Modificare Modification/Revision	Proiectant Designer	Aprobat Consultant Approved Consultant	Aprobat CFR Approved CFR
				PROIECT FINANȚAT DE UNIUNEA EUROPEANĂ EUROPEAN UNION FINANCED PROJECT	
		C.N.C.F. "C.F.R." - S.A.			
CLIENT / CLIENT					
CONSULTANT / CONSULTANT		Data Date		Semnatura Signature	
Aprobat Approved	Șef proiect Project manager	R. Liuzza		12.2011	
Aprobat Approved	Coordonator Secțiune 1 Section 1 Coordinator	C. Gambelli		12.2011	
Verificat Checked	Expert Verificator Checking Expert	G. Fioravanti		12.2011	
SUBCONTRACTANT / SUBCONTRACTOR		Responsabil Subcontractant Subcontractant Responsible		A.Stanciu - Dinulescu	
Intocmit Elaborated		Proiectant Designer		D. Matei	
Reabilitarea liniei de cale ferata Braşov - Simeria, parte componentă a a coridorului IV Pan European, pentru circulația trenurilor cu viteză maximă de 160 km/h, Tronsonul : Braşov - Sighişoara Rehabilitation of the railway line Braşov - Simeria, component Part of the IV Pan-European Corridor, for the trains circulation with maximum speed of 160 km/h, Section : Braşov - Sighişoara		2004/RO/16/PA/003		Faza / Phase: D.E. / E.D.	
Denumire desen / Drawing Title : <b>Tablou electric T.C.V. - Stația Stupini;                  Stupini station - T.C.V. electric board</b>					
Codificare / Codification System		Scara / Scale		LOT / LOT	
E A 5 1		0 1		E 0 3 B X I E 0 0 1 1 0 4 3 1	