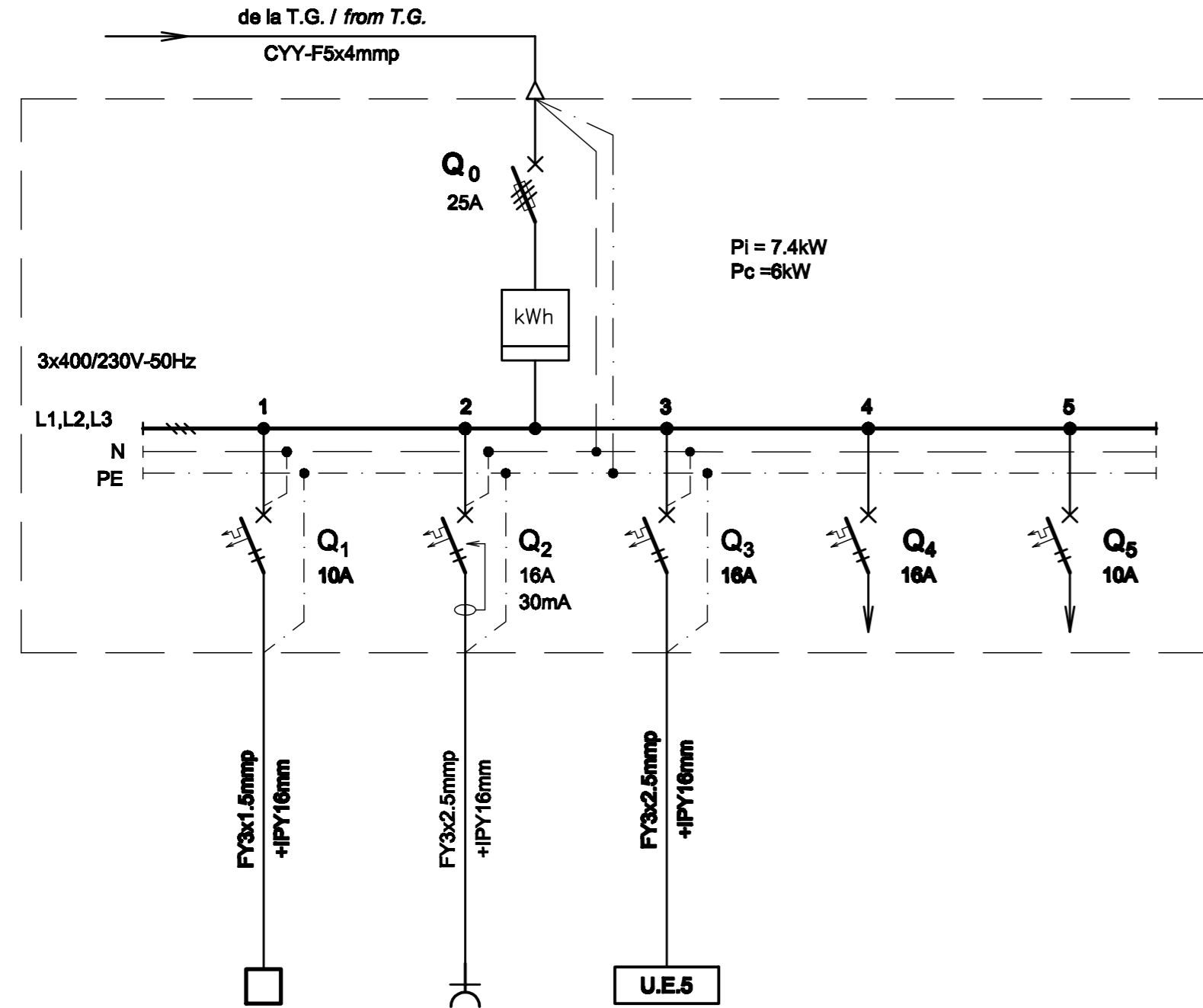


TABLOU ELECTRIC SPATIU COMERCIAL T Sp.com. - SCHEMA MONOFILARA
T Sp.com. COMMERCIAL AREA ELECTRIC BOARD - SINGLE-WIRE DIAGRAM



| Nr. circuit Circuit number | 1 | 2 | 3 | 4 | 5 |
|-------------------------------|--|---|---|--|--|
| PI [kW] | 0.4 | 2 | 2 | 2 | 1 |
| Destinatia Destination | SPATIU COMERCIAL COMMERCIAL AREA 4LL / Lamps | SPATIU COMERCIAL COMMERCIAL AREA 3LP / Sockets outlet | UNITATE EXTERIOARA DE CLIMATIZARE SISTEM MONOSPLIT OUTDOOR UNIT AIR CONDITIONING SYSTEM MONOSPLIT 1Bus. / Piece | REZERVA MONOFAZATA SINGLE-PHASE RESERVE | REZERVA MONOFAZATA SINGLE-PHASE RESERVE |

TABLOU ELECTRIC SPATIU COMERCIAL T Sp.com. - SPECIFICATIE DE APARATAJ
T Sp.com. COMMERCIAL AREA ELECTRIC BOARD - EQUIPMENT SPECIFICATION

| Nr. No. | Simbol Symbol | Denumirea aparatului Equipment denomination | Caracteristici tehnice Technical data | Buc. Pcs. | Observatii Remarks |
|---------|------------------|--|---|--------------|-----------------------|
| 0 | 1 | 2 | 3 | 4 | 5 |
| 1 | Q0 | Separator de sarcina tripolar cu fuzibil / Three-poles switch-disconnectors with fusible | In=25A Un=400V Uimp=8kV f=50Hz Icm=2,2kA | 1 | |
| 2 | Q1,Q5 | Intrerupator automat bipolar, curba B / Two-poles circuit breaker, curve B | In=10A Un=230V Icu=6kA f=50Hz | 2 | |
| 3 | Q2 | Intrerupator automat bipolar cu protectie la curent diferential rezidual, curba C / Two-poles circuit breaker with protection at residual differential current device, curve C | In=16A Un=230V Icu=6kA f=50Hz IΔn=0,03A Tip A Nivel de imunitate 250A la forma de unda 8/20 μS Level of immunity 250A to wave form 8/20 μS | 1 | |
| 4 | Q3,Q4 | Intrerupator automat bipolar, curba C / Two-poles circuit breaker, curve C | In=16A Un=230V Icu=6kA f=50Hz | 2 | |
| 5 | - | Contor trifazat de energie activa / Three-phase active energy counter | In=25A Un=400V Clasa I / Class I f=50Hz | 1 | |
| 6 | - | Cutie / Box | IP30, Class I / Class I | 1 | |

| Indice Index | Data Date | Modificare Modification/Revision | Proiectant Designer | Aprobat Consultant Approved Consultant | Aprobat CFR Approved CFR |
|-----------------|--------------|-------------------------------------|------------------------|---|-----------------------------|
| D | | | | | |
| C | | | | | |
| B | | | | | |
| A | | | | | |



| CONSULTANT / CONSULTANT | | | Data Date | Semnătură Signature |
|-------------------------|---|---------------|--------------|------------------------|
| Aprobat Approved | Șef proiect Project manager | R. Liuzza | 12.2011 | <i>[Signature]</i> |
| Aprobat Approved | Coordonator Secțiune 1 Section 1 Coordinator | C. Gambelli | 12.2011 | <i>[Signature]</i> |
| Verificat Checked | Expert Verificator Checking Expert | G. Fioravanti | 12.2011 | <i>[Signature]</i> |

| SUBCONTRACTANT / SUBCONTRACTOR | | | | |
|--------------------------------|--|-----------------------|---------|--------------------|
| Aprobat Approved | Responsabil Subconsultant Subconsultant Responsible | A.Stanciu - Dinulescu | 12.2011 | <i>[Signature]</i> |
| Întocmit Elaborated | Proiectant Designer | D. Matei | 12.2011 | <i>[Signature]</i> |

Reabilitarea liniei de cale ferata Braşov - Simeria, parte componentă a coridorului IV Pan European, pentru circulația trenurilor cu viteza maximă de 160 km/h,
Tronsonul : Braşov - Sighişoara
 Rehabilitation of the railway line Braşov - Simeria, component Part of the IV Pan-European Corridor, for the trains circulation with maximum speed of 160 km/h,
Section : Braşov - Sighişoara

Proiect/Project
 2004/RO/16/P/PA/003
 Faza / Phase:
 D.E. / E.D.

Denumire desen / Drawing Title :
**Tablou electric Spațiu comercial T Sp.com. - Stația Feldioara;
 Feldioara station - T Sp.com. commercial area electric board**

| Codificare / Codification System | Scara / Scale | LOT / LOT | Nr. / No 01 / 01 |
|---|---------------|-----------|---------------------|
| E A 5 1 0 1 E 0 7 B X I E 0 0 3 1 0 4 4 1 | | | |