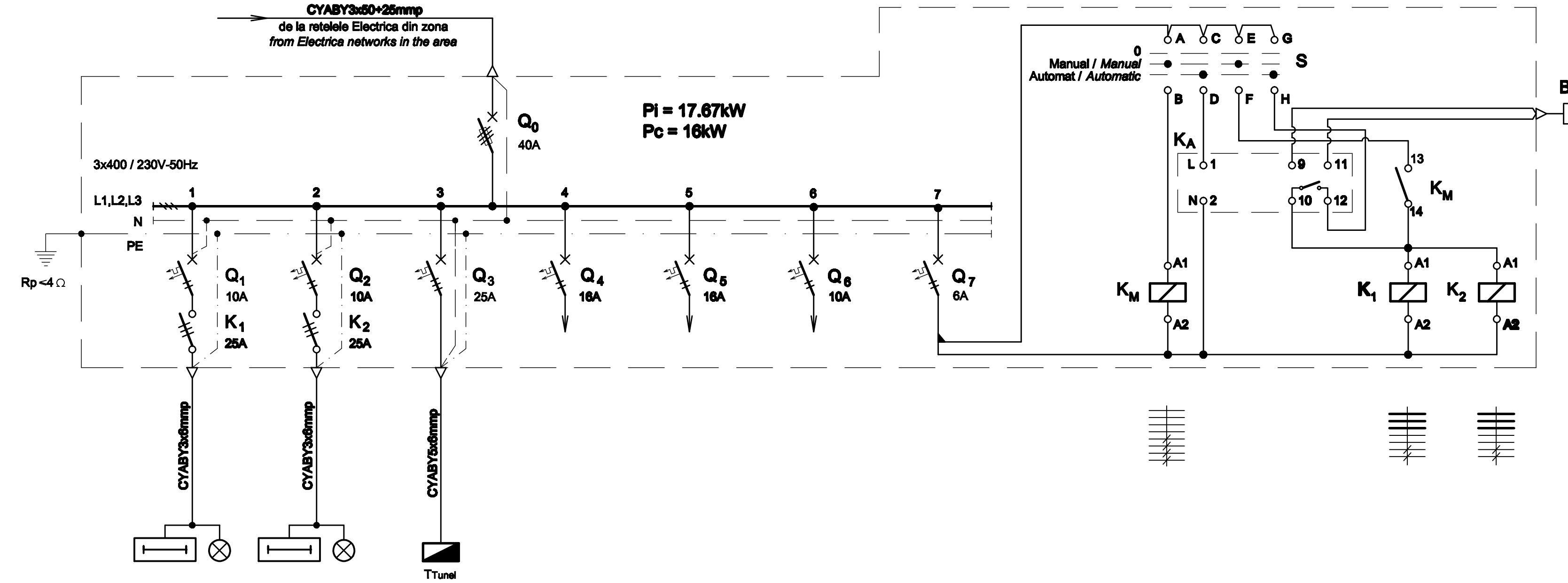


TABLOU ELECTRIC T.I.E. - SCHEMA MONOFILARA
T.I.E. ELECTRIC BOARD - SINGLE-WIRE DIAGRAM



Nr. circuit Circuit number	1	2	3	4	5	6	7
Pi [kW]	0.97	0.97	10.78	2	2	1	-
Destinația Destination	ILUMINAT PERON LINA II PLATFORM LIGHTING TRACK II 11LL + 1 pictograma 11 Lamps + 1 pictogram	ILUMINAT PERON LINA I PLATFORM LIGHTING TRACK I 11LL + 1 pictograma 11 Lamps + 1 pictogram	TUNEL PIETONAL TABLOU ELECTRIC - T Tunel PEDESTRIAN TUNNEL ELECTRIC BOARD - T Tunel	REZERVA MONOFAZATA PENTRU INSTALATI DE TELECOMUNICATI SINGLE-PHASE RESERVE FOR INSTALLATION OF TELECOMMUNICATIONS	REZERVA MONOFAZATA SINGLE-PHASE RESERVE	REZERVA MONOFAZATA SINGLE-PHASE RESERVE	CIRCUIT COMANDA ILUMINAT EXTERIOR COMMAND CIRCUIT OUTDOOR LIGHTING

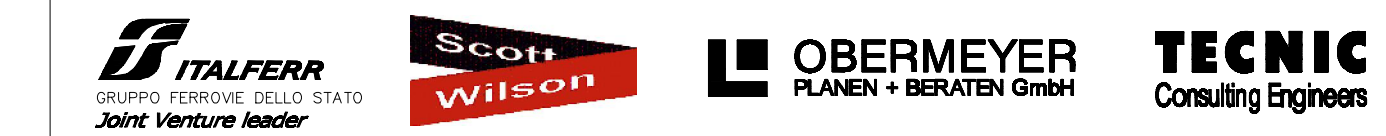
TABLOU ELECTRIC T.I.E. - SPECIFICATIE DE APARATAJ
T.I.E. ELECTRIC BOARD - EQUIPMENT SPECIFICATION

Nr. No.	Symbol	Denumirea aparaturii Equipment denomination	Caracteristici tehnice Technical data	Buc. Pos.	Observatii Remarks
0	1	2	3	4	5
1	Q0	Separator de sarcina tripolar cu fuzibil / Three-poles switch-disconnector with fuse	In=40A Un=400V Uimp=8kV f=50Hz Icm=2.2kA	1	
2	Q1,Q2,Q6	Înteruptor automat bipolar, curba B / Two-poles circuit breaker, curve B	In=10A Un=230V Icu=6kA f=50Hz	3	
3	Q3	Înteruptor automat tripolar, curba C / Three-poles circuit breaker, curve C	In=25A Un=400V Icu=6kA f=50Hz	1	
4	Q4,Q5	Înteruptor automat bipolar, curba C / Two-poles circuit breaker, curve C	In=16A Un=230V Icu=6kA f=50Hz	2	
5	Q7	Înteruptor automat bipolar, curba B / Two-poles circuit breaker, curve B	In=6A Un=230V Icu=6kA f=50Hz	1	
6	K1,K2	Contacteur electromagnetic tripolar de curent alternativ / Three-poles electromagnetic a.c. contactor	In=25A Un=400A Uc=230V f=50Hz	2	
7	KM	Contacteur de comanda / Controller	In=10A Uc=230V f=50Hz 4NO+4NC	1	
8	KA	Înteruptor crepuscular / Dusk-to-dawn switch	Un=230Vca In=10A E=2...60lx f=50Hz Tf=-25°C...+55°C	1	
8	-	Cutie / Box	Minim IP54, clasa I / Minimum IP54, class I	1	

D					
C					
B					
A					
Indice Index	Data Date	Modificare Modification/Revision	Proiectant Designer	Aprobat Consultant Approved Consultant	Aprobat CFR Approved CFR



CLIENT / CLIENT
C.N.C.F. "C.F.R." - S.A.



CONSULTANT / CONSULTANT			Data Date	Semnătură Signature
Aprobat Approved	Șef proiect Project manager	R. Liuzza	12.2011	<i>[Signature]</i>
Aprobat Approved	Coordonator Secțiune 1 Section 1 Coordinator	C. Gambelli	12.2011	<i>[Signature]</i>
Verificat Checked	Expert Verificator Checking Expert	G. Fioravanti	12.2011	<i>[Signature]</i>

SUBCONTRACTANT / SUBCONTRACTOR				
Aprobat Approved	Responsabil Subconsultant Subconsultant Responsible	A. Stanciu - Dinulescu	12.2011	<i>[Signature]</i>
Intocmit Elaborated	Proiectant Designer	D. Matei	12.2011	<i>[Signature]</i>

Reabilitarea liniei de cale ferata Brașov - Simeria, parte componentă a coridorului IV Pan European, pentru circulația trenurilor cu viteză maximă de 160 km/h,
Tronsonul : Brașov - Sighișoara
 Rehabilitation of the railway line Brașov - Simeria, component Part of the IV Pan-European Corridor, for the trains circulation with maximum speed of 160 km/h,
Section : Brașov - Sighișoara

Denumire desen / Drawing Title :
**Tablou electric T.I.E. - Halta Rotbav;
 Rotbav flag station - T.I.E. electric board**

Codificare / Codification System	Scara / Scale	LOT / LOT	Nr. / No 01 / 01
E A 5 1	0 1	E 0 8	B X I E 0 0 3 1 0 1 2 2