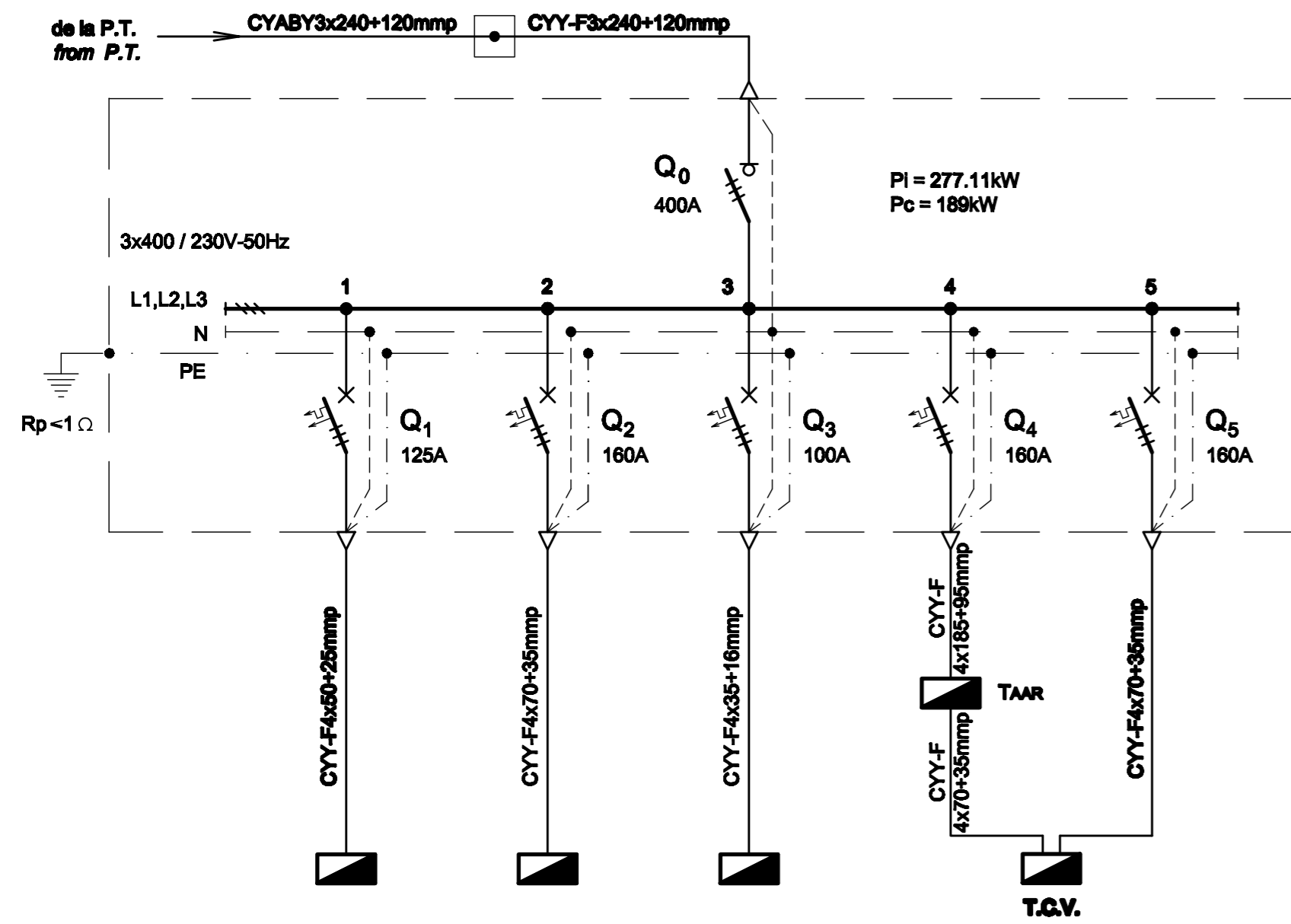


**TABLOU ELECTRIC T.G.D.j.t. - SCHEMA MONOFILARA**  
**T.G.D.j.t. ELECTRIC BOARD - SINGLE-WIRE DIAGRAM**



Nr. circuit Circuit number	1	2	3	4
PI [kW]	65.23	72.37	54.25	85.26
Destinația Destination	TABLOU ELECTRIC GENERAL - T.G. GENERAL ELECTRIC BOARD - T.G.	TABLOU ELECTRIC - T.I.E. ELECTRIC BOARD - T.I.E.	TABLOU ELECTRIC - T.C.V.1 ELECTRIC BOARD - T.C.V.1	TABLOU ELECTRIC - T.C.V. ELECTRIC BOARD - T.C.V.

**TABLOU ELECTRIC T.G.D.j.t. - SPECIFICATIE DE APARATAJ**  
**T.G.D.j.t. ELECTRIC BOARD - EQUIPMENT SPECIFICATION**

Nr. No.	Symbol Symbol	Denumirea aparaturii Equipment denomination	Caracteristici tehnice Technical data	Buc. Pos.	Observatii Remarks
0	1	2	3	4	5
1	Q0	Separator de sarcina tripolar Three-poles switch-disconnector	In=400A Un=400V Uimp=8kV f=50Hz Icm=2.2kA	1	
2	Q1	Intreupator automat tripolar, curba C Three-poles circuit breaker, curve C	In=125A Un=400V Icu=8kA f=50Hz	1	
3	Q2,Q4,Q5	Intreupator automat tripolar, curba C Three-poles circuit breaker, curve C	In=160A Un=400V Icu=8kA f=50Hz	3	
4	Q3	Intreupator automat tripolar, curba C Three-poles circuit breaker, curve C	In=100A Un=400V Icu=8kA f=50Hz	1	
5	-	Cutie / Box	IP54, Clasa I / Class I	1	

D					
C					
B					
A					
Indice Index	Data Date	Modificare Modification/Revision	Proiectant Designer	Aprobat Consultant Approved Consultant	Aprobat CFR Approved CFR



CONSULTANT / CONSULTANT		Data Date	Semnătură Signature
Aprobat Approved	Șef proiect Project manager	R. Liuzza	12.2011
Aprobat Approved	Coordonator Secțiune 1 Section 1 Coordinator	C. Gambelli	12.2011
Verificat Checked	Expert Verificator Checking Expert	G. Fioravanti	12.2011

SUBCONTRACTANT / SUBCONTRACTOR		Data Date	Semnătură Signature
Aprobat Approved	Responsabil Subconsultant Subconsultant Responsible	A. Stanciu - Dinulescu	12.2011
Înlocuit Elaborated	Proiectant Designer	D. Matei	12.2011

Reabilitarea liniei de cale ferata Brașov - Simeria, parte componentă a a coridorului IV Pan European, pentru circulația trenurilor cu viteza maximă de 160 km/h,  
 Tronsonul : Brașov - Sighișoara  
 Rehabilitation of the railway line Brașov - Simeria, component Part of the IV Pan-European Corridor, for the trains circulation with maximum speed of 160 km/h,  
 Section : Brașov - Sighișoara

Denumire desen / Drawing Title :  
**Tablou electric T.G.D.j.t. - Stația Apața;  
 Apata station - T.G.D.j.t. electric board**

Codificare / Codification System	Scara / Scale	LOT / LOT	Nr. / No 01 / 01
E A 5 1 0 1 E 0 9 B X I E 0 0 3 1 0 4 8 1			