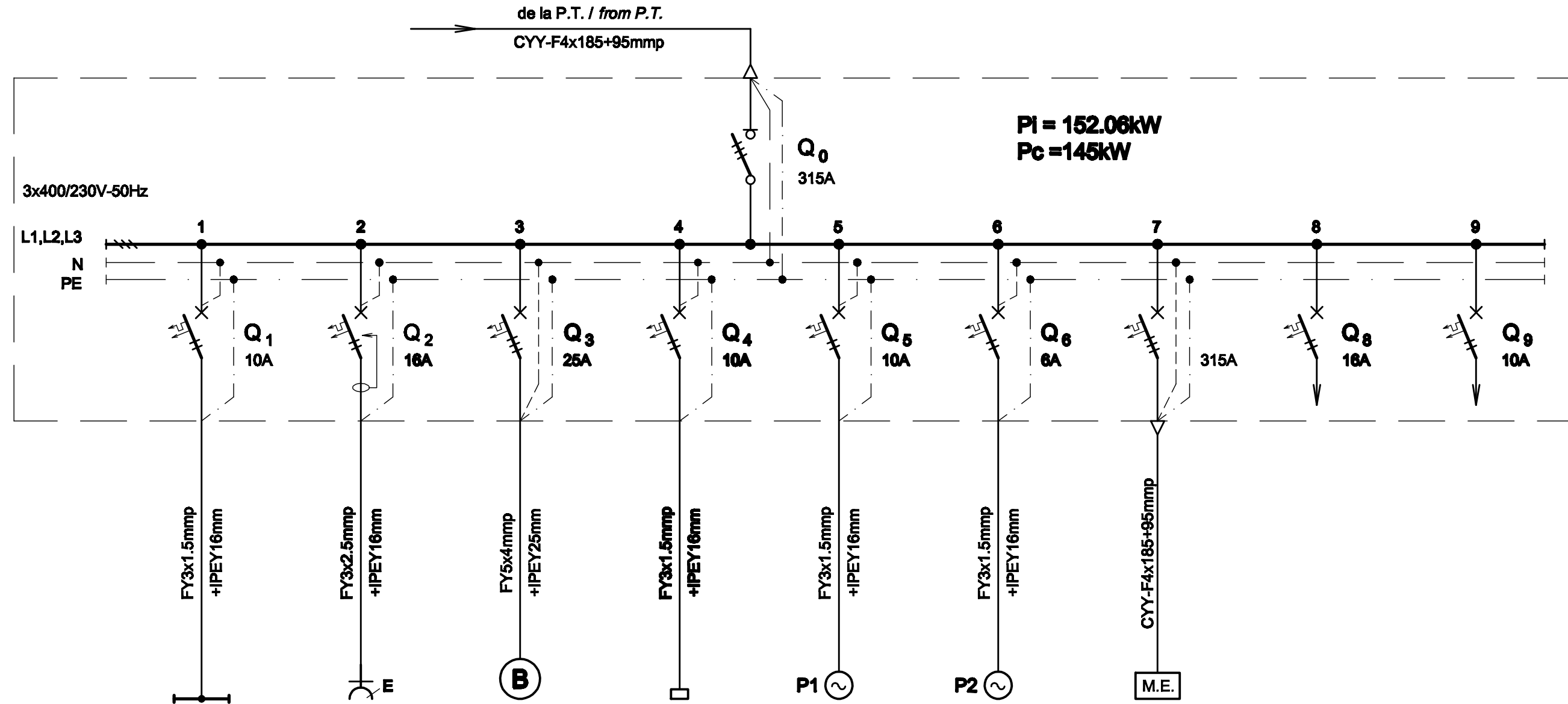


TABLOU ELECTRIC CENTRALA TERMICA T c.T. - SCHEMA MONOFILARA  
T c.T. THERMAL STATION ELECTRIC BOARD - SINGLE-WIRE DIAGRAM



Nr. circuit Circuit number	1	2	3	4	5	6	7	8	9
PI [kW]	0.46	2	9	1	1.2	0.4	135	2	1
Destinatia Destination	CENTRALA TERMICA SI HIDROFOR THERMAL STATION, BOILER & HYDROFORE 5LL / Lamps	CENTRALA TERMICA SI HIDROFOR THERMAL STATION, BOILER & HYDROFORE 2LP / Sockets outlet	BOILER ELECTRIC ELECTRIC BOILER	STATIE COMPLETA DE AUTOMATIZARE PENTRU SISTEME SOLARE COMPLETE AUTOMATION STATION FOR SOLAR SYSTEMS	POMPA PENTRU HIDROFOR PUMP FOR HYDROFORE	POMPA CIRCULATIE AGENT TERMIC PENTRU INCALZIRE HEAT CARRIER CIRCULATION PUMP FOR HEATINGA	MICROCENTRALA ELECTRICA PENTRU INCALZIRE MICRO ELECTRIC BOILING FOR HEATING	REZERVA MONOFAZATA SINGLE-PHASE RESERVE	REZERVA MONOFAZATA SINGLE-PHASE RESERVE

TABLOU ELECTRIC CENTRALA TERMICA T c.T. - SPECIFICATIE DE APARATAJ  
T c.T. THERMAL STATION ELECTRIC BOARD - EQUIPMENT SPECIFICATION

Nr. No.	Symbol	Denumirea aparatului Equipment denomination	Caracteristici tehnice Technical data	Buc. Pcs.	Observatii Remarks
0	1	2	3	4	5
1	Q0	Separator de sarcina tripolar Three-poles switch-disconnector	In=315A Un=400V Uimp=8kV f=50Hz Icm=2.2kA	1	
2	Q1	Intrerupator automat bipolar, curba B Two-poles circuit breaker, curve B	In=10A Un=230V Icu=6kA f=50Hz	1	
3	Q2	Intrerupator automat bipolar cu protectie la curent diferential rezidual, curba C / Two-poles circuit breaker with protection at residual differential current device, curve C	In=16A Un=230V Icu=6kA f=50Hz ΔIn=0,03A Tip A Nivel de imunitate 250A la forma de unda 8/20 μS Level of immunity 250A to wave form 8/20 μS	1	
4	Q3	Intrerupator automat tripolar, curba C Three-poles circuit breaker, curve C	In=25A Un=400V Icu=6kA f=50Hz	1	
5	Q6	Intrerupator automat bipolar, curba C Two-poles circuit breaker, curve C	In=6A Un=230V Icu=6kA f=50Hz	1	
6	Q8	Intrerupator automat bipolar, curba C Two-poles circuit breaker, curve C	In=16A Un=230V Icu=6kA f=50Hz	1	
7	Q4,Q5,Q9	Intrerupator automat bipolar, curba C Two-poles circuit breaker, curve C	In=10A Un=230V Icu=6kA f=50Hz	3	
8	Q7	Intrerupator automat tripolar, curba C Three-poles circuit breaker, curve C	In=250A Un=400V Icu=6kA f=50Hz	1	
9	-	Cutie / Box	IP54, Class I / Class I	1	

D					
C					
B					
A					
Indice Index	Data Date	Modificare Modification/Revision	Proiectant Designer	Aprobat Consultant Approved Consultant	Aprobat CFR Approved CFR



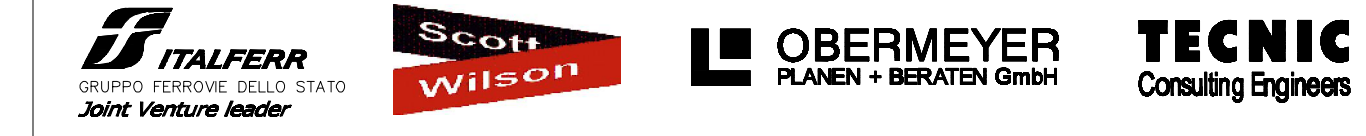
GUVERNUL ROMANIEI  
ROMANIAN GOVERNMENT

PROIECT FINANȚAT DE UNIUNEA EUROPEANĂ  
EUROPEAN UNION FINANCED PROJECT

CFR

C.N.C.F. "C.F.R." - S.A.

CLIENT / CLIENT



CONSULTANT / CONSULTANT			Data Date	Semnătură Signature
Aprobat Approved	Șef proiect Project manager	R. Liuzza	12.2011	<i>[Signature]</i>
Aprobat Approved	Coordonator Secțiune 1 Section 1 Coordinator	C. Gambelli	12.2011	<i>[Signature]</i>
Verificat Checked	Expert Verificator Checking Expert	G. Fioravanti	12.2011	<i>[Signature]</i>

SUBCONTRACTANT / SUBCONTRACTOR			Data Date	Semnătură Signature
Aprobat Approved	Responsabil Subconsultant Subconsultant Responsible	A.Stanciu - Dinulescu	12.2011	<i>[Signature]</i>
Întocmit Elaborated	Proiectant Designer	D. Matei	12.2011	<i>[Signature]</i>

Reabilitarea liniei de cale ferata Braşov - Simeria, parte componentă a coridorului IV Pan European, pentru circulația trenurilor cu viteză maximă de 160 km/h,  
Tronsonul : Braşov - Sighişoara

Rehabilitation of the railway line Braşov - Simeria, component Part of the IV Pan-European Corridor, for the trains circulation with maximum speed of 160 km/h,  
Section : Braşov - Sighişoara

Project/Project  
2004/RO/16/P/PA/003

Faza / Phase:  
D.E. / E.D.

Denumire desen / Drawing Title :

Tablou electric centrala termica T c.T. - Stația Racos;  
Racos station - Tc.T. thermal station electric board

Codificare / Codification System	Scara / Scale	LOT / LOT	Nr. / No 01 / 01
E A 5 1 0 1 E 1 1 B X I E 0 0 3 1 0 4 2 1			