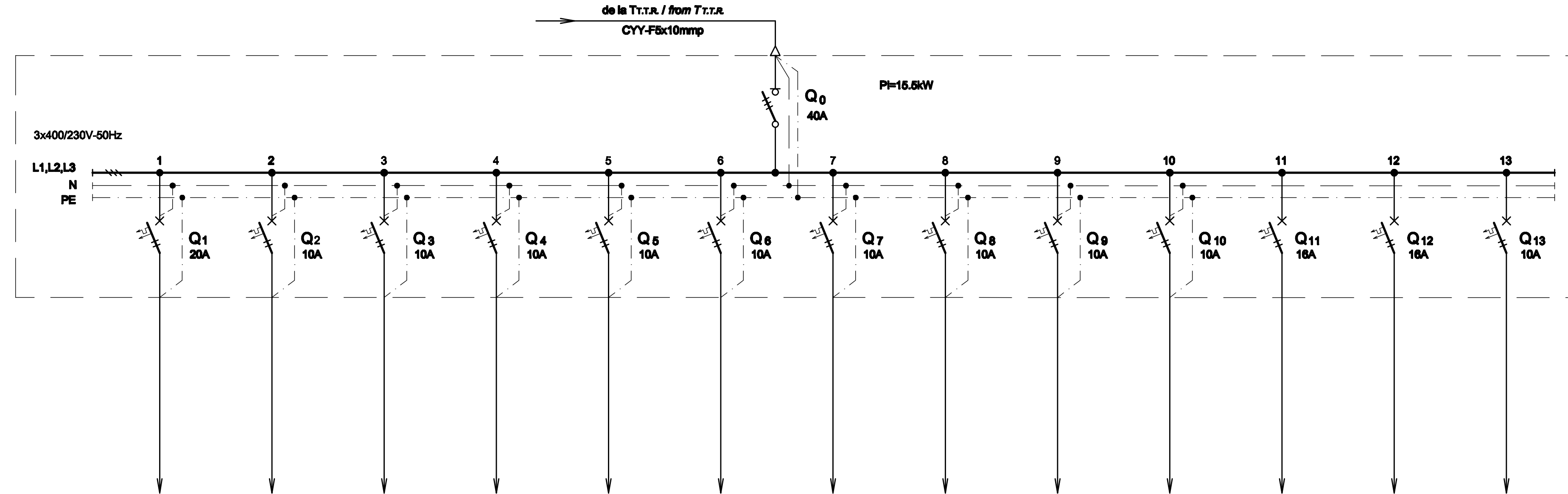


TABLOU ELECTRIC T Echipamente - SCHEMA MONOFILARA
T Echipamente ELECTRIC BOARD - SINGLE-WIRE DIAGRAM



Nr. circuit Circuit number	1	2	3	4	5	6	7	8	9	10	11	12	13
PI [kW]	3	0.9	0.9	0.74	0.74	0.74	0.74	0.74	1	1	2	2	1
Destinatia Destination	UPS (SERVER+ CONSOLA OAM LA TTR) UPS (SERVER+ CONSOLA OAM FOR TTR) 1Buc. / Pieces	PANOU AFISARE INTERIOR INDOOR DISPLAY PANEL 2Buc. / Pieces	PANOU AFISARE INTERIOR INDOOR DISPLAY PANEL 2Buc. / Pieces	PANOU AFISARE PERON CU DOUA FETE SI CEAS TWO-SIDED AND CLOCK DISPLAY PANEL ON PLATFORM 2Buc. / Pieces	PANOU AFISARE PERON CU DOUA FETE SI CEAS TWO-SIDED AND CLOCK DISPLAY PANEL ON PLATFORM 2Buc. / Pieces	PANOU AFISARE PERON CU DOUA FETE SI CEAS TWO-SIDED AND CLOCK DISPLAY PANEL ON PLATFORM 2Buc. / Pieces	PANOU AFISARE PERON CU DOUA FETE SI CEAS TWO-SIDED AND CLOCK DISPLAY PANEL ON PLATFORM 2Buc. / Pieces	PANOU AFISARE PERON CU DOUA FETE SI CEAS TWO-SIDED AND CLOCK DISPLAY PANEL ON PLATFORM 2Buc. / Pieces	CABINET CABLARE STRUCTURATA CABINET FOR STRUCTURE WIRING 1Buc. / Piece	ECHIPAMENTE DIVERSE MISCELLANEOUS EQUIPMENT 1Buc. / Piece	REZERVA MONOFAZATA SINGLE-PHASE RESERVE	REZERVA MONOFAZATA SINGLE-PHASE RESERVE	REZERVA MONOFAZATA SINGLE-PHASE RESERVE

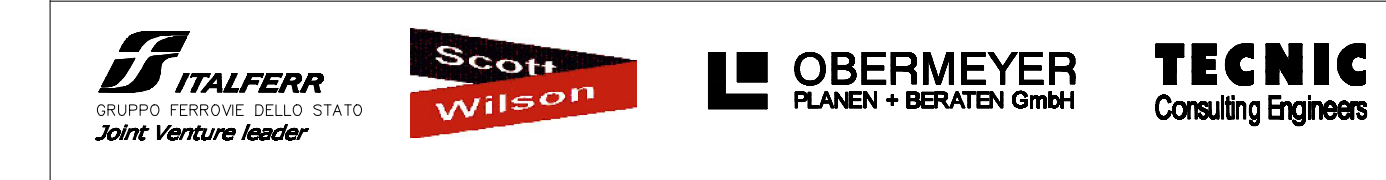
TABLOU ELECTRIC T Echipamente - SPECIFICATIE DE APARATAJ
T Echipamente ELECTRIC BOARD - EQUIPMENT SPECIFICATION

Nr. No.	Symbol	Denumirea aparatului Equipment denomination	Caracteristici tehnice Technical data	Buc. Pos.	Observatii Remarks
0	1	2	3	4	5
1	Q0	Separator de sarcina tripolar Three-poles switch-disconnector	In=40A Un=400V Uimp=8kV f=50Hz Icm=2,2kA	1	
2	Q1	Intreupator automat bipolar, curba C Two-poles circuit breaker, curve C	In=20A Un=230V Icu=8kA f=50Hz	1	
3	Q2,...,Q10,Q13	Intreupator automat bipolar, curba C Two-poles circuit breaker, curve C	In=10A Un=230V Icu=8kA f=50Hz	10	
4	Q11,Q12	Intreupator automat bipolar, curba C Two-poles circuit breaker, curve C	In=16A Un=230V Icu=8kA f=50Hz	2	
5	-	Cutie / Box	IP30, Clasa I / Class I	1	

D					
C					
B					
A					
Indice Index	Data Date	Modificarea Modification/Revision	Proiectant Designer	Aprobat Consultant Approved Consultant	Aprobat CFR Approved CFR



CLIENT / CLIENT
C.N.C.F. "C.F.R." - S.A.



CONSULTANT / CONSULTANT

Aprobat Approved	Sef proiect Project manager	R. Liuzza	Data Date	Semnatura Signature
Aprobat Approved	Coordonator Sectiune 1 Section 1 Coordinator	C. Gambelli	12.2011	<i>[Signature]</i>
Verificat Checked	Expert Verificator Checking Expert	G. Fioravanti	12.2011	<i>[Signature]</i>

SUBCONTRACTANT / SUBCONTRACTOR

Aprobat Approved	Responsabil Subconsultant Subconsultant Responsible	A.Stanciu - Dinulescu	12.2011	<i>[Signature]</i>
Intocmit Elaborated	Proiectant Designer	D.Matei	12.2011	<i>[Signature]</i>

Reabilitarea liniei de cale ferata Braşov - Simeria, parte componentă a coridorului IV Pan European, pentru circulația trenurilor cu viteză maximă de 160 km/h,
Tronsonul : Braşov - Sighişoara
 Rehabilitation of the railway line Braşov - Simeria, component Part of the IV Pan-European Corridor, for the trains circulation with maximum speed of 160 km/h,
Section : Braşov - Sighişoara

Denumire desen / Drawing Title :
**Tablou electric T Echipamente - Stația Racog;
 Racos station - T Echipamente electric board**

Codificare / Codification System	Scara / Scale	LOT / LOT	Nr. / No 01 / 01
E A 5 1 0 1 E 1 1 B X I E 0 0 3 1 0 5 0 1			