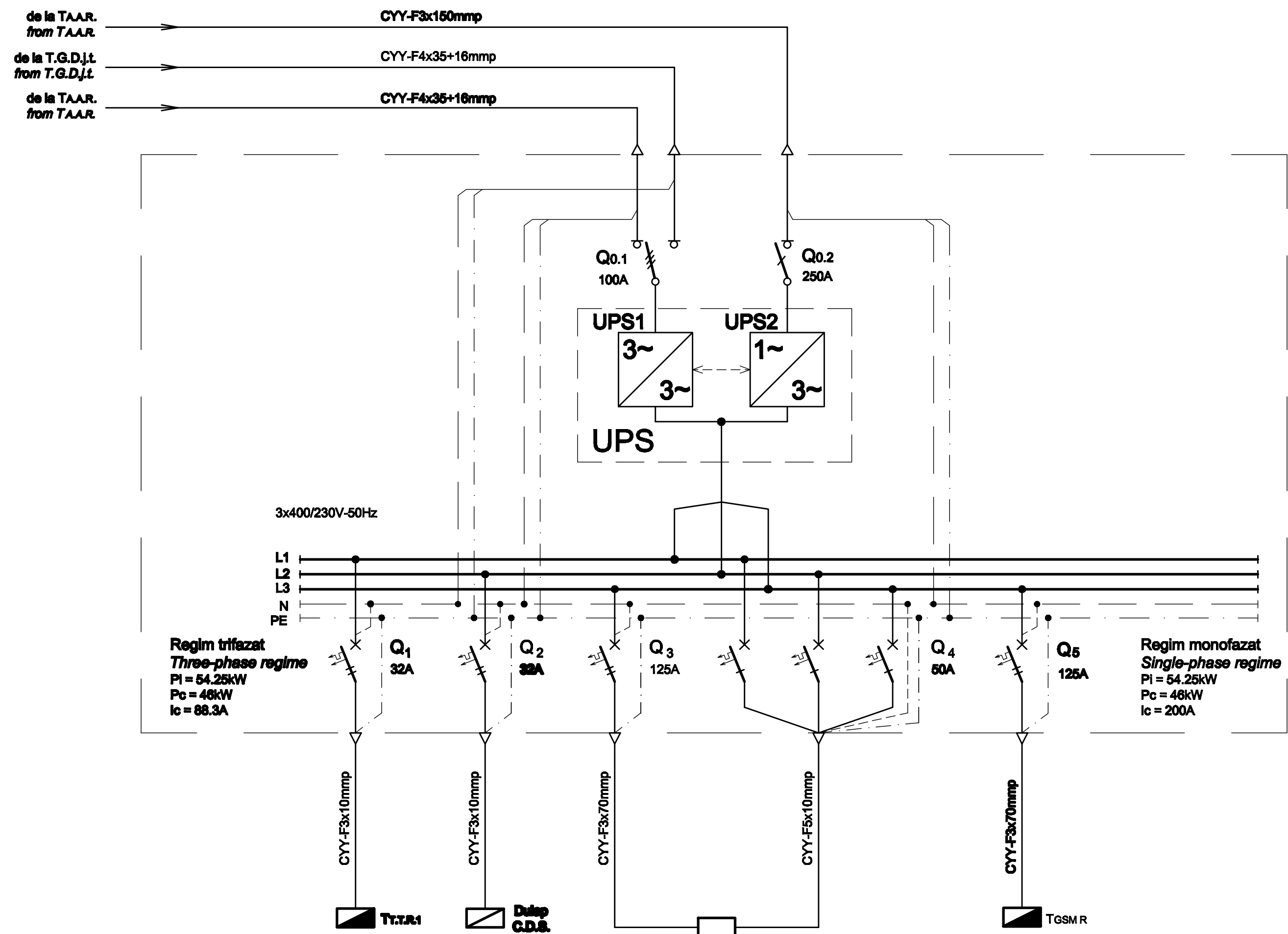


TABLEAU ELECTRIC T.C.V.1 - SCHEMA MONOFILARA
T.C.V.1 ELECTRIC BOARD - SINGLE-WIRE DIAGRAM



Nr. circuit Circuit number	1	2	3	4
PI [kW]	4.75	5	23	21.5
Destinația Destination	TABL. ELECTRIC - T.T.T.R.1 ELECTRIC BOARD - T.T.T.R.1	DULAP C.D.S. C.D.S. CLOSET	ALIMENTARE REDRESOR MONOFAZAT C.E. 230V / TRIFAZAT C.E. 400V CE 230V SINGLE-PHASED / CE 400V THREE-PHASED RECTIFIER SUPPLY	TABL. ELECTRIC T. G.S.M.R. ELECTRIC BOARD

TABLEAU ELECTRIC T.C.V.1 - SPECIFICATIE DE APARATAJ
T.C.V.1 ELECTRIC BOARD - EQUIPMENT SPECIFICATION

Nr. No.	Symbol	Denumirea aparatului Equipment denomination	Caracteristici tehnice Technical data	Buc. Pos.	Observatii Remarks
0	1	2	3	4	5
1	Q0.1	Comutator cu carne tripolar cu doua pozitii, 1-2 Three-poles cam switch with two positions, 1-2	In=100A Un=400V f=50Hz	Uimp=6kV 3P Pos. 1-2	1
2	Q0.2	Separator de sarcina monopolar Single-pole switch-disconnectors	In=250A Un=400V f=50Hz	Uimp=6kV 1P Pos. 0-1	1
3	Q1,Q2	Intrerupator automat bipolar, curba C Two-poles circuit breaker, curve C	In=32A Un=230V Icu=6kA f=50Hz		2
4	Q3,Q5	Intrerupator automat bipolar, curba C Two-poles circuit breaker, curve C	In=125A Un=230V Icu=6kA f=50Hz		2
5	Q4	Intrerupator automat tripolar, curba C Three-poles circuit breaker, curve C	In=50A Un=400V Icu=6kA f=50Hz		1
6	-	Cutie / Box	IP30, Clasa I / Class I		1

D					
C					
B					
A					
Indice Index	Data Date	Modificarea Modification/Revision	Proiectant Designer	Aprobat Consultant Approved Consultant	Aprobat CFR Approved CFR
GUVERNUL ROMANIEI ROMANIAN GOVERNMENT		PROIECT FINANȚAT DE UNIUNEA EUROPEANĂ EUROPEAN UNION FINANCED PROJECT			
CLIENT / CLIENT		C.N.C.F. "C.F.R." - S.A.			
GRUPPO FERROVIE DELLO STATO Joint Venture leader				FLANEN + BERATEN GmbH	
Consulting Engineers					
CONSULTANT / CONSULTANT					
Aprobat Approved	Șef proiect Project manager	R. Liuzza	12.2011	Semnătură Signature	
Aprobat Approved	Coordonator Secțiune 1 Section 1 Coordinator	C. Gambelli	12.2011		
Verificat Checked	Expert Verificator Checking Expert	G. Fioravanti	12.2011		
SUBCONTRACTANT / SUBCONTRACTOR					
Aprobat Approved	Responsabil Subconsultant Subconsultant Responsible	A. Stanciu - Dinulescu	12.2011		
Intocmit Elaborated	Proiectant Designer	D. Matei	12.2011		
Reabilitarea liniei de cale ferată Brașov - Simeria, parte componentă a coridorului IV Pan European, pentru circulația trenurilor cu viteză maximă de 160 km/h, Tronsonul : Brașov - Sighișoara Rehabilitation of the railway line Brașov - Simeria, component Part of the IV Pan-European Corridor, for the trains circulation with maximum speed of 160 km/h, Section : Brașov - Sighișoara					
Denumire desen / Drawing Title : Tablou electric T.C.V.1 - Stația Racog; Racos station - T.C.V.1 electric board					
Codificare / Codification System		Scara / Scale	LOT / LOT	Nr. / No 01 / 01	
E A 5 1		0 1	E 1 1	B X I E 0 0 3 1 0 4 9 1	