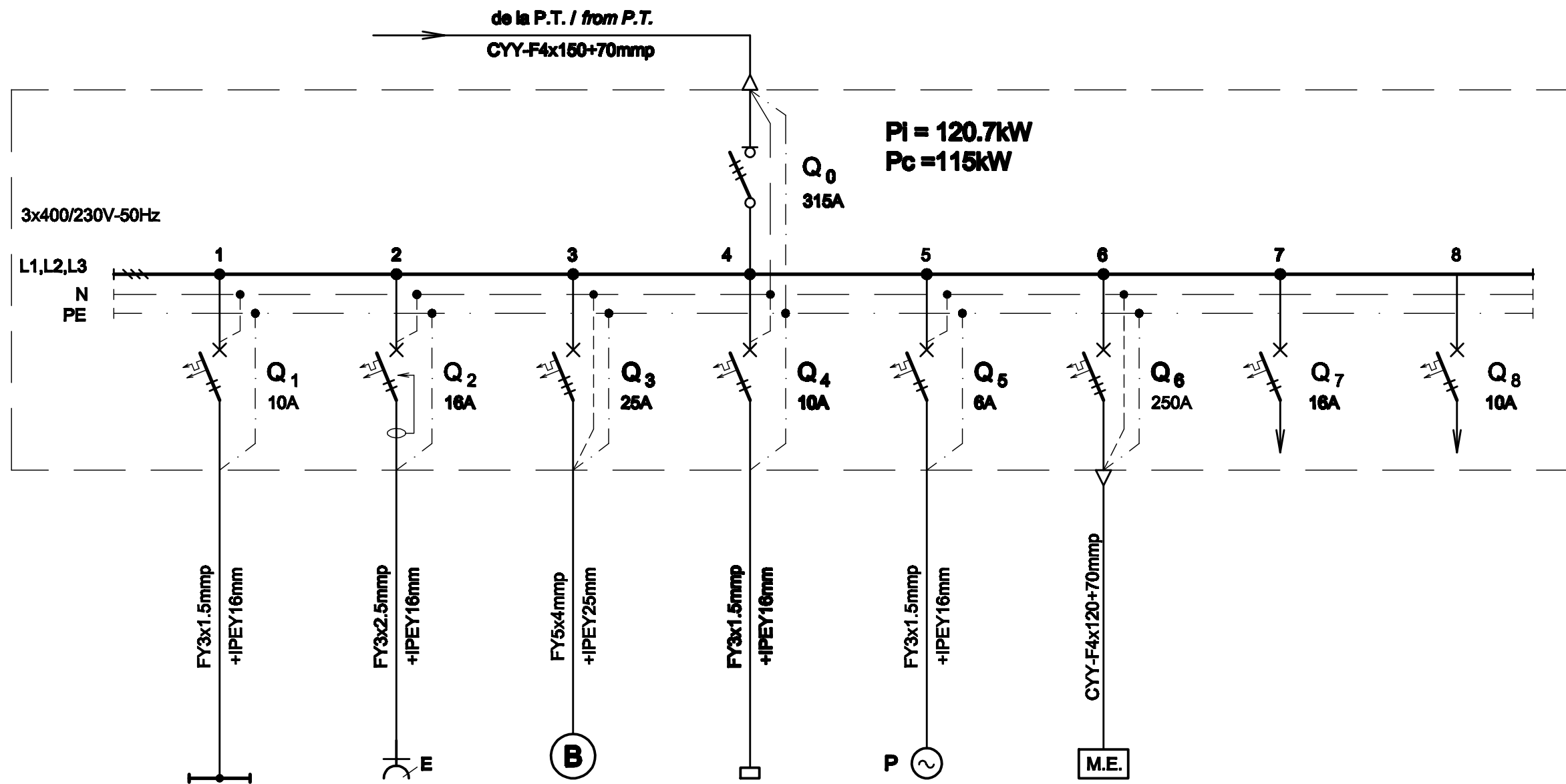


TABLOU ELECTRIC CENTRALA TERMICA T c.T. - SCHEMA MONOFILARA
Tc.T. THERMAL STATION ELECTRIC BOARD - SINGLE-WIRE DIAGRAM



Nr. circuit Circuit number	1	2	3	4	5	6	7	8
PI [kW]	0.4	2	9	1	0.3	105	2	1
Destinatia Destination	CENTRALA TERMICA SI HIDROFOR THERMAL STATION, BOILER & HYDROFORE 4LL / Lamps	CENTRALA TERMICA SI HIDROFOR THERMAL STATION, BOILER & HYDROFORE 2LP / Sockets outlet	BOILER ELECTRIC ELECTRIC BOILER	STATIE COMPLETA DE AUTOMATIZARE PENTRU SISTEME SOLARE COMPLETE AUTOMATION STATION FOR SOLAR SYSTEMS	POMPA CIRCULATIE AGENT TERMIC PENTRU INCALZIRE HEAT CARRIER CIRCULATION PUMP FOR HEATING	MICROCENTRALA ELECTRICA PENTRU INCALZIRE MICRO ELECTRIC BOILING FOR HEATING	REZERVA MONOFAZATA SINGLE-PHASE RESERVE	REZERVA MONOFAZATA SINGLE-PHASE RESERVE

TABLOU ELECTRIC CENTRALA TERMICA T c.T. - SPECIFICATIE DE APARATAJ
Tc.T. THERMAL STATION ELECTRIC BOARD - EQUIPMENT SPECIFICATION

Nr. No.	Symbol	Denumirea aparatului Equipment denomination	Caracteristici tehnice Technical data	Buc. Pcs.	Observatii Remarks
0	1	2	3	4	5
1	Q0	Separator de sarcina tripolar Three-poles switch-disconnector	In=315A Un=400V Uimp=8kV f=50Hz Icm=2.2kA	1	
2	Q1	Intrerupator automat bipolar, curba B Two-poles circuit breaker, curve B	In=10A Un=230V Icu=6kA f=50Hz	1	
3	Q2	Intrerupator automat bipolar cu protectie la curent diferential rezidual, curba C / Two-poles circuit breaker with protection at residual differential current device, curve C	In=16A Un=230V Icu=6kA f=50Hz IΔn=0,03A Tip A Nivel de imunitate 250A la forma de unda 8/20 μS Level of immunity 250A to wave form 8/20 μS	1	
4	Q3	Intrerupator automat tripolar, curba C Three-poles circuit breaker, curve C	In=25A Un=400V Icu=6kA f=50Hz	1	
5	Q5	Intrerupator automat bipolar, curba C Two-poles circuit breaker, curve C	In=6A Un=230V Icu=6kA f=50Hz	1	
6	Q6	Intrerupator automat tripolar, curba C Three-poles circuit breaker, curve C	In=250A Un=400V Icu=6kA f=50Hz	1	
7	Q7	Intrerupator automat bipolar, curba C Two-poles circuit breaker, curve C	In=16A Un=230V Icu=6kA f=50Hz	1	
8	Q4, Q8	Intrerupator automat bipolar, curba C Two-poles circuit breaker, curve C	In=10A Un=230V Icu=6kA f=50Hz	2	
9	-	Cutie / Box	IP54, Class I / Class I	1	

D					
C					
B					
A					
Indice Index	Data Date	Modificare Modification/Revision	Proiectant Designer	Aprobat Consultant Approved Consultant	Aprobat CFR Approved CFR
				GUVERNUL ROMANIEI ROMANIAN GOVERNMENT	
		PROIECT FINANȚAT DE UNIUNEA EUROPEANĂ EUROPEAN UNION FINANCED PROJECT			
				C.N.C.F. "C.F.R." - S.A.	
CLIENT / CLIENT					
GRUPPO FERROVIE DELLO STATO Joint Venture leader		PLANEN + BERATEN GmbH		TECNIC Consulting Engineers	
CONSULTANT / CONSULTANT				Data Date	Semnătură Signature
Aprobat Approved	Șef proiect Project manager	R. Liuzza		12.2011	
Aprobat Approved	Coordonator Secțiune 1 Section 1 Coordinator	C. Gambelli		12.2011	
Verificat Checked	Expert Verificator Checking Expert	G. Fioravanti		12.2011	
SUBCONTRACTANT / SUBCONTRACTOR					
Aprobat Approved	Responsabil Subconsultant Subconsultant Responsible	A.Stanciu - Dinulescu		12.2011	
Întocmit Elaborated	Proiectant Designer	D. Matei		12.2011	
Reabilitarea liniei de cale ferata Braşov - Simeria, parte componentă a coridorului IV Pan European, pentru circulația trenurilor cu viteză maximă de 160 km/h, Tronsonul : Braşov - Sighişoara Rehabilitation of the railway line Braşov - Simeria, component Part of the IV Pan-European Corridor, for the trains circulation with maximum speed of 160 km/h, Section : Braşov - Sighişoara					
Denumire desen / Drawing Title : Tablou electric centrala termica T c.T. - Stația Cața Cata station - Tc.t. thermal station electric board					
Codificare / Codification System		Scara / Scale	LOT / LOT	Nr. / No 01 / 01	
E A 5 1		0 1	E	1 3	B X I E 0 0 3 1 0 4 2 1