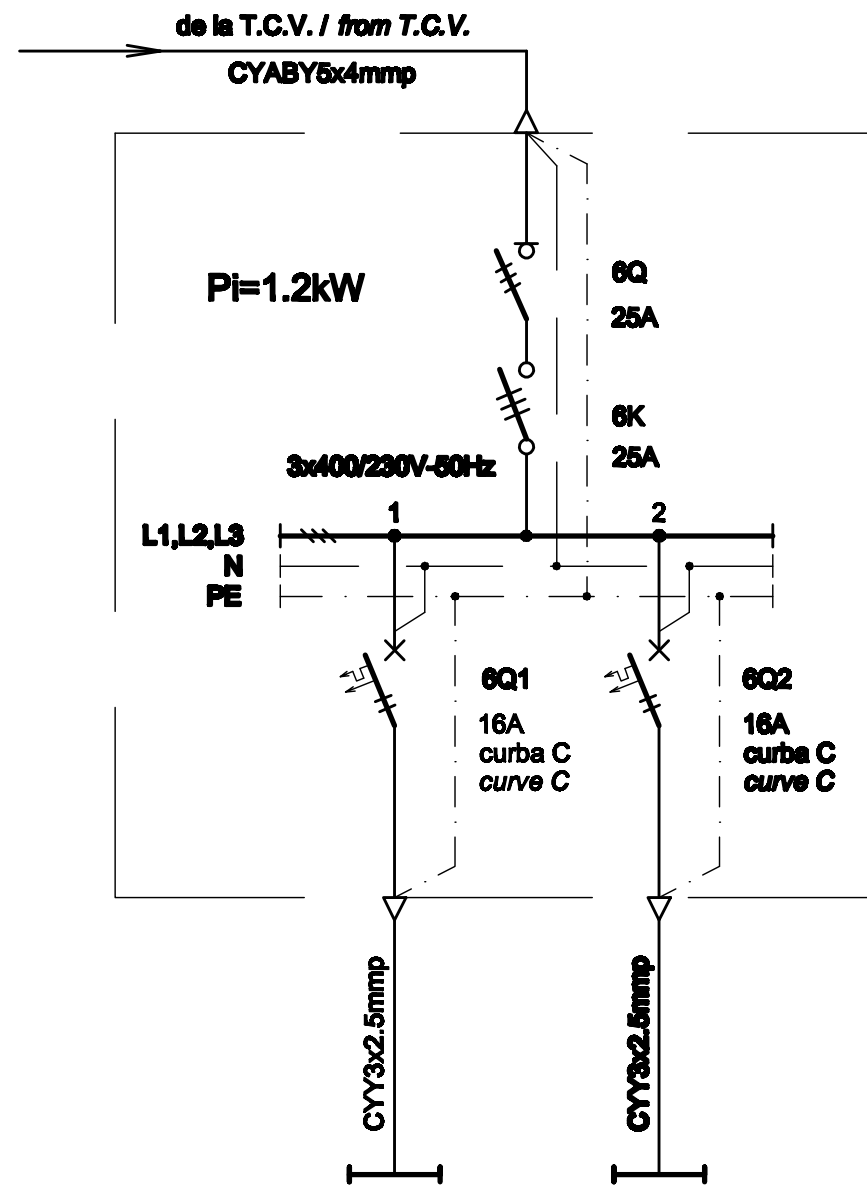


CUTIE ETANSA PENTRU COPERTINA CV3 - SCHEMA MONOFILARA
CV3 SEALED BOX FOR CANOPY - SINGLE-WIRE DIAGRAM



Nr. circuit	1	2
P _{max}	0.6	0.6
Destinatia Destination	ILUMINAT PERON PLATFORM LIGHTING 12LL / Lamps	ILUMINAT PERON PLATFORM LIGHTING 12LL / Lamps

CUTIE ETANSA PENTRU COPERTINA CV3 - SPECIFICATIE DE APARATAJ
CV3 SEALED BOX FOR CANOPY - EQUIPMENT SPECIFICATION

Nr. No.	Symbol Symbol	Denumirea aparatului Equipment denomination	Caracteristici tehnice Technical data	Buc. Pos.	Observatii Remarks
0	1	2	3	4	5
1	6Q	Separator de sarcina tripolar Three-poles switch-disconnector	In=25A Un=400V Uimp=8kV f=50Hz Iom=2.2kA	1	
2	6Q1,6Q2	Intreupator automat bipolar, curba C Two-poles circuit breaker, curve C	In=16A Un=250V Icu=6kA f=50Hz	2	
3	6K	Contactor electromagnetic tripolar de curent alternativ / Three-poles electromagnetic a.c. contactor	In=25A Un=400A Uc=230V f=50Hz	1	
4	-	Cutie / Box	IP54, Class I / Class I	1	

D					
C					
B					
A					
Indice Index	Data Date	Modificare Modification/Revision	Proiectant Designer	Aprobat Consultant Approved Consultant	Aprobat CFR Approved CFR



GUVERNUL ROMANIEI
ROMANIAN GOVERNMENT

PROIECT FINANȚAT DE UNIUNEA EUROPEANĂ
EUROPEAN UNION FINANCED PROJECT



C.N.C.F. "C.F.R." - S.A.

CLIENT / CLIENT



CONSULTANT / CONSULTANT

Aprobat Approved	Șef proiect Project manager	R. Liuzza	Data Date	Semnătură Signature
Aprobat Approved	Coordonator Secțiune 1 Section 1 Coordinator	C. Gambelli	12.2011	
Verificat Checked	Expert Verificator Checking Expert	G. Fioravanti	12.2011	

SUBCONTRACTANT / SUBCONTRACTOR



Aprobat Approved	Responsabil Subconsultant Subconsultant Responsible	A.Stanciu - Dinulescu	Data Date	Semnătură Signature
Întocmit Elaborated	Proiectant Designer	D. Matei	12.2011	

Reabilitarea liniei de cale ferata Braşov - Simeria, parte componentă a coridorului IV Pan European, pentru circulația trenurilor cu viteza maximă de 160 km/h,
Tronsonul : Braşov - Sighişoara
 Rehabilitation of the railway line Braşov - Simeria, component Part of the IV Pan-European Corridor, for the trains circulation with maximum speed of 160 km/h,
Section : Braşov - Sighişoara

Proiect/Project
2004/RO/16/P/PA/003
Faza / Phase:
D.E. / E.D.

Denumire desen / Drawing Title :

Cutie etanșă pentru copertină CV3 - Stația Cața;
Cata station - CV3 sealed box for canopy

Codificare / Codification System	Scara / Scale	LOT / LOT	Nr. / No 01 / 01
E A 5 1 0 1 E 1 3 B X I E 0 0 3 1 0 5 6 1			