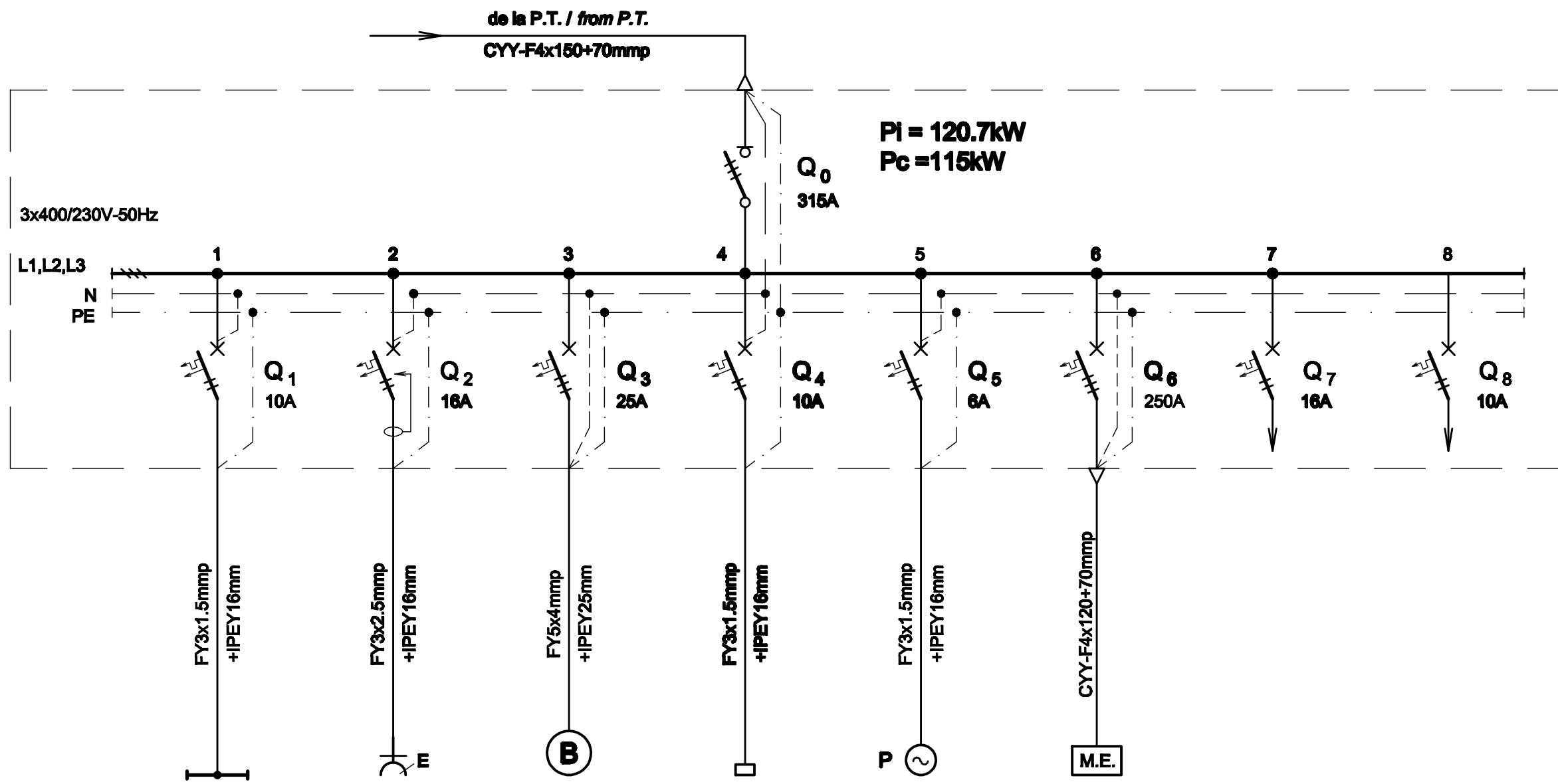


TABLOU ELECTRIC CENTRALA TERMICA T c.T. - SCHEMA MONOFILARA
T_{c.T.} THERMAL STATION ELECTRIC BOARD - SINGLE-WIRE DIAGRAM



Nr. circuit Circuit number	1	2	3	4	5	6	7	8
PI [kW]	0.4	2	9	1	0.3	105	2	1
Destinația Destination	CENTRALA TERMICA SI HIDROFOR THERMAL STATION, BOILER & HYDROFORE 4LL / Lamps	CENTRALA TERMICA SI HIDROFOR THERMAL STATION, BOILER & HYDROFORE 2LP / Sockets outlet	BOILER ELECTRIC ELECTRIC BOILER	STATIE COMPLETA DE AUTOMATIZARE PENTRU SISTEME SOLARE COMPLETE AUTOMATION STATION FOR SOLAR SYSTEMS	POMPA CIRCULATIE AGENT TERMIC PENTRU INCALZIRE HEAT CARRIER CIRCULATION PUMP FOR HEATING	MICROCENTRALA ELECTRICA PENTRU INCALZIRE MICRO ELECTRIC BOILING FOR HEATING	REZERVA MONOFAZATA SINGLE-PHASE RESERVE	REZERVA MONOFAZATA SINGLE-PHASE RESERVE

TABLOU ELECTRIC CENTRALA TERMICA T c.T. - SPECIFICATIE DE APARATAJ
T_{c.T.} THERMAL STATION ELECTRIC BOARD - EQUIPMENT SPECIFICATION

Nr. No.	Symbol	Denumirea aparatului Equipment denomination	Caracteristici tehnice Technical data	Buc. Pcs.	Observatii Remarks
0	1	2	3	4	5
1	Q0	Separator de sarcina tripolar Three-poles switch-disconnector	In=315A Un=400V Uimp=8kV f=50Hz Icm=2.2kA	1	
2	Q1	Intrerupator automat bipolar, curba B Two-poles circuit breaker, curve B	In=10A Un=230V Icu=6kA f=50Hz	1	
3	Q2	Intrerupator automat bipolar cu protectie la curent diferential rezidual, curba C / Two-poles circuit breaker with protection at residual differential current device, curve C	In=16A Un=230V Icu=6kA f=50Hz ΔIn=0,03A Tip A Nivel de imunitate 250A la forma de unda 8/20 μS Level of immunity 250A to wave form 8/20 μS	1	
4	Q3	Intrerupator automat tripolar, curba C Three-poles circuit breaker, curve C	In=25A Un=400V Icu=6kA f=50Hz	1	
5	Q5	Intrerupator automat bipolar, curba C Two-poles circuit breaker, curve C	In=6A Un=230V Icu=6kA f=50Hz	1	
6	Q6	Intrerupator automat tripolar, curba C Three-poles circuit breaker, curve C	In=250A Un=400V Icu=6kA f=50Hz	1	
7	Q7	Intrerupator automat bipolar, curba C Two-poles circuit breaker, curve C	In=16A Un=230V Icu=6kA f=50Hz	1	
8	Q4, Q8	Intrerupator automat bipolar, curba C Two-poles circuit breaker, curve C	In=10A Un=230V Icu=6kA f=50Hz	2	
9	-	Cutie / Box	IP64, Clasa I / Class I	1	

D					
C					
B					
A					
Indice Index	Data Date	Modificare Modification/Revision	Proiectant Designer	Aprobat Consultant Approved Consultant	Aprobat CFR Approved CFR
				GVERNUL ROMANIEI ROMANIAN GOVERNMENT	
		PROIECT FINANȚAT DE UNIUNEA EUROPEANĂ EUROPEAN UNION FINANCED PROJECT			
CLIENT / CLIENT		C.N.C.F. "C.F.R." - S.A.			
		PLANEN + BERATEN GmbH Consulting Engineers			
CONSULTANT / CONSULTANT					
Aprobat Approved		Șef proiect Project manager		R. Liuzza	
Aprobat Approved		Coordonator Secțiune 1 Section 1 Coordinator		C. Gambelli	
Verificat Checked		Expert Verificator Checking Expert		G. Fioravanti	
				Data Date	Semnătură Signature
				12.2011	
				12.2011	
				12.2011	
SUBCONTRACTANT / SUBCONTRACTOR					
Aprobat Approved		Responsabil Subconsultant Subconsultant Responsible		A. Stanciu - Dinulescu	
Intocmit Elaborated		Proiectant Designer		D. Matei	
				12.2011	
				12.2011	
Reabilitarea liniei de cale ferata Brașov - Simeria, parte componentă a coridorului IV Pan European, pentru circulația trenurilor cu viteză maximă de 160 km/h, Tronsonul : Brașov - Sighișoara Rehabilitation of the railway line Brașov - Simeria, component Part of the IV Pan-European Corridor, for the trains circulation with maximum speed of 160 km/h, Section : Brașov - Sighișoara					Proiect/Project 2004/RO/16/P/PA/003 Faza / Phase: D.E. / E.D.
Denumire desen / Drawing Title : Tablou electric centrala termica T c.T. - Stația Archita; Archita station - T.C.T. thermal station electric board					
Codificare / Codification System		Scara / Scale		LOT / LOT	
E A 5 1		0 1		E 1 5 B X I E 0 0 3 1 0 4 2 1	