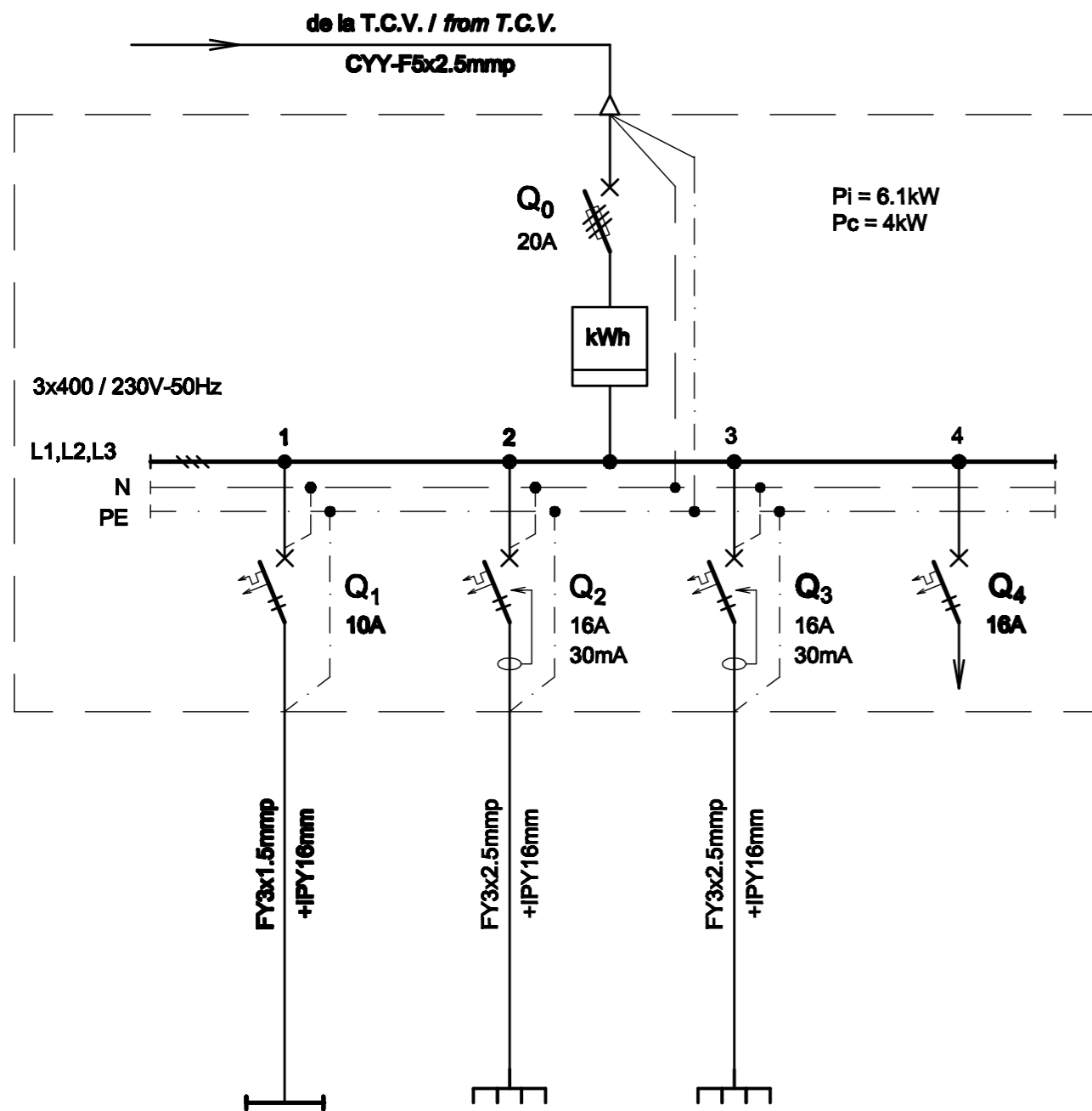


TABLOU ELECTRIC CASA DE BILETE T c.B. - SCHEMA MONOFILARA
T c.B. TIKETING ELECTRIC BOARD - SINGLE-WIRE DIAGRAM



Nr. circuit Circuit number	1	2	3	4
PI [kW]	0.1	2	2	2
Destinatia Destination	CASE BILETE TICKET OFFICE 2LL / Lamps	CASE BILETE TICKET OFFICE 1LP / Socket outlet	CASE BILETE TICKET OFFICE 1LP / Socket outlet	REZERVA MONOFAZATA SINGLE-PHASE RESERVE

TABLOU ELECTRIC CASA DE BILETE T c.B. - SPECIFICATIE DE APARATAJ
T c.B. TIKETING ELECTRIC BOARD - EQUIPMENT SPECIFICATION

Nr. No.	Symbol Symbol	Denumirea aparatului Equipment denomination	Caracteristici tehnice Technical data	Buc. Pcs.	Observatii Remarks
0	1	2	3	4	5
1	Q0	Separator de sarcina tripolar cu fuzibil / Three-poles switch-disconnectors with fusible	In=20A Un=400V Uimp=8kV f=50Hz Icm=2,2kA	1	
2	Q1	Intrerupator automat bipolar, curba B / Two-poles circuit breaker, curve B	In=10A Un=230V Icu=6kA f=50Hz	1	
3	Q2,Q3	Intrerupator automat bipolar cu protectie la curent diferential rezidual, curba C / Two-poles circuit breaker with protection at residual differential current device, curve C	In=16A Un=230V Icu=8kA f=50Hz IΔn=0,03A Tip A Nivel de imunitate 250A la forma de unda 8/20 μS Level of immunity 250A to wave form 8/20 μS	2	
4	Q4	Intrerupator automat bipolar, curba C / Two-poles circuit breaker, curve C	In=16A Un=230V Icu=8kA f=50Hz	1	
5	-	Contor trifazat de energie activa / Three-phase active energy counter	In=25A Un=400V Clasa I / Class I f=50Hz	1	
6	-	Cutie / Box	IP30, Clasa I / Class I	1	

D					
C					
B					
A					
Indice Index	Data Date	Modificare Modification/Revision	Proiectant Designer	Aprobat Consultant Approved Consultant	Aprobat CFR Approved CFR



GUVERNUL ROMANIEI
ROMANIAN GOVERNMENT

PROIECT FINANȚAT DE UNIUNEA EUROPEANĂ
EUROPEAN UNION FINANCED PROJECT

CFR

C.N.C.F. "C.F.R." - S.A.



CONSULTANT / CONSULTANT			Data Date	Semnătură Signature
Aprobat Approved	Șef proiect Project manager	R. Liuzza	12.2011	<i>[Signature]</i>
Aprobat Approved	Coordonator Secțiune 1 Section 1 Coordinator	C. Gambelli	12.2011	<i>[Signature]</i>
Verificat Checked	Expert Verificator Checking Expert	G. Fioravanti	12.2011	<i>[Signature]</i>

SUBCONTRACTANT / SUBCONTRACTOR			Data Date	Semnătură Signature
Aprobat Approved	Responsabil Subconsultant Subconsultant Responsible	A. Stanciu - Dinulescu	12.2011	<i>[Signature]</i>
Întocmit Elaborated	Proiectant Designer	D. Matei	12.2011	<i>[Signature]</i>

Reabilitarea liniei de cale ferată Brașov - Simeria, parte componentă a coridorului IV Pan European, pentru circulația trenurilor cu viteză maximă de 160 km/h,
Tronsonul : Brașov - Sighișoara

Rehabilitation of the railway line Brașov - Simeria, component Part of the IV Pan-European Corridor, for the trains circulation with maximum speed of 160 km/h,
Section : Brașov - Sighișoara

Proiect/Project
2004/RO/16/PIPA/003

Faza / Phase:
D.E. / E.D.

Denumire desen / Drawing Title :

Tablou electric Tc.b. - Stația Archita;
Archita station - T.c.b. electric board

Codificare / Codification System	Scara / Scale	LOT / LOT	Nr. / No 01 / 01
E A 5 1	0 1	E 1 5	B X I E 0 0 3 1 0 4 1 1