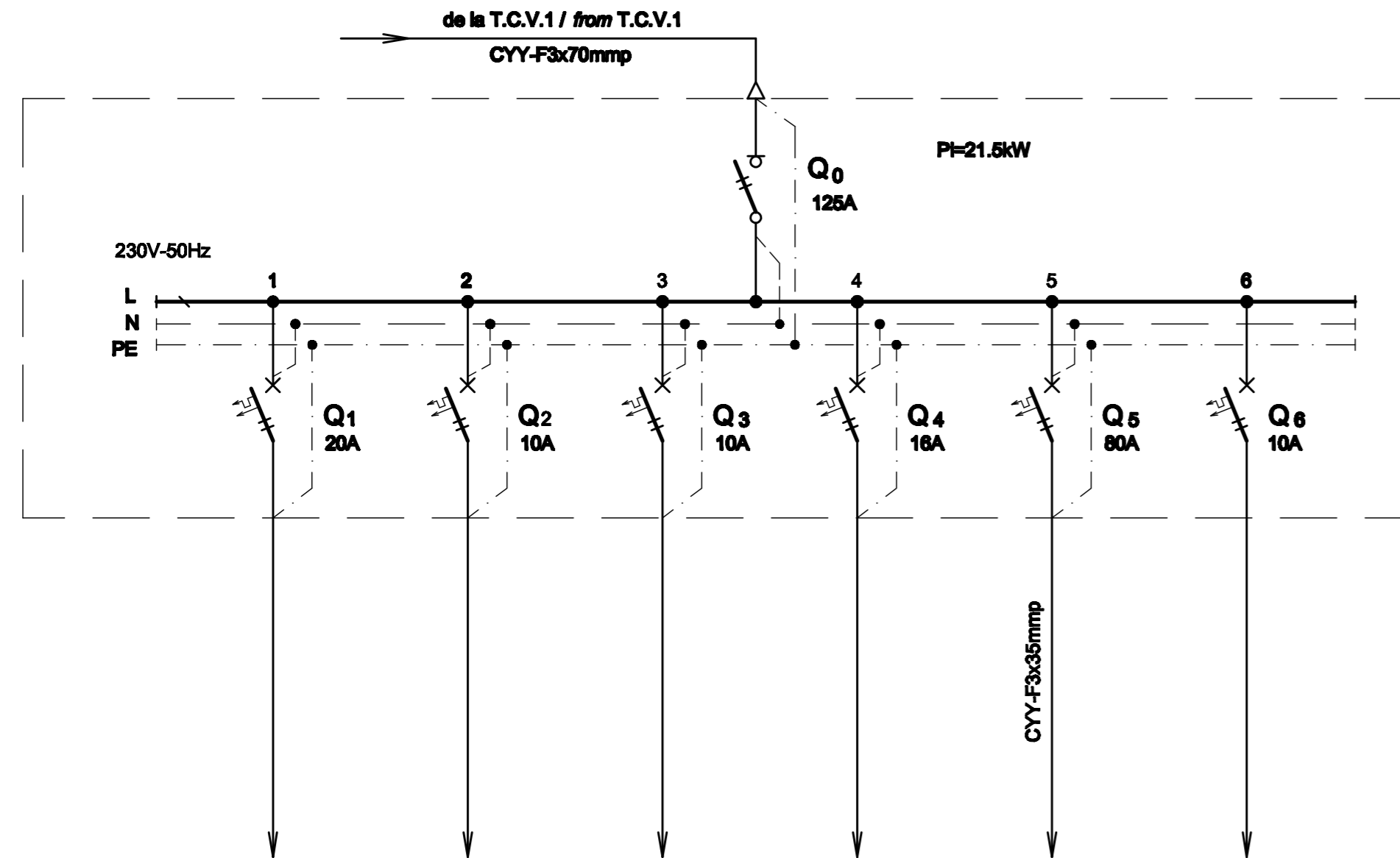


**TABLOU ELECTRIC T<sub>GSM R</sub> - SCHEMA MONOFILARA**  
**T<sub>GSM R</sub> ELECTRIC BOARD - SINGLE-WIRE DIAGRAM**



Nr. circuit Circuit number	1	2	3	4	5	6
PI [kW]	3	0.45	1.05	2	14	1
Destinatia Destination	UPS (SERVER+DVR LA TTR) UPS (SERVER+DVR FOR TTR) 1Buc. / Pieces	CAMERA VIDEO INTERIOR INDOOR VIDEO CAMERA 9Buc. / Pieces	CAMERA VIDEO EXTERIOR OUTDOOR VIDEO CAMERA 21Buc. / Pieces	ALIMENTATOR 16 CAMERE VIDEO FEEDER FOR 16 VIDEO CAMERAS 2Buc. / Pieces	ALIMENTARE GSM R GSM R SUPPLY	REZERVA MONOFAZATA SINGLE-PHASE RESERVE

**TABLOU ELECTRIC T<sub>GSM R</sub> - SPECIFICATIE DE APARATAJ**  
**T<sub>GSM R</sub> ELECTRIC BOARD - EQUIPMENT SPECIFICATION**

Nr. No.	Symbol	Denumirea aparatului Equipment denomination	Caracteristici tehnice Technical data	Buc. Pcs.	Observatii Remarks
0	1	2	3	4	5
1	Q0	Separator de sarcina bipolar Two-poles switch-disconnector	In=125A Un=230V Uimp=8kV f=50Hz Icm=2,2kA	1	
2	Q1	Intrerupator automat bipolar, curba C Two-poles circuit breaker, curve C	In=20A Un=230V Icu=8kA f=50Hz	1	
3	Q2,Q3,Q6	Intrerupator automat bipolar, curba C Two-poles circuit breaker, curve C	In=10A Un=230V Icu=8kA f=50Hz	3	
4	Q4	Intrerupator automat bipolar, curba C Two-poles circuit breaker, curve C	In=16A Un=230V Icu=8kA f=50Hz	1	
5	Q5	Intrerupator automat bipolar, curba C Two-poles circuit breaker, curve C	In=80A Un=230V Icu=8kA f=50Hz	1	
6	-	Cutie / Box	IP30, clasa I	1	

D					
C					
B					
A					
Indice Index	Data Date	Modificare Modification/Revision	Proiectant Designer	Aprobat Consultant Approved Consultant	Aprobat CFR Approved CFR



GUVERNUL ROMANIEI  
ROMANIAN GOVERNMENT

PROIECT FINANȚAT DE UNIUNEA EUROPEANĂ  
EUROPEAN UNION FINANCED PROJECT



C.N.C.F. "C.F.R." - S.A.

CLIENT / CLIENT



CONSULTANT / CONSULTANT

Aprobat Approved	Șef proiect Project manager	R. Liuzza	Data Date	Semnătură Signature
Aprobat Approved	Coordonator Secțiune 1 Section 1 Coordinator	C. Gambelli	12.2011	
Verificat Checked	Expert Verificator Checking Expert	G. Fioravanti	12.2011	

SUBCONTRACTANT / SUBCONTRACTOR



Aprobat Approved	Responsabil Subconsultant Subconsultant Responsible	A.Stanciu - Dinulescu	12.2011	
Întocmit Elaborated	Proiectant Designer	D.Matei	12.2011	

Reabilitarea liniei de cale ferata Brașov - Simeria, parte componentă a coridorului IV Pan European, pentru circulația trenurilor cu viteză maximă de 160 km/h,  
**Tronsonul : Brașov - Sighișoara**  
 Rehabilitation of the railway line Brașov - Simeria, component Part of the IV Pan-European Corridor, for the trains circulation with maximum speed of 160 km/h,  
**Section : Brașov - Sighișoara**

Proiect/Project  
2004/RO/16/P/PA/003

Faza / Phase:  
D.E. / E.D.

Denumire desen / Drawing Title :

**Tablou electric T<sub>GSM R</sub> - Stația Archita;**  
**Archita station - T<sub>GSM R</sub> electric board**

Codificare / Codification System	Scara / Scale	LOT / LOT	Nr. / No 01 / 01
----------------------------------	---------------	-----------	---------------------

E A 5 1 0 1 E 1 5 B X I E 0 0 1 1 0 5 9 1