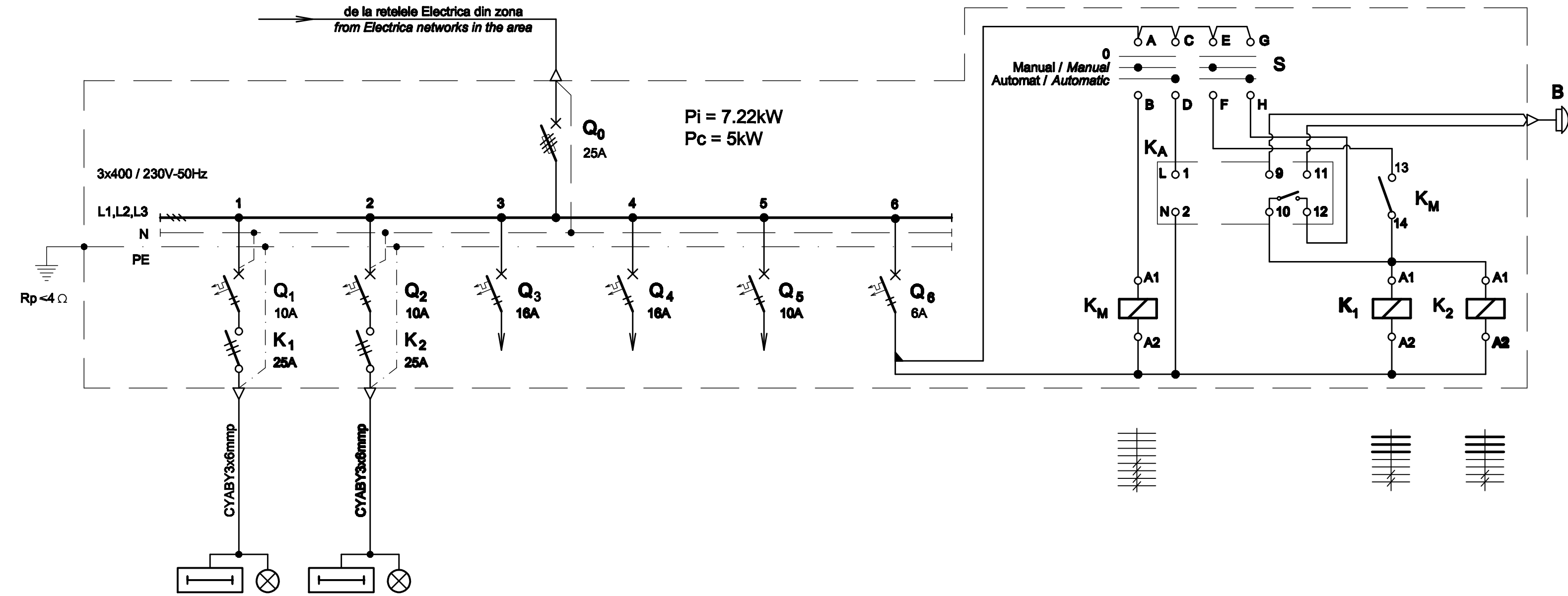


TABLOU ELECTRIC T.I.E. - SCHEMA MONOFILARA
T.I.E. ELECTRIC BOARD - SINGLE-WIRE DIAGRAM



Nr. circuit Circuit number	1	2	3	4	5	6
Pi [kW]	1.11	1.11	2	2	1	-
Destinația Destination	ILUMINAT PERON LINIA II PLATFORM LIGHTING TRACK II 13LL + 1 pictogramă 13 Lamps + 1 pictogram	ILUMINAT PERON LINIA I PLATFORM LIGHTING TRACK I 13LL + 1 pictogramă 13 Lamps + 1 pictogram	REZERVA MONOFAZATA PENTRU INSTALATII DE TELECOMUNICATI SINGLE-PHASE RESERVE FOR INSTALLATION OF TELECOMMUNICATIONS	REZERVA MONOFAZATA SINGLE-PHASE RESERVE	REZERVA MONOFAZATA SINGLE-PHASE RESERVE	CIRCUIT COMANDA ILUMINAT EXTERIOR COMMAND CIRCUIT OUTDOOR LIGHTING

TABLOU ELECTRIC T.I.E. - SPECIFICATIE DE APARATAJ
T.I.E. ELECTRIC BOARD - EQUIPMENT SPECIFICATION

Nr. No.	Symbol	Denumirea aparaturii Equipment denomination	Caracteristici tehnice Technical data	Buc. Pcs.	Observatii Remarks
0	1			4	
1	Q0	Separator de sarcina tripolar cu fuzibil / Three-poles switch-disconnector with fuse	In=25A Un=400V Uimp=6kV f=50Hz Icm=2.2kA	1	
2	Q1,Q2,Q5	Intrerupator automat bipolar, curba B Two-poles circuit breaker, curve B	In=10A Un=230V Icu=6kA f=50Hz	3	
3	Q3,Q4	Intrerupator automat bipolar, curba C Two-poles circuit breaker, curve C	In=16A Un=230V Icu=6kA f=50Hz	2	
4	Q6	Intrerupator automat bipolar, curba B Two-poles circuit breaker, curve B	In=8A Un=230V Icu=6kA f=50Hz	1	
5	K1,K2	Contactor electromagnetic tripolar de curent alternativ / Three-poles electromagnetic a.c. contactor	In=25A Un=400A Uc=230V f=50Hz	2	
6	KM	Contactor de comanda / Controller	In=10A Uc=230V f=50Hz 4NO+4NC	1	
7	KA	Intrerupator crepuscular Dusk-to-dawn switch	Un=230Vca In=10A E=2...60lx f=50Hz Tf=-25°C...+55°C	1	
8	-	Cutie / Box	Minim IP54, clasa I Minimum IP54, class I	1	

D					
C					
B					
A					
Indice Index	Data Date	Modificare Modification/Revision	Proiectant Designer	Aprobat Consultant Approved Consultant	Aprobat CFR Approved CFR



GUVERNUL ROMANIEI
ROMANIAN GOVERNMENT

PROIECT FINANȚAT DE UNIUNEA EUROPEANĂ
EUROPEAN UNION FINANCED PROJECT



C.N.C.F. "C.F.R." - S.A.

CLIENT / CLIENT



CONSULTANT / CONSULTANT

Aprobat Approved	Șef proiect Project manager	R. Liuzza	Data Date	Semnătură Signature
Aprobat Approved	Coordonator Secțiune 1 Section 1 Coordinator	C. Gambelli	12.2011	
Verificat Checked	Expert Verificator Checking Expert	G. Fioravanti	12.2011	

SUBCONTRACTANT / SUBCONTRACTOR

Aprobat Approved	Responsabil Subconsultant Subconsultant Responsible	A. Stanciu - Dinulescu	12.2011	
Intocmit Elaborated	Proiectant Designer	D. Matei	12.2011	

Reabilitarea liniei de cale ferată Brașov - Simeria, parte componentă a coridorului IV Pan European, pentru circulația trenurilor cu viteză maximă de 160 km/h,
Tronsonul : Brașov - Sighișoara
 Rehabilitation of the railway line Brașov - Simeria, component Part of the IV Pan-European Corridor, for the trains circulation with maximum speed of 160 km/h,
Section : Brașov - Sighișoara

Proiect/Project
2004/RO/16/P/PA/003

Faza / Phase:
D.E. / E.D.

Denumire desen / Drawing Title :

Tablou electric T.I.E. - Halta Feleag;
Feleag flag station - T.I.E. electric board

Codificare / Codification System	Scara / Scale	LOT / LOT	Nr. / No 01 / 01
----------------------------------	---------------	-----------	---------------------

E A 5 1 0 1 E 1 6 B X I E 0 0 1 1 0 1 0 1