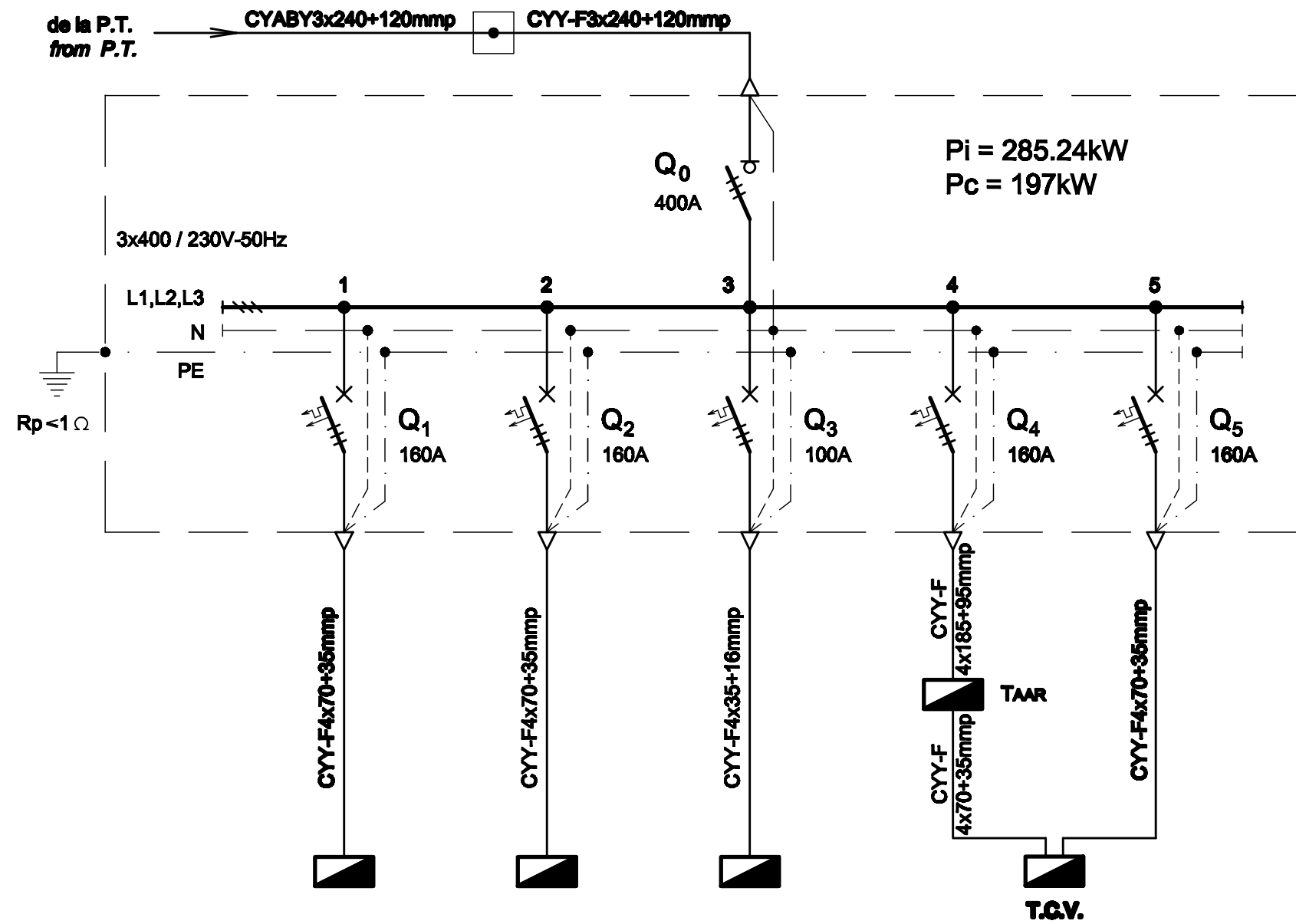


TABLOU ELECTRIC T.G.D.j.t. - SCHEMA MONOFILARA
T.G.D.j.t. ELECTRIC BOARD - SINGLE-WIRE DIAGRAM



TABLOU ELECTRIC T.G.D.j.t. - SPECIFICATIE DE APARATAJ
T.G.D.j.t. ELECTRIC BOARD - EQUIPMENT SPECIFICATION

Nr. No.	Symbol	Denumirea aparaturii Equipment denomination	Caracteristici tehnice Technical data	Buc. Pos.	Observatii Remarks
0	1	2	3	4	5
1	Q0	Separator de sarcina tripolar Three-poles switch-disconnector	In=400A Un=400V Uimp=8kV f=50Hz Icm=2.2kA	1	
2	Q1,Q2,Q4,Q5	Intrerupator automat tripolar, curba C Three-poles circuit breaker, curve C	In=160A Un=400V Icu=8kA f=50Hz	4	
3	Q3	Intrerupator automat tripolar, curba C Three-poles circuit breaker, curve C	In=100A Un=400V Icu=8kA f=50Hz	1	
4	-	Cutie / Box	IP54, Clasa I / Class I	1	

Nr. circuit Circuit number	1	2	3	4
PI [kW]	80.58	64.95	54.25	85.46
Destinatia Destination	TABLOU ELECTRIC GENERAL - T.G. GENERAL ELECTRIC BOARD - T.G.	TABLOU ELECTRIC - T.I.E. ELECTRIC BOARD - T.I.E.	TABLOU ELECTRIC - T.C.V.1 ELECTRIC BOARD - T.C.V.1	TABLOU ELECTRIC - T.C.V. ELECTRIC BOARD - T.C.V.

D					
C					
B					
A					
Indice Index	Data Date	Modificare Modification/Revision	Proiectant Designer	Aprobat Consultant Approved Consultant	Aprobat CFR Approved CFR



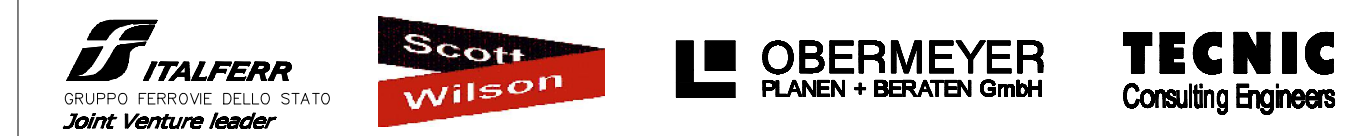
GUVERNUL ROMANIEI
ROMANIAN GOVERNMENT

PROIECT FINANȚAT DE UNIUNEA EUROPEANĂ
EUROPEAN UNION FINANCED PROJECT

CFR

C.N.C.F. "C.F.R." - S.A.

CLIENT / CLIENT



CONSULTANT / CONSULTANT			Data Date	Semnătură Signature
Aprobat Approved	Șef proiect Project manager	R. Liuzza	12.2011	<i>[Signature]</i>
Aprobat Approved	Coordonator Secțiune 1 Section 1 Coordinator	C. Gambelli	12.2011	<i>[Signature]</i>
Verificat Checked	Expert Verificator Checking Expert	G. Fioravanti	12.2011	<i>[Signature]</i>

SUBCONTRACTANT / SUBCONTRACTOR				
Aprobat Approved	Responsabil Subconsultant Subconsultant Responsible	A.Stanciu - Dinulescu	12.2011	<i>[Signature]</i>
Întocmit Elaborated	Proiectant Designer	D. Matei	12.2011	<i>[Signature]</i>

Reabilitarea liniei de cale ferata Brașov - Simeria, parte componentă a a coridorului IV Pan European, pentru circulația trenurilor cu viteza maximă de 160 km/h,
Tronsonul : Brașov - Sighișoara
 Rehabilitation of the railway line Brașov - Simeria, component Part of the IV Pan-European Corridor, for the trains circulation with maximum speed of 160 km/h,
Section : Brașov - Sighișoara

Proiect/Project
 2004/RO/16/P/PA/003

Faza / Phase:
 D.E. / E.D.

Denumire desen / Drawing Title :

Tablou electric T.G.D.j.t. - Stația Vânători;
Vanatori station - T.G.D.j.t. electric board

Codificare / Codification System	Scara / Scale	LOT / LOT	Nr. / No 01 / 01
E A 5 1 0 1 E 1 7 B X I E 0 0 3 1 0 4 8 1			