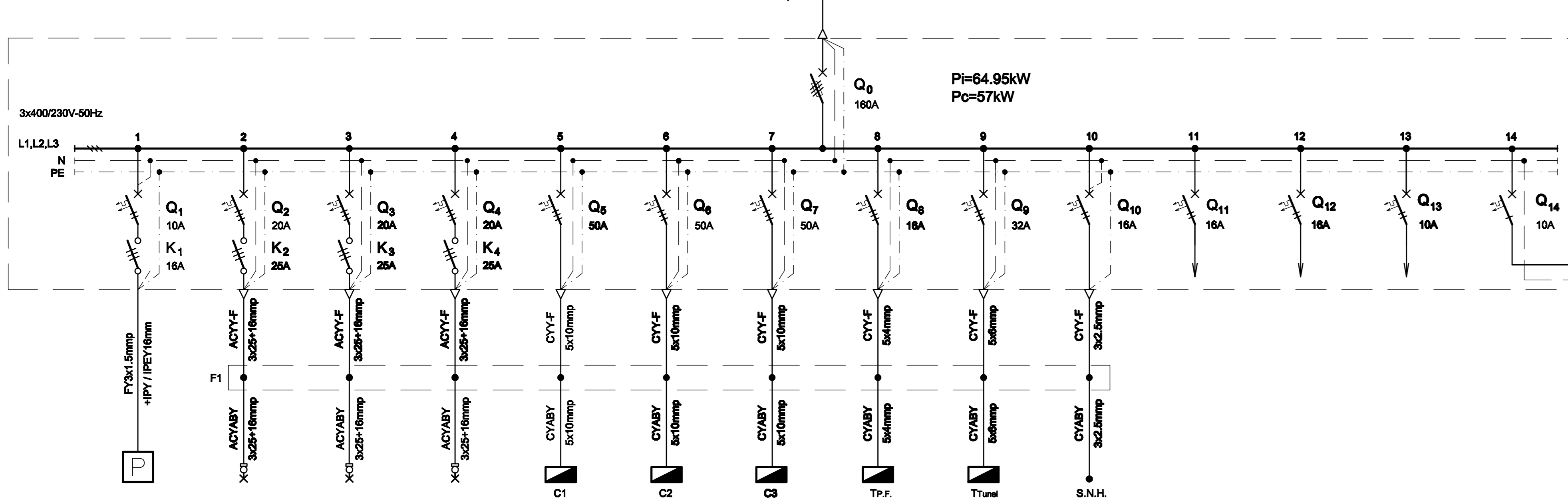
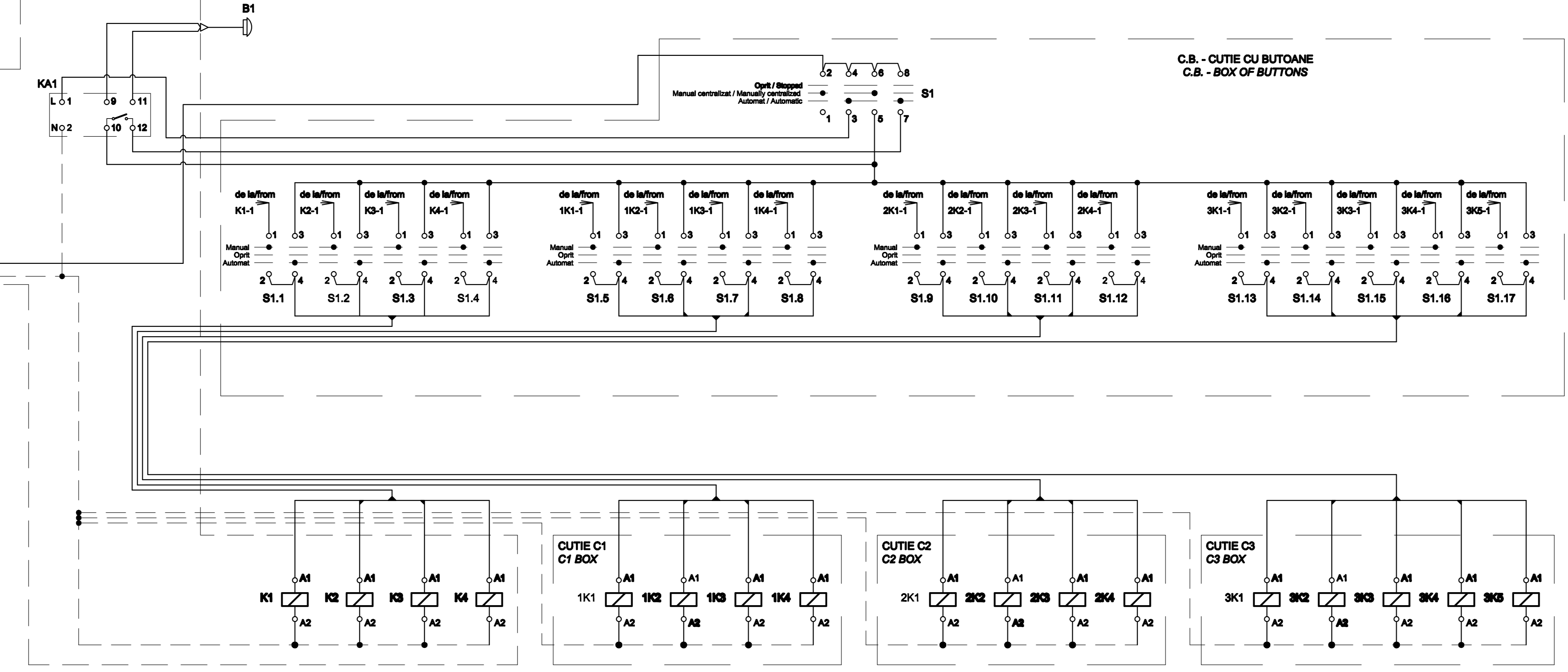


TABLOU ELECTRIC T.I.E. - SCHEMA MONOFILARA
T.I.E. ELECTRIC BOARD - SINGLE-WIRE DIAGRAM



Nr. circuit Circuit number	1	2	3	4	5	6	7	8	9	10	11	12	13	14
Pi [kW]	0.7	3	4.25	5.5	11.96	11.96	8.3	2.2	11.78	0.3	2	2	1	-
Destinația Destination	ILUMINAT FATADA CLADIRE STATION FAÇADE LIGHTING OF STATION BUILDING 10L / Lamps	ILUMINAT CAP X X HEAD LIGHTING 12L / Lamps	ILUMINAT CAP X X HEAD LIGHTING 17L / Lamps	ILUMINAT CAP Y Y HEAD LIGHTING 22L / Lamps	CUTE ETANSA PENTRU COPERTINA - C1 SEALED BOX FOR CANOPY - C1	CUTE ETANSA PENTRU COPERTINA - C2 SEALED BOX FOR CANOPY - C2	CUTE ETANSA PENTRU COPERTINA - C3 SEALED BOX FOR CANOPY - C3	PUT FORAT TABLOU ELECTRIC - T.P.F. DRILLED WELL ELECTRIC BOARD - T.P.F.	TUNEL PIETONAL TABLOU ELECTRIC - T Tunnel PEDESTRIAN TUNNEL ELECTRIC BOARD - T Tunnel	SEPARATOR DE NAMOL SI HIDROCARBURI MUD AND HYDROCARBON SEPARATOR	REZERVA MONOFAZATA SINGLE-PHASE RESERVE	REZERVA MONOFAZATA SINGLE-PHASE RESERVE	REZERVA MONOFAZATA SINGLE-PHASE RESERVE	CIRCUIT COMANDA ILLUMINAT EXTERIOR COMMAND CIRCUIT OUTDOOR LIGHTING



TABLOU ELECTRIC T.I.E. - SPECIFICATIE DE APARATAJ / T.I.E. ELECTRIC BOARD - EQUIPMENT SPECIFICATION

Nr. No.	Symbol	Denumirea aparatului Equipment denomination	Caracteristici tehnice Technical data	Buc. Pcs.	Observatii Remarks
0	1			4	
1	Q0	Separator de sarcina tripolar cu fuzibil / Three-poles switch-disconnector with fusible	In=160A Un=400V Uimp=8kV f=50Hz Icm=2.2kA	1	
2	Q1	Intreupator automat bipolar, curba B / Two-poles circuit breaker, curve B	In=10A Un=230V Icu=6kA f=50Hz	1	
3	Q2,Q3,Q4	Intreupator automat tripolar, curba B / Three-poles circuit breaker, curve B	In=20A Un=400V Icu=6kA f=50Hz	3	
4	Q5,Q6,Q7	Intreupator automat tripolar, curba C / Three-poles circuit breaker, curve C	In=50A Un=400V Icu=6kA f=50Hz	3	
5	Q10,Q11,Q12	Intreupator automat bipolar, curba C / Two-poles circuit breaker, curve C	In=16A Un=230V Icu=6kA f=50Hz	3	
6	Q13	Intreupator automat bipolar, curba C / Two-poles circuit breaker, curve C	In=10A Un=230V Icu=6kA f=50Hz	1	
7	Q14	Intreupator automat monopolar, curba D / Single-pole circuit breaker, curve D	In=10A Un=230V f=50Hz Icu=6kA	1	
8	Q8	Intreupator automat tripolar, curba C / Three-poles circuit breaker, curve C	In=32A Un=400V Icu=6kA f=50Hz	1	
9	K1	Contactor electromagnetic tripolar de curent alternativ / Three-poles electromagnetic a.c. contactor	In=16A Un=400A Uc=230V f=50Hz	1	
10	K2,K3,K4	Contactor electromagnetic tripolar de curent alternativ / Three-poles electromagnetic a.c. contactor	In=25A Un=400A Uc=230V f=50Hz	3	
11	KA1	Intreupator crepuscular / Twilight switch	Un=230V; In=10A E=2...60bc; f=50Hz Tf=25°C...+55°C	1	
12	S1.1,...,S1.17	Comutator cu came / Cam switch	Un=230V In=10kA f=50Hz	17	Comutatoarele cu came se vor monta in C.B. (cutie cu butoane) / Cam switches will be installed in C.B.(box of buttons)
13	S1	Comutator cu came / Cam switch	Un=230V In=10kA f=50Hz	1	Comutatorul cu came se va monta in C.B. (cutie cu butoane) / Cam switch will be installed in C.B.(box of buttons)
14	B1	Celula fotoelectrica / Photoelectric cell	Tf=40°C...+70°C IP66	1	
15	Q8	Intreupator automat tripolar, curba C / Three-poles circuit breaker, curve C	In=16A Un=400V Icu=6kA f=50Hz	1	
16	-	Cutie / Box	IP30, Class I / Class I	1	

D					
C					
B					
A					
Indice Index	Data Date	Modificarea Modification/Revision	Proiectant Designer	Aprobat Consultant Approved Consultant	Aprobat CFR Approved CFR
		PROIECT FINANȚAT DE UNIUNEA EUROPEANĂ EUROPEAN UNION FINANCED PROJECT			
		C.N.C.F. "C.F.R." - S.A.			
CLIENT / CLIENT					
CONSULTANT / CONSULTANT				Date Date Semnătură Signature	
Aprobat Approved	Șef proiect Project manager	R. Liuzza		12.2011	
Aprobat Approved	Coordonator Secțiune 1 Section 1 Coordinator	C. Gambelli		12.2011	
Verificat Checked	Expert Verificator Checking Expert	G. Fioravanti		12.2011	
SUBCONTRACTANT / SUBCONTRACTOR		Responsabil Subcontractant Subcontractant Responsible		Date Date	
Aprobat Approved	Elaborat Elaborated	A. Stanciu - Dinulescu		12.2011	
Reabilitarea liniei de cale ferata Braşov - Simeria, parte componentă a coridorului IV Pan European, pentru circulația trenurilor cu viteză maximă de 160 km/h, Tronsoanel : Braşov - Sighişoara Rehabilitation of the railway line Braşov - Simeria, component Part of the IV Pan-European Corridor, for the trains circulation with maximum speed of 160 km/h, Section : Braşov - Sighişoara		Proiect/Project 2004/RO16/PFA/003		Faşa / Phase: D.E. / E.D.	
Denumire desen / Drawing Title : Tablou electric T.I.E. - Stația Vânători; Vanatori station - T.I.E. electric board					
Codificare / Codification System		Scara / Scale		Nr. / No	
E A 5 1		0 1		E 1 7	
B X		I E		0 0 3 1	
0 4 7		1		1	