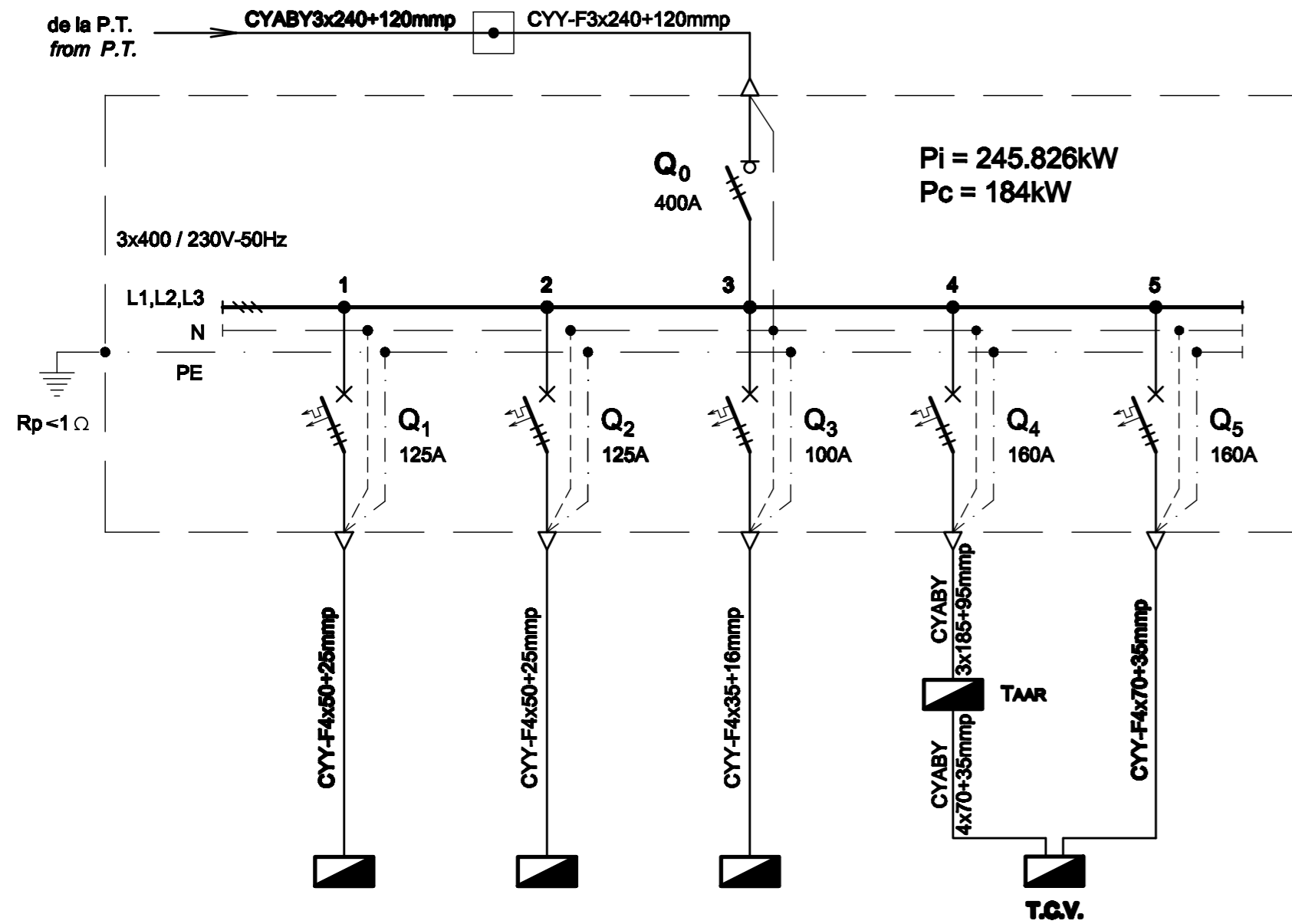


**TABLOU ELECTRIC T.G.D.j.t. - SCHEMA MONOFILARA**  
**T.G.D.j.t. ELECTRIC BOARD - SINGLE-WIRE DIAGRAM**



Nr. circuit Circuit number	1	2	3	4
PI [kW]	67.566	59.69	54.2	64.37
Destinația Destination	TABLOU ELECTRIC GENERAL - T.G. GENERAL ELECTRIC BOARD - T.G.	TABLOU ELECTRIC - T.I.E. ELECTRIC BOARD - T.I.E.	TABLOU ELECTRIC - T.C.V.1 ELECTRIC BOARD - T.C.V.1	TABLOU ELECTRIC - T.C.V. ELECTRIC BOARD - T.C.V.

**TABLOU ELECTRIC T.G.D.j.t. - SPECIFICATIE DE APARATAJ**  
**T.G.D.j.t. ELECTRIC BOARD - EQUIPMENT SPECIFICATION**

Nr. No.	Symbol Symbol	Denumirea aparaturii Equipment denomination	Caracteristici tehnice Technical data	Buc. Pos.	Observatii Remarks
0	1	2	3	4	5
1	Q0	Separator de sarcina tripolar Three-poles switch-disconnector	In=400A Un=400V Uimp=8kV f=50Hz Icm=2.2kA	1	
2	Q1,Q2	Intreupator automat tripolar, curba C Three-poles circuit breaker, curve C	In=125A Un=400V Icu=8kA f=50Hz	2	
3	Q4,Q5	Intreupator automat tripolar, curba C Three-poles circuit breaker, curve C	In=160A Un=400V Icu=8kA f=50Hz	1	
3	Q3	Intreupator automat tripolar, curba C Three-poles circuit breaker, curve C	In=100A Un=400V Icu=8kA f=50Hz	1	
4	-	Cutie / Box	IP54, Clasa I / Class I	1	

D					
C					
B					
A					
Indice Index	Data Date	Modificari Modification/Revision	Proiectant Designer	Aprobat Consultant Approved Consultant	Aprobat CFR Approved CFR



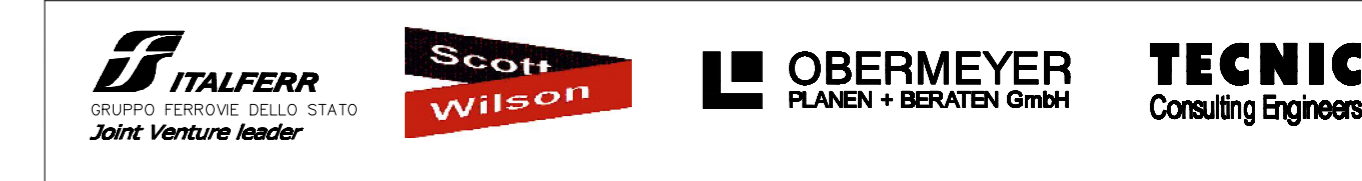
**GUVERNUL ROMANIEI**  
**ROMANIAN GOVERNMENT**

**PROIECT FINANȚAT DE UNIUNEA EUROPEANĂ**  
**EUROPEAN UNION FINANCED PROJECT**

**CFR**

**C.N.C.F. "C.F.R." - S.A.**

**CLIENT / CLIENT**



CONSULTANT / CONSULTANT			Data Date	Semnătură Signature
Aprobat Approved	Șef proiect Project manager	R. Liuzza	12.2011	<i>[Signature]</i>
Aprobat Approved	Coordonator Secțiune 1 Section 1 Coordinator	C. Gambelli	12.2011	<i>[Signature]</i>
Verificat Checked	Expert Verificator Checking Expert	G. Fioravanti	12.2011	<i>[Signature]</i>

SUBCONTRACTANT / SUBCONTRACTOR				
Aprobat Approved	Responsabil Subcontractant Subcontractant Responsible	A.Stanciu - Dinulescu	12.2011	<i>[Signature]</i>
Întocmit Elaborated	Proiectant Designer	D. Matei	12.2011	<i>[Signature]</i>

Reabilitarea liniei de cale ferata Brașov - Simeria, parte componentă a a coridorului IV Pan European, pentru circulația trenurilor cu viteza maximă de 160 km/h,  
**Tronsonul : Brașov - Sighișoara**  
 Rehabilitation of the railway line Brașov - Simeria, component Part of the IV Pan-European Corridor, for the trains circulation with maximum speed of 160 km/h,  
**Section : Brașov - Sighișoara**

**Proiect/Project**  
 2004/RO/16/P/PA/003

**Faza / Phase:**  
 D.E. / E.D.

Denumire desen / Drawing Title :

**Tablou electric T.G.D.j.t. - Stația Albești Târnava;**  
**Albești Tarnava station - T.G.D.j.t. electric board**

Codificare / Codification System	Scara / Scale	LOT / LOT	Nr. / No 01 / 01
E A 5 1 0 1 E 1 9 B X I E 0 0 3 1 0 4 8 1			