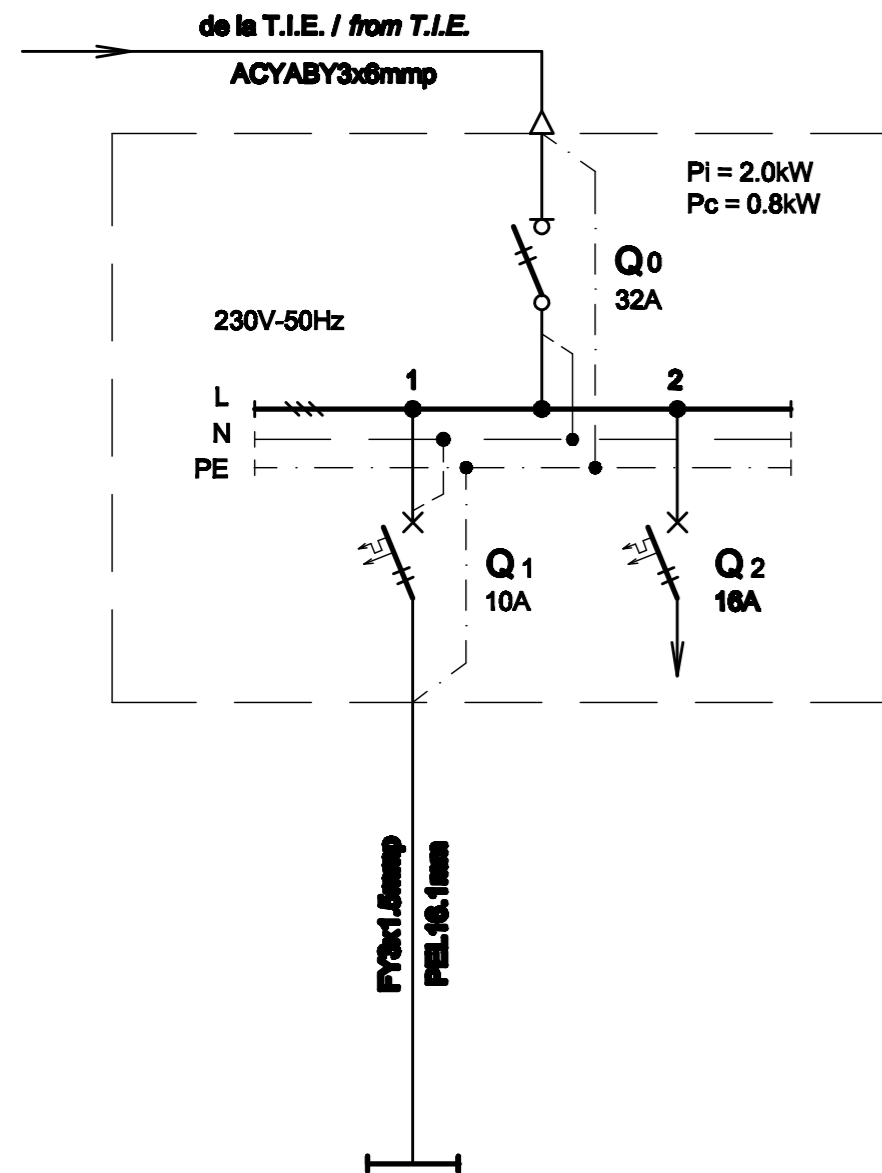


**TABLOU ELECTRIC TUNEL PIETONAL EXISTENT T<sub>Tunel exist.</sub> - SCHEMA MONOFILARA**  
**T<sub>Tunel exist.</sub> EXISTING PEDESTRIAN TUNNEL ELECTRIC BOARD - SINGLE-WIRE DIAGRAM**



Nr. circuit Circuit number	1	2
Pi [kW]	0.8	1.2
Destinatia Destination	ILUMINAT TUNEL PIETONAL EXISTENT EXISTING PEDESTRIAN TUNNEL LIGHTING 16LL / Lampe	REZERVA MONOFAZATA SINGLE-PHASE RESERVE

**TABLOU ELECTRIC TUNEL PIETONAL EXISTENT T<sub>Tunel exist.</sub> - SPECIFICATIE DE APARATAJ**  
**T<sub>Tunel exist.</sub> EXISTING PEDESTRIAN TUNNEL ELECTRIC BOARD - EQUIPMENT SPECIFICATION**

Nr. No.	Simbol Symbol	Denumirea aparatului Equipment denomination	Caracteristici tehnice Technical data	Buc. Pcs.	Observatii Remarks
0	1	2	3	4	5
1	Q0	Separator de sarcina bipolar Two-poles switch-disconnector	In=32A Un=230V Uimp=8kV f=50Hz Icm=2.2kA	1	
2	Q1	Intreupator automat bipolar, curba B Two-poles circuit breaker, curve B	In=10A Un=230V Icu=8kA f=50Hz	1	
3	Q2	Intreupator automat bipolar, curba C Two-poles circuit breaker, curve C	In=16A Un=230V Icu=8kA f=50Hz	1	
4	-	Cutie / Box	IP54, Clasa I / Class I	1	

Indice Index	Data Date	Modificare Modification/Revision	Proiectant Designer	Aprobat Consultant Approved Consultant	Aprobat CFR Approved CFR
D					
C					
B					
A					



GUVERNUL ROMANIEI  
ROMANIAN GOVERNMENT

PROIECT FINANȚAT DE UNIUNEA EUROPEANĂ  
EUROPEAN UNION FINANCED PROJECT



C.N.C.F. "C.F.R." - S.A.

CLIENT / CLIENT



CONSULTANT / CONSULTANT

Aprobat Approved	Șef proiect Project manager	R. Liuzza	Data Date	Semnătură Signature
Aprobat Approved	Coordonator Secțiune 1 Section 1 Coordinator	C. Gambelli	12.2011	
Verificat Checked	Expert Verificator Checking Expert	G. Fioravanti	12.2011	

SUBCONTRACTANT / SUBCONTRACTOR



Aprobat Approved	Responsabil Subconsultant Subconsultant Responsible	A.Stanciu - Dinulescu	12.2011	
Întocmit Elaborated	Proiectant Designer	D. Matei	12.2011	

Reabilitarea liniei de cale ferata Braşov - Simeria, parte componentă a coridorului IV Pan European, pentru circulația trenurilor cu viteză maximă de 160 km/h,  
**Tronsonul : Braşov - Sighişoara**  
 Rehabilitation of the railway line Braşov - Simeria, component Part of the IV Pan-European Corridor, for the trains circulation with maximum speed of 160 km/h,  
**Section : Braşov - Sighişoara**

Proiect/Project  
2004/RO/16/P/PA/003  
Faza / Phase:  
D.E. / E.D.

Denumire desen / Drawing Title :

**Tablou electric tunel pietonal existent T<sub>Tunel exist.</sub> - Stația Albești Târnava;**  
**Albesti Tarnava station - T<sub>Tunel exist.</sub> existing pedestrian tunnel electric board**

Codificare / Codification System	Scara / Scale	LOT / LOT	Nr. / No 01 / 01
----------------------------------	---------------	-----------	---------------------

E A 5 1 0 1 E 1 9 B X I E 0 0 3 1 0 6 0 1