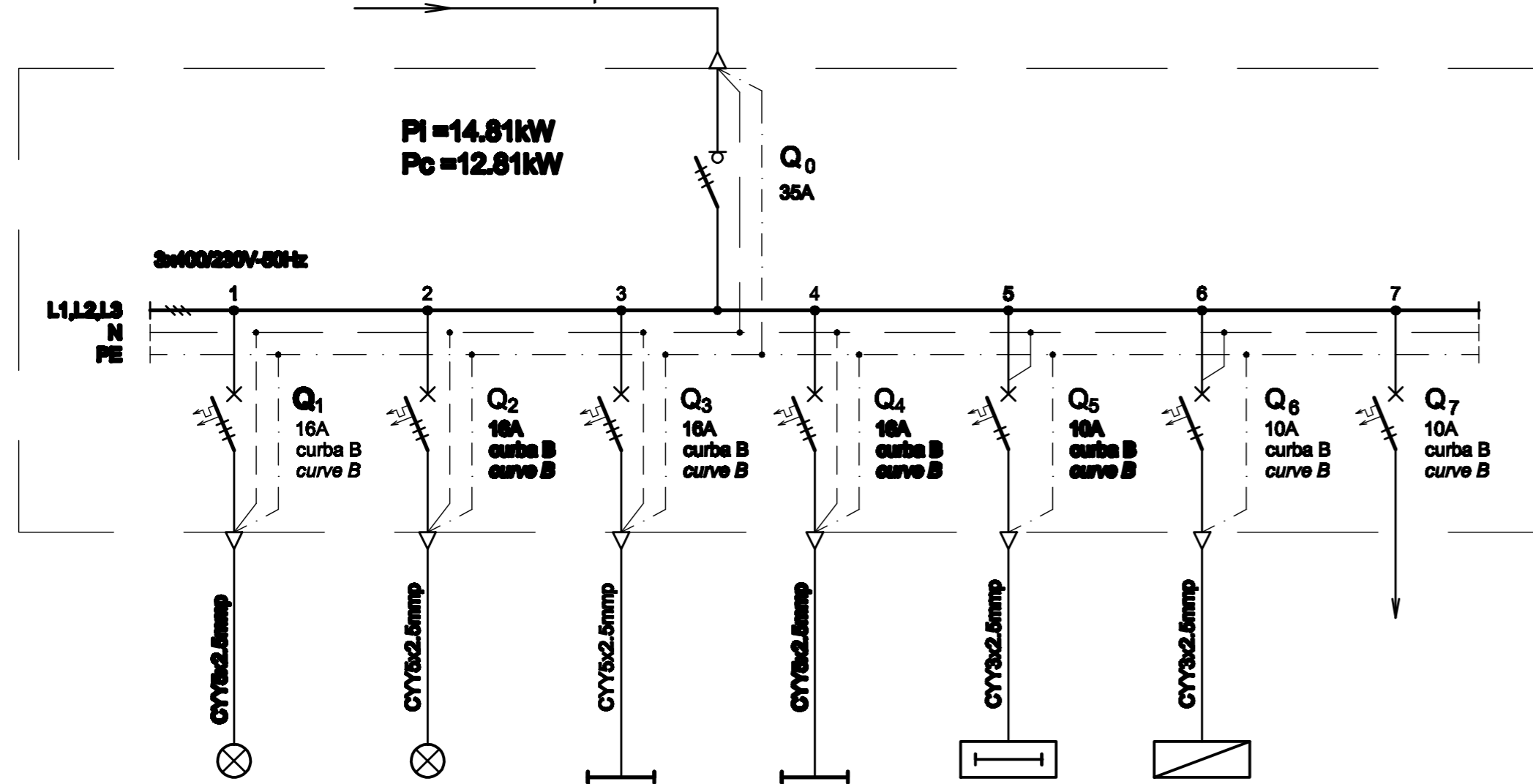


CUTIE ETANSA PENTRU COPERTINA C - SCHEMA MONOFILARA
C SEALED BOX FOR CANOPY - SINGLE-WIRE DIAGRAM

de la tabloul T.I.E. al cladirii C.E.D.
 from T.I.E. board of the C.E.D. building
 CYABY5x6mmp



PI = 14.81kW
Pc = 12.81kW

CUTIE ETANSA PENTRU COPERTINA C - SPECIFICATIE DE APARATAJ
C SEALED BOX FOR CANOPY - EQUIPMENT SPECIFICATION

Nr. No.	Simbol Symbol	Denumirea aparatului Equipment denomination	Caracteristici tehnice Technical data	Buc. Pos.	Observatii Remarks
0	1	2	3	4	5
1	Q0	Separator de sarcina tripolar Three-pole switch-disconnector	In=35A Un=400V Uimp=8kV f=50Hz Icm=2.2kA	1	
2	Q1,...Q4	Intreupator automat tripolar, curba B Three-pole circuit breaker, curve B	In=16A Un=400V Icu=6kA f=50Hz	4	
3	Q5,Q6,Q7	Intreupator automat bipolar, curba B Two-poles circuit breaker, curve B	In=10A Un=230V Icu=6kA f=50Hz	3	
4	-	Cutie / Box	IP54, Clasa I / Class I	1	

Nr. circuit Circuit number	1	2	3	4	5	6	7
PI [kW]	0.98	0.63	4.95	4.95	1.3	1	1
Destinatia Destination	ILUMINAT PERON PLATFORM LIGHTING 14LL / Lamps	ILUMINAT PERON PLATFORM LIGHTING 9LL / Lamps	ILUMINAT PERON PLATFORM LIGHTING 99LL / Lamps	ILUMINAT PERON PLATFORM LIGHTING 99LL / Lamps	PICTOGRAMA - PERON PICTOGRAMS - PLATFORM 10Buc. / Pieces	PANOU PUBLICITAR LUMINOS ILLUMINATED BILLBOARD 2Buc. / Pieces	REZERVA MONOFAZATA SINGLE-PHASE RESERVE

D					
C					
B					
A					
Indice Index	Data Date	Modificare Modification/Revision	Proiectant Designer	Aprobat Consultant Approved Consultant	Aprobat CFR Approved CFR



GUVERNUL ROMANIEI
 ROMANIAN GOVERNMENT

PROIECT FINANȚAT DE UNIUNEA EUROPEANĂ
 EUROPEAN UNION FINANCED PROJECT



C.N.C.F. "C.F.R." - S.A.

CLIENT / CLIENT



CONSULTANT / CONSULTANT

Aprobat Approved	Șef proiect Project manager	R. Liuzza	Data Date	Semnătură Signature
Aprobat Approved	Coordonator Secțiune 1 Section 1 Coordinator	C. Gambelli	12.2011	
Verificat Checked	Expert Verificator Checking Expert	G. Fioravanti	12.2011	

SUBCONTRACTANT / SUBCONTRACTOR

Aprobat Approved	Responsabil Subconsultant Subconsultant Responsible	A.Stanciu - Dinulescu	Data Date	Semnătură Signature
Întocmit Elaborated	Proiectant Designer	D. Matei	12.2011	

Reabilitarea liniei de cale ferata Braşov - Simeria, parte componentă a coridorului IV Pan European, pentru circulația trenurilor cu viteza maximă de 160 km/h,
 Tronsonul : Braşov - Sighişoara
 Rehabilitation of the railway line Braşov - Simeria, component Part of the IV Pan-European Corridor, for the trains circulation with maximum speed of 160 km/h,
 Section : Braşov - Sighişoara

Proiect/Project
 2004/RO/16/P/PA/003

Faza / Phase:
 D.E. / E.D.

Denumire desen / Drawing Title :

Cutie etanşă pentru copertină C - Stația Sighişoara;
Sighişoara station - C sealed box for canopy

Codificare / Codification System	Scara / Scale	LOT / LOT	Nr. / No 01 / 01
----------------------------------	---------------	-----------	---------------------

E A 5 1 0 1 E 2 1 B X I E 0 0 1 1 0 1 2 1