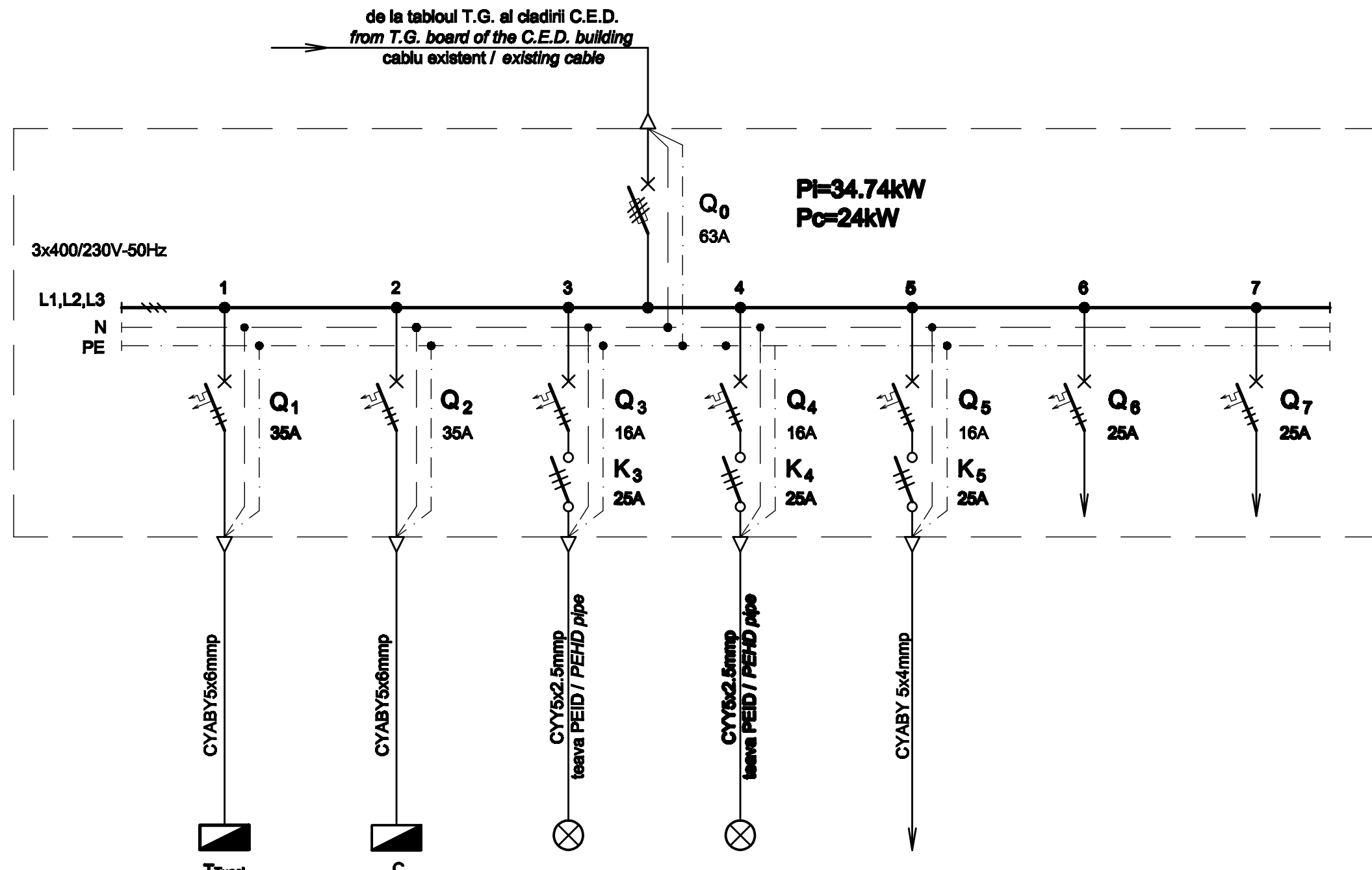


TABLOU ELECTRIC T.I.E. - SCHEMA MONOFILARA
T.I.E. ELECTRIC BOARD - SINGLE-WIRE DIAGRAM

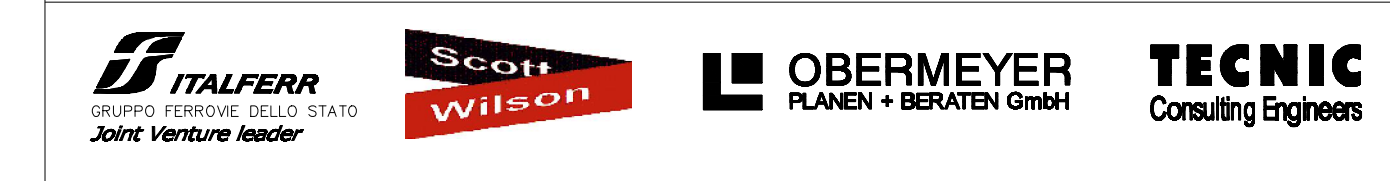


Nr. circuit Circuit number	1	2	3	4	5	6	7
Pi [kW]	10.25	14.81	1.12	0.68	2	3	3
Destinatia Destination	TABLOU ELECTRIC TUNEL PIETONAL - T _{Tunel} PEDESTRIAN TUNNEL ELECTRIC BOARD - T _{Tunel}	CUTE ETANSA PENTRU COPERTINA - C SEALED BOX FOR CANOPY - C	ILUMINAT PERON - LINIA 1 STANGA PLATFORM LIGHTING-TRACK 1 LEFT 10LL / Lamps	ILUMINAT PERON - LINIA 1 DREAPTA PLATFORM LIGHTING-TRACK 1 RIGHT 8LL / Lamps	ILUMINAT PIATA GARI RAILWAY STATION SQUARE LIGHTING	REZERVA TRIFAZATA THREE-PHASE RESERVE	REZERVA TRIFAZATA THREE-PHASE RESERVE

TABLOU ELECTRIC T.I.E. - SPECIFICATIE DE APARATAJ
T.I.E. ELECTRIC BOARD - EQUIPMENT SPECIFICATION

Nr. No.	Symbol	Denumirea aparatului Equipment denomination	Caracteristici tehnice Technical data	Buc. Pcs.	Observatii Remarks
0	1	2	3	4	5
1	Q0	Separator de sarcina tripolar cu fuzibili / Three-poles switch-disconnector with fusible	In=63A Un=400V Uimp=8kV f=50Hz Icm=2.2kA	1	
2	Q1,Q2	Intreupator automat tripolar, curba C / Three-poles circuit breaker, curve C	In=35A Un=400V Icu=6kA f=50Hz	2	
3	Q3,Q4,Q5	Intreupator automat tripolar, curba B / Three-poles circuit breaker, curve B	In=16A Un=400V Icu=6kA f=50Hz	3	
4	Q6,Q7	Intreupator automat tripolar, curba B / Three-poles circuit breaker, curve B	In=25A Un=400V Icu=6kA f=50Hz	2	
5	K3,K4,K5	Contactur electromagnetic tripolar de curent alternativ / Three-poles electromagnetic a.c. contactor	In=25A Un=400A Uc=230V f=50Hz	3	
6	-	Cutie / Box	IP30, Clasa I / Class I	1	

D					
C					
B					
A					
Indice Index	Data Date	Modificare Modification/Revision	Proiectant Designer	Aprobat Consultant Approved Consultant	Aprobat CFR Approved CFR



CONSULTANT / CONSULTANT			Data Date	Semnătură Signature
Aprobat Approved	Șef proiect Project manager	R. Liuzza	12.2011	<i>[Signature]</i>
Aprobat Approved	Coordonator Secțiune 1 Section 1 Coordinator	C. Gambelli	12.2011	<i>[Signature]</i>
Verificat Checked	Expert Verificator Checking Expert	G. Fioravanti	12.2011	<i>[Signature]</i>

SUBCONTRACTANT / SUBCONTRACTOR				
Aprobat Approved	Responsabil Subcontractant Subcontractant Responsible	A.Stanciu - Dinulescu	12.2011	<i>[Signature]</i>
Întocmit Elaborated	Proiectant Designer	D. Matei	12.2011	<i>[Signature]</i>

Reabilitarea liniei de cale ferata Braşov - Simeria, parte componentă a coridorului IV Pan European, pentru circulația trenurilor cu viteza maximă de 160 km/h,
Tronsonul : Braşov - Sighişoara
Rehabilitation of the railway line Braşov - Simeria, component Part of the IV Pan-European Corridor, for the trains circulation with maximum speed of 160 km/h,
Section : Braşov - Sighişoara

Proiect/Project
2004/RO/16/P/PA/003
Faza / Phase:
D.E. / E.D.

Denumire desen / Drawing Title :
**Tablou electric T.I.E. - Stația Sighişoara;
Sighişoara station - T.I.E. electric board**

Codificare / Codification System	Scara / Scale	LOT / LOT	Nr. / No 01 / 01
E A 5 1 0 1 E 2 1 B X I E 0 0 3 1 0 1 0 1			