

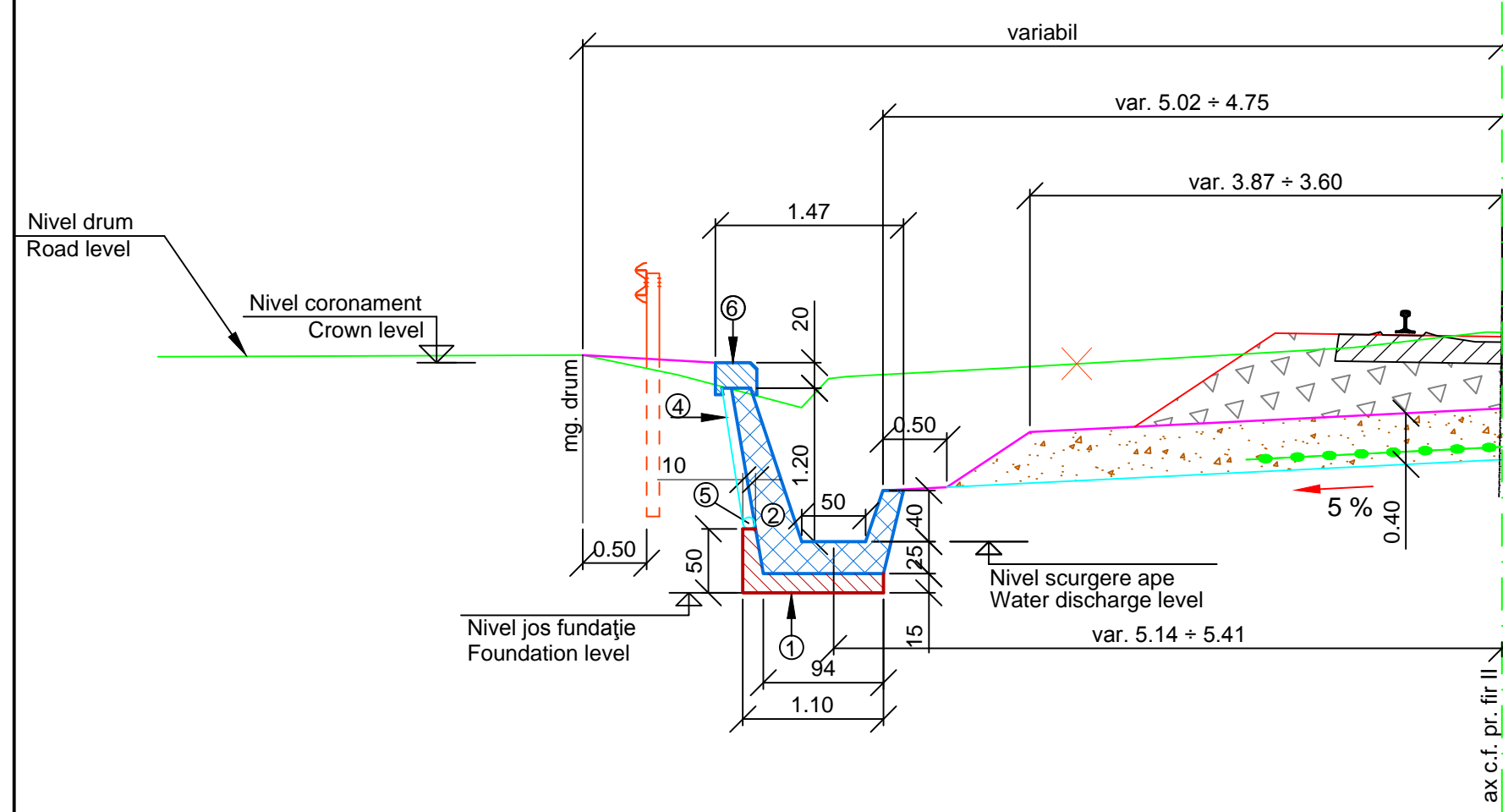
PROFIL TRANSVERSAL CARACTERISTIC
CHARACTERISTIC CROSS - SECTION

ȘANȚ RANFORSAT PREFABRICAT / PREFABRICATED REINFORCED DITCH

STÂNGA / LEFT

KM 266+858.47 ÷ KM 267+217.17, L=359m și KM 267+533,17 ÷ KM267+708.17, L=175m

Scara / Scale: 1:50



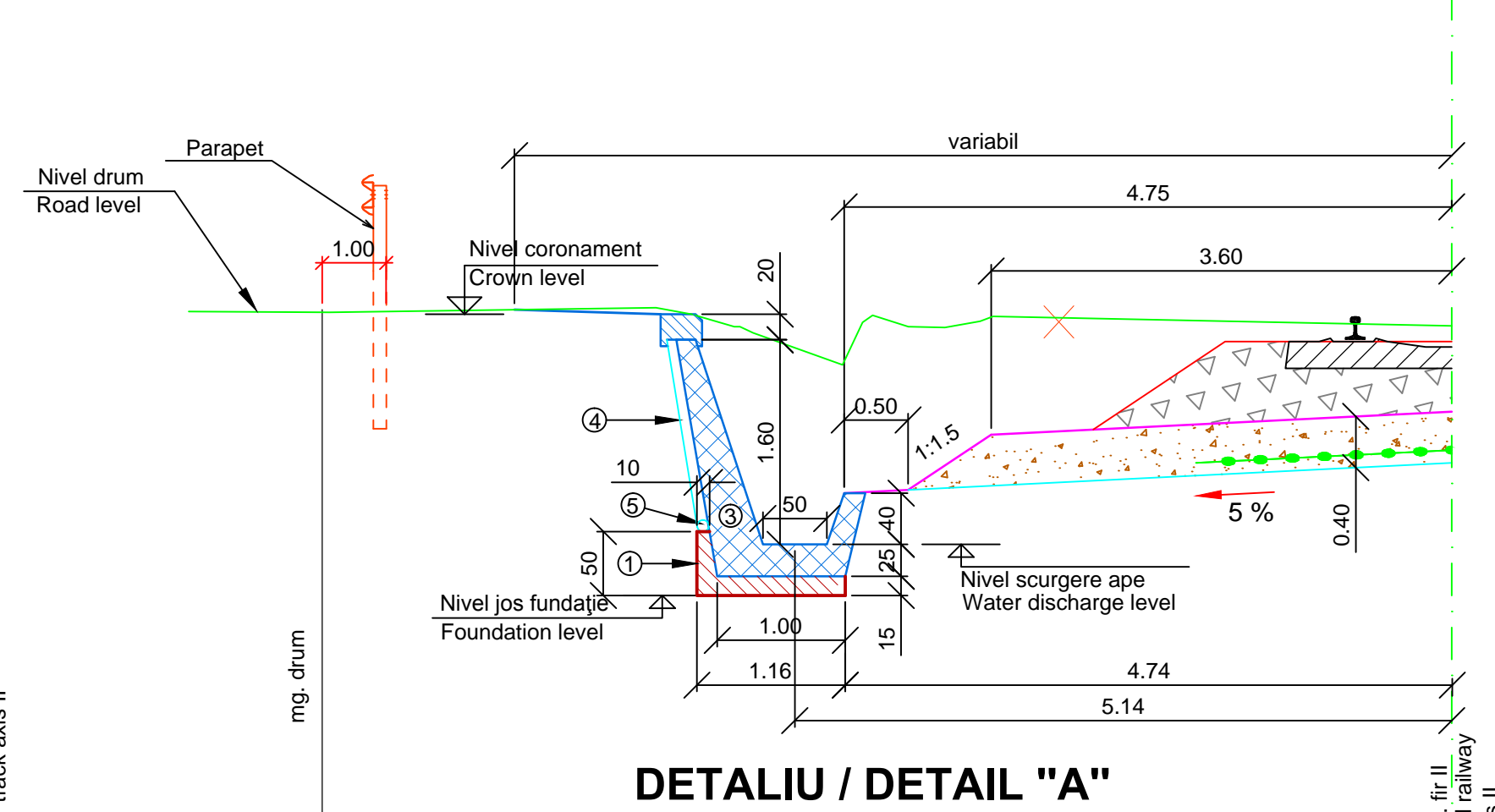
PROFIL TRANSVERSAL CARACTERISTIC
CHARACTERISTIC CROSS - SECTION

ȘANȚ RANFORSAT PREFABRICAT / PREFABRICATED REINFORCED DITCH

STÂNGA / LEFT

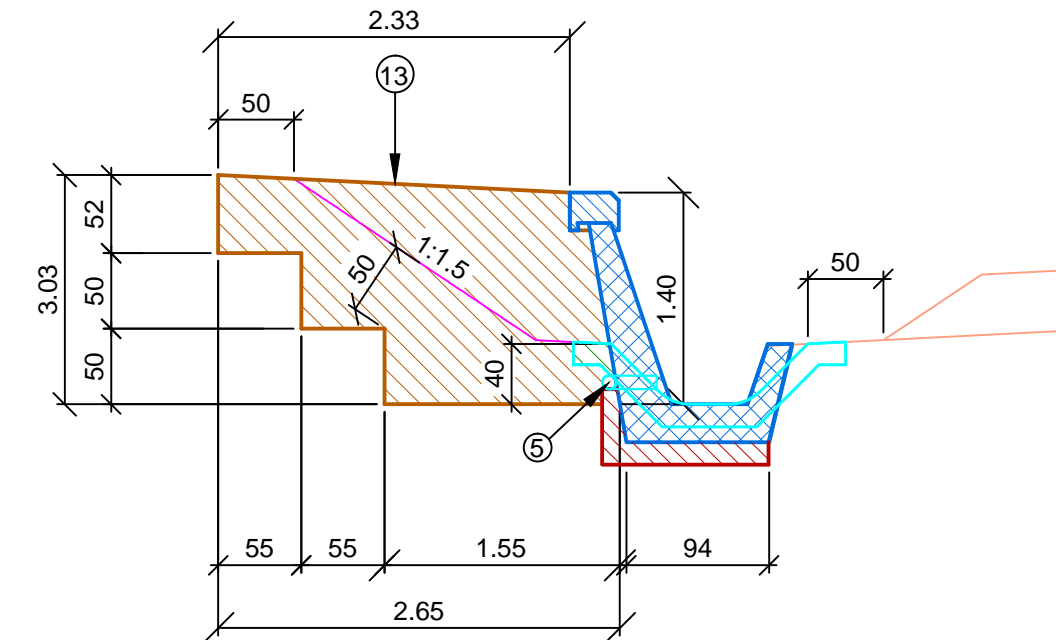
KM 267+225.17 ÷ KM 267+533.17, L=308m

Scara / Scale: 1:50



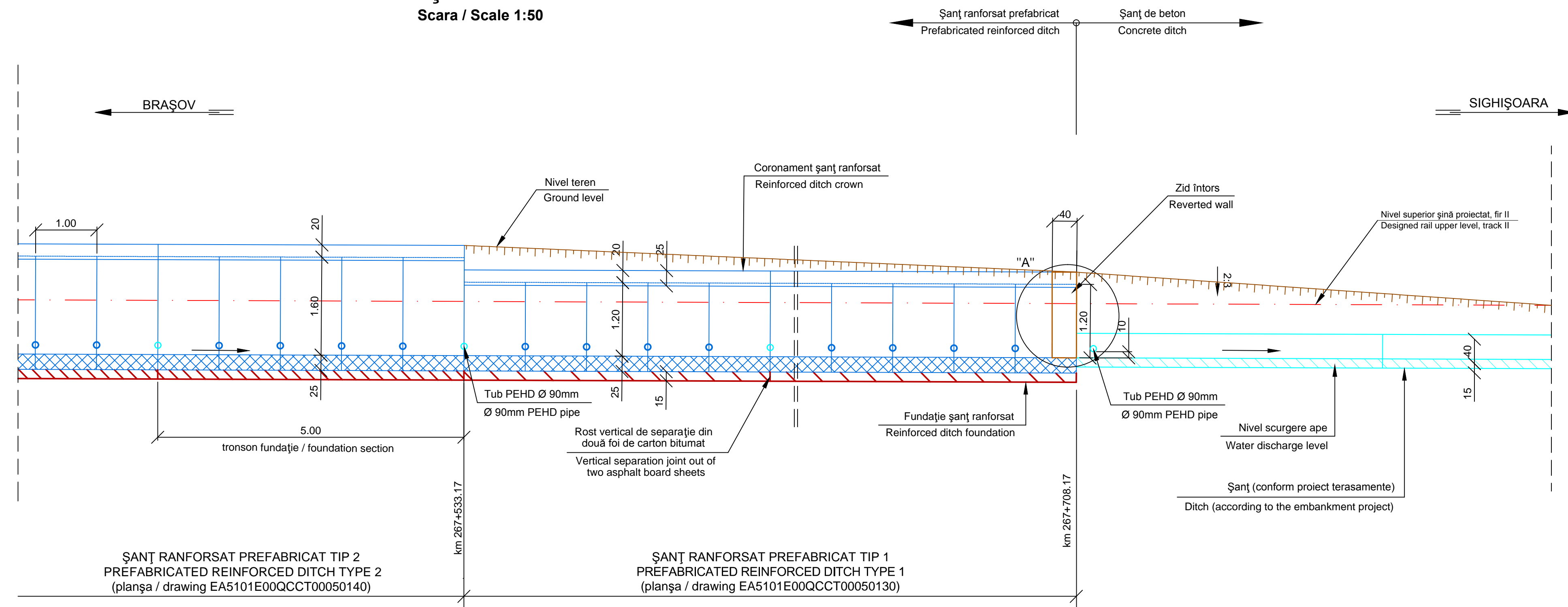
DETALIU / DETAIL "A"
ZID ÎNTORS / REVERTED WALL

Scara / Scale 1:50



ELEVAȚIE / ELEVATION

Scara / Scale 1:50



ȘANȚ RANFORSAT PREFABRICAT TIP 2
PREFABRICATED REINFORCED DITCH TYPE 2
(planșa / drawing EA5101E00QCCT00050140)

ȘANȚ RANFORSAT PREFABRICAT TIP 1
PREFABRICATED REINFORCED DITCH TYPE 1
(planșa / drawing EA5101E00QCCT00050130)

NOTĂ:
- Apelle colectate de geocompozitul drenant vor fi evacuate transversal, din 5 în 5m, în șanțul ranforsat prefabricat, prin tuburi PVC Ø 90mm.

NOTE:
- The water collected by the draining geo-composite will be discharged transversally, every 5 m, in the prefabricated reinforced ditch, through PVC tubes Ø 90mm.

LEGENDĂ:

- 1 Fundație din beton clasa C 8/10 de 15cm grosime.
- 2 Șanț ranforsat prefabricat tip 1 (plan EA5101E00QCCT0005013).
- 3 Șanț ranforsat prefabricat tip 2 (plan EA5101E00QCCT0005014).
- 4 Geocompozit drenant.
- 5 Tub PEHD Ø 90mm.
- 6 Coronament din beton monolit clasa C 25/30.

LEGEND:

- 1 15cm thick concrete foundation, class C 8/10.
- 2 Prefabricated reinforcing ditch type 1 (drawing EA5101E00QCCT0005013).
- 3 Prefabricated reinforcing ditch type 2 (drawing EA5101E00QCCT0005014).
- 4 Draining geo-composite.
- 5 Ø 90mm PEHD pipe.
- 6 C 25/30 class concrete monolith crown.

ECHIVALARE KILOMETRAJ
KILOMETER EQUIVALENCE

Fir I / Track I	Fir II / Track II
km 266+858.47	km 266+853.75
km 267+217.17	km 267+212.53
km 267+225.17	km 267+220.53
km 267+533.17	km 267+528.53
km 267+708.17	km 267+703.53

Indice Index	Data Date	Modificare Modification/Revision	Proiectant Designer	Aprobat Consultant Approved Consultant	Aprobat CFR Approved CFR
D					
C					
B					
A					



CLIENT / CLIENT
C.N.C.F. "C.F.R." - S.A.



Aprobat / Approved		Șef proiect / Project manager		R. Liuzza		Data Date		Semnătură / Signature	
Aprobat / Approved		Coordonator Secțiune 1 / Section 1 Coordinator		C. Gambelli		dec. 2011			
Verificat / Checked		Expert Cheie / Key Expert		A. Troiano		dec. 2011			

Aprobat / Approved		Responsabil Subconsultant / Subconsultant Responsible		A. Stanciu - Dinulescu		Data Date		Semnătură / Signature	
Intocmit / Elaborated		Proiectant / Designer		D. Zinculescu					

Reabilitarea liniei de cale ferată Brașov - Simeria, parte componentă a coridorului IV Pan European, pentru circulația trenurilor cu viteză maximă de 160 km/h,
Tronsonul : Brașov - Sighișoara
Rehabilitation of the railway line Brașov - Simeria, component Part of the IV Pan-European Corridor, for the trains circulation with maximum speed of 160 km/h,
Section : Brașov - Sighișoara

Denumire desen / Drawing Title :
Interval ARCHITA - VÂNĂTORI / ARCHITA - VÂNĂTORI Section
ȘANȚ RANFORSAT PREFABRICAT STÂNGA FIR II / PREFABRICATED REINFORCED DITCH LEFT TRACK II
Profil transversale caracteristice / Characteristic cross sections
KM 266+858.47 ÷ KM 267+708.17, L=842M

Codificare / Codification System	Scara / Scale 1:50	LOT / LOT	Nr. / No 01 / 01
E A 5 1 0 1 C 1 6 W B C T 0 0 6 5 0 0 1 1			

Fază
P.T
Fază
D.I