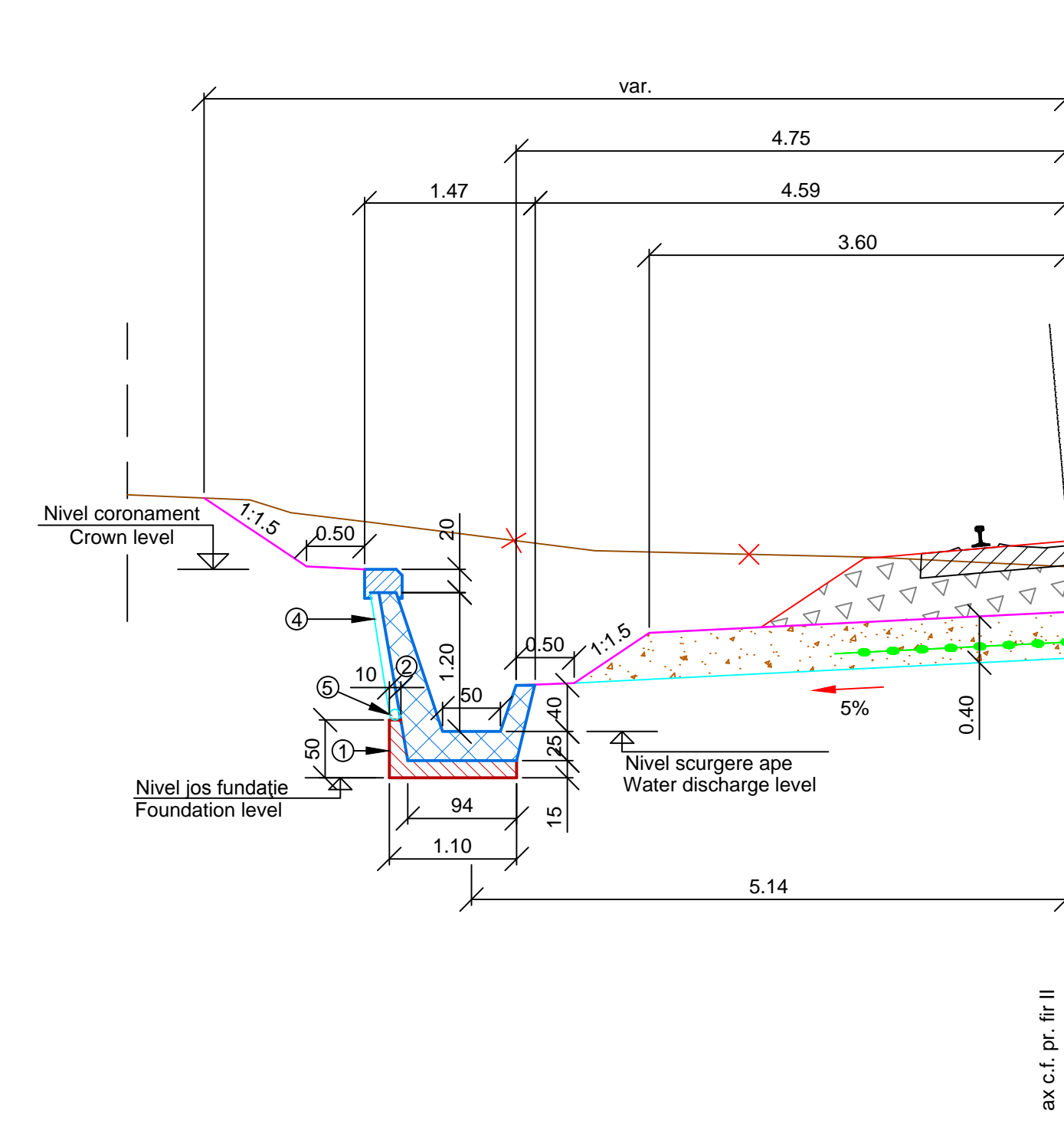


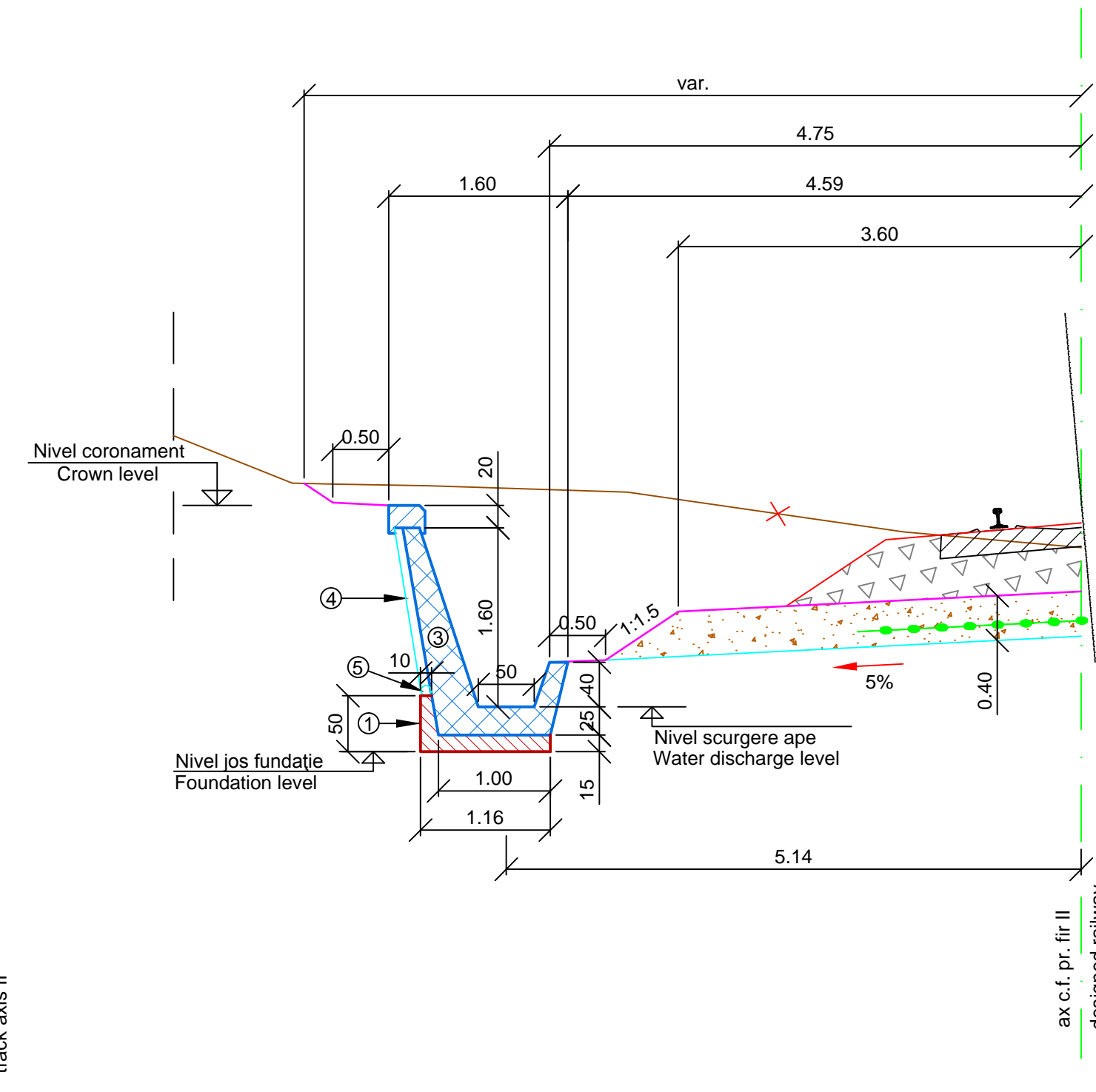
**PROFIL TRANSVERSAL CARACTERISTIC
CHARACTERISTIC CROSS - SECTION**

ȘANȚ RANFORSAT PREFABRICAT / PREFABRICATED REINFORCED DITCH
STÂNGA / LEFT
KM 239+073.80 + KM 239+083.80, L=10M ȘI / AND KM 239+163.80 + KM 239+173.80, L=10M
Scara / Scale: 1:50



**PROFIL TRANSVERSAL CARACTERISTIC
CHARACTERISTIC CROSS - SECTION**

ȘANȚ RANFORSAT PREFABRICAT / PREFABRICATED REINFORCED DITCH
STÂNGA / LEFT KM 239+083.80 + KM 239+163.80, L=80M
Scara / Scale: 1:50



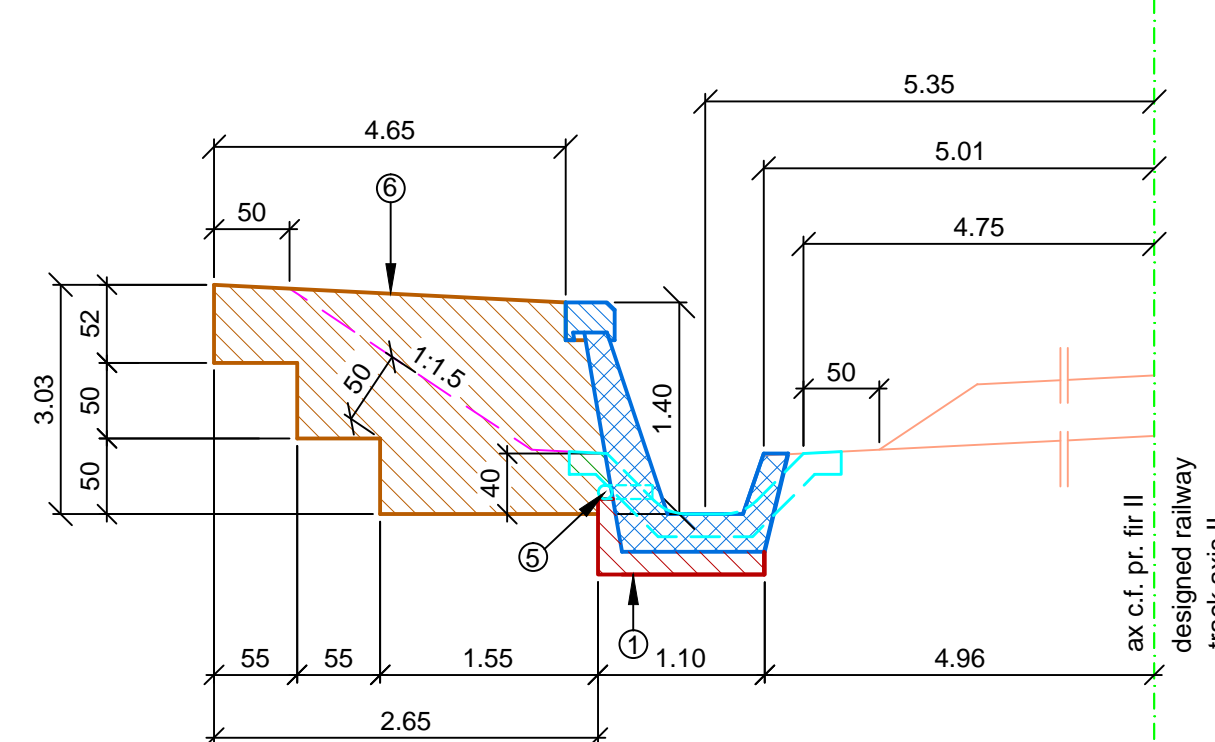
LEGENDĂ:

- 1 Fundație din beton clasa C 8/10 de 15cm grosime
- 2 Șanț ranforsat prefabricat tip 1 (plan EA5101E00QKCT0005013)
- 3 Șanț ranforsat prefabricat tip 2 (plan EA5101E00QKCT0005014)
- 4 Geocompozit drenant
- 5 Tub PEHD Ø 90mm
- 6 Zid întors

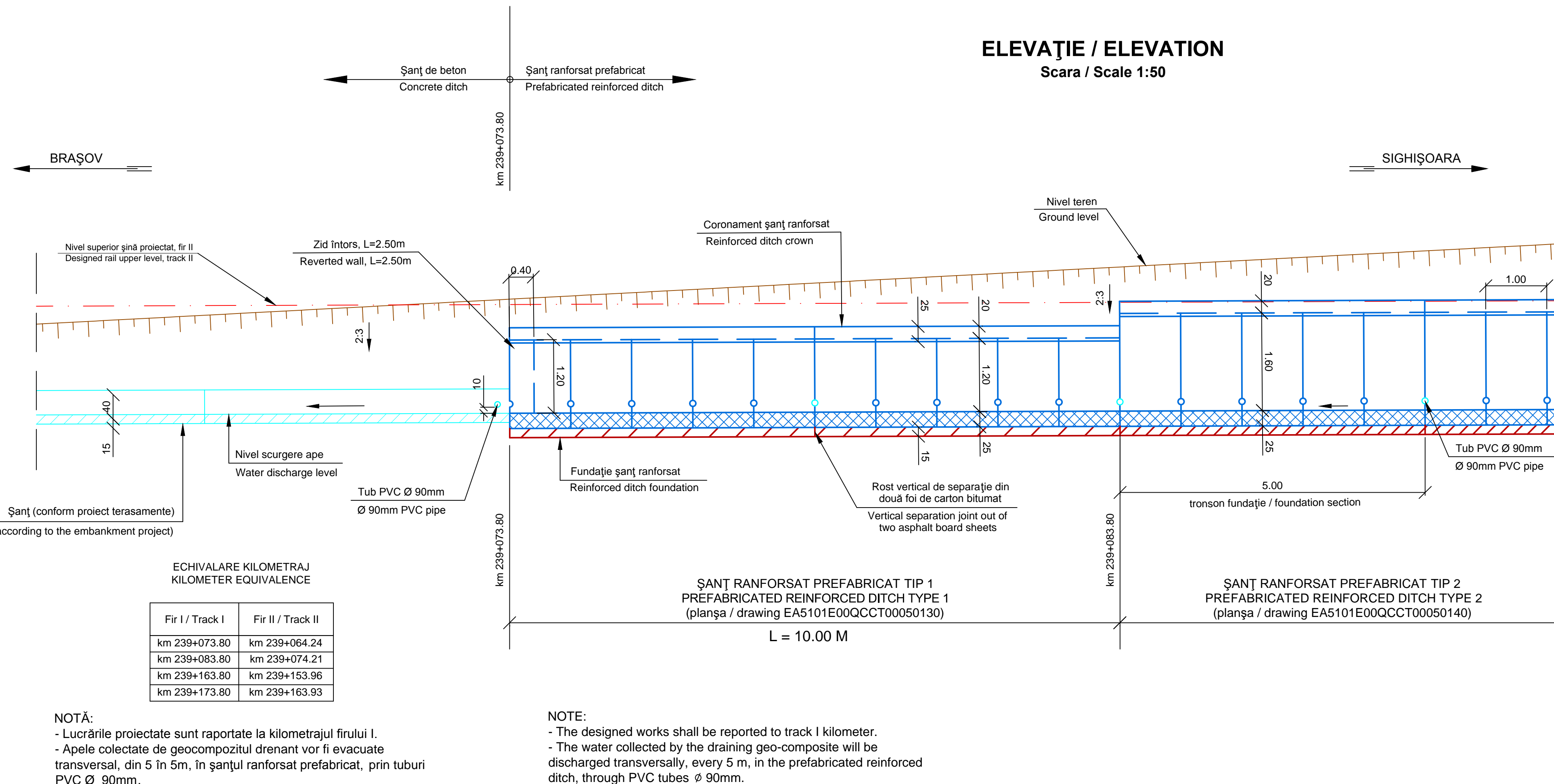
LEGEND:

- 1 15cm thick concrete foundation, class C 8/10
- 2 Prefabricated reinforcing ditch type 1 (drawing EA5101E00QCCT0005013)
- 3 Prefabricated reinforcing ditch type 2 (drawing EA5101E00QCCT0005014)
- 4 Draining geo-composite
- 5 Ø 90mm PEHD pipe
- 6 Reverted wall

**DETALIU ZID ÎNTORS
REVERTED WALL DETAIL**
Scara / Scale 1:50



ELEVAȚIE / ELEVATION
Scara / Scale 1:50



**ECHIVALARE KILOMETRAJ
KILOMETER EQUIVALENCE**

Fir I / Track I	Fir II / Track II
km 239+073.80	km 239+064.24
km 239+083.80	km 239+074.21
km 239+163.80	km 239+153.96
km 239+173.80	km 239+163.93

NOTĂ:

- Lucrările proiectate sunt raportate la kilometrajul firului I.
- Apele colectate de geocompozitul drenant vor fi evacuate transversal, din 5 în 5m, în șanțul ranforsat prefabricat, prin tuburi PVC Ø 90mm.

NOTE:

- The designed works shall be reported to track I kilometer.
- The water collected by the draining geo-composite will be discharged transversally, every 5 m, in the prefabricated reinforced ditch, through PVC tubes Ø 90mm.

D	C	B	A	Indice Index	Data Date	Modificare Modification/Revision	Proiectant Designer	Aprobat Consultant Approved Consultant	Aprobat CFR Approved CFR

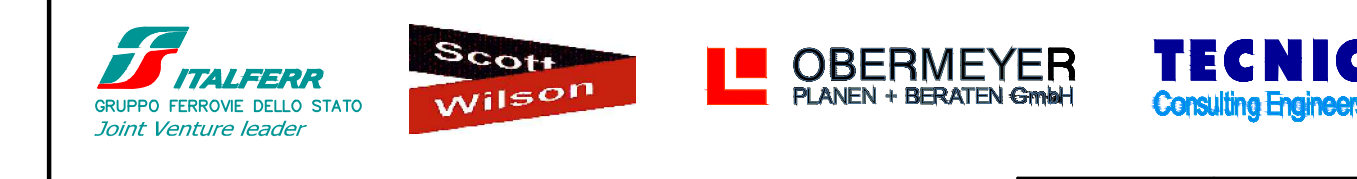


GUVERNUL ROMÂNIEI
ROMANIAN GOVERNMENT

PROIECT FINANȚAT DE UNIUNEA EUROPEANĂ
EUROPEAN UNION FINANCED PROJECT

CFR

C.N.C.F. "C.F.R." - S.A.



CONSULTANT / CONSULTANT

Aprobat Approved	Șef proiect Project manager	R. Liuzza	Data Date	Semnătură Signature
Aprobat Approved	Coordonator Section 1 Coordinator	C. Gambelli	dec. 2011	
Verificat Checked	Expert Cheie Key Expert	A. Troiano	dec. 2011	

SUBCONTRACTANT / SUBCONTRACTOR

Aprobat Approved	Responsabil Subconsultant Subconsultant Responsible	A. Stanciu - Dinulescu	Data Date	Semnătură Signature
Înlocuit Elaborated	Proiectant Designer	S. Enache		

Reabilitarea liniei de cale ferată Brașov - Simeria, parte componentă a coridorului IV Pan European, pentru circulația trenurilor cu viteză maximă de 160 km/h,
Tronsonul : Brașov - Sighișoara
Rehabilitation of the railway line Brașov - Simeria, component Part of the IV Pan-European Corridor, for the trains circulation with maximum speed of 160 km/h,
Section : Brașov - Sighișoara

Proiect/Project
2004/RO/16/P/PA/003
Faza / Phase:
P.Th. / T.D.

Denumire desen / Drawing Title :
Interval Cața - Archita / Cața - Archita Section
ȘANȚ RANFORSAT PREFABRICAT STÂNGA FIR II / PREFABRICATED REINFORCED DITCH LEFT TRACK II
Profil transversale caracteristice / Characteristic cross - sections
km 239+073.80 + km 239+173.80

Codificare / Codification System	Scara / Scale 1:50	LOT / LOT	Nr. / No 01 / 01
E A 5 1 0 1 C 1 4 W B C T 0 0 1 5 0 0 1 2			