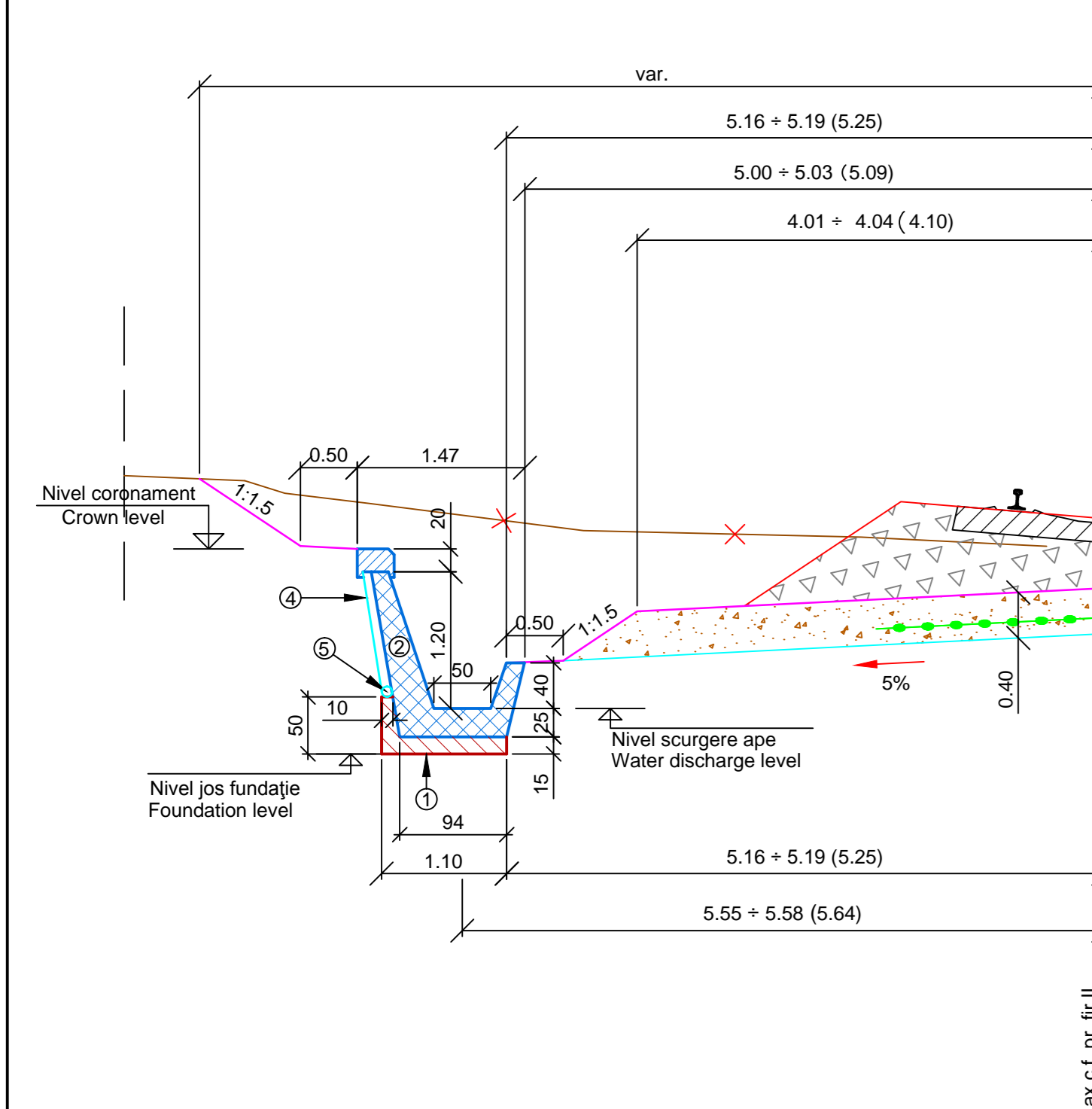


PROFIL TRANSVERSAL CARACTERISTIC
CHARACTERISTIC CROSS - SECTION

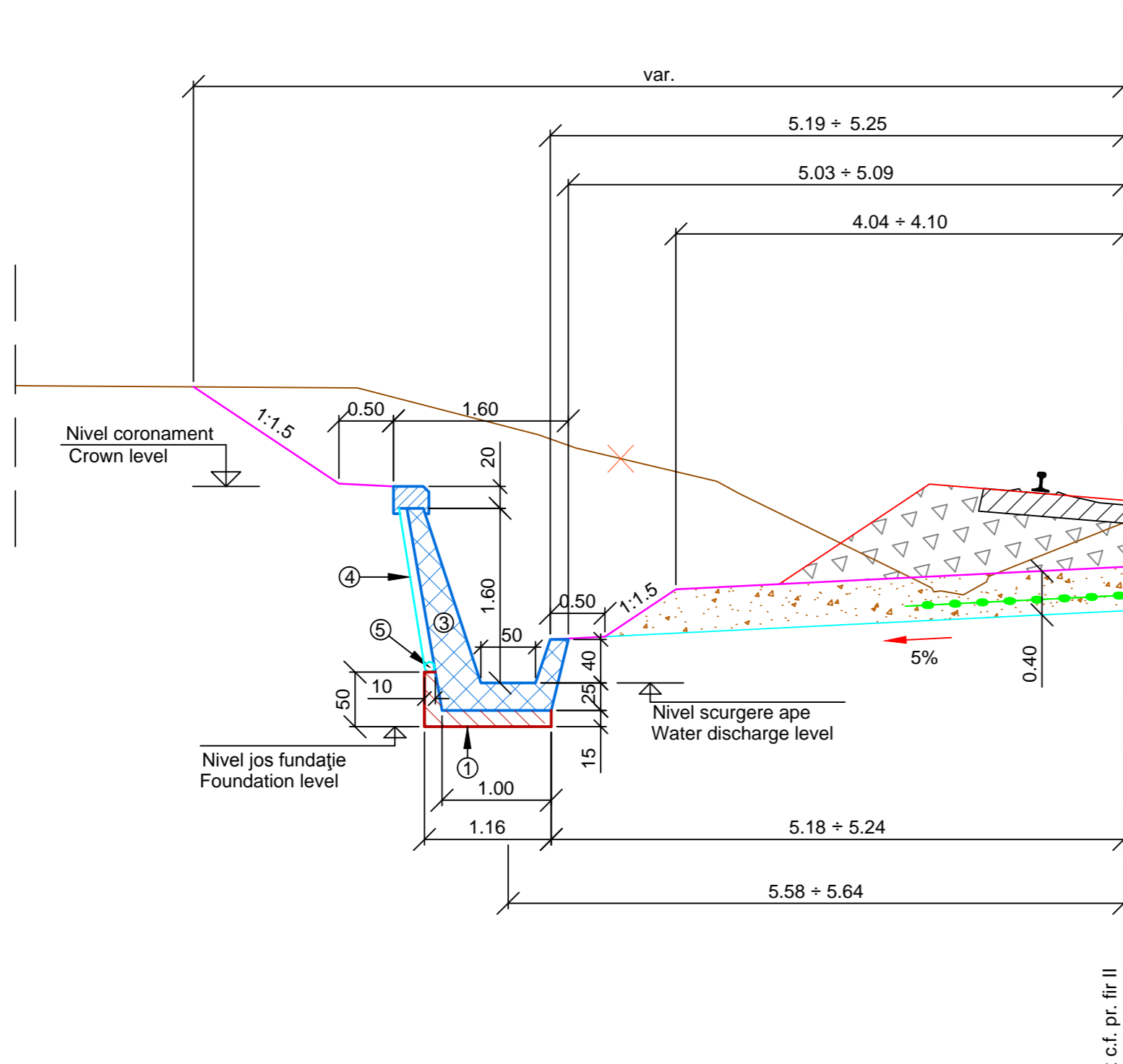
ȘANȚ RANFORSAT PREFABRICAT / PREFABRICATED REINFORCED DITCH
STÂNGA / LEFT
KM 243+058.80 ÷ KM 243+068.75, L=10M ȘI / AND KM 243+380.80 ÷ KM 243+390.75, L=10M
Scara / Scale: 1:50



ax c.f. pr. fir II
designed railway
track axis II

PROFIL TRANSVERSAL CARACTERISTIC
CHARACTERISTIC CROSS - SECTION

ȘANȚ RANFORSAT PREFABRICAT / PREFABRICATED REINFORCED DITCH
STÂNGA / LEFT KM 243+068.75 ÷ KM 243+380.80, L=314M
Scara / Scale: 1:50



ax c.f. pr. fir II
designed railway
track axis II

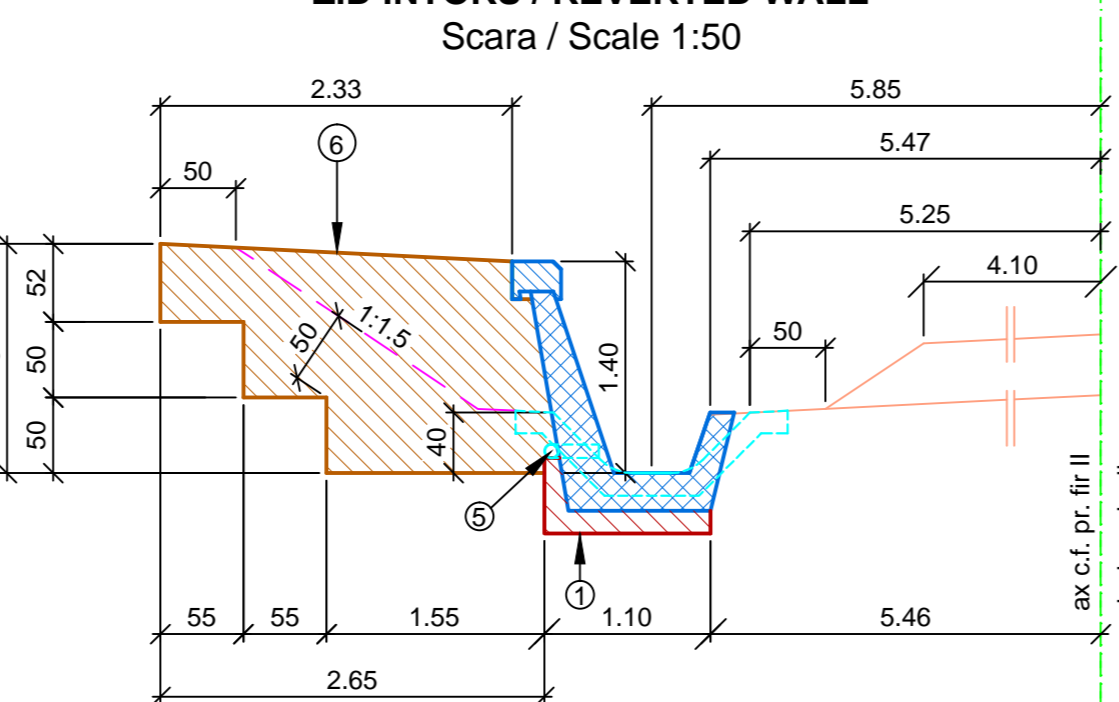
LEGENDĂ:

- 1 Fundație din beton clasa C 8/10 de 15cm grosime
- 2 Șanț ranforsat prefabricat tip 1 (plan EA5101E00QCCT0005013)
- 3 Șanț ranforsat prefabricat tip 2 (plan EA5101E00QCCT0005014)
- 4 Geocompozit drenant
- 5 Tub PEHD Ø 90mm
- 6 Zid întors

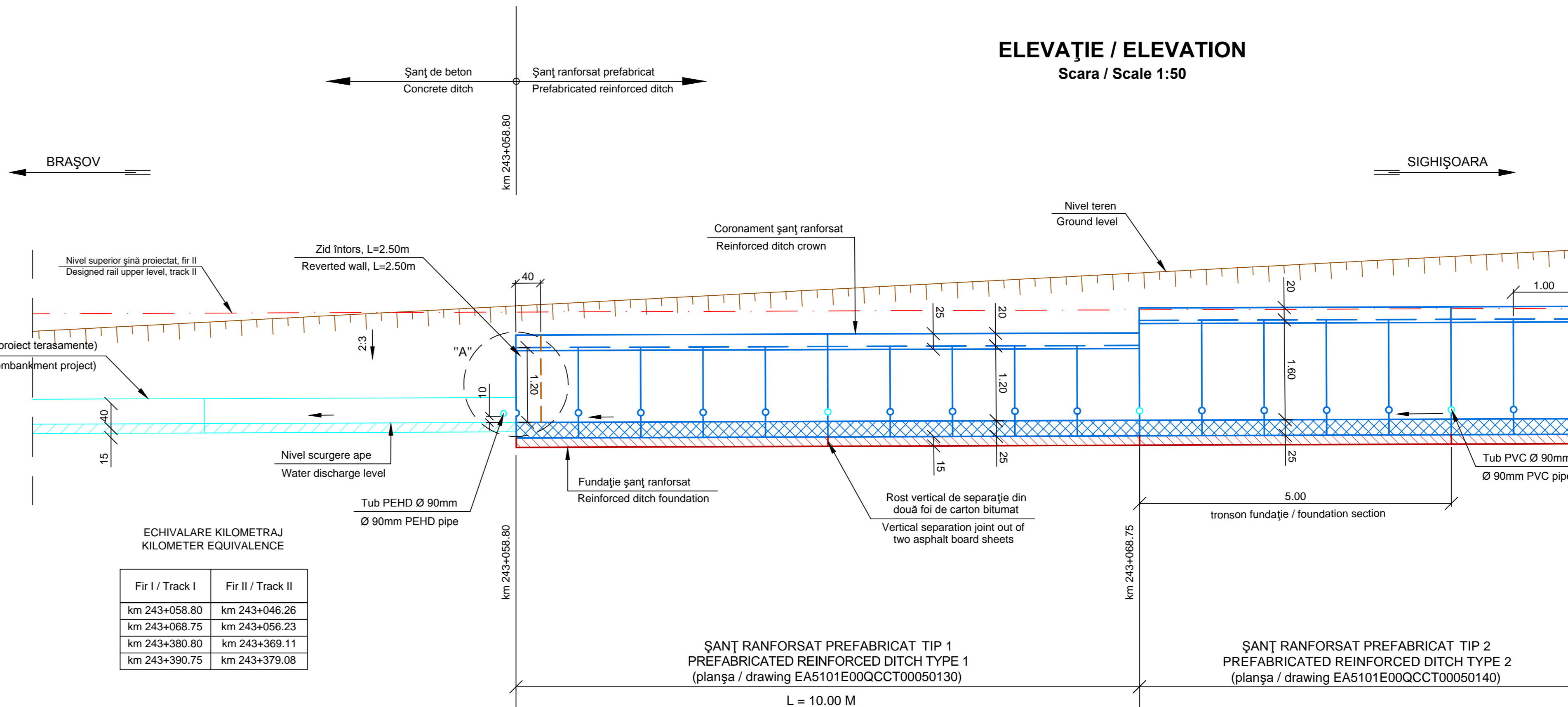
LEGEND:

- 1 15cm thick concrete foundation, class C 8/10
- 2 Prefabricated reinforcing ditch type 1 (drawing EA5101E00QCCT0005013)
- 3 Prefabricated reinforcing ditch type 2 (drawing EA5101E00QCCT0005014)
- 4 Draining geo-composite
- 5 Ø 90mm PEHD pipe
- 6 Reverted wall

DETALIU / DETAIL "A"
ZID ÎNTORS / REVERTED WALL



ax c.f. pr. fir II
designed railway
track axis II



NOTĂ:

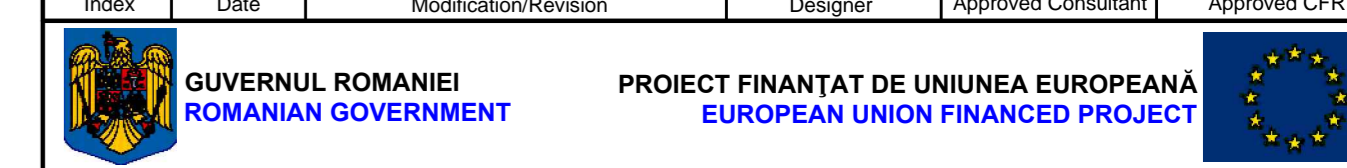
- Lucrările proiectate sunt raportate la kilometrajul firului I.
- Apele colectate de geocompozitul drenant vor fi evacuate transversal, din 5 în 5m, în șanțul ranforsat prefabricat, prin tuburi PVC Ø 90mm.

NOTE:

- The designed works shall be reported to track I kilometer.
- The water collected by the draining geo-composite will be discharged transversally, every 5 m, in the prefabricated reinforced ditch, through PVC tubes Ø 90mm.

ELEVAȚIE / ELEVATION
Scara / Scale 1:50

D					
C					
B					
A					
Indice Index	Data Date	Modificare Modification/Revision	Proiectant Designer	Aprobat Consultant Approved Consultant	Aprobat CFR Approved CFR



CLIENT / CLIENT
CFR
C.N.C.F. "C.F.R." - S.A.



CONSULTANT / CONSULTANT

Aprobat Approved	Șef proiect Project manager	R. Liuzza	Data Date	Semnătură Signature
Aprobat Approved	Coordonator Secțiune 1 Section 1 Coordinator	C. Gambelli	dec. 2011	
Verificat Checked	Expert Cheie Key Expert	A. Troiano	dec. 2011	

SUBCONTRACTANT / SUBCONTRACTOR

Aprobat Approved	Responsabil Subcontractant Subcontractant Responsible	A. Stanciu - Dinulescu		
Intocmit Elaborated	Proiectant Designer	S. Enache		

Reabilitarea liniei de cale ferată Brașov - Simeria, parte componentă a coridorului IV Pan European, pentru circulația trenurilor cu viteză maximă de 160 km/h,
Tronsoanel: Brașov - Sighișoara
Rehabilitation of the railway line Brașov - Simeria, component Part of the IV Pan-European Corridor, for the trains circulation with maximum speed of 160 km/h,
Section: Brașov - Sighișoara

Proiect/Project
2004/RO/16/PA/003
Faza / Phase:
P.Th. / T.D.

Denumire desen / Drawing Title :
Interval Cața - Archita / Cața - Archita Section
ȘANȚ RANFORSAT PREFABRICAT STÂNGA FIR II / PREFABRICATED REINFORCED DITCH LEFT TRACK II
Profile transversale caracteristice / Characteristic cross - sections
km 243+058.80 ÷ km 243+390.75

Codificare / Codification System	Scara / Scale 1:50	LOT / LOT	Nr. / No 01/01
E A 5 1	0 1	C	1 4
W B	C T	0 0	7 5
0 0 1	2		