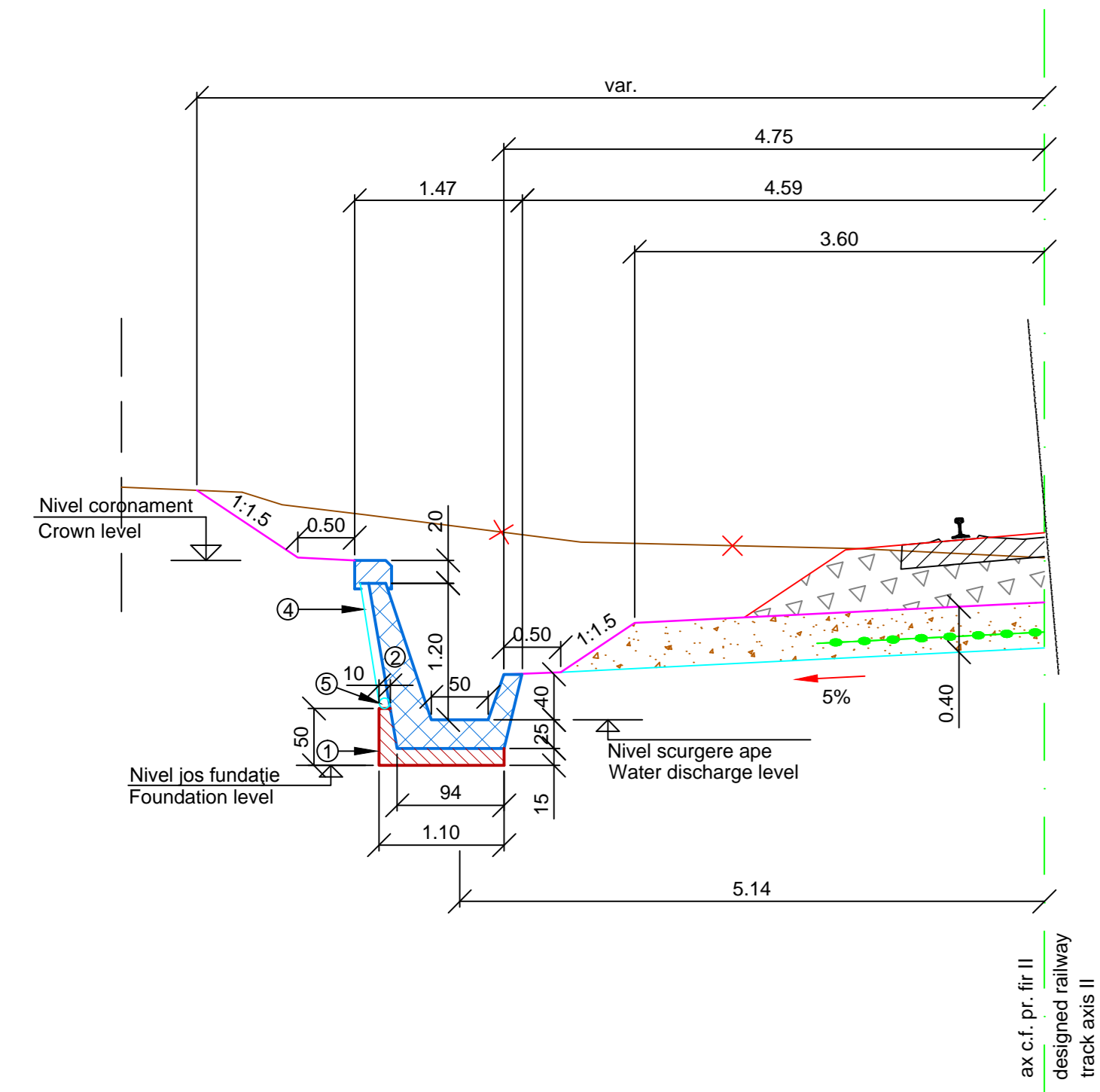
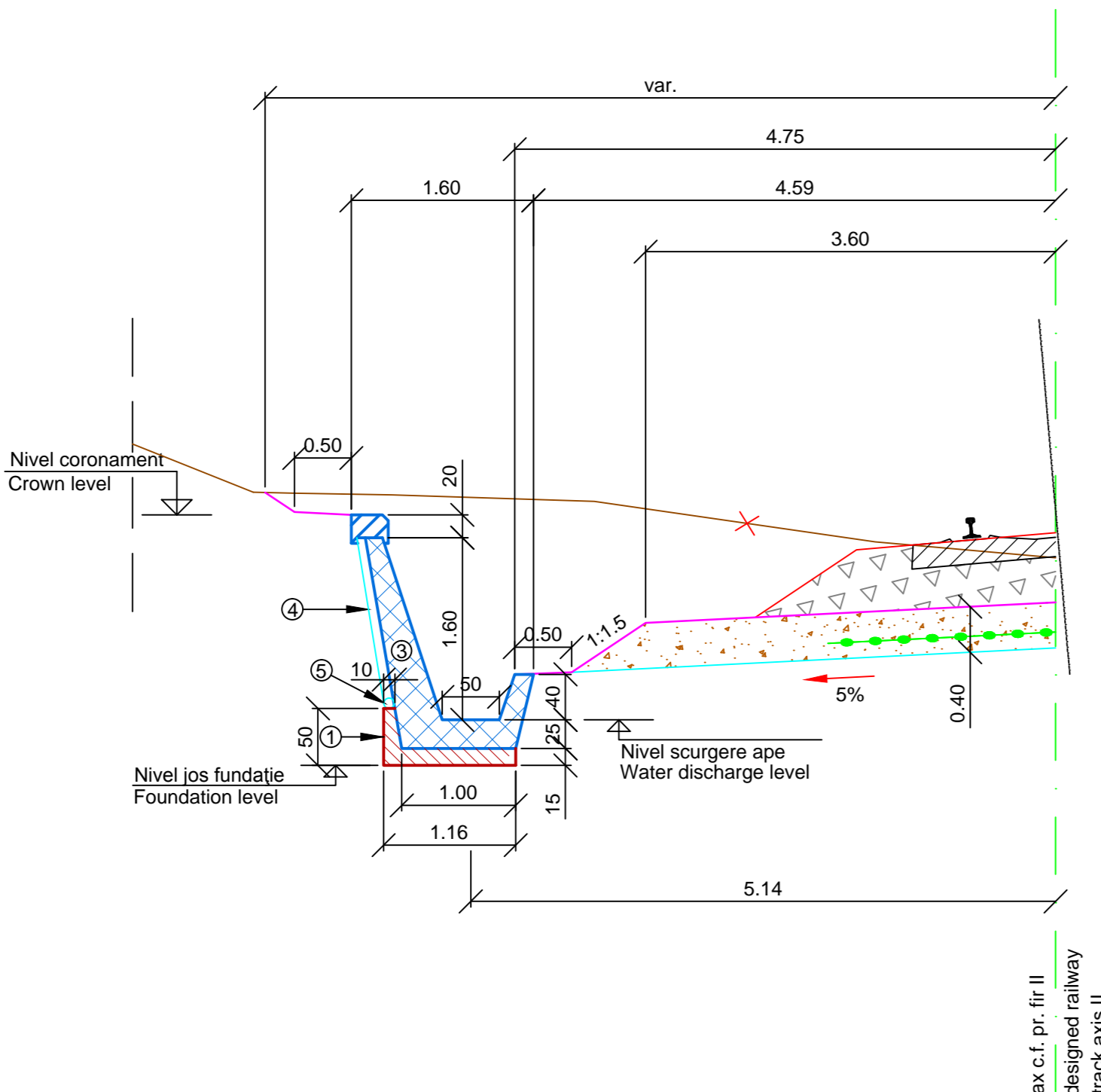


PROFIL TRANSVERSAL CARACTERISTIC
CHARACTERISTIC CROSS - SECTION
 ȘANȚ RANFORSAT PREFABRICAT / PREFABRICATED REINFORCED DITCH
 STÂNGA FIR II / LEFT TRACK II
 KM 241+963.80 + KM 241+973.80, L=10M
 Scara / Scale: 1:50



PROFIL TRANSVERSAL CARACTERISTIC
CHARACTERISTIC CROSS - SECTION
 ȘANȚ RANFORSAT PREFABRICAT / PREFABRICATED REINFORCED DITCH
 STÂNGA FIR II / LEFT TRACK II
 KM 241+769.80 + KM 241+963.80, L=194M
 Scara / Scale: 1:50



- LEGENDĂ:**
- 1 Fundație din beton clasa C 8/10 de 15cm grosime
 - 2 Șanț ranforsat prefabricat tip 1 (plan EA5101E00QCCT0005013)
 - 3 Șanț ranforsat prefabricat tip 2 (plan EA5101E00QCCT0005014)
 - 4 Geocompozit drenant
 - 5 Tub PEHD Ø 90mm

- LEGEND:**
- 1 15cm thick concrete foundation, class C 8/10
 - 2 Prefabricated reinforcing ditch type 1 (drawing EA5101E00QCCT0005013)
 - 3 Prefabricated reinforcing ditch type 2 (drawing EA5101E00QCCT0005014)
 - 4 Draining geo-composite
 - 5 Ø 90mm PEHD pipe

ECHIVALARE KILOMETRAJ
KILOMETER EQUIVALENCE

Fir I / Track I	Fir II / Track II
km 241+769.80	km 241+758.22
km 241+963.80	km 241+952.22
km 241+973.80	km 241+962.22

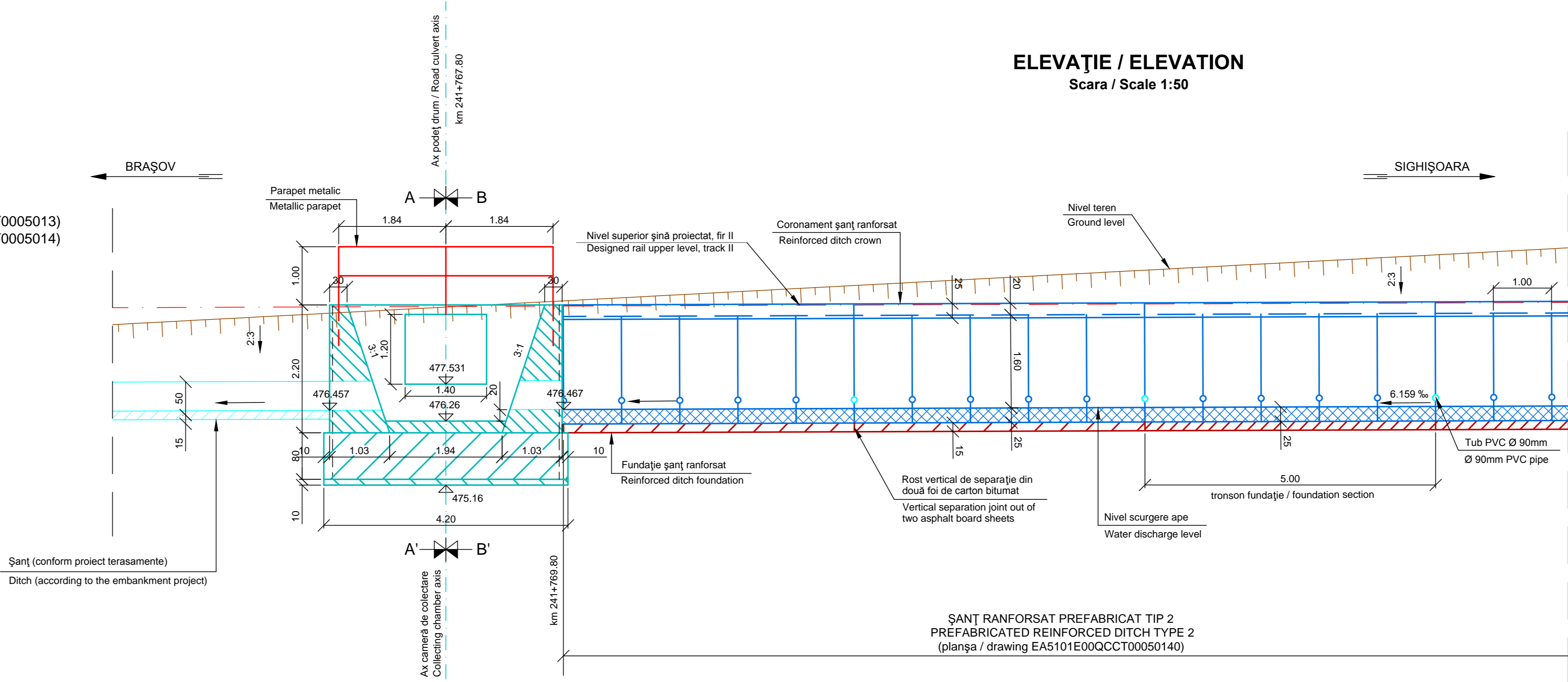
NOTĂ:

- Lucrările proiectate sunt raportate la kilometrajul firului I.
- Apele colectate de geocompozitul drenant vor fi evacuate transversal, din 5 în 5m, în șanțul ranforsat prefabricat, prin tuburi PVC Ø 90mm.

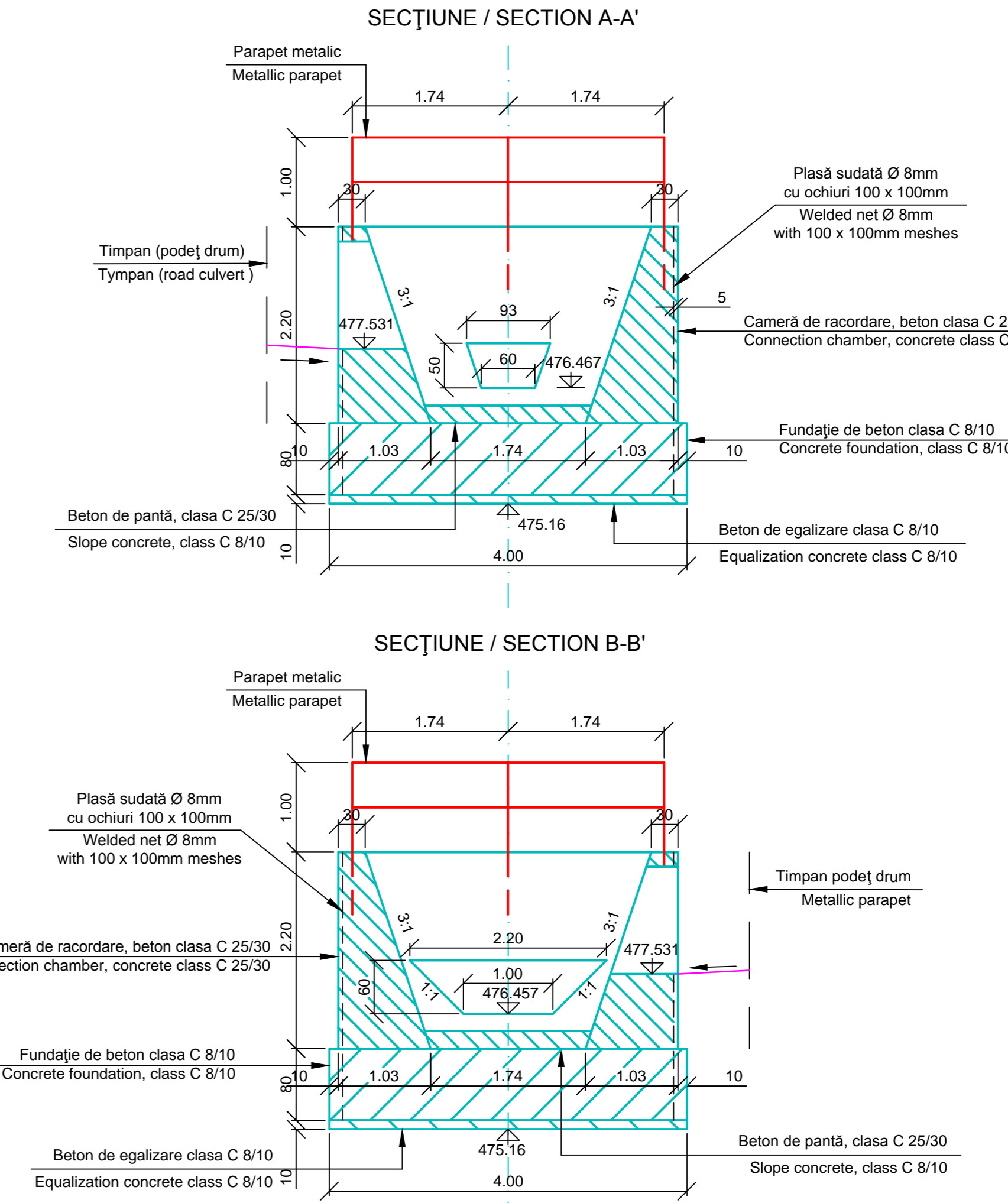
NOTE:

- The designed works shall be reported to track I kilometer.
- The water collected by the draining geo-composite will be discharged transversally, every 5 m, in the prefabricated reinforced ditch, through PVC tubes Ø 90mm.

ELEVAȚIE / ELEVATION
 Scara / Scale 1:50



ȘANȚ RANFORSAT PREFABRICAT TIP 2
PREFABRICATED REINFORCED DITCH TYPE 2
 (planșa / drawing EA5101E00QCCT00050140)



Index	Date	Modification	Projectant	Approved Consultant	Approved CFR
D					
C					
B					
A					

GUVERNUL ROMÂNIEI / ROMANIAN GOVERNMENT
 PROIECT FINANȚAT DE UNIUNEA EUROPEANĂ / EUROPEAN UNION FINANCED PROJECT

CFR
 C.N.C.F. "C.F.R." - S.A.

CLIENT / CLIENT

ITALFER, Scott Wilson, OBERMEYER, TECNIC

CONSULTANT / CONSULTANT

Approved	Set project	Date	Semnătură
Approved	Project manager	dec. 2011	[Signature]
Approved	Coordinator Section 1	dec. 2011	[Signature]
Verified	Expert Chief	dec. 2011	[Signature]

SUBCONTRACTANT / SUBCONTRACTOR

Approved	Responsabil Subcontractant	Date	Semnătură
Approved	Subcontractant Responsible		[Signature]
Elaborated	Designer		

Reabilitarea liniei de cale ferată Brașov - Simeria, parte componentă a coridorului IV Pan European, pentru circulația trenurilor cu viteză maximă de 160 km/h,
Tronsoanel: Brașov - Sighișoara
 Rehabilitation of the railway line Brașov - Simeria, component Part of the IV Pan-European Corridor, for the trains circulation with maximum speed of 160 km/h,
Section: Brașov - Sighișoara

Project/Project: 2004/RO/16/PA/003
 Faza / Phase: P.Th. / T.D.

Denumire desen / Drawing Title:
 Interval Cața - Archita / Cața - Archita Section
 ȘANȚ RANFORSAT PREFABRICAT STÂNGA FIR II / PREFABRICATED REINFORCED DITCH LEFT TRACK II
 Profile transversale caracteristice + detalii / Characteristic cross - sections + details
 km 241+769.80 + km 241+973.80

Codificare / Codification System	Scara / Scale	LOT / LOT	Nr. / No
EA5101E00QCCT00050140	1:50		01/01