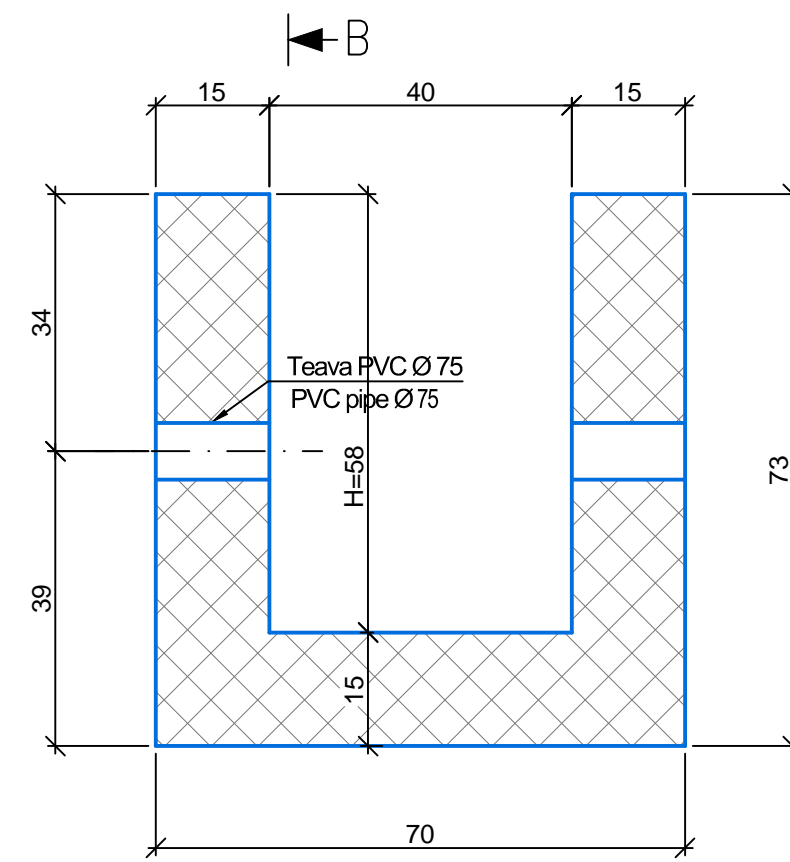
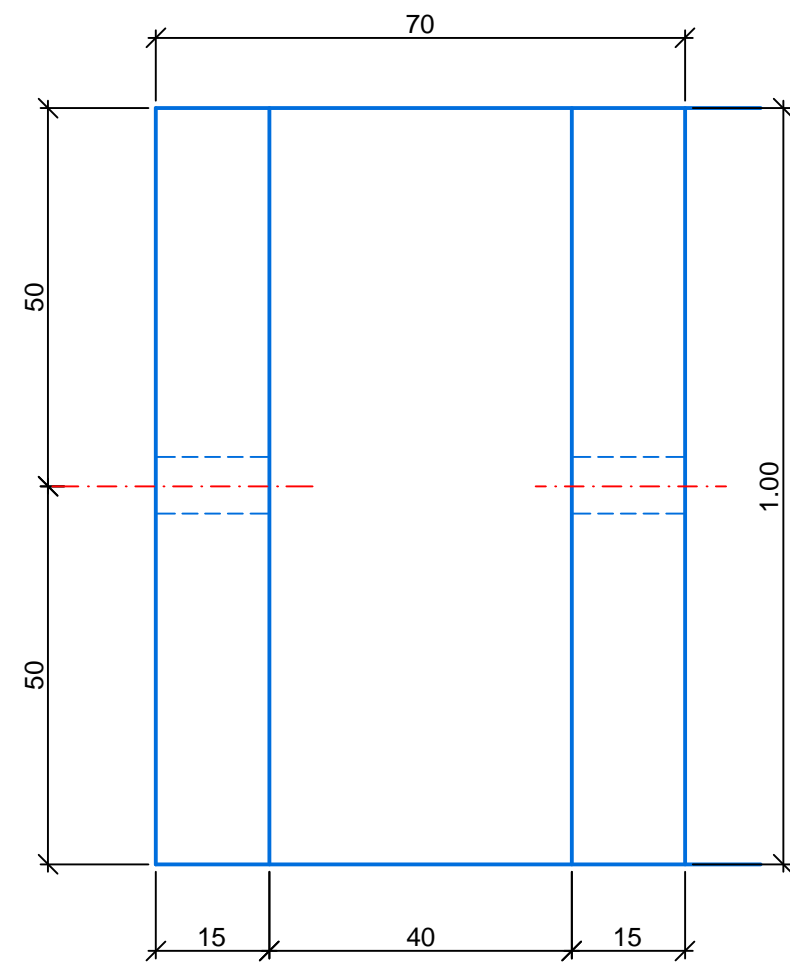


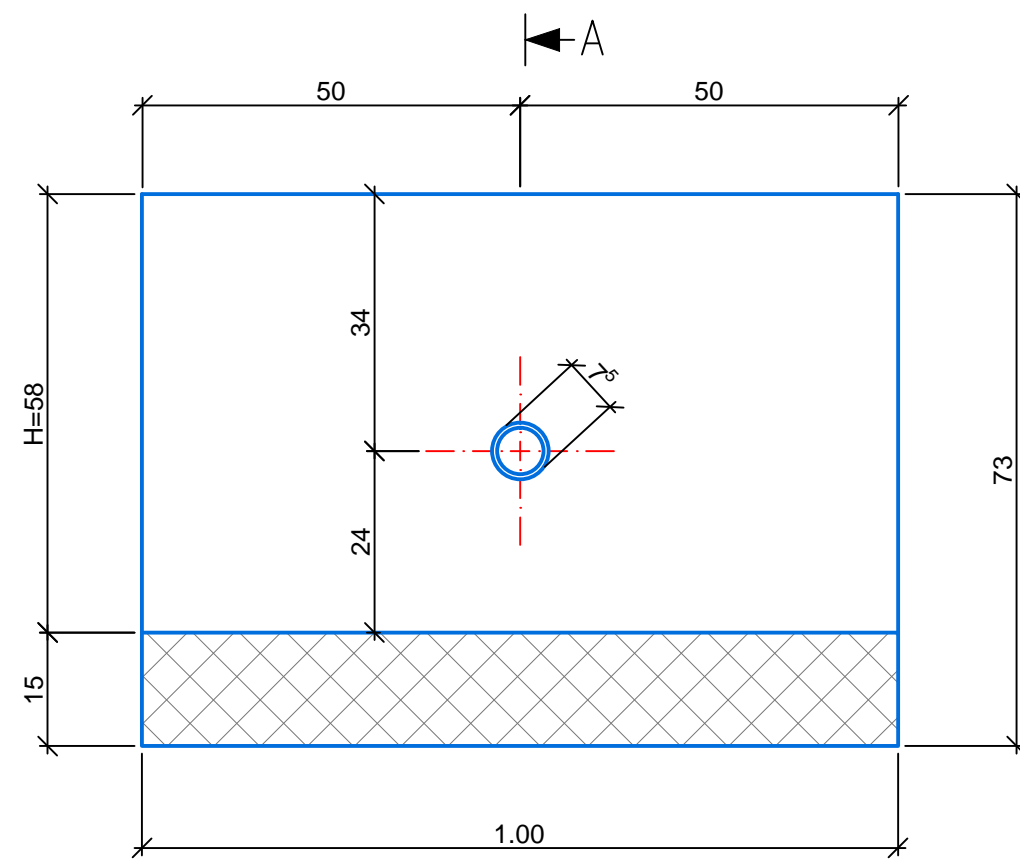
SECȚIUNE / SECTION A-A'



VEDERE ÎN PLAN / PLAN VIEW



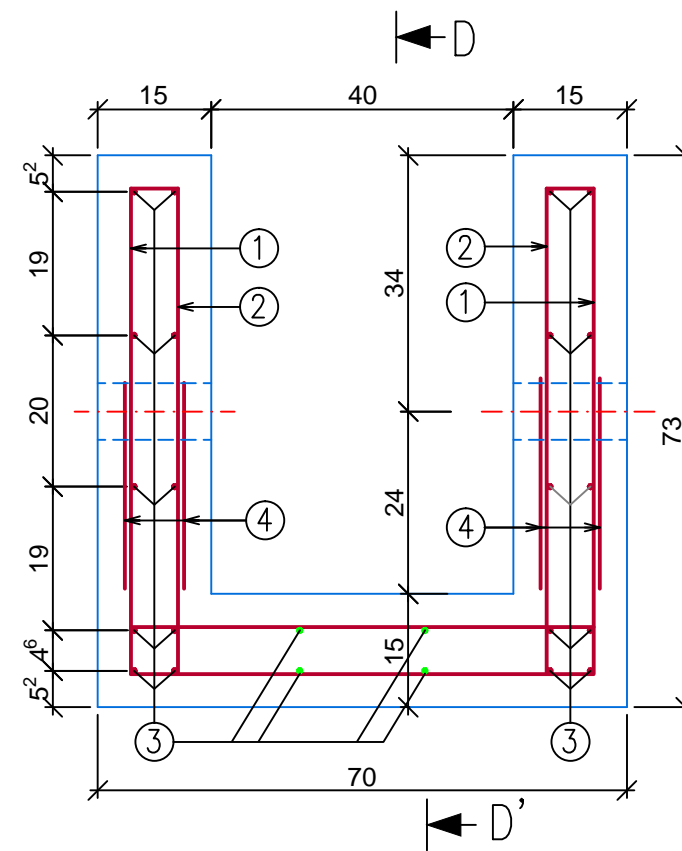
SECȚIUNE / SECTION B-B'



EXTRAS DE ARMĂTURĂ  
LIST OF THE REINFORCING BARS

MARCA TYPE	Ø	BUC. PIECE	L/BUC L/PIECE	L/Ø PC 52 Ø 8
1	8	6	2.15	12.90
2	8	6	2.15	12.90
3	8	24	1.00	24.00
4	8	4	0.80	3.20
TOTAL LUNGIMI / Ø TOTAL LENGTHS / Ø				53.00
GREUTATE / Ø / M.L. WEIGHT / Ø / M.L.				0.395
TOTAL GREUTATE TOTAL WEIGHT				21.00 KG

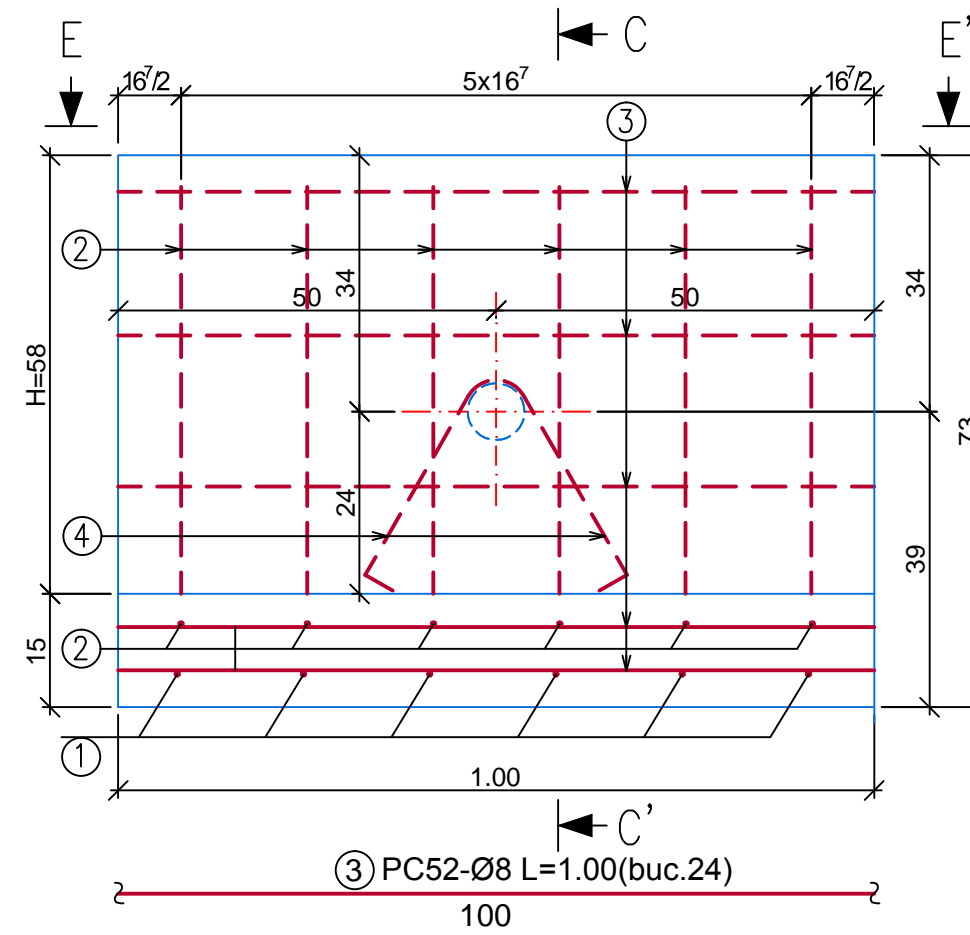
SECȚIUNE / SECTION C-C'



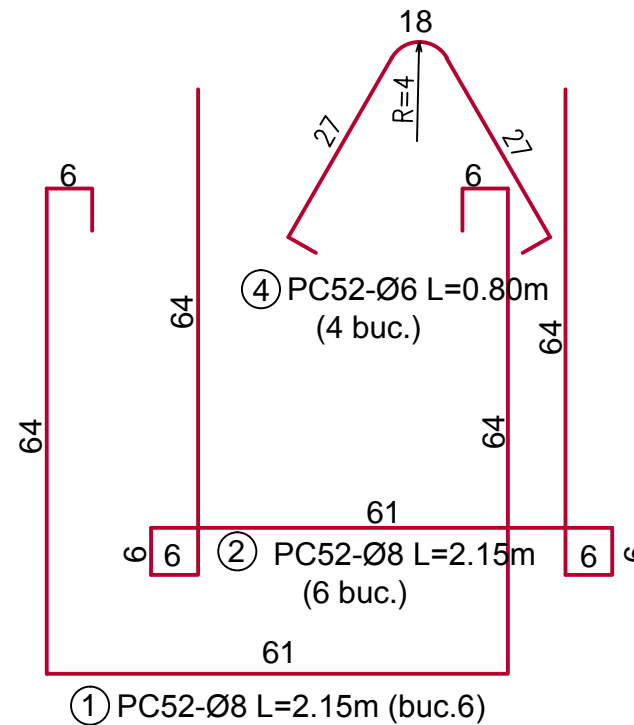
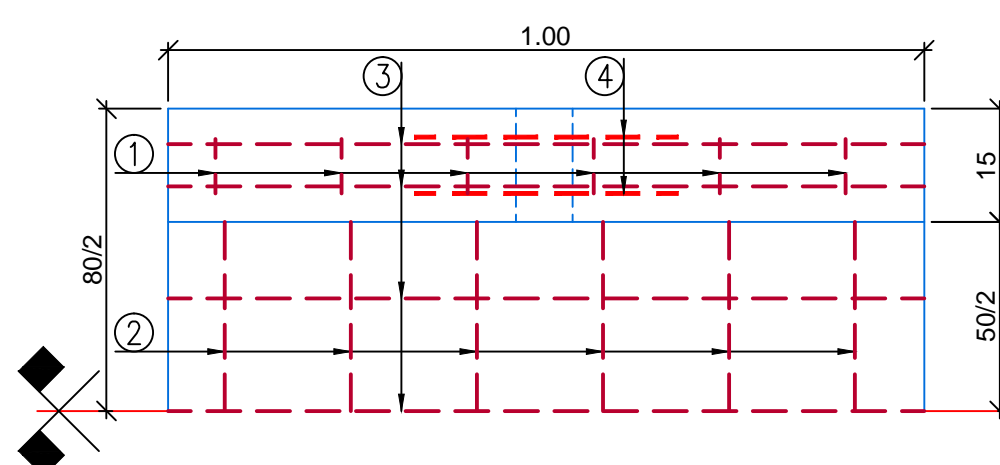
PLAN ARMARE / REINFORCEMENT

Scara 1:10

SECȚIUNE / SECTION D-D'



VEDERE / VIEW E-E'



**RIGOLĂ PREFABRICATĂ H = 0,58M, LĂȚIME FUND 0,40M;  
PREFABRICATED GUTTER H = 0.58M, 0.40M BOTTOM WIDTH  
PLAN COFRAJ ȘI DETALII DE ARMARE;  
FORMWORK PLAN AND REINFORCING BARS DETAILS**

**CARACTERISTICI PENTRU UN PREFABRICAT:**

- VOLUM BETON: 0,28 m<sup>3</sup>/ buc;
- BETON ARMAT C 25/30 - S3 - P8 - G100 - EN 206-1 - CEM II/A-S 32,5N - 0/16;
- ARMĂTURI PC 52 Ø 8mm: 21.00 kg/buc;
- GREUTATE: 0,74 t/buc;
- GROSIMEA STRATULUI DE ACOPERIRE: 4 cm

**NOTA:**

- Capacul pentru acoperirea rigolei este dat în planul EA5101E00QKCT000X0120.
- Găurile circulare Ø 7.5cm din pereții laterali ai rigolei servesc pentru accesul apei și pentru manipulare.

**CHARACTERISTICS FOR ONE PREFABRICAT:**

- CONCRETE VOLUM: 0,28 m<sup>3</sup>/ buc;
- REINFORCED CONCRETE: C 25/30 - S3 - P8 - G100 - EN 206-1 - CEM II/A-S 32,5N - 0/16;
- REINFORCED BARS PC 52 Ø 8mm: 21.00 kg/buc;
- WEIGHT: 0,74 t/buc;
- THE THICKNESS OF THE COVERING LAYER: 4 cm

**NOTA:**

- The lid to cover the gutter is presented in plan EA5101E00QKCT000X0120.
- The circular holes Ø 7.5cm in the lateral walls of the gutter are used for water acces and directing.

D					
C					
B					
A					
Index	Data	Modificare	Proiectant	Aprobat Consultant	Aprobat CFR
		Modification/Revision	Designer	Approved Consultant	Approved CFR

GVERNUL ROMANIEI  
ROMANIAN GOVERNMENT

PROIECT FINANȚAT DE UNIUNEA EUROPEANĂ  
EUROPEAN UNION FINANCED PROJECT



C.N.C.F. "C.F.R." - S.A.

CLIENT / CLIENT

ITALFERR GRUPPO FERROVIE DELLO STATO Joint Venture leader

Scott Wilson

OBERMEYER PLANEN + BERATEN GmbH

TECNIC Consulting Engineers

CONSULTANT / CONSULTANT

Aprobat Approved	Sef proiect Project manager	R. Liuzza	Data Date	Semnătură Signature
Aprobat Approved	Coordonator Secțiune 1 Section 1 Coordinator	C. Gambelli	dec. 2011	
Verificat Checked	Expert Cheie Key Expert	A. Troiano	dec. 2011	

SUBCONTRACTANT / SUBCONTRACTOR

Aprobat Approved	Responsabil Subconsultant Subconsultant Responsible	A. Stanciu - Dinulescu		
Intocmit Elaborated	Proiectant Designer	S. Enache		

Reabilitarea liniei de cale ferata Braşov - Simeria, parte componentă a coridorului IV Pan European, pentru circulația trenurilor cu viteza maximă de 160 km/h,  
Tronsonul : Braşov - Sighişoara  
Rehabilitation of the railway line Braşov - Simeria, component Part of the IV Pan-European Corridor, for the trains circulation with maximum speed of 160 km/h,  
Section : Braşov - Sighişoara

Proiect/Project  
2004/RO/16/PPA/003  
Faza / Phase:

Denumire desen / Drawing Title :  
Rigolă prefabricată tip 7 / Prefabricated gutter type 7  
Plan cofraj și detalii de armare / Formwork plan and reinforcing bars details

Codificare / Codification System	Scara / Scale 1:10	LOT / LOT	Nr. / No 01 / 01
E A 5 1 0 1 E 0 0 Q K C T 0 0 0 X 0 1 1 0			