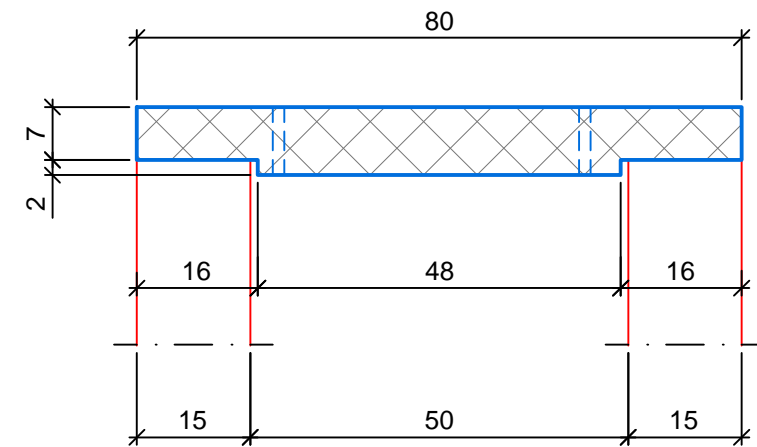
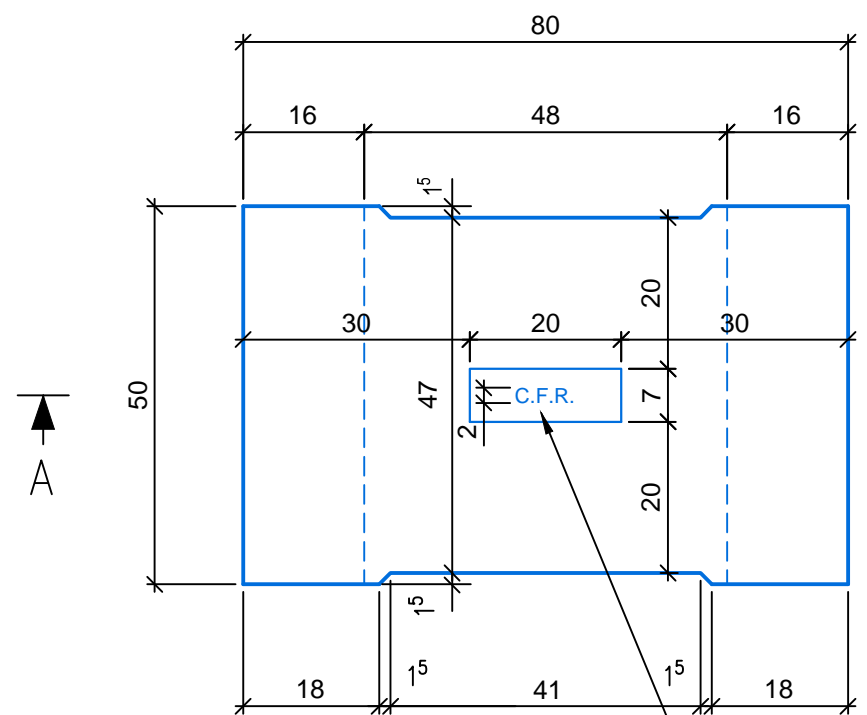


PLAN COFRAJ / FORMWORK PLAN

SECTIUNE / SECTION A-A'



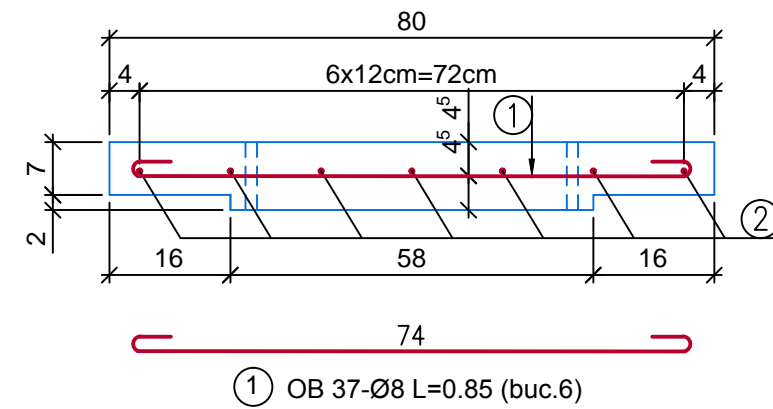
VEDERE IN PLAN/PLAN VIEW



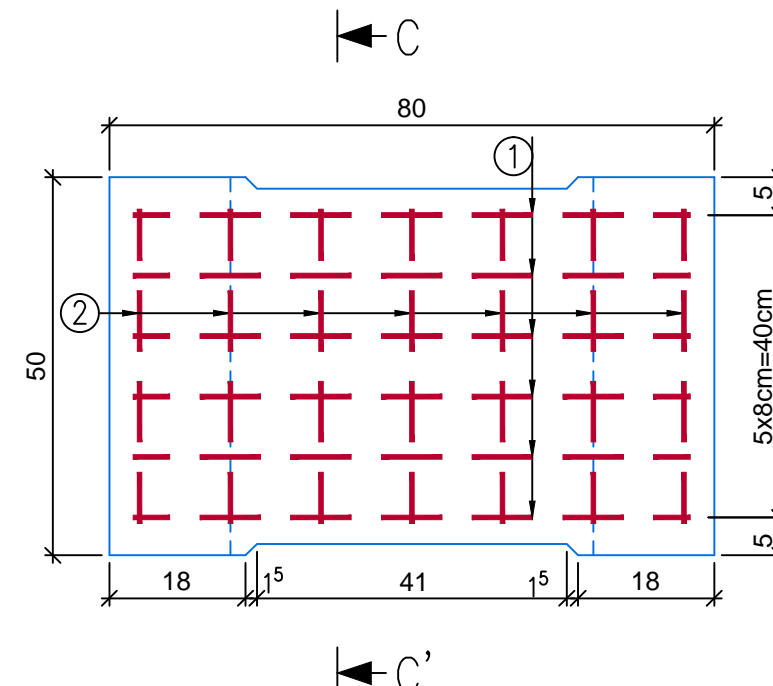
Marcare prin amprentare (sus)  
Imprint marking (up)

PLAN ARMARE / REINFORCEMENT

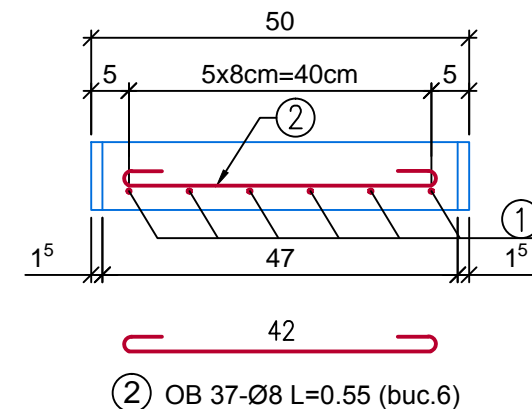
SECTIUNE / SECTION B-B'



VEDERE IN PLAN/PLAN VIEW



SECTIUNE / SECTION C-C'



CARACTERISTICI PENTRU UN PREFABRICAT:

- VOLUM BETON: 0.033 m<sup>3</sup>/ buc;
- BETON ARMAT C 25/30 - S3 - P8 - G100 - EN 206-1 - CEM II/A-S 32,5N - 0/16;
- ARMĂTURI OB 37 Ø 8mm: 3.60 kg/buc;
- GREUTATE: 0.088 t/buc;
- GROSIMEA STRATULUI DE ACOPIRIRE: 2.5 cm.

NOTĂ:

- LA MONTARE, CAPACELE SE VOR ASEZA CU SIGLA "C.F.R." IN SUS.

CHARACTERISTICS FOR ONE PREFABRICAT:

- CONCRETE VOLUM: 0.033 m<sup>3</sup>/ buc;
- REINFORCED CONCRETE: C 25/30 - S3 - P8 - G100 - EN 206-1 - CEM II/A-S 32,5N - 0/16;
- REINFORCED BARS OB 37 Ø 8mm: 3.60 kg/buc;
- WEIGHT: 0.088 t/buc;
- THE THICKNESS OF THE COVERING LAYER: 2.5 cm.

NOTE:

- WHEN MOUNTING THE LIDS WILL BE PLACED HAVING " C.F.R." PRINT UPWARD.

EXTRAS DE ARMATURĂ  
LIST OF THE REINFORCING BARS

MARCA TYPE	Ø	BUCATI PIECES	L / BUC L / PCS	L / Ø OB 37
1	8	6	0.85	5.10
2	8	7	0.55	3.85
TOTAL LUNGIMI / Ø TOTAL LENGTHS / Ø				8.95
GREUTATE / Ø / ML WEIGHT / Ø / ML				0.395
TOTAL GREUTATE TOTAL WEIGHT				3.60 kg

Indice Index	Data Date	Modificare Modification/Revision	Proiectant Designer	Aprobat Consultant Approved Consultant	Aprobat CFR Approved CFR
D					
C					
B					
A					



C.N.C.F. "C.F.R." - S.A.

CLIENT / CLIENT



CONSULTANT / CONSULTANT

Aprobat Approved	Șef proiect Project manager	R. Liuzza	Data Date	Semnătură Signature
Aprobat Approved	Coordonator Secțiune 1 Section 1 Coordinator	C. Gambelli	dec. 2011	<i>[Signature]</i>
Verificat Checked	Expert Cheie Key Expert	A. Troiano	dec. 2011	<i>[Signature]</i>

SUBCONTRACTANT / SUBCONTRACTOR

Aprobat Approved	Responsabil Subconsultant Subconsultant Responsible	A. Stanciu - Dinulescu	Data Date	Semnătură Signature
Întocmit Elaborated	Proiectant Designer	S. Enache		<i>[Signature]</i>

Reabilitarea liniei de cale ferata Braşov - Simeria, parte componentă a coridorului IV Pan European, pentru circulația trenurilor cu viteza maximă de 160 km/h,  
Tronsonul : Braşov - Sighișoara  
Rehabilitation of the railway line Braşov - Simeria, component Part of the IV Pan-European Corridor, for the trains circulation with maximum speed of 160 km/h,  
Section : Braşov - Sighișoara

Proiect/Project  
2004/RO/16/P/PA/003  
Faza / Phase:

Denumire desen / Drawing Title :

Capac prefabricat tip 3 / Prefabricated lid type 3  
Plan cofraj si detalii de armare / Formwork plan and reinforcing bars details

Codificare / Codification System	Scara / Scale 1:10	LOT / LOT	Nr. / No 01 / 01
E A 5 1 0 1 E 0 0 Q K C T 0 0 0 X 0 1 2 0			