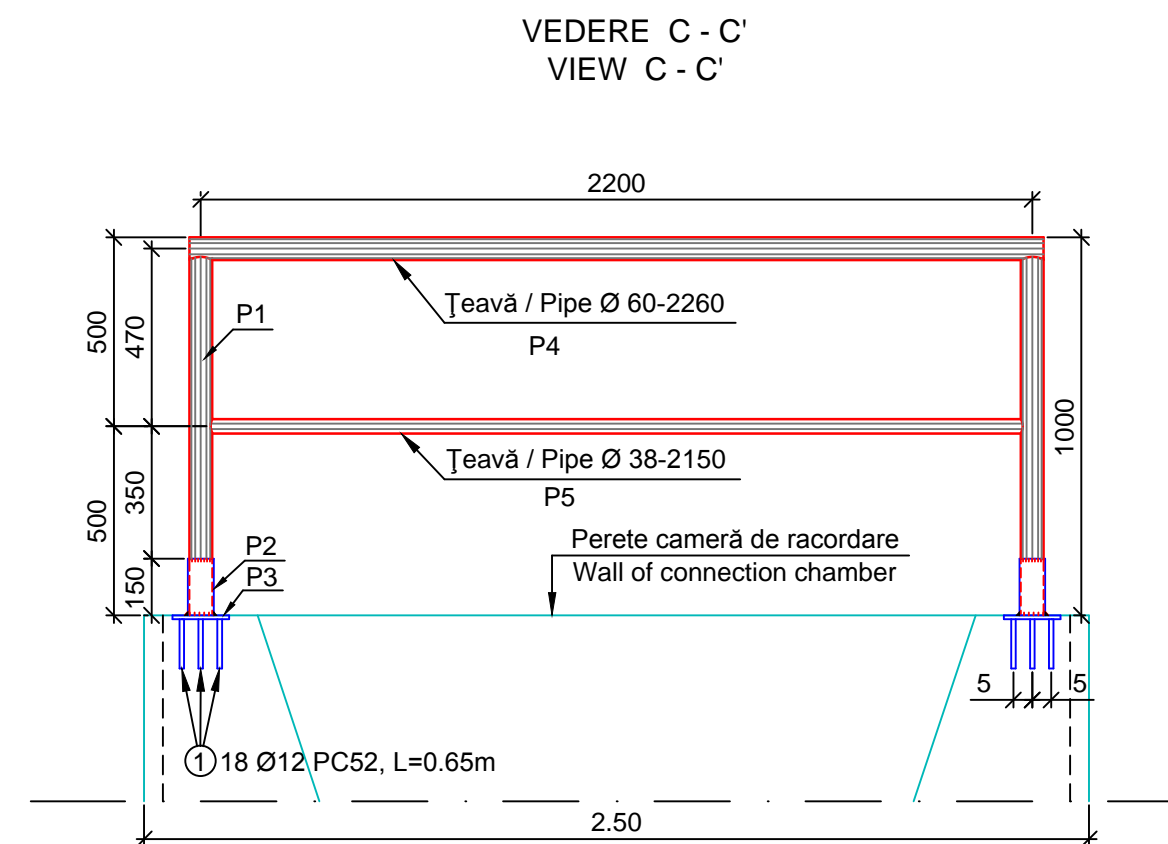
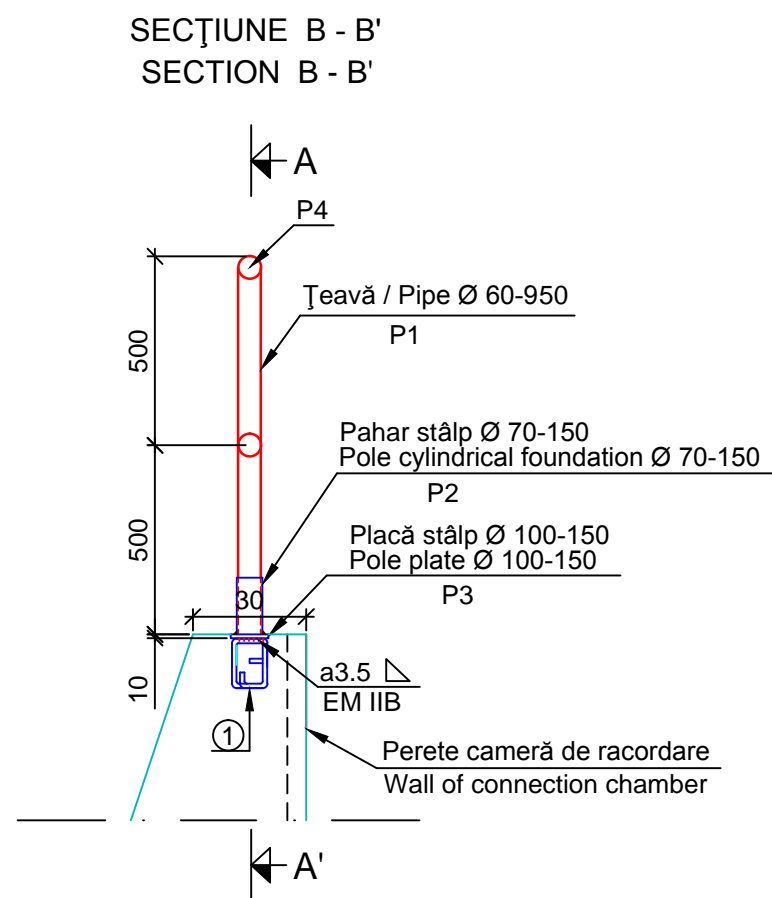
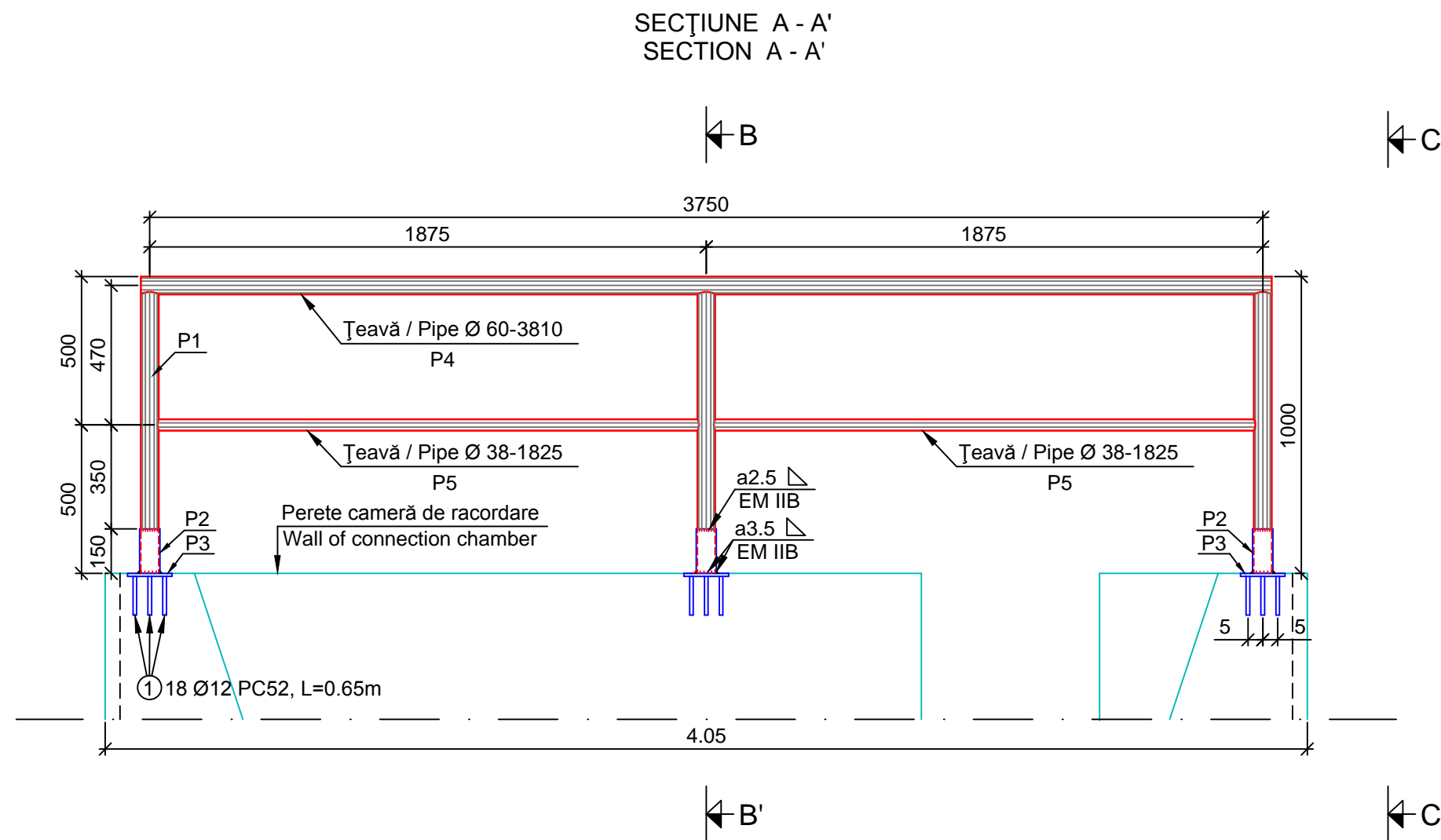
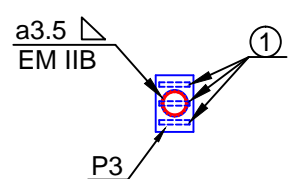


PARAPET METALIC PENTRU CAMERA DE RACORDARE / METALLIC PARAPET FROM CONNECTING CHAMBER
 DETALII / DETAILS

Scara / Scale 1:20



VEDERE ÎN PLAN
PLAN VIEW



D					
C					
B					
A					
Indice Index	Data Date	Modificare Modification/Revision	Proiectant Designer	Aprobat Consultant Approved Consultant	Aprobat CFR Approved CFR



GUVERNUL ROMÂNIEI
ROMANIAN GOVERNMENT

PROIECT FINANȚAT DE UNIUNEA EUROPEANĂ
EUROPEAN UNION FINANCED PROJECT



C.N.C.F. "C.F.R." - S.A.

CLIENT / CLIENT



CONSULTANT / CONSULTANT

Aprobat Approved	Șef proiect Project manager	R. Liuzza	Data Date	Semnătură Signature
Aprobat Approved	Coordonator Secțiune 1 Section 1 Coordinator	C. Gambelli	dec. 2011	
Verificat Checked	Expert Cheie Key Expert	A. Troiano	dec. 2011	

SUBCONTRACTANT / SUBCONTRACTOR



Aprobat Approved	Responsabil Subconsultant Subconsultant Responsible	A. Stanciu - Dinulescu		
Întocmit Elaborated	Proiectant Designer	S. Enache		

Reabilitarea liniei de cale ferată Brașov - Simeria, parte componentă a coridorului IV Pan European, pentru circulația trenurilor cu viteză maximă de 160 km/h,
Tronsonul : Brașov - Sighișoara
 Rehabilitation of the railway line Brașov - Simeria, component Part of the IV Pan-European Corridor, for the trains circulation with maximum speed of 160 km/h,
Section : Brașov - Sighișoara

Proiect/Project
2004/RO/16/P/PA/003
Faza / Phase:

Denumire desen / Drawing Title :

Parapet metalic pentru camera de racordare / Metallic parapet from connecting chamber
 Detalii / Details

Codificare / Codification System	Scara / Scale 1:20	LOT / LOT	Nr. / No 01 / 01
----------------------------------	-----------------------	-----------	---------------------

E A 5 1 0 1 E 0 0 Q C 0 0 0 X 0 0 4 0