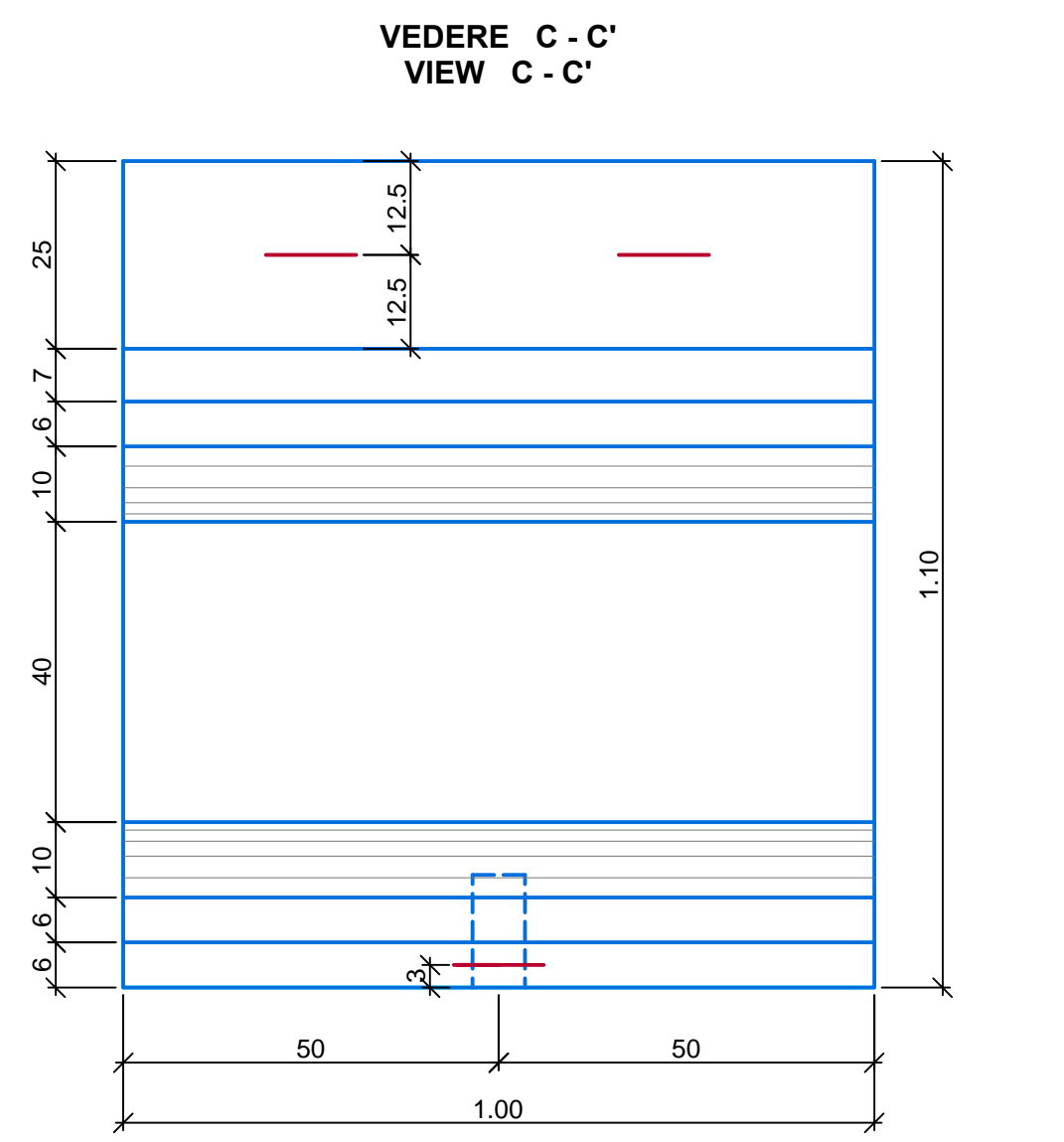


**CARACTERISTICI PENTRU UN PREFABRICAT:**  
 - VOLUM BETON: 0,95 m<sup>3</sup>/ buc;  
 - BETON ARMAT C 25/30 - S3 - P8 - G100 - EN 206-1 - CEM III/A-S 32,5N - 0/16;  
 - ARMĂTURI OB 37 Ø 10-16mm: 118 kg/buc;  
 - GREUTATE: 2,40 t/buc;  
 - GROSIMEA STRATULUI DE ACOPERIRE: 2 cm  
 (cu excepția armăturii marca 4 de la nivelul fundului rigolei peste care grosimea stratului de acoperire este 3cm).

**NOTA:**  
 - CAPACUL PENTRU ACOPERIREA RIGOLEI ESTE DAT ÎN PLANUL EA5101E00QKCT000X0030.

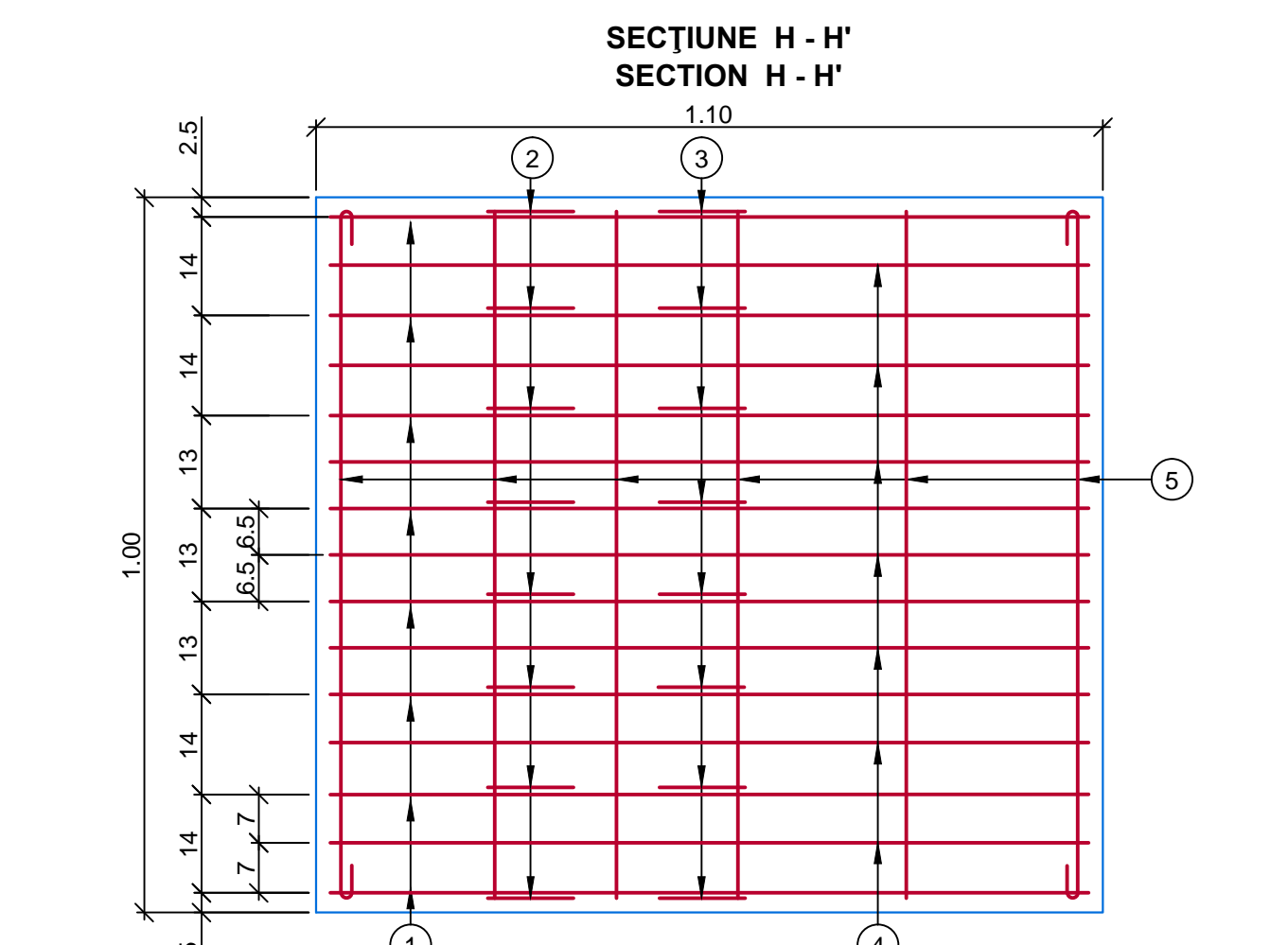
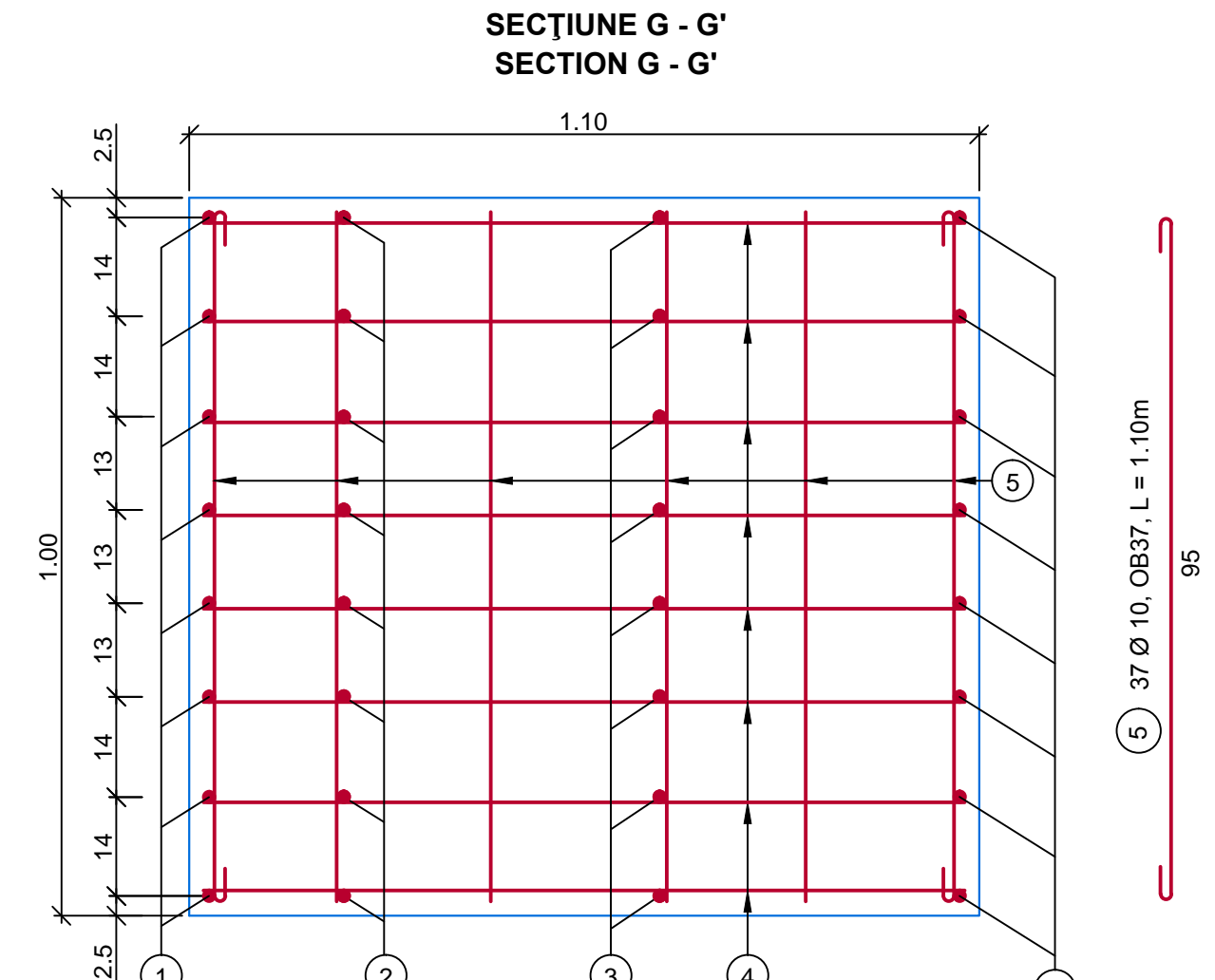
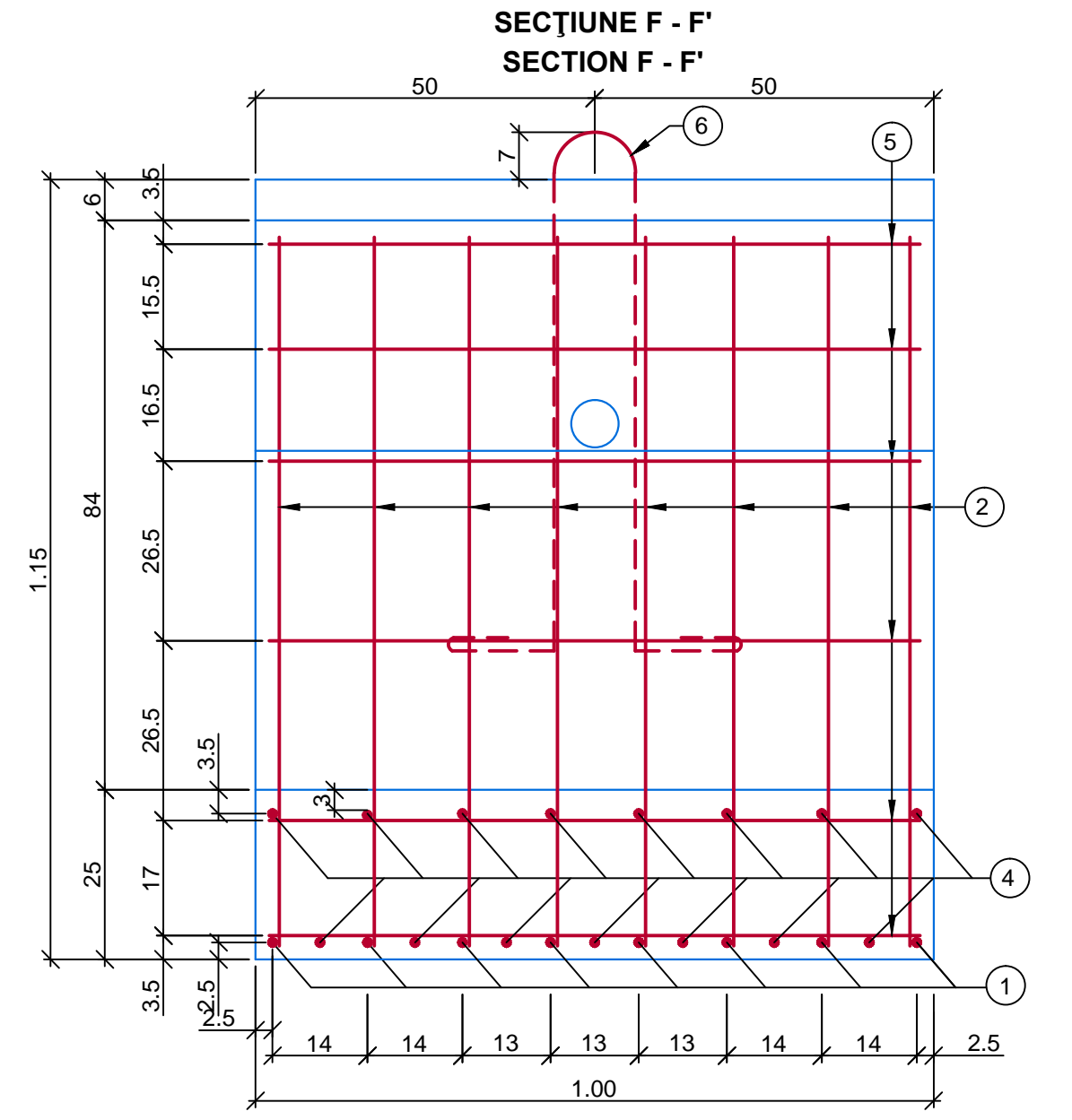
**CHARACTERISTICS FOR ONE PREFABRICAT:**  
 - CONCRETE VOLUM: 0,95 m<sup>3</sup>/ buc;  
 - REINFORCED CONCRETE: C 25/30 - S3 - P8 - G100 - EN 206-1 - CEM III/A-S 32,5N - 0/16;  
 - REINFORCED BARS OB 37 Ø 10-16mm: 118 kg/buc;  
 - WEIGHT: 2,40 t/buc;  
 - THE THICKNESS OF THE COVERING LAYER: 2 cm  
 (except iron mark 4 from the bottom level of the gutter over which the thickness of the covering layer will be 3cm).

**NOTE:**  
 - THE LID TO COVER THE GUTTER IS PRESENTED IN PLAN EA5101E00QKCT000X0030.



**EXTRAS DE ARMATURA LIST OF THE REINFORCING BARS**

MARCA TYPE	Ø	BUC. PCS.	L / BUC L / PCS	L/Ø OB37		
				Ø 10	Ø 12	Ø 16
1	12	8	5.00	—	40.00	—
2	12	8	1.75	—	14.00	—
3	12	8	1.70	—	13.60	—
4	12	15	1.25	—	19.00	—
5	10	37	1.10	40.70	—	—
6	16	3	2.30	—	—	6.90
7	12	8	0.50	—	4.00	—
8	12	4	0.40	—	1.60	—
TOTAL LUNGIMI / Ø TOTAL LENGTHS / Ø				40.70	92.20	6.90
GREUTATE / Ø / M.L. WEIGHT / Ø / M.L.				0.617	0.888	1.578
TOTAL GREUTATI / Ø TOTAL WEIGHT / Ø				25.10	81.90	10.90
TOTAL GREUTATI TOTAL WEIGHT				118 kg		



**RIGOLA PREFABRICATA H = 0.90M CU REBORD INTARIT H = 0.50M;  
 PREFABRICATED GUTTER H = 0.90M WITH THICKER CORBEL H = 0.50M  
 PLAN COFRAJ SI DETALII DE ARMARE;  
 FORMWORK PLAN AND REINFORCING BARS DETAILS**

D					
C					
B					
A					
Indice Index	Data Date	Modificare Modification/Revision	Proiectant Designer	Aprobat Consultant Approved Consultant	Aprobat CFR Approved CFR

GUVERNUL ROMANIEI ROMANIAN GOVERNMENT  
 PROIECT FINANȚAT DE UNIUNEA EUROPEANĂ EUROPEAN UNION FINANCED PROJECT

CLIENT / CLIENT  
 C.N.C.F. "C.F.R." - S.A.

CONSULTANT / CONSULTANT		Data Date	Semnătură Signature
Aprobat Approved	Șef proiect Project manager	R. Liuzza	dec. 2011
Aprobat Approved	Coordonator Secțiune 1 Section 1 Coordinator	C. Gambelli	dec. 2011
Verificat Checked	Expert Cheie Key Expert	A. Troiano	dec. 2011

SUBCONTRACTANT / SUBCONTRACTOR			
Aprobat Approved	Responsabil Subconsultant Subconsultant Responsible	A. Stanciu - Dinulescu	
Intocmit Elaborated	Proiectant Designer	E. Terziman	

Reabilitarea liniei de cale ferată Brașov - Simeria, parte componentă a coridorului IV Pan European, pentru circulația trenurilor cu viteză maximă de 160 km/h,  
 Tronsonul : Brașov - Sighișoara  
 Rehabilitation of the railway line Brașov - Simeria, component Part of the IV Pan-European Corridor, for the trains circulation with maximum speed of 160 km/h,  
 Section : Brașov - Sighișoara

Denumire desen / Drawing Title :  
 Rigolă prefabricată tip 1 / Prefabricated gutter type 1  
 Plan cofraj și detalii de armare / Formwork plan and reinforcing bars details

Codificare / Codification System	Scara / Scale 1:10	LOT / LOT	Nr. / No 01 / 01
----------------------------------	--------------------	-----------	------------------

EA51 01 E 00 QK CT 00 0 X 001 0