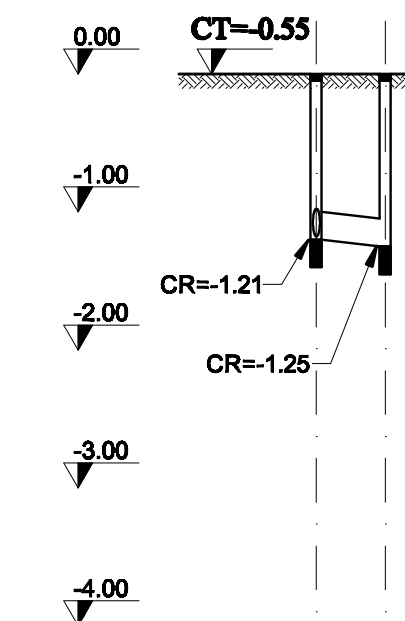


Numar camin	Manhole number	C1	C2	C4	SP	CE
Cota teren amenajat	Prepared ground level	-0.55	-0.55	-0.55	-0.55	-0.55
Cota radier canal	Apron level	-1.25	-1.32	-1.39	-1.51	-1.42
Adâncime camin	Manhole depth	0.70	0.77	0.84	0.96	0.87
Adâncime sapatura	Digging depth	0.80	0.97	1.04	1.16	1.07
Panta	Slope		8‰	8‰	2‰	
Distanța între camine (m)	Distance between manholes (m)	8.00	9.00	15.00	45.00	
Distanțe cumulate (m)	Added distances (m)	0.00	8.00	17.00	32.00	77.00
Diametrul conductei (mm)	Pipe diameter (mm)	Tub PEID gofrat Dn 200 / PEHD corrugated tube Dn 200			Tub PEID Dn 100 / PEHD tube Dn 100	



Numar camin	Manhole number	C3	C4
Cota teren amenajat	Prepared ground level	-0.55	-0.55
Cota radier canal	Apron level	-1.21	-1.25
Adâncime camin	Manhole depth	0.86	0.70
Adâncime sapatura	Digging depth	0.86	0.9
Panta	Slope		8‰
Distanța între camine (m)	Distance between manholes (m)	5.00	
Distanțe cumulate (m)	Added distances (m)	0.00	5.00
Diametrul conductei (mm)	Pipe diameter (mm)	Tub PEID gofrat Dn 200 / PEHD corrugated tube Dn 200	

**LEGENDA / LEGEND**

- C1-C4 camin vizitare / visiting manhole
- CE camin existent canalizare / existing sewer manhole;
- SP statie de pompare ape uzate / wastewater pumping station Ø1,15 m, H=2,41m
- CR cota radier / apron level
- CT cota teren / ground level

**NOTA**

CT=-0.55m fata de cota pardoseala finita a cladirii ±0.00

**NOTE**

CT=-0.55m from the final flooring level of the building ±0.00

Indice	Data	Modificari	Proiectant	Aprobat Consultant	Aprobat CFR
Index	Date	Modifications/Revisions	Designer	Approved Consultant	Approved CFR

**GUVERNUL ROMANIEI**  
 ROMANIAN GOVERNMENT
 
**PROIECT FINANȚAT DE UNIUNEA EUROPEANĂ**  
 EUROPEAN UNION FINANCED PROJECT

**C.N.C.F. "C.F.R." - S.A.**  
**CLIENT / CLIENT**

CONSULTANT / CONSULTANT			Data	Semnatura
			Date	Signature
Aprobat	Șef proiect	R. Luizza	DEC. 2011	
Aprobat	Coordonator Secțiune 1	C. Gambelli	DEC. 2011	
Verificat	Expert Cheie	Giuseppe Fioraventi	DEC. 2011	

SUBCONTRACTANT / SUBCONTRACTOR			
Aprobat	Responsabil Subcontractant	A.Stancu - Dinulescu	DEC. 2011
Elaborat	Proiectant	Anca Ionescu	DEC. 2011

Reabilitarea liniei de cale ferata Bragov - Simeria, parte componentă a coridorului IV Pan European, pentru circulația trenurilor cu viteză maximă de 160 km/h,  
 Tronsoanel : Bragov - Sighișoara  
 Rehabilitation of the railway line Bragov - Simeria, component Part of the IV Pan-European Corridor, for the trains circulation with maximum speed of 160 km/h,  
 Section : Bragov - Sighișoara

**Proiect/Project**  
 2004/RO/16/PPA003  
**Faza / Phase:**  
 P.Th. / T.D.

**Denumire desen / Drawing Title :**  
**CLADIRE OCC BRASOV / OCC BRASOV BUILDING**  
 Profil longitudinal canalizare menajera  
 Longitudinal profil for sewage

Codificare / Codification System	Scara / Scale	LOT / LOT	Nr. / No
E A 5 1 0 1 E 0 1 F 8 I S 0 0 2 9 0 0 4 0	H:1:20; L:1:200		01 / 01