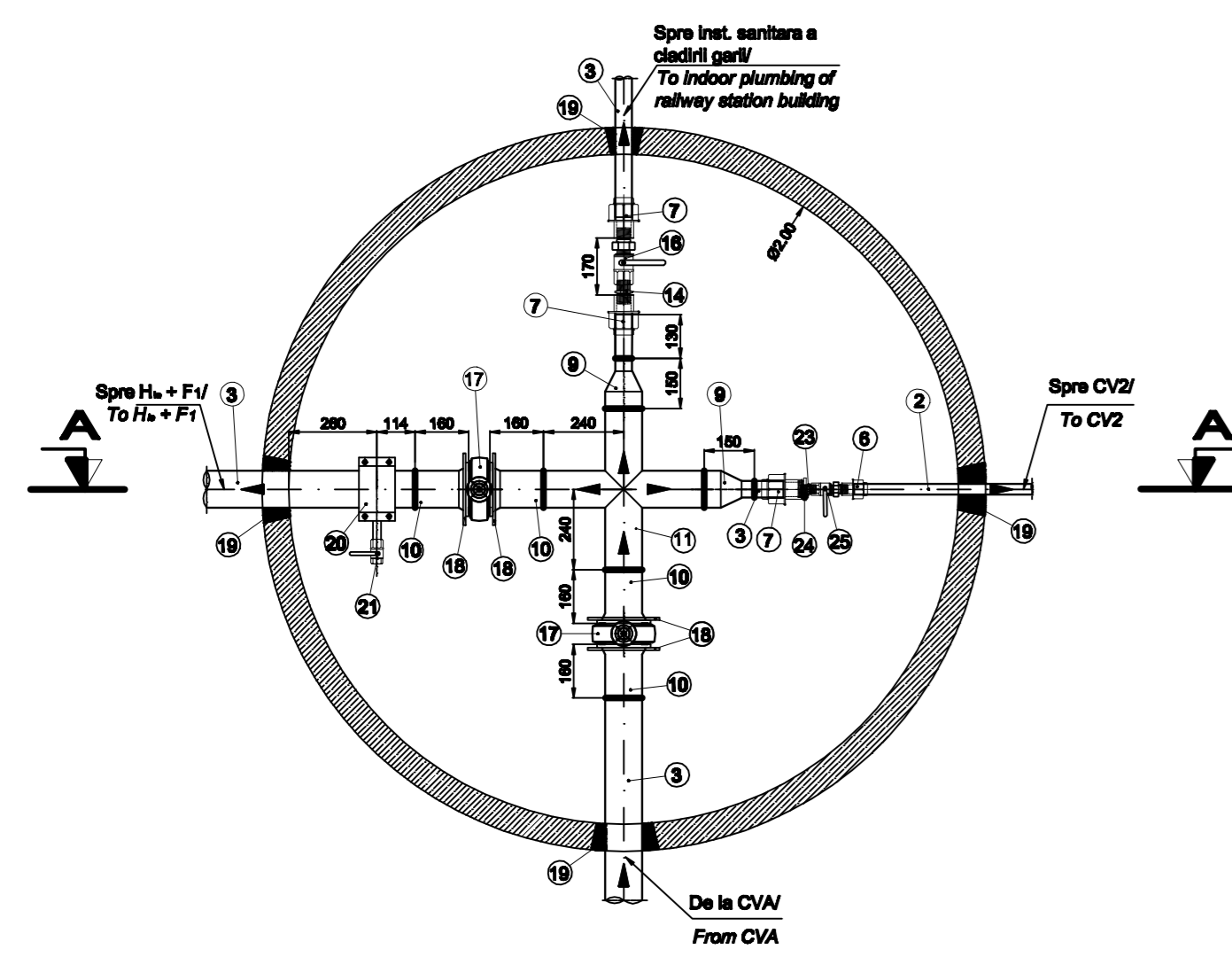


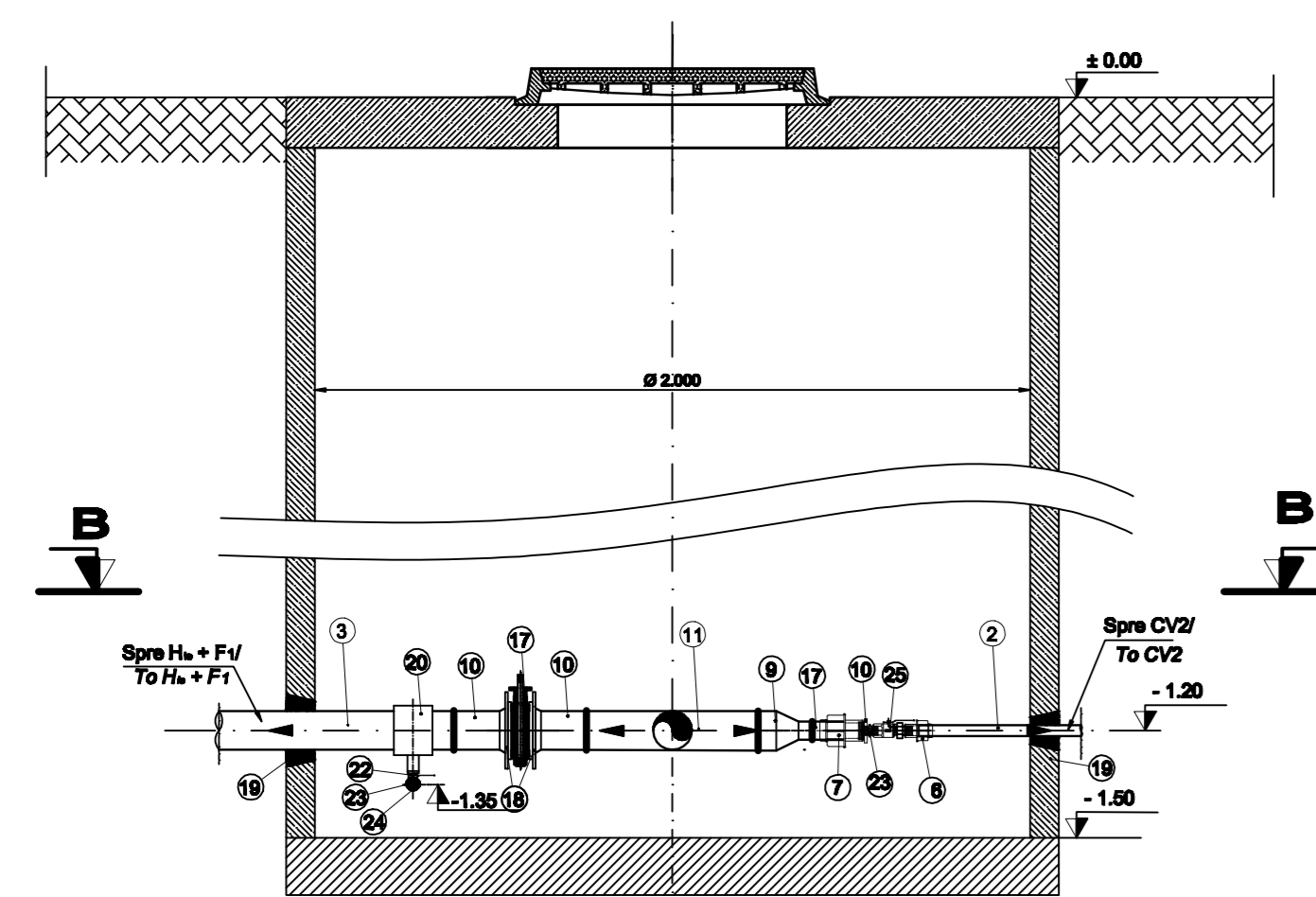
CAMIN VANE CV1/ VALVE CHAMBER CV1

Scara 1 : 20/ Scale 1 : 20

Sectiune B - B/ Section B - B



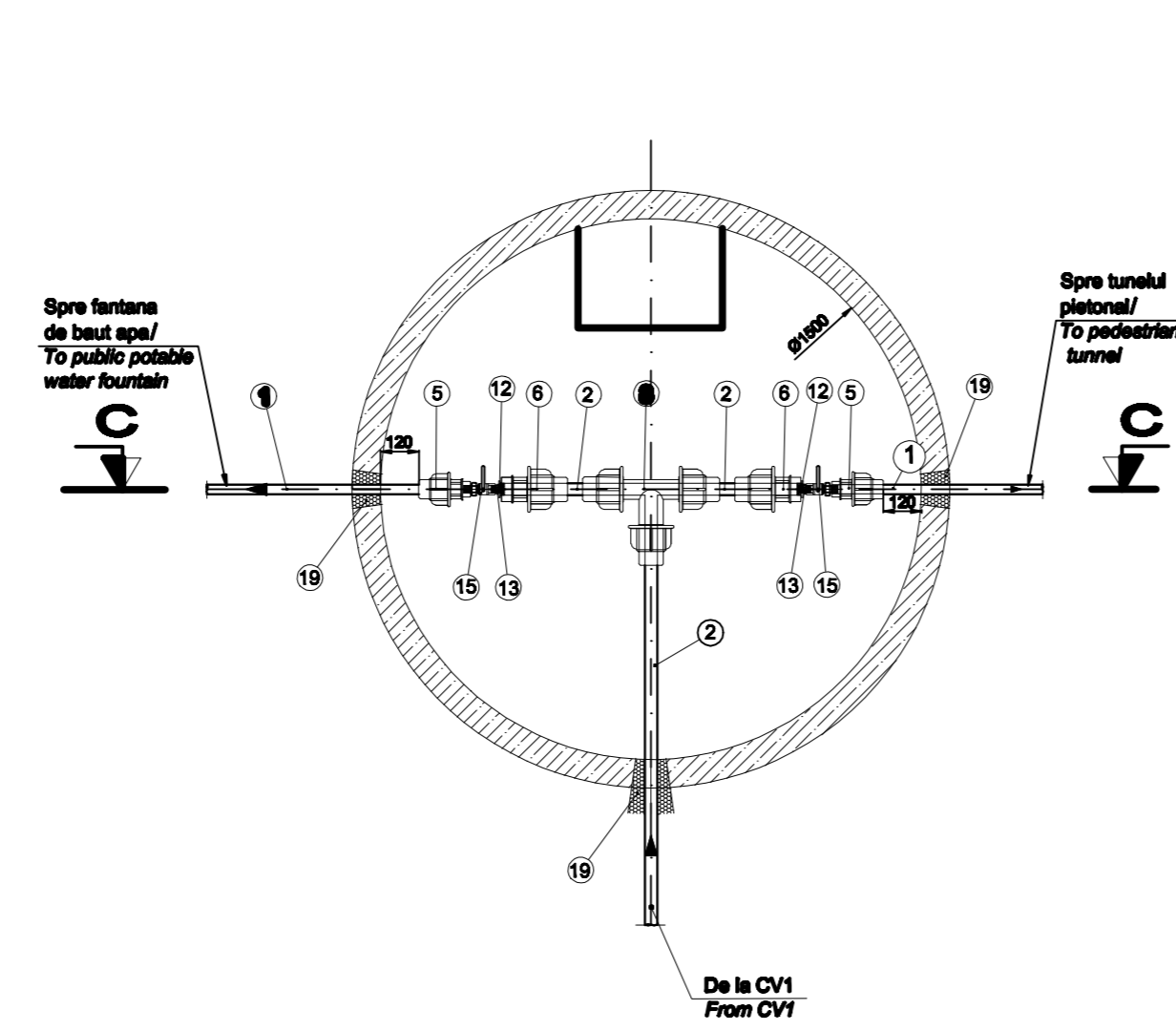
Sectiune A - A/ Section A - A



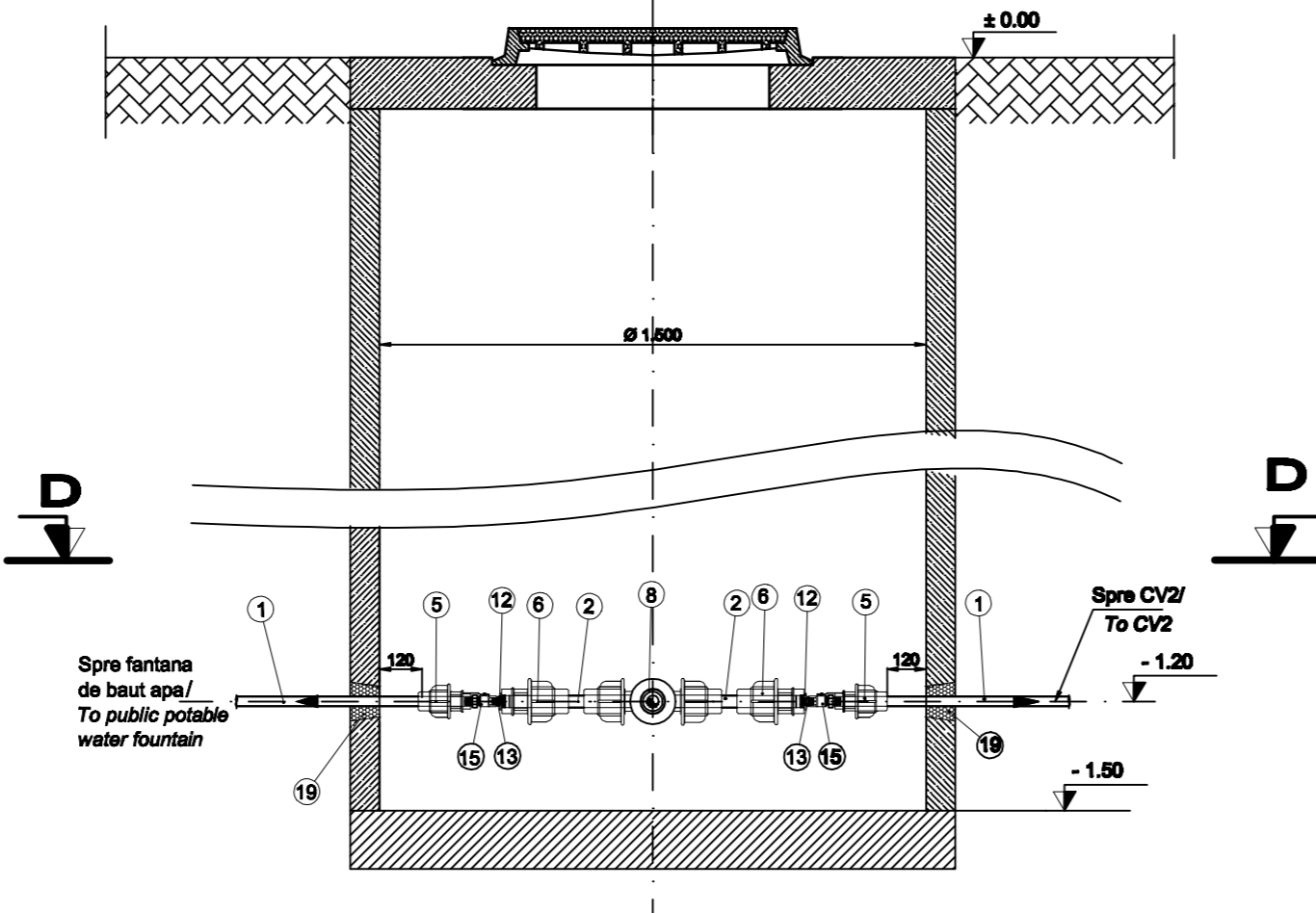
CAMIN VANE CV2/ VALVE CHAMBER CV2

Scara 1 : 20/ Scale 1 : 20

Sectiune D - D/ Section D - D



Sectiune C - C/ Section C - C



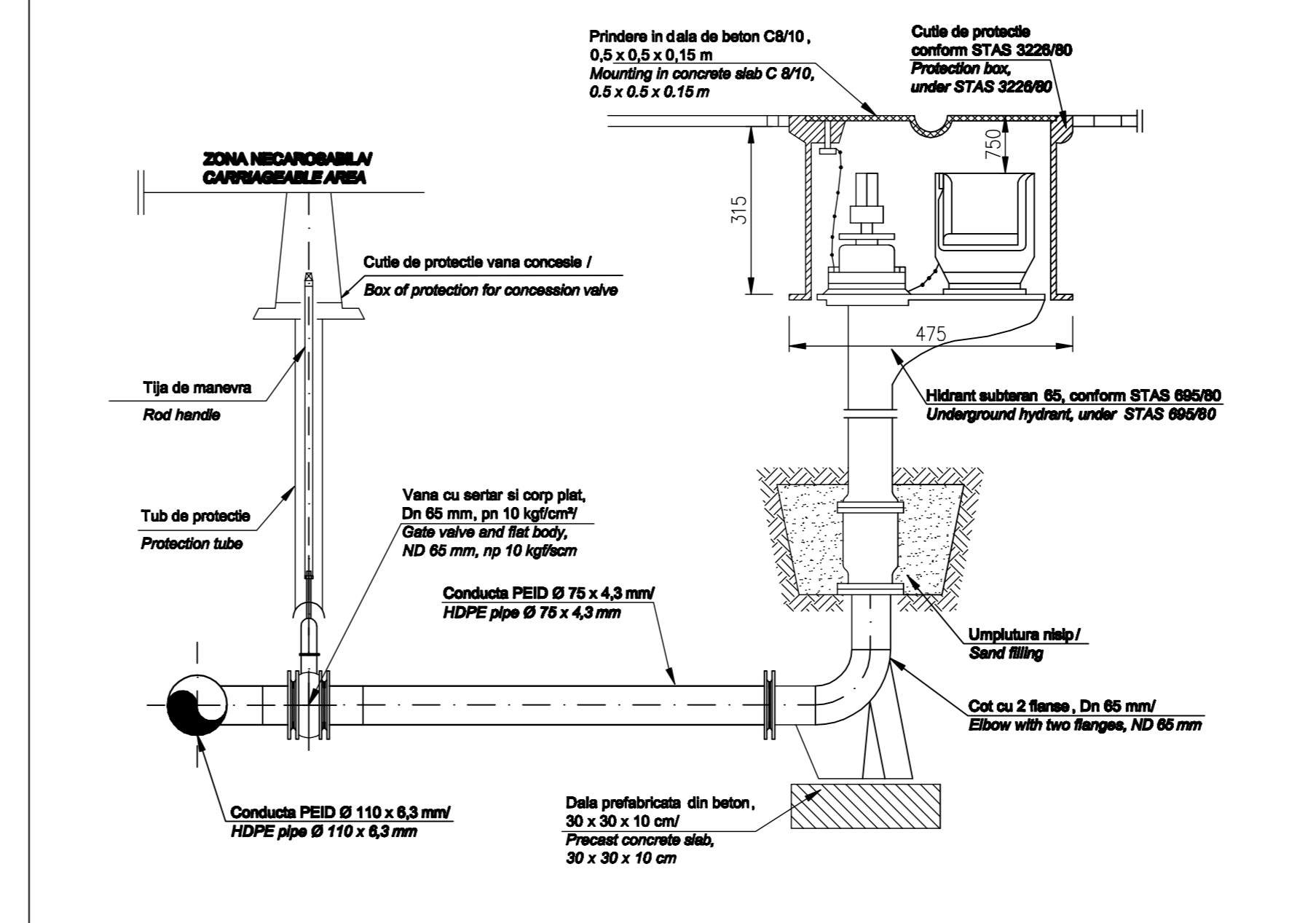
LEGENDA / LEGEND:

- 1 Teava de polietilena PEID, tip PE80, pn 6, SDR 17,6, Ø 25 x 2,0 mm/
High-Density Wktable Polyethylene pipe, for water, PE80 type, SDR 17,6, Ø 25 x 2,0 mm.
- 2 Teava de polietilena PEID, tip PE80, pn 6, SDR 17,6, Ø 32 x 2,0 mm/
High-Density Wktable Polyethylene pipe, for water, PE80 type, SDR 17,6, Ø 32 x 2,0 mm.
- 3 Teava de polietilena PEID, tip PE80, pn 6, SDR 17,6, Ø 50 x 2,9 mm/
High-Density Wktable Polyethylene pipe, for water, PE80 type, SDR 17,6, Ø 50 x 2,9 mm.
- 4 Teava de polietilena PEID, tip PE80, pn 6, SDR 17,6, Ø 110 x 6,3 mm/
High-Density Wktable Polyethylene pipe, for water, PE80 type, SDR 17,6, Ø 110 x 6,3 mm.
- 5 Teu compresune egal, de polietilena PEID, Ø 32 mm/
High-Density Polyethylene tee, for water, Ø 32 mm.
- 6 Reductie concentrica din teava de polietilena PEID, Ø 110-50 mm/
Concentrical adaptor for welding polyethylene pipe, HDPE type, Ø 110-50 mm.
- 7 Capat flansa din teava de polietilena PEID, Ø 110 mm/
Eng flange from polyethylene pipe HDPE type, Ø 110 mm.
- 8 Cruce egala sudista din teava de polietilena PEID, Ø 110 mm/
Welded straight equal cross made of polyethylene pipe, HDPE type, Ø 110 mm.
- 9 Reductie din alama tip FE - FI, Ø 1" - 3/4"
- 10 Straight reducing nipple male, Ø 1" - 3/4"

- 11 Niplu egal, din alama, Ø 3/4"
- 12 Straight male, from yellow brass, Ø 3/4"
- 13 Niplu egal, din alama, Ø 1 1/2"
- 14 Straight male, from yellow brass, Ø 1 1/2"
- 15 Robinet de apa, tip FI - FE, cu sfera, record olandez si levier de actionare, Ø 3/4"
- 16 Full bore ball, female - male, with screwed union and handle, Ø 3/4"
- 17 Robinet de apa, tip FI - FE, cu sfera, record olandez si levier de actionare, Ø 1 1/2"
- 18 Full bore ball, female - male, with screwed union and handle, Ø 1 1/2"
- 19 Robinet cu clapeta fluturanta centrica, Dn 100 pn 10 kgf/cm²/
Butterfly cock, Dn 100, pn 10 kgf/cm².
- 20 Flansa libera pe teava Dn 100, pn 6 kgf/cm²/
Slip-on flange, Dn 100, pn 6 kgf/cm².
- 21 Etansare gol, cu spuma poliuretanaica
Hole sealing with polyurethane foam.
- 22 Piensa de bransare intrata, din PEID, Ø 110-1"
- 23 Clamp saddle with metal stiffening, made out of HDPE, Ø 110-1"
- 24 Robinet de apa, tip FI - FI, cu sfera si levier de actionare, Ø 1"
- 25 Full bore ball, female - female, with handle, Ø 1"
- 26 Cot cu filet, din alama, la 90°, tip FI - FE, Ø 1"
- 27 Elbow with thread, from yellow brass, 90° angle, male-female type, Ø 1"
- 28 Niplu egal, din alama, Ø 1"
- 29 Straight male, from yellow brass, Ø 1"
- 30 Reductie din alama tip FE - FI, Ø 1 1/2" - 1"
- 31 Straight reducing nipple male, Ø 1 1/2" - 1"
- 32 Robinet de apa, tip FI - FI, cu sfera, record olandez si levier de actionare, Ø 1"
- 33 Full bore ball, female - female, with screwed union and handle, Ø 1"

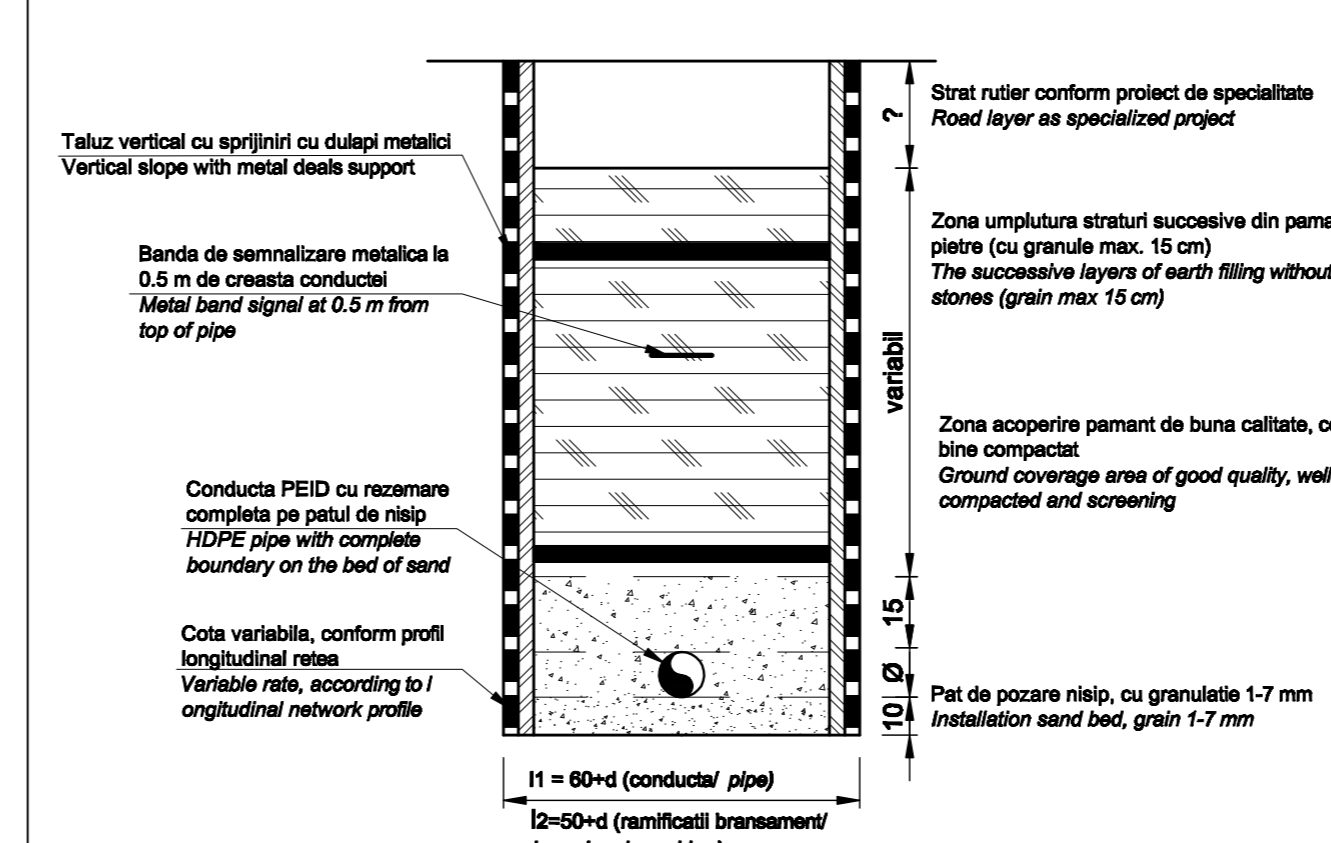
**DETALIU RACORD HIDRANT SUBTERAN/
UNDERGROUND HYDRANT BRANCH DETAIL**

Scara/Scale : %



**DETALIU POZARE CONDUCTA PEID IN TRANSEEA
HDPE PIPE LOCATION DETAIL IN THE TRENCHES**

Scara/Scale : 1 / 20



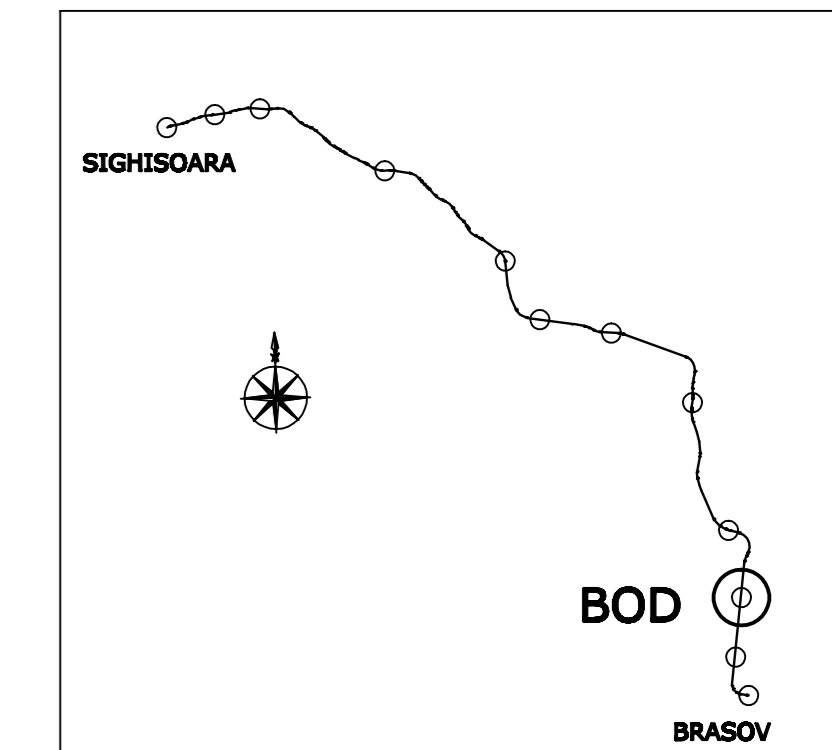
NOTA / NOTE:

- * Zona de acoperire si patul de pozare sunt compactate la aproximativ 91% PROCTOR NORMAL, STAS 2914/97.
- * In teren macroporic, conducta se va poza pe un pat de umplutura de 10 cm de pamant selectat si bine compactat.
- l₁ = latime sant ramificati
- l₂ = latime sant ramificati bransamente
- Ø = diametru conducta sau ramificatie bransament
- * Coverage and laying bed will be compacted about 91% NORMAL PROCTOR, STAS 2914/97.
- * Macroporous field, the pipeline will be sit on a bed of 10 cm of earth filling and well compacted selected.
- l₁ = pipeline trench width
- l₂ = trench width branching ramifications
- Ø = diameter pipe or branch ramification

EXECUTAREA LUCRARILOR DE MONTAJ A REZEI DE ALIMENTARE CU APA POTABILA SI DE INCENDIU SE VA FACE CU RESPECTAREA PRESCRIPTIILOR DIN CAIETULUI DE SARCINI SPECIFIC ACESTUI TIP DE LUCRARI.

THE EXECUTION OF THE FIXING WORKS FOR POTABLE AND FIREFIGHTING WATER SUPPLY NETWORKS WILL BE CARRIED OUT ACCORDING TO THE PROVISIONS OF THE TECHNICAL SPECIFICATIONS THAT ARE INTENDED FOR THIS TYPE OF WORKS.

* CATEGORIA DE IMPORTANTA "C" NORMALA, CALITATEA LUCRARILOR ASIGURANDU-SE DUFA MODELULI 3.
* IMPORTANCE CATEGORY - NORMAL "C", THE WORK QUALITY WILL COMPLY WITH MODEL 3.
* CERINTA DE CALITATE A EXIGENTELOR ESSENTIALE ESTE IN (DIN H.G. 923/95).
* THE QUALITY REQUIREMENT FOR ESSENTIAL DEMANDS IS IN (CF H.G. 923/95)



- NOTA:
- Se va consulta impreuna cu planul de situatie si retelei exterioare de apa potabila, canalizare apa uzata menajera si pluviale.
 - Orice modificare a proiectului fara avizul proiectantului de specialitate, va cadea in responsabilitatea beneficiarului, proiectantul nemai fiind responsabil de functionarea deficienta a instalatiilor prevazute in proiect.
- NOTE:
- This drawing will be consulting with the location plan for water supply, domestic wastewater and rainwater sewerage networks.
 - Any change to the project without the advice of professional designer, will fall into responsibilities of the beneficiary, the designer no longer responsible for malfunctioning facilities specified in the project.

D					
C					
B					
A					
Index	Date	Modificari / Modification	Proiectant / Designer	Approbat / Approved	Approbat CFR / Approved CFR

GUVERNUL ROMANIEI / ROMANIAN GOVERNMENT

PROIECT FINANȚAT DE UNIUNEA EUROPEANĂ / EUROPEAN UNION FINANCED PROJECT

CFR

C.N.C.F. "C.F.R." - S.A.

CLIENT / CLIENT

ITALFER GRUPPO FERROVIE DELLO STATO / STATE Railway Operator

Scott Wilson

OBERMEYER PLANEN + BERATEN GMBH

TECNIC Consulting Engineers

CONSULTANT / CONSULTANT		Data / Date	Semnatura / Signature
Approbat / Approved	Şef proiect / Project manager	R. Luzzi	DEC. 2011
Approbat / Approved	Coordonator Beneficiu 1 / Beneficiary 1 Coordinator	C. Gambelli	DEC. 2011
Verificat / Checked	Expert Verificator / Verifier Expert	Giuseppe Fioravanti	DEC. 2011

SUBCONTRACTANT / SUBCONTRACTOR		Data / Date	Semnatura / Signature
Approbat / Approved	Responsabil Subcontractant / Subcontractant Responsible	A. Stancu - Dinulescu	DEC. 2011
Intorsit / Returned	Proiectant / Designer	Florian Duta	DEC. 2011

Reabilitarea liniei de cale ferata Braşov - Simeria, parte componentă a coridorului IV Pan European, pentru circulaţie la trenurilor cu viteză maximă de 160 km/h, Tronsoanel: Braşov - Sighişoara

Rehabilitation of the railway line Braşov - Simeria, component Part of the IV Pan-European Corridor, for the trains circulation with maximum speed of 160 km/h, Section : Braşov - Sighişoara

Proiect/Project 2004/RQ18/PPA003

Faza / Phase: D.E. / E.D.

Denumire desen / Drawing Title : STATIA C.F. BOD / RAILWAY STATION BOD

Plan instalatiilor hidraulice sursele apa / Detalii executie retea alimentare cu apa / Water sources hydraulic installation plan / Water supply network execution details

Codificare / Codification System	Scara / Scale	LOT / LOT	Nr. / No
E A 6 1 0 1 E 0 5 B C I S 0 0 2 1 0 3 2 1	1 : 20		01 / 01