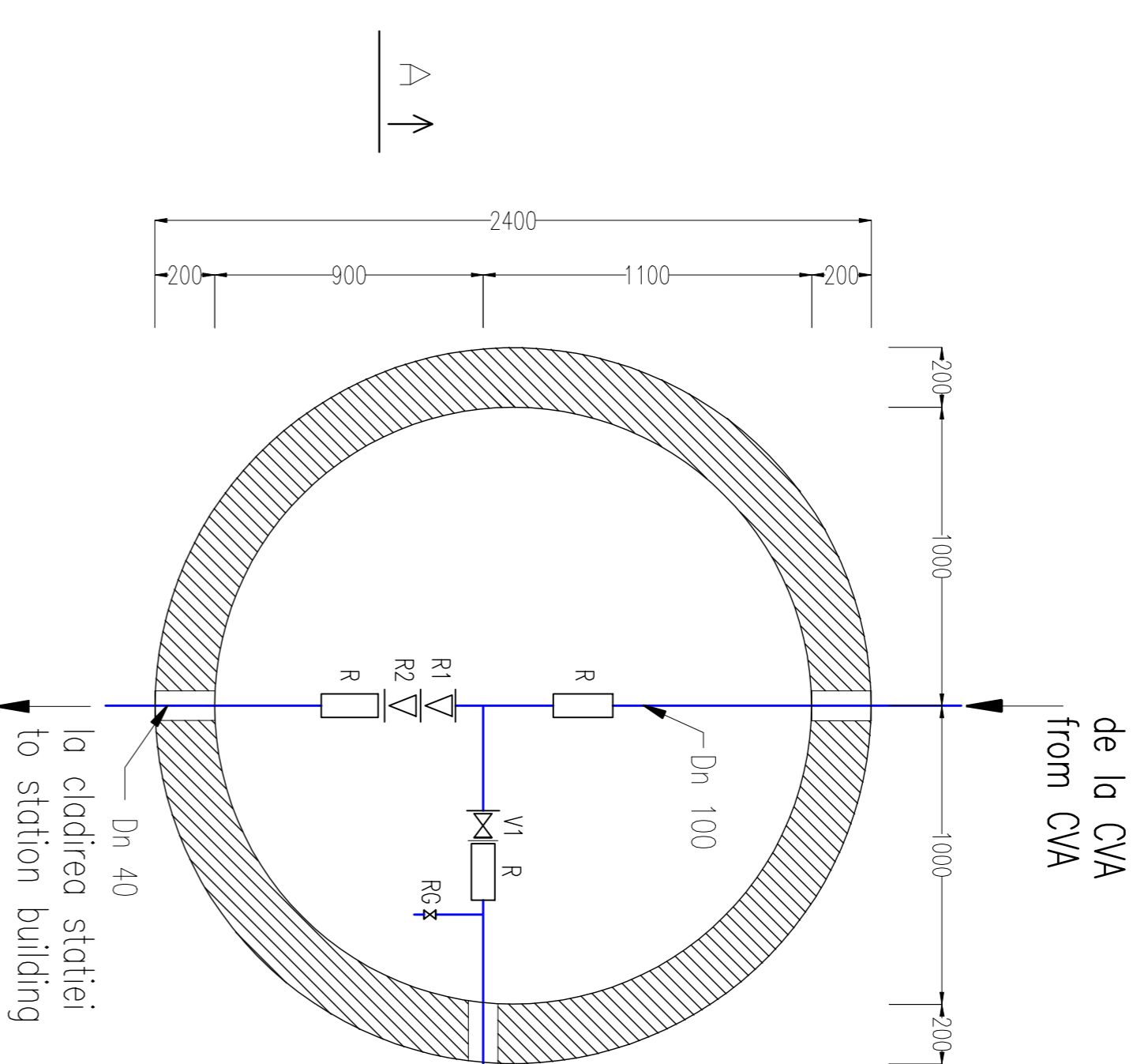


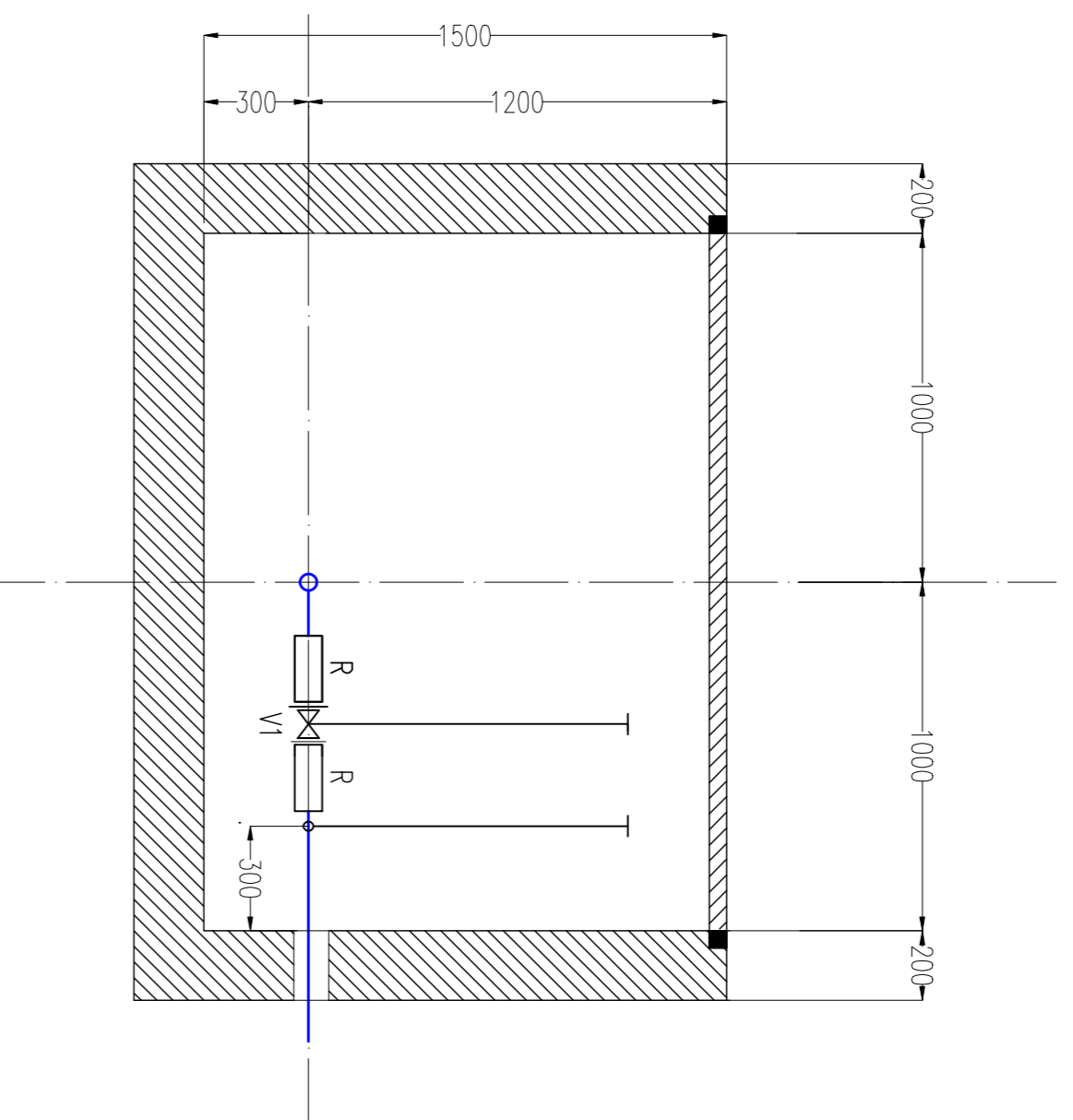
DETALII CĂMINE DE VANE / VALVES MANHOLE DETAILS

SCARA / SCALE 1:20

CV1



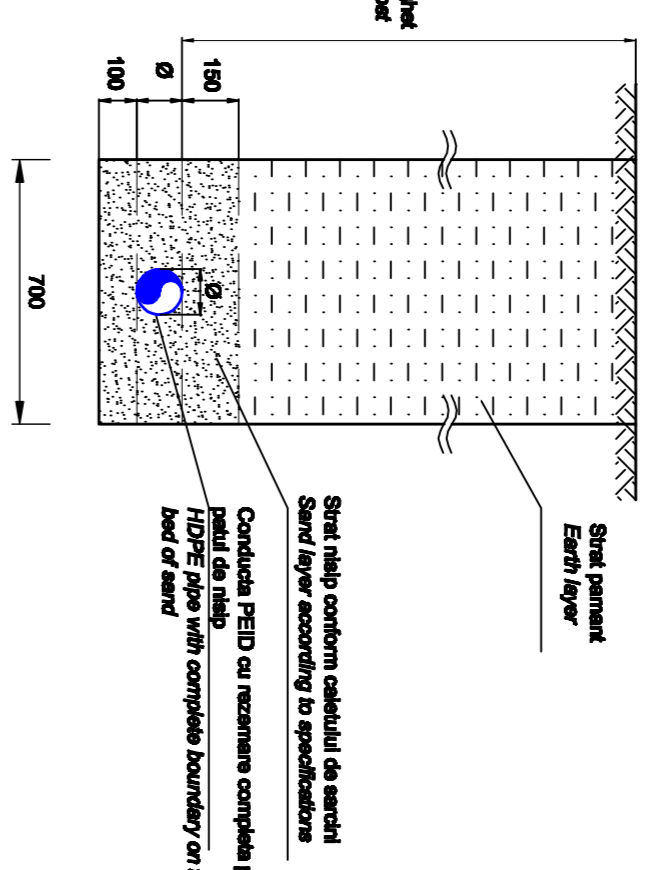
Sectiunea A - A



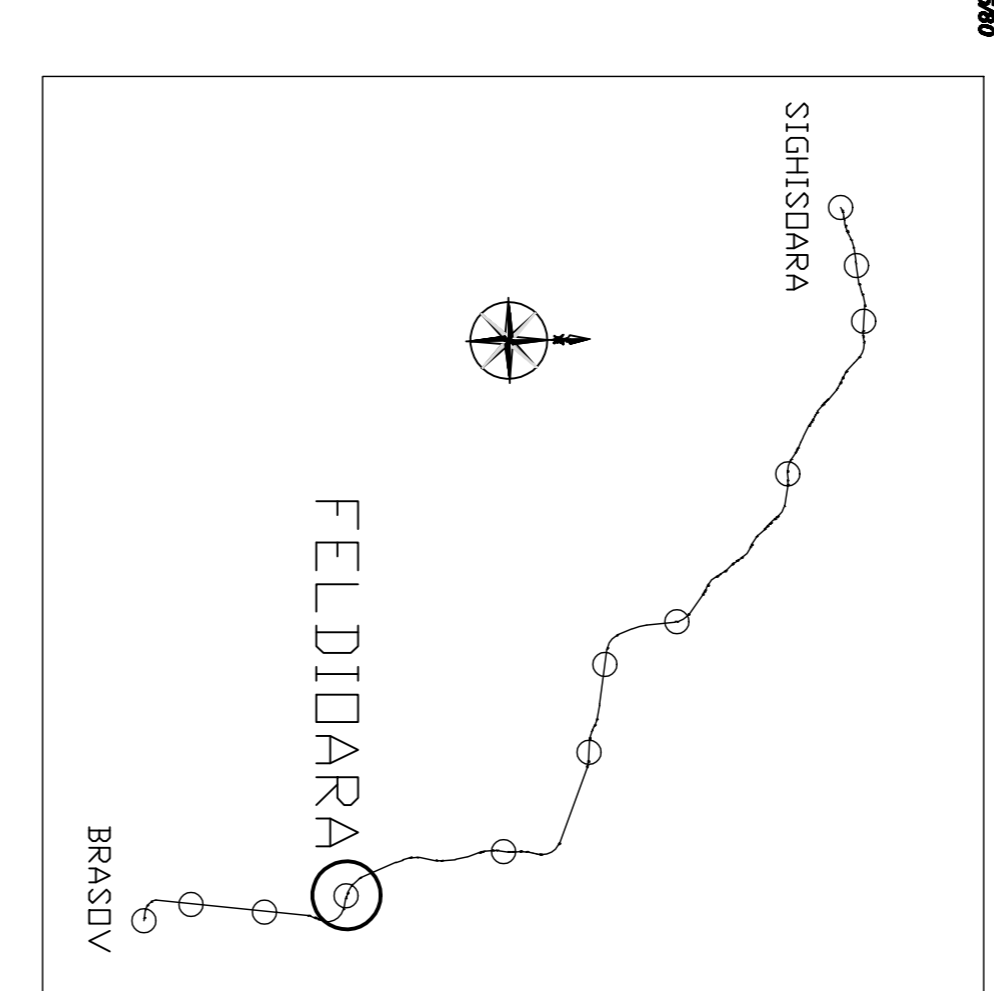
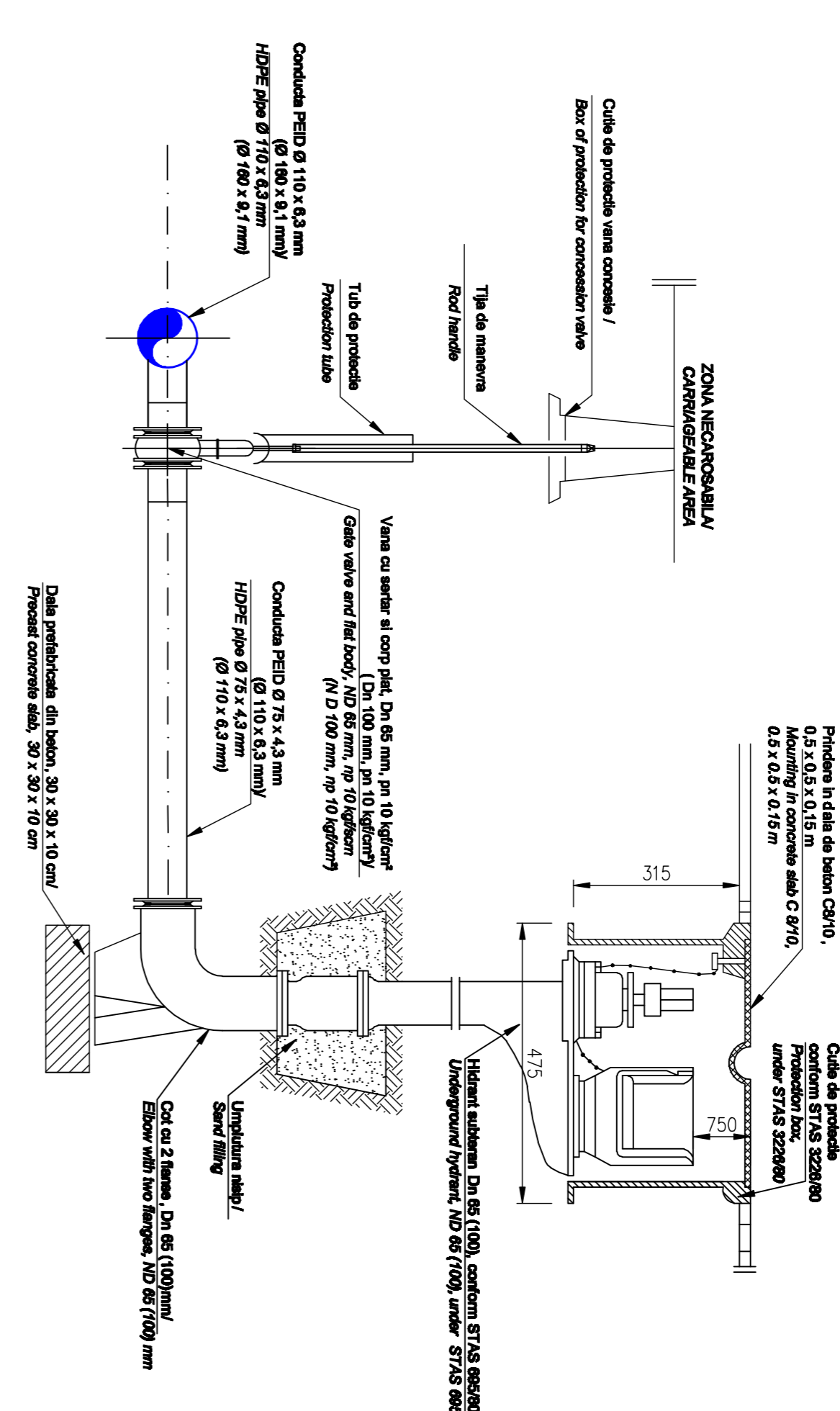
LEGENDA/LEGEND

- _____ conductă apă rece / cold water pipe
- V1-V7 vană cu clapetă fluture / butterfly check valve
- V8-V10 vană cu sferă și manetă / Ball valve with handle
- RI rezervor apa incendiu / firefighting water tank
- R racord compresie PEID-OL / compression connection PEID-OL
- R1 reducere 100/50 / reduction 100/50
- R2 reducere 50/40 / reduction 50/40
- R3 reducere 50/20 / reduction 50/20
- CV1-CV3 cămin de vane / valve manhole
- RG robinet de golire / discharge cock
- T tunel pietonal / passenger tunnel

DETALIU POZARE CONDUCTA PEID IN TRANSEEE/ HDPE PIPE LOCATION DETAIL IN THE TRENCHES/ SCARA / SCALE 1:20

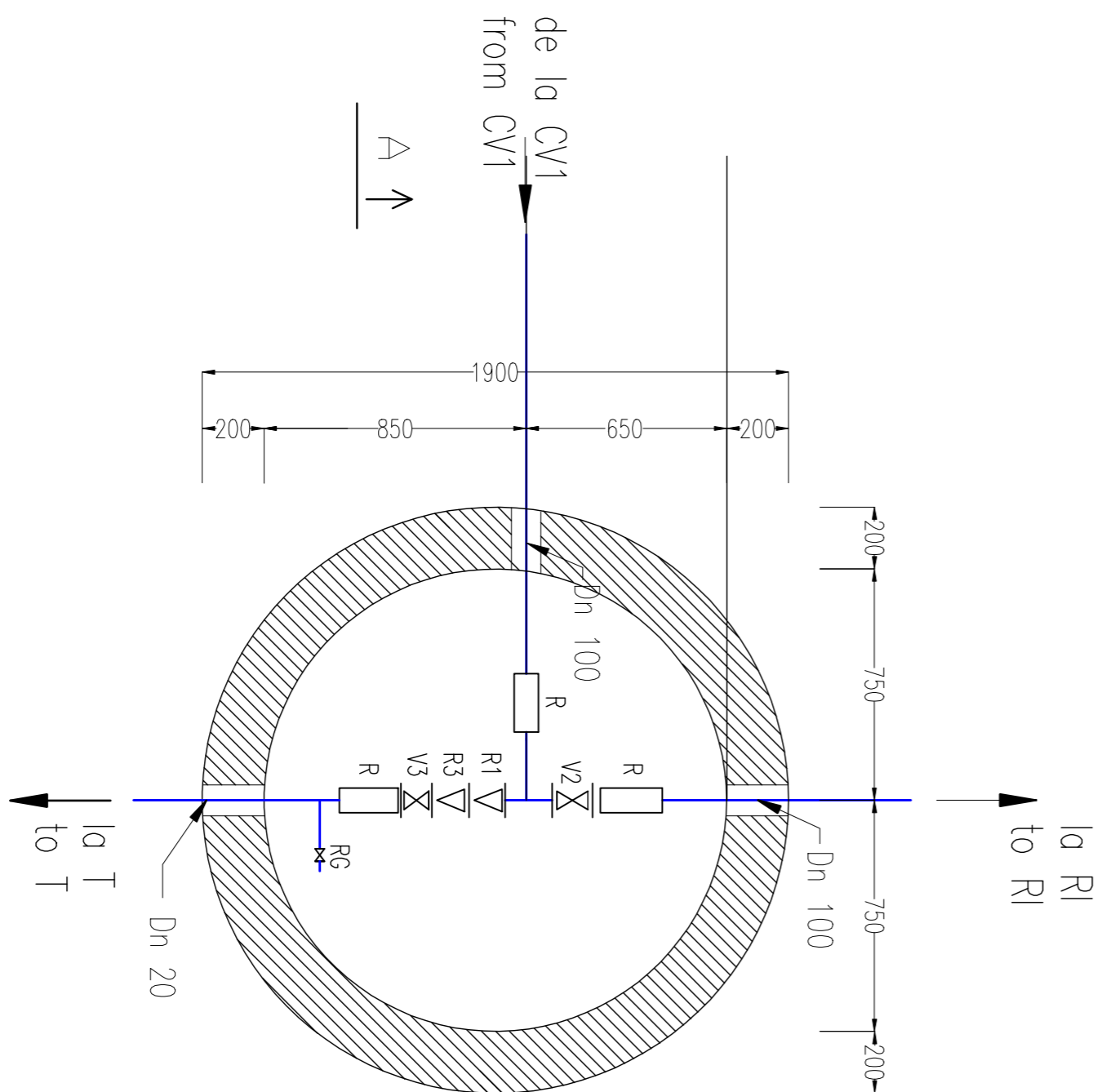


DETALIU RACORD HIDRANT SUBTERAN/ UNDERGROUND HYDRANT BRANCH DETAIL SCARA / SCALE %

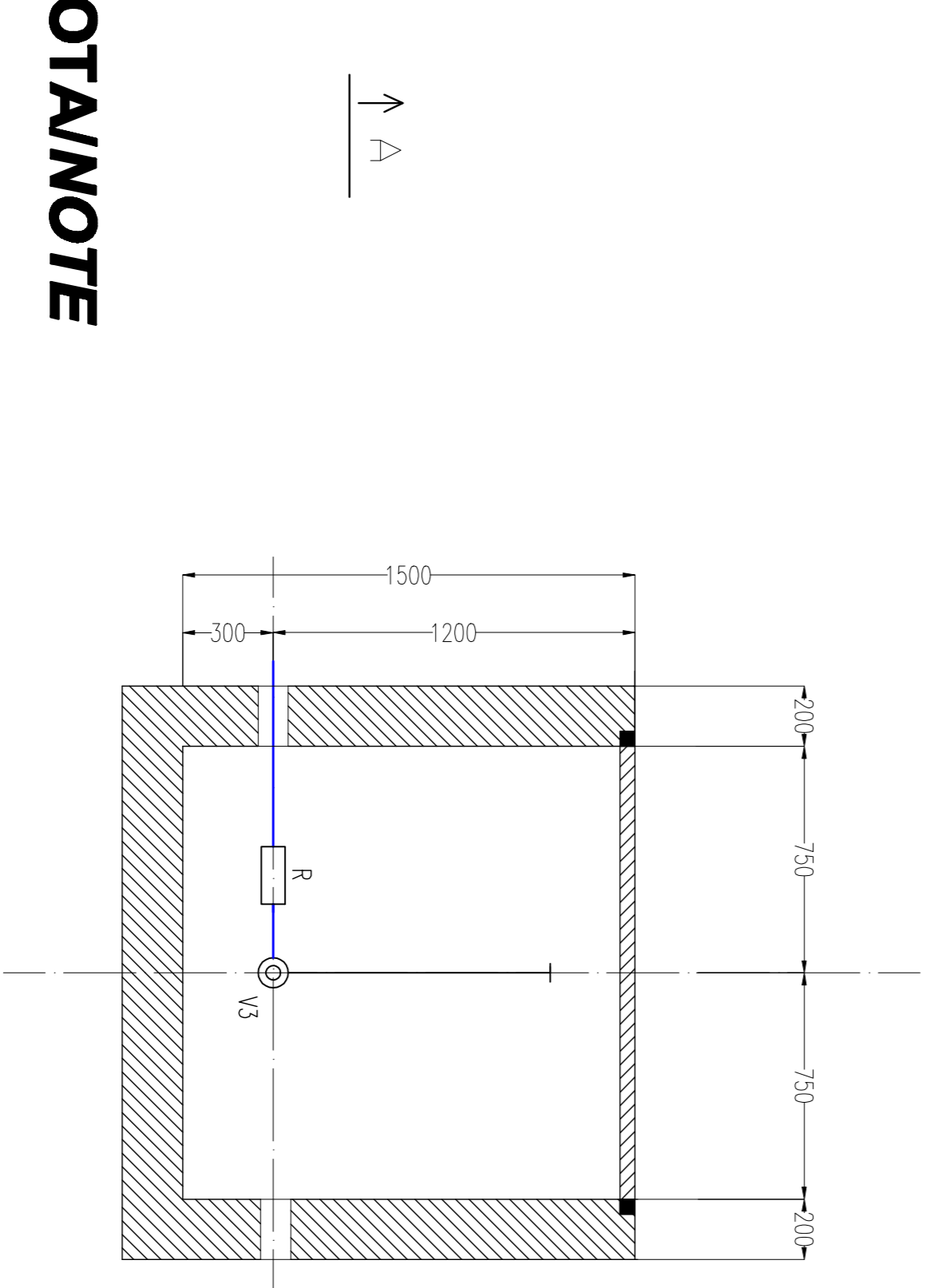


DETALIU REZERVOR INCENDIU FIREFIGHTING WATER TANK DETAIL

Scara/Scale 1 : 50

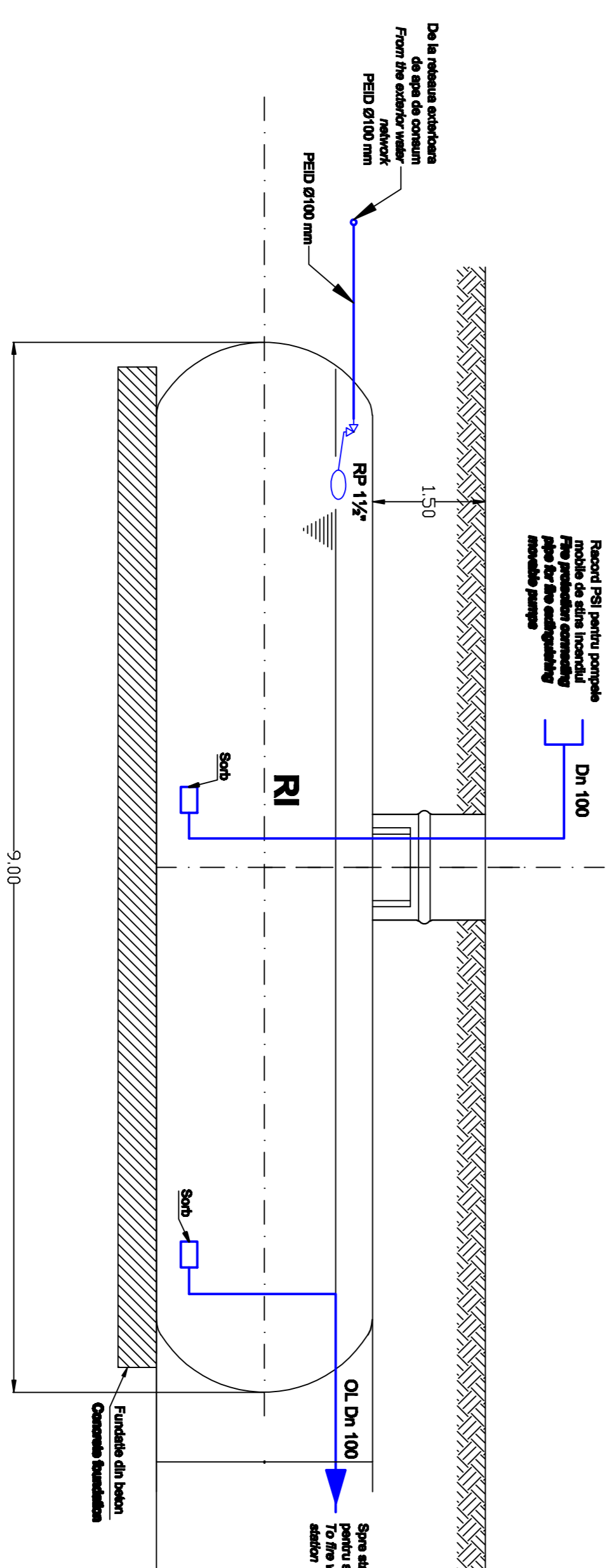


Sectiunea A - A

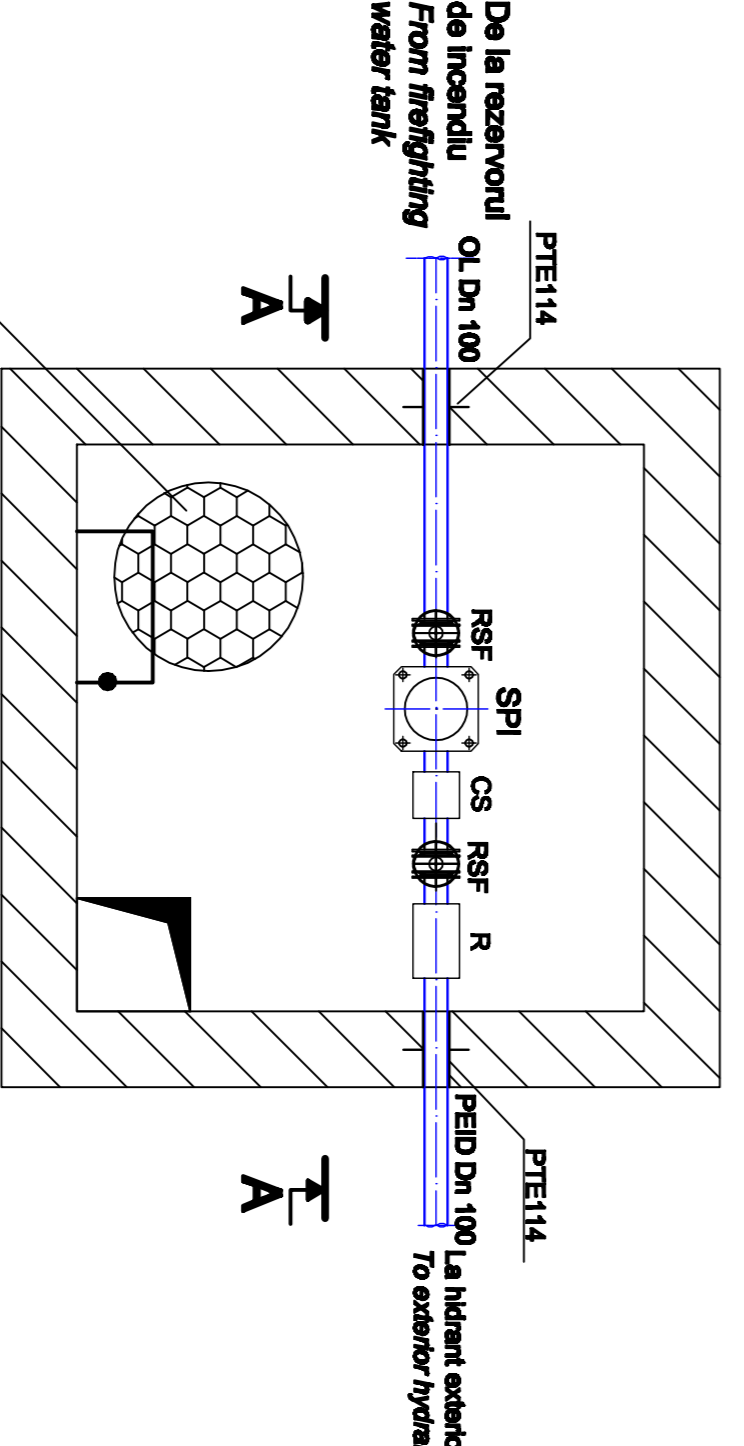


DETALIU STATIE POMPARE PENTRU INCENDIU FIREFIGHTING PUMPING STATION DETAIL

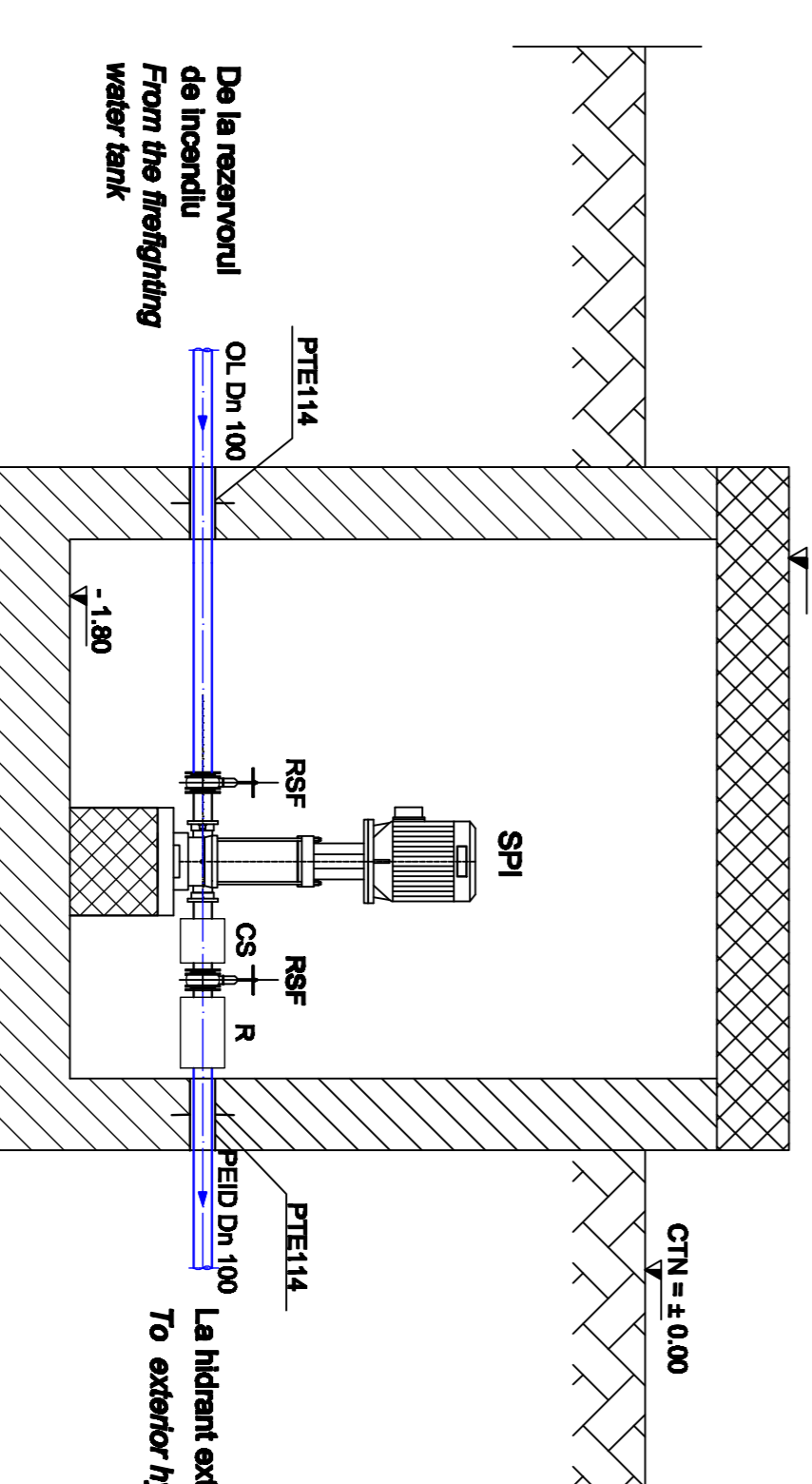
Scara/ Scale: %



Vedere Plan
Plan View



Sectiune A - A
Section A - A



LEGENDA :

- _____ Conducta apa pentru stingerea incendiului.
- RI din leava oval/ fire extinguishing water pipe made from steel
- R - Rezervor scocara apa incendiu/ firefighting water tank
- RP 1/2 - Robinet cu plutea/ float valve 1/2

LEGENDU/ LEGEND :

- PTIE114 - Piesa de trecere etansa prin pereti de beton/ light passage through the concrete walls
- RSF - Robinet cu sarter si flansau slide and flange valve
- SPI - Stela pompa incendiu/ firefighting pumping station
- CS - Clapeta de sarter non-return valve
- R - Racord compresie PEID-OL/ compression connection PEID-OL

0			
1			
2			
3			
4			
5			
6			
7			
8			
9			
10			

CLIENT/ CLIENT GOVERNUL ROMANIEI ROMANIAN GOVERNMENT		PROIECT FINANȚAT DE UNIUNEA EUROPEANĂ EUROPEAN UNION FINANCED PROJECT	
CONSULTANT/ CONSULTANT SFR SCRIPTURĂ DE TRĂZĂRI WITNESS		CNCF - CER - SA C. GHERĂȘ G. FLOREȘTEANU	
Approved by: R. Lăzărescu DEC 2011	Approved by: C. Gherăș DEC 2011	Approved by: G. Floreșteanu DEC 2011	Approved by: Cătălina Băbuș DEC 2011
SUBCONTRACTANT/ SUBCONTRACTOR AMX		Approved by: Cătălina Băbuș DEC 2011	