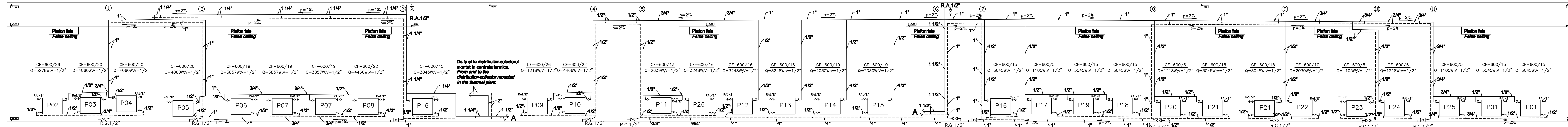


## SCHEMA COLOANELOR - INSTALATIE INCALZIRE INTERIOARA INDOOR HEATING INSTALLATION - COLUMNS SCHEME.



### LEGENDA

- Conducta agent termic tur.
- Conducta agent termic retur.
- CF-H/Nr. El. Radiatoare din aluminiu cu miez de otel(bimetal), tipul elementului-inaltimea/nr. de elemente.
- RG Robinet de goitare.
- RA Robinet de aerisire montat pe coloana.

### LEGEND

- Thermopore tur pipeline
- Thermopore return pipeline
- CF-H/Nr. El. Aluminum radiator core steel (bimetal), element type - height/no. of elements.
- RG Drain valve.
- RA Vent valve mounted on the column.

D					
C					
B					
A					
Index	Date	Modificare Modification/Revision	Proiectant Designer	Aprobat Consultant Approved Consultant	Aprobat CFR Approved CFR



**CFR**  
C.N.C.F. "C.F.R." - S.A.



APROBAT / APPROVED		Data / Date		Semnatura / Signature	
Aprobat / Approved	Şef proiect / Project manager	R. Lizza	DEC. 2011		
Aprobat / Approved	Coordonator Secţiune 1 / Section 1 Coordinator	C. Gambelli	DEC. 2011		
Verificat / Checked	Expert Cheie / Key Expert	Giuseppe Fioravanti	DEC. 2011		

APROBAT / APPROVED		Data / Date		Semnatura / Signature	
Aprobat / Approved	Responsabil Subcontractant / Subcontractant Responsible	A. Stancu - Dinulescu	DEC. 2011		
Intocmit / Elaborated	Proiectant / Designer	Valentin Radu	DEC. 2011		

Reabilitarea liniei de cale ferata Braşov - Simeria, parte componentă a coridorului IV Pan European, pentru circulaţia trenurilor cu viteză maximă de 160 km/h,  
Tronsoanel: Braşov - Sighişoara  
Rehabilitation of the railway line Braşov - Simeria, component Part of the IV Pan-European Corridor, for the trains circulation with maximum speed of 160 km/h,  
Section: Braşov - Sighişoara

Denumire desen / Drawing Title:  
STATIA C.F. VANATORI / RAILWAY STATION VANATORI  
CLADIREA STATIEI / STATION BUILDING  
SCHEMA COLOANELOR - INSTALATIE INCALZIRE INTERIOARA /  
INDOOR HEATING INSTALLATION - COLUMNS SCHEME.

Codificare / Codification System	Scara / Scale 1:50	LOT / LOT	Nr. / No 01 / 01
EA51 01 E 17 DB IV 00 8 1 047 0			