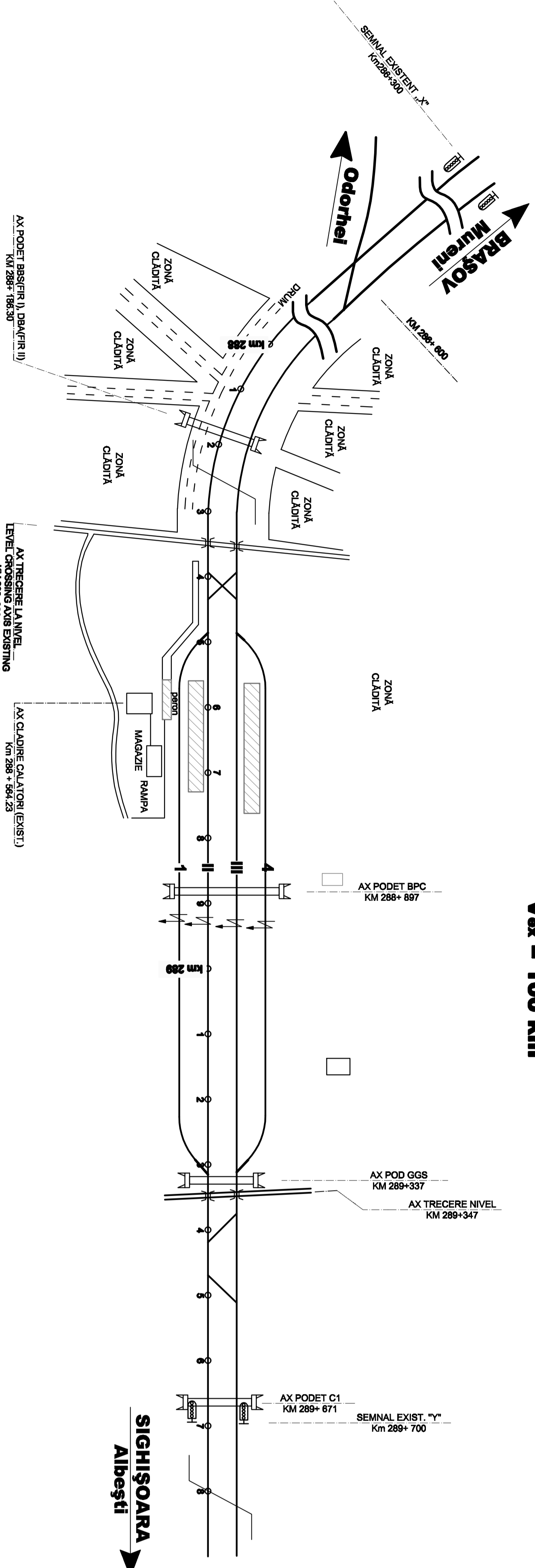


STIPA	TRIMPE DE CALATORIE (GAZ)
MAXIM	MEDIU
VANTORI	80

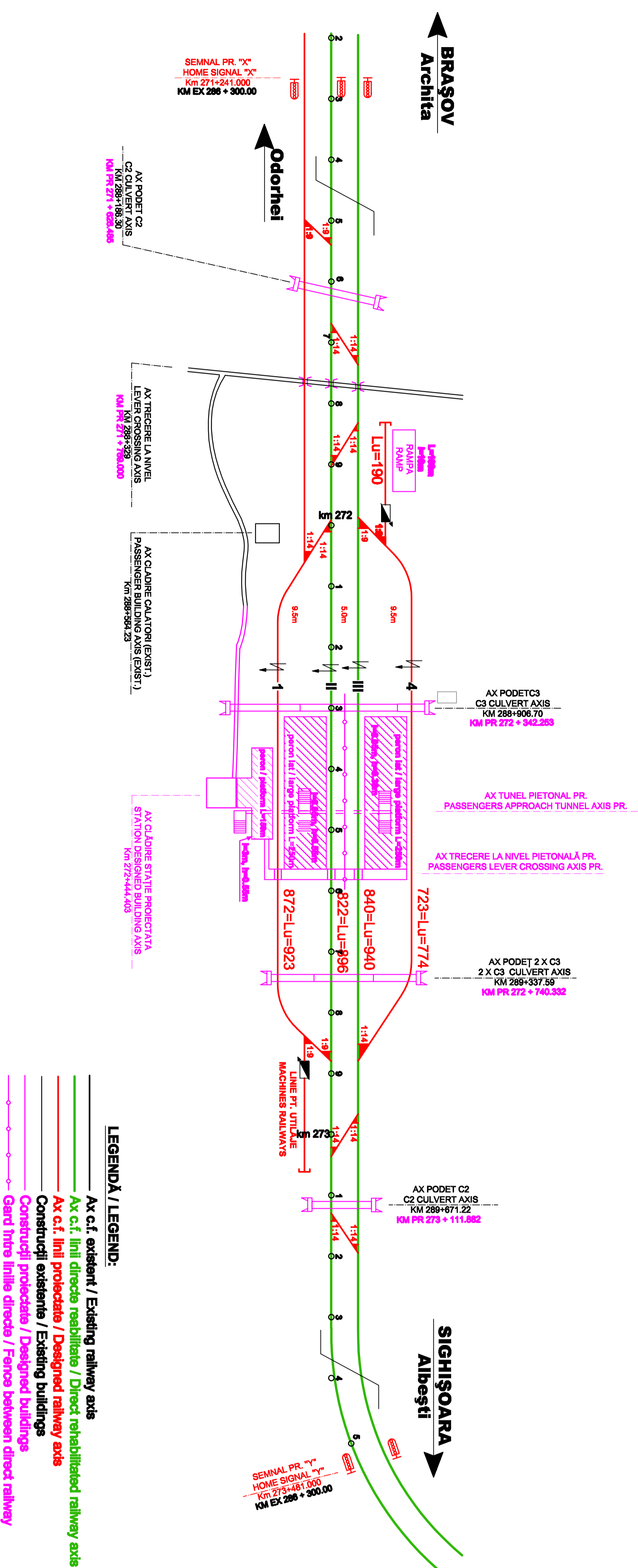


VÂNĂTORI - situația existentă

V_{max} = 100 km

VÂNĂTORI - situația proiectată

V_{pr} = 160 km/h



LEGENDA / LEGEND:

	AX c.c. existent / Existing railway axis
	AX c.c. linii directe reabilitate / Direct rehabilitated railway axis
	AX c.c. linii proiectate / Planned railway axis
	Construcții existente / Existing buildings
	Construcții noi / New buildings
	Granițe între linii directe / Fence between direct railway

D					
C					
B					
A					
Indice Index	Data Date	Modificarea Modification/Revision	Proiectant Designer	Aprobat Consultant Approved Consultant	Aprobat CFR Approved CFR
 GUVERNUL ROMANIEI ROMANIAN GOVERNMENT			 PROIECT FINANȚAT DE UNIUNEA EUROPEANĂ EUROPEAN UNION FINANCED PROJECT		

CLIENT / CLIENT

C.N.C.F. "C.F.R." - S.A.

CONSULTANT / CONSULTANT

Aprobat Approved	Șef proiect Project manager	R. Luzzi	12.2011	
Aprobat Approved	Coordonator Secțiune 1 Section 1 Coordinator	C. Gambelli	12.2011	
Verificat Verified	Expert Cheie Key Expert	S. Menichini	12.2011	
Checkat Checked				

SUBCONTRACTANT / SUBCONTRACTOR

Aprobat Approved	Responsabil Subcontractant	A. Stanciu - Dinulescu	12.2011	
Elaborat Elaborated	Proiectant Designer	V. Ispas	12.2011	

Reabilitarea liniei de cale ferată Brașov - Simeria, parte componentă a coridorului IV Pan European, pentru circulația trenurilor cu viteză maximă de 160 km/h,
Tronsoani : Brașov - Sighisoara
 Rehabilitation of the railway line Brașov - Simeria, component Part of the IV Pan-European Corridor, for the trains circulation with maximum speed of 160 km/h,
Section : Brașov - Sighisoara

Project/Project
 2004/RO/6/PP/PA003
Faza / Phase:
 P.Th. / T.D.

Denumire desen / Drawing Title :

Schita Stației / Station Sketch
 Vânători

Codificarea / Codification System

E	A	5	1	0	1	C	1	7	U	Z	T	F	0	0	9	0	0	0	1	1	2
---	---	---	---	---	---	---	---	---	---	---	---	---	---	---	---	---	---	---	---	---	---

Scara / Scale

LOT / LOT

Nr. / No
01 / 01