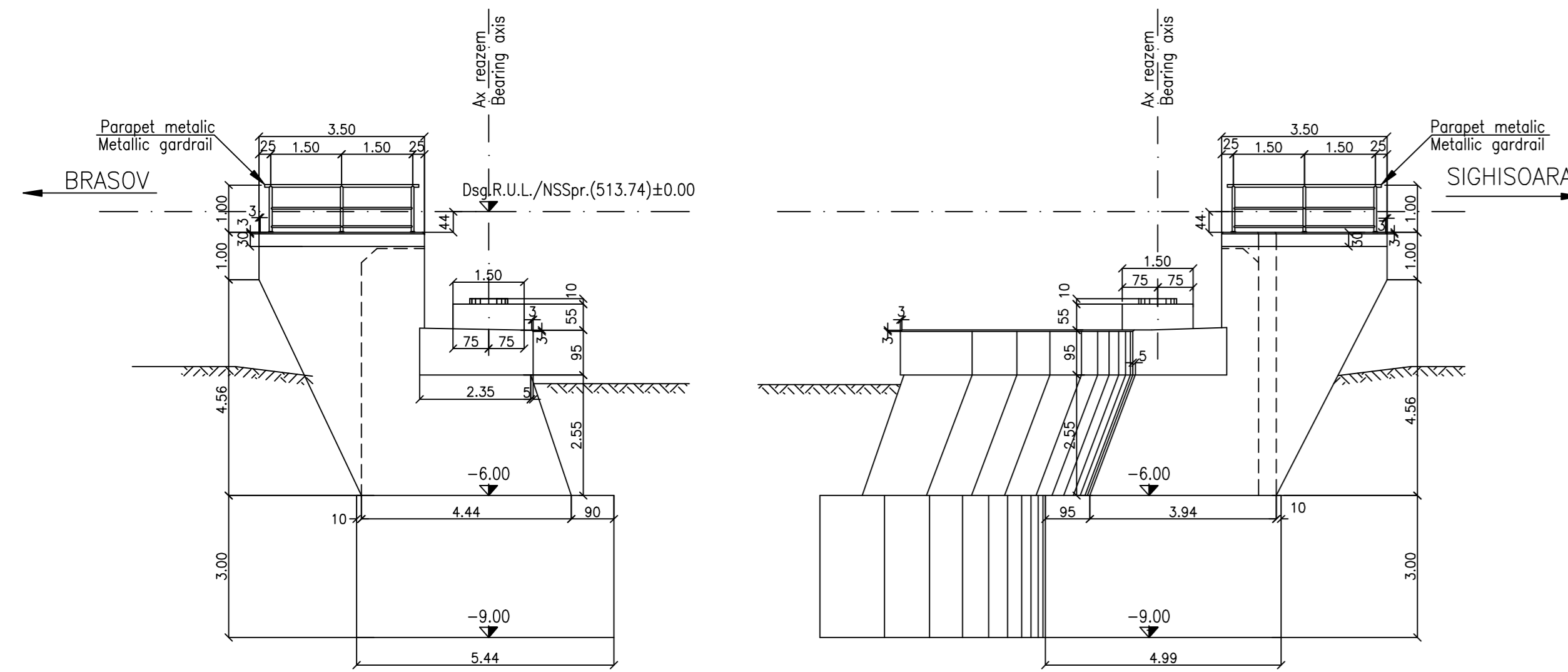
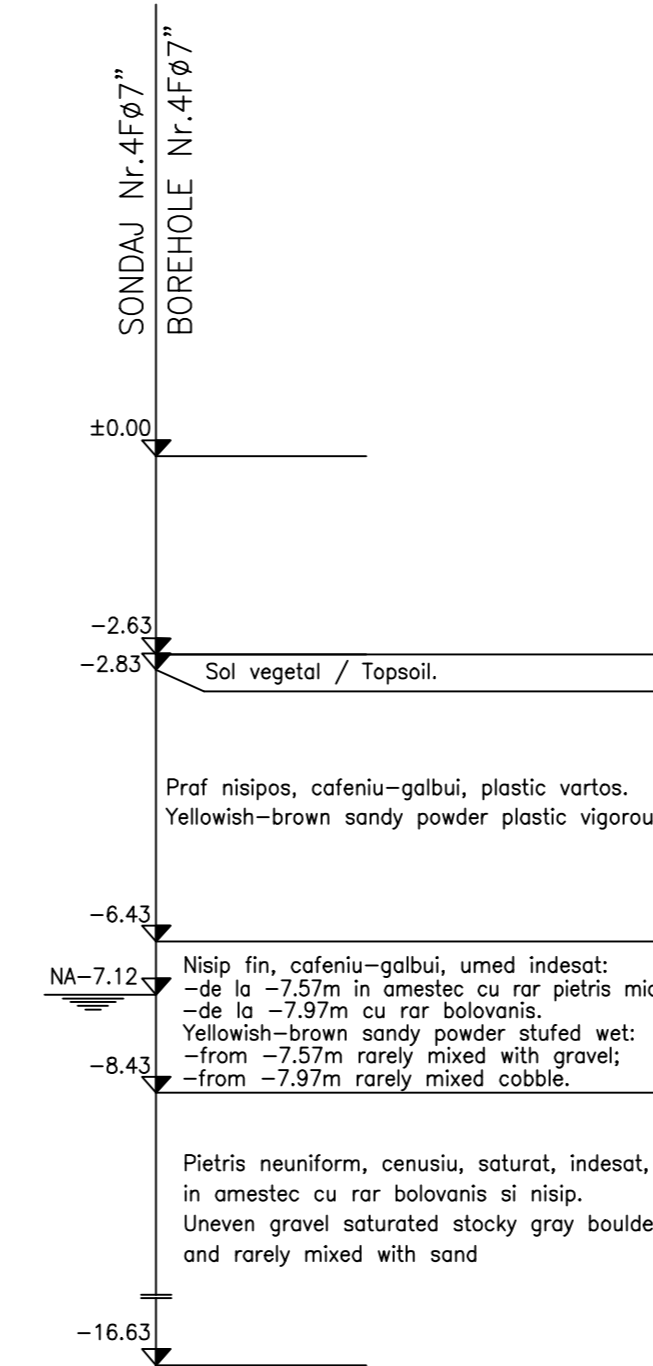
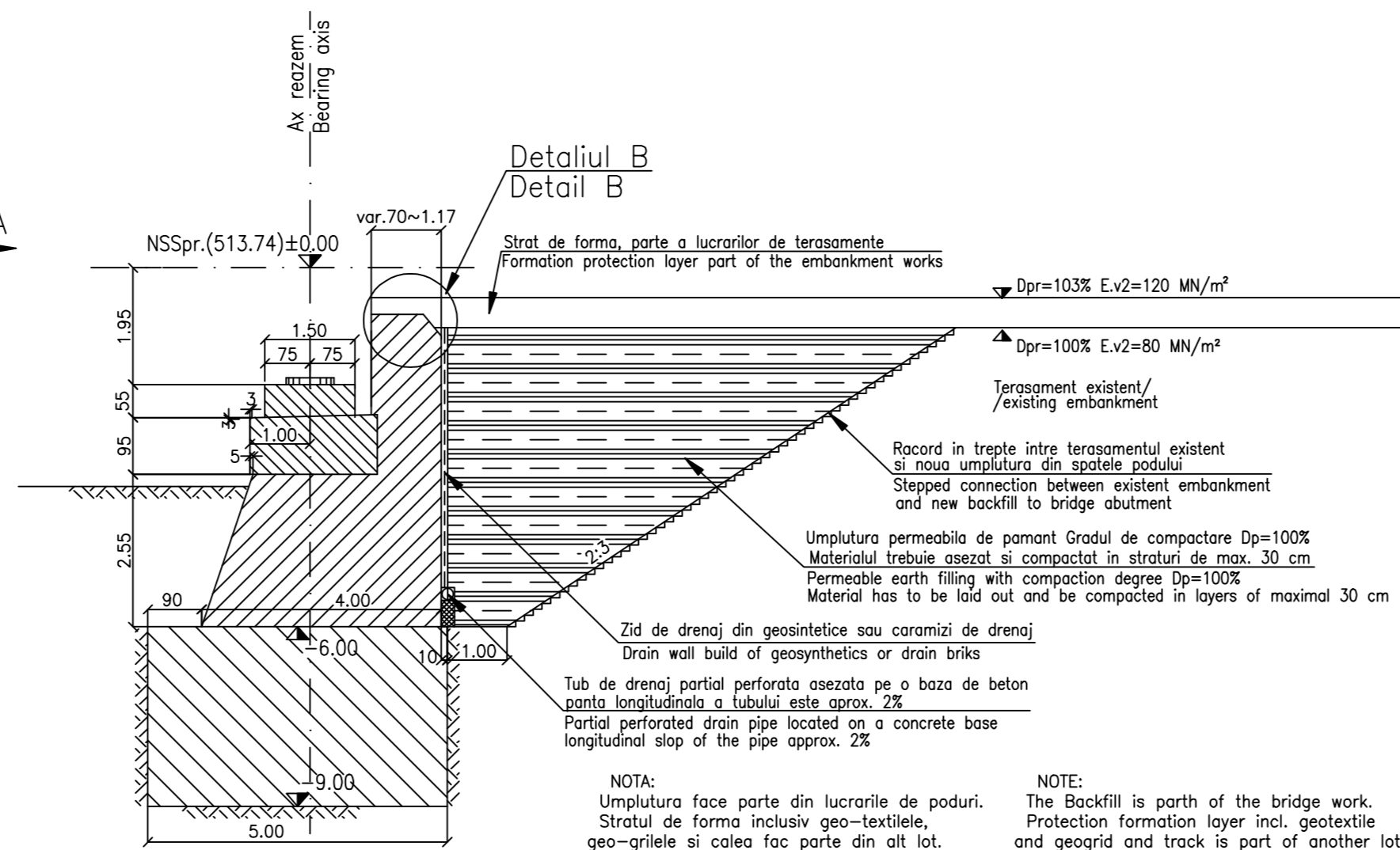


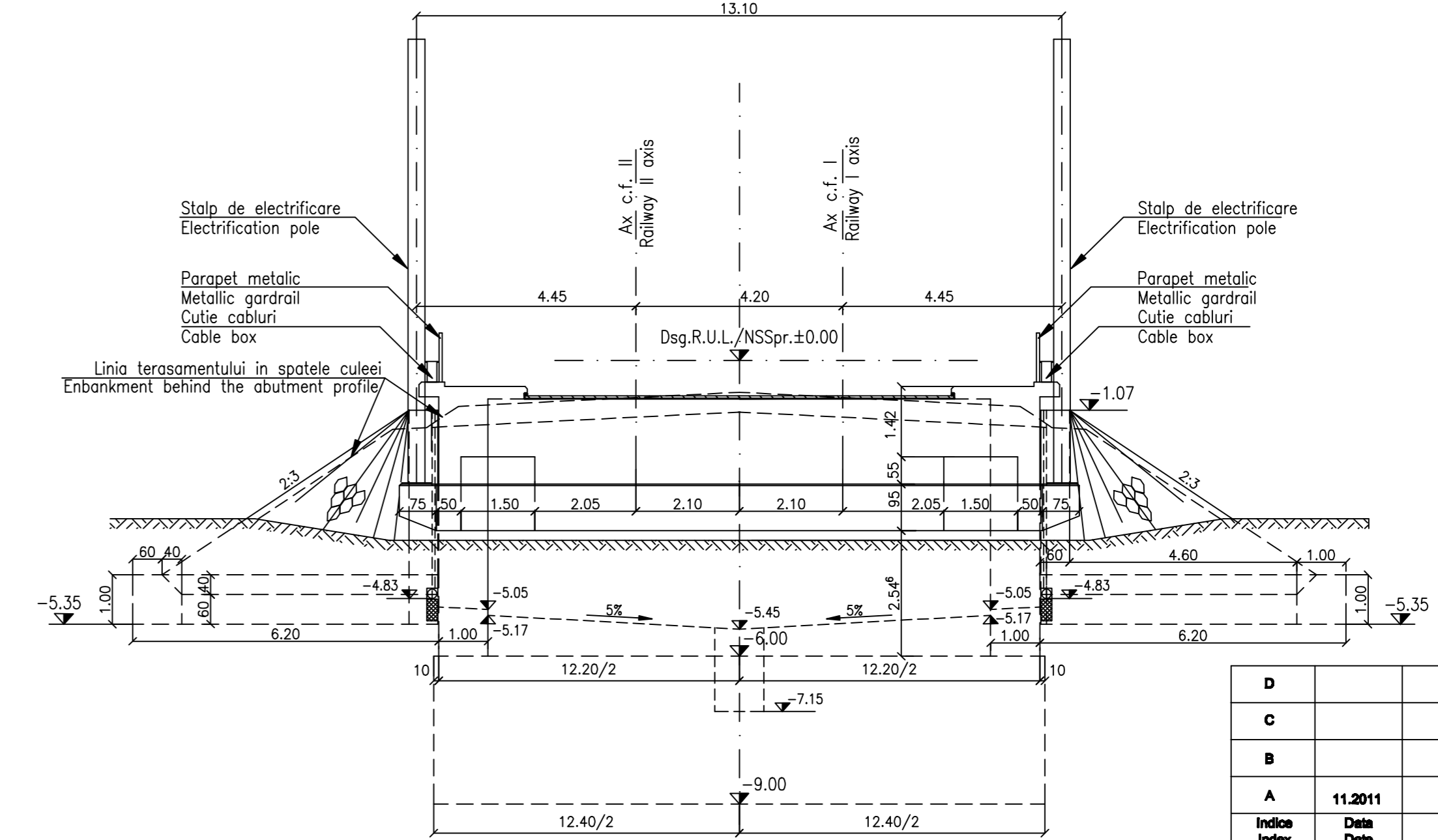
ELEVATIE / ELEVATION A-A



SECTIUNE / SECTION B-B

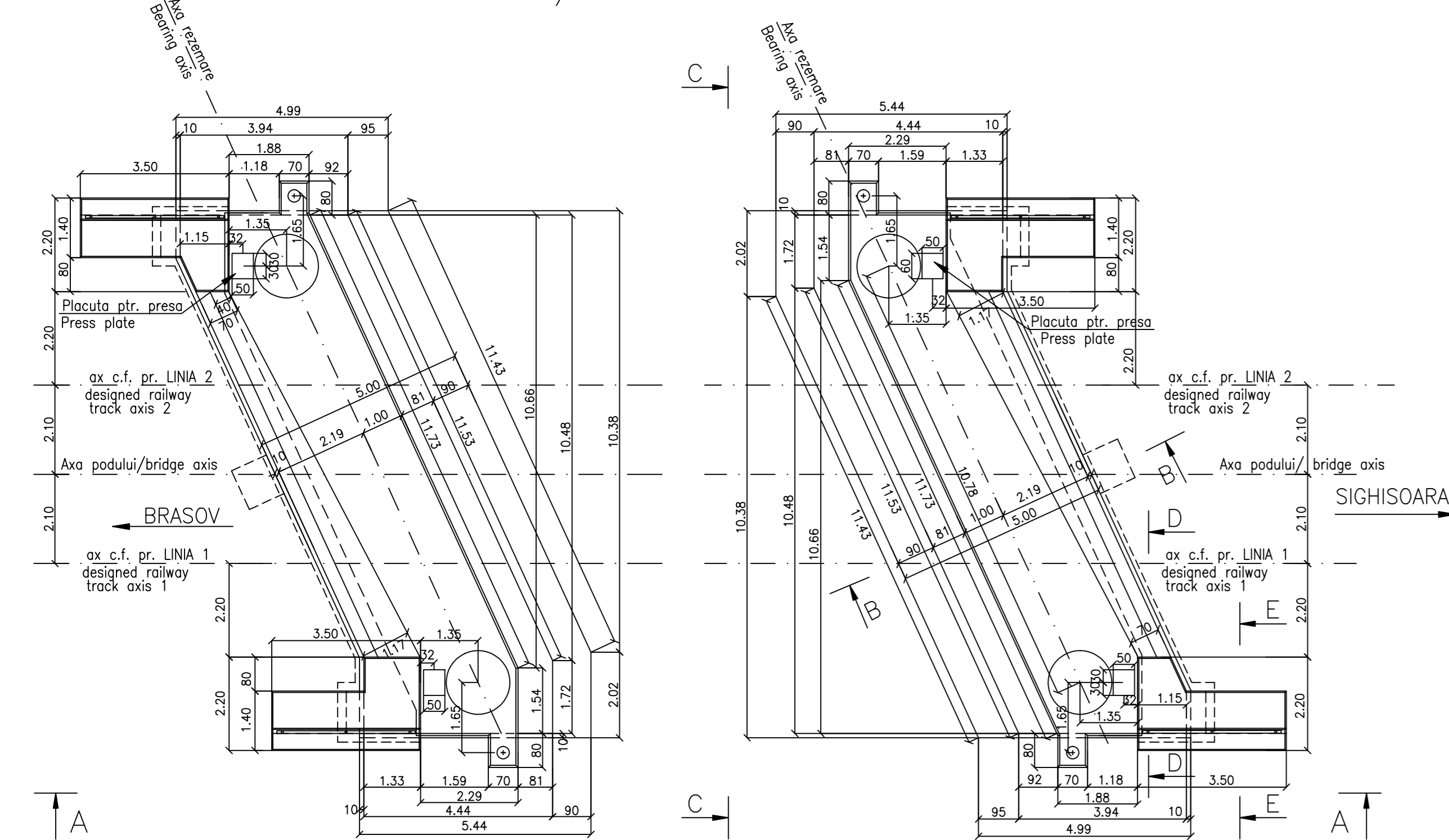


SECTIUNE / SECTION C-C

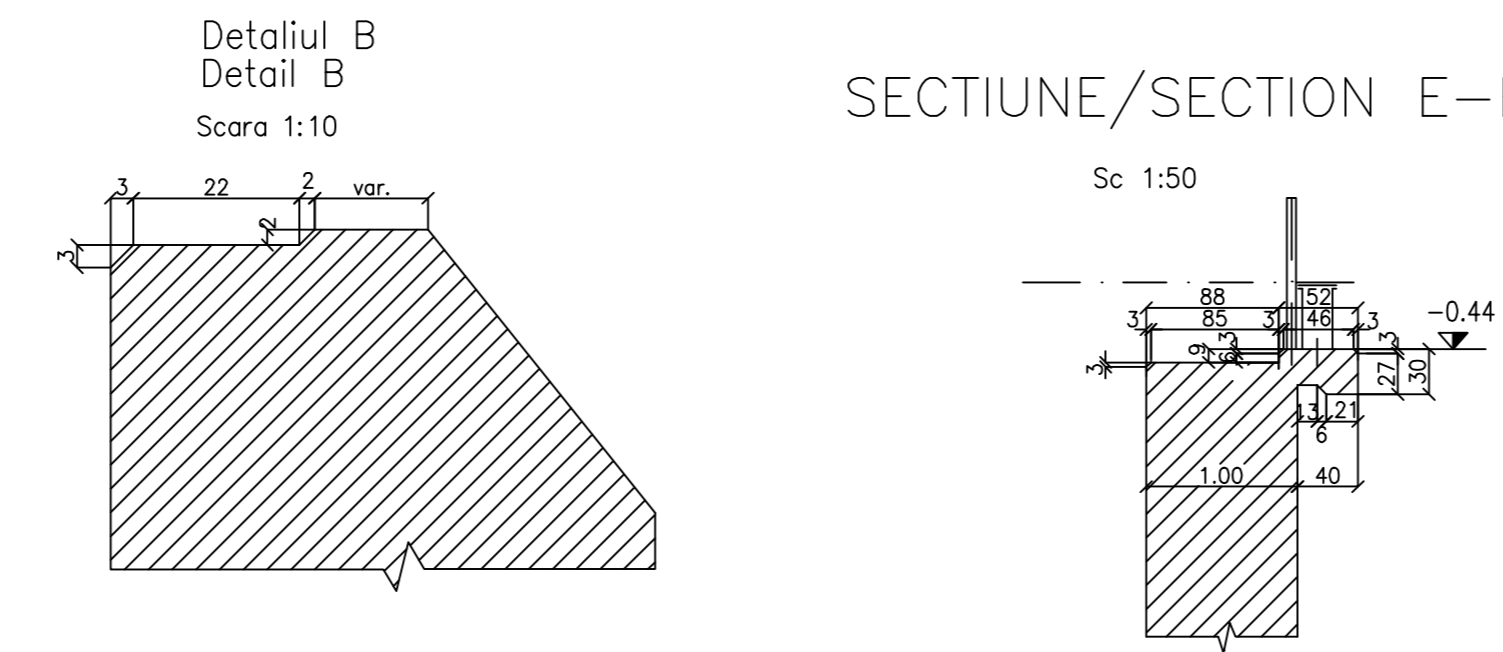


This drawing is forbidden to be copied, lent or used in other purposes than those previously approved by AREX Lider Company as its owner. Se interzice copierea, difuzarea, imprumutarea sau utilizarea in alte scopuri, fara permisiunea AREX Lider Company ca proprietar al desenului.

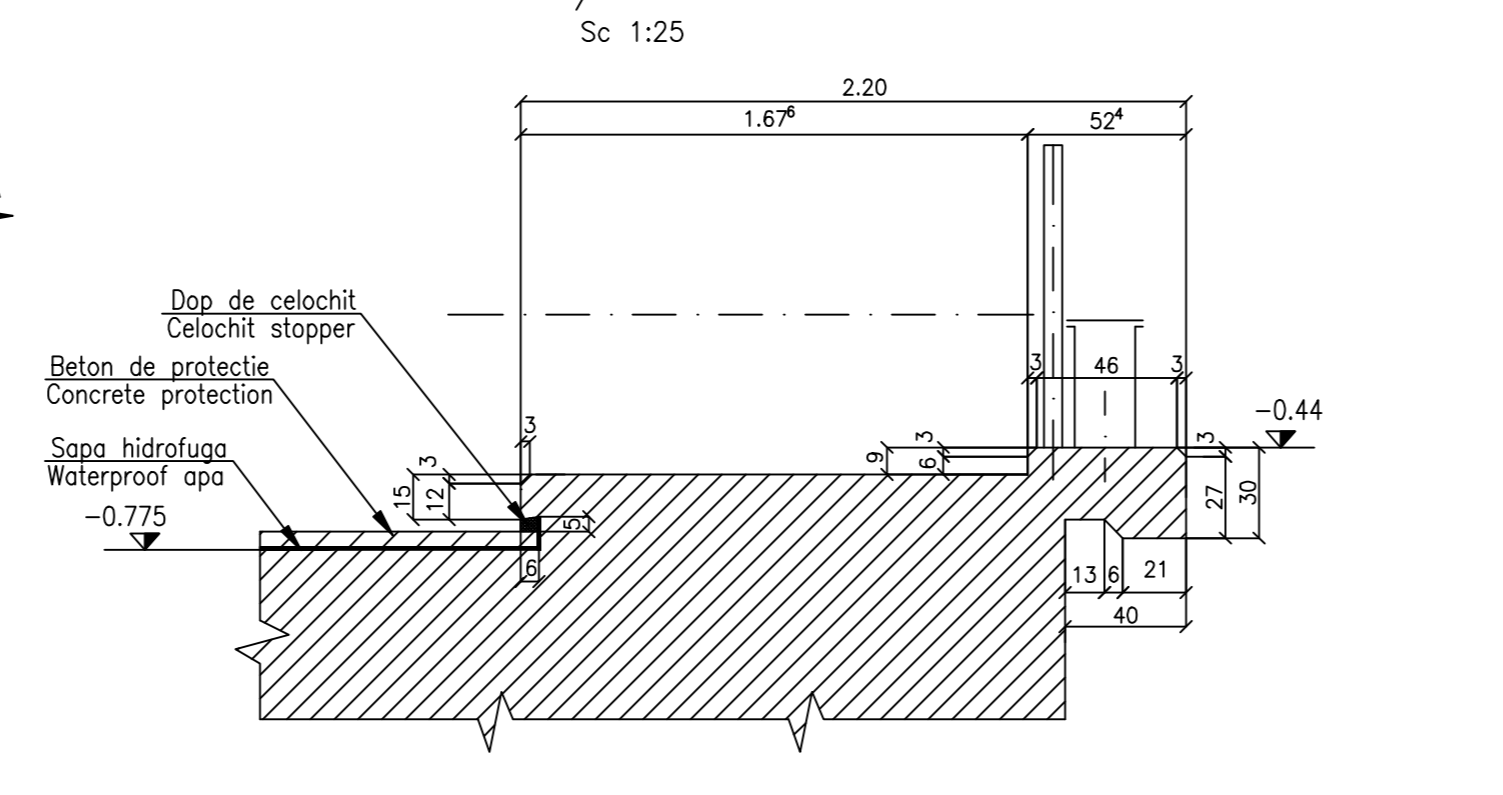
PLAN / PLANE VIEW



SECTIUNE/SECTION E-E



SECTIUNE/SECTION D-D



LEGENDA BETOANELOR/CONCRETE LIST

- Beton armat in cuzineti si in bancheta cuzinetilor
- Beton armat in fundatii indirecte (colone si radiere) si in elevatii
- Beton simplu in fundatii si elevatii aripilor
- Beton de egalizare

In cazul in care temperatura in timpul turnarii este scazuta, se vor folosi cimenturile cu rezistenta initiala mare, R si aditivi acceleratori, iar in cazul turnarii pe timp cald, cimenturile cu rezistenta initiala uzuala, N si aditivi intarziatori (conf. NE 012/2-2010 si tabelului 2 din SR EN 197-1:2002). When the temperature during the casting is low, cements with high initial resistance, R and accelerating additives shall be used and when it is cast during warm weather, cements with common initial resistance, N and delaying additives shall be used (according to the norm NE 012/2-2010 and table 2 for the SR EN197-1:2002).

NOTA

- Prezentul plan s-a intocmit in conformitate cu dispozitia generala.
- Executia partilor superioare ale cuzinetilor, amplasate deasupra banchetei cuzinetilor, se va face numai dupa procurarea aparatelor de reazem.
- Daca la executie se constata ca la nivelul talpii de fundatie este alt teren decat cel indicat in sondaj, sau se constata alte neconcordante intre situatia existenta pe teren si cea din proiect se va anunta proiectantul.
- Podul corespunde la convoaiele de calcul UIC(LM 71 si SW/2).
- La executie se vor respecta cu strictete prevederile din "Normativ pentru producerea betonului", indicativ NE 012/1-2007 si "Normativ pentru producerea betonului si executarea lucrarilor din beton, beton armat si beton precomprimat. Partea 1: Producerea betonului", indicativ NE 012/2-2010, iar verificarea calitatii lucrarilor si receptionarea lor se va face conform normativului C56-1985.
- Constructia se incadreaza in categoria de importanta B (constructii de importanta deosebita), modelul 1-de asigurare a calitatii si clasa de importanta B, conform HG 766/1997.
- Proiectul va fi verificat la exigentele A4.2; B2.2; D2.2.

NOTE:

- This plan has been drawn up according to the general disposition.
- The upper parts of the bearing placed over the bearing seat shall be built only after the procurement of the bearing blocks. The upper level of the bearings shall be established after the procurement of the bearing blocks depending on the height of the each bearing block type.
- If the execution is found that the sole foundation is another land than that indicated in the survey, or other account discrepancies between the situation on the ground and will announce the project designer.
- The bridge corresponds to the UIC determination convoys (LM71 and SW/2).
- The execution will strictly comply with the provisions of "Practice code for the concrete production and works execution, reinforced and pre-stressed concrete - Part 1: Practice code for concrete production" NE 012/1-2007 and "Practice code for the concrete production and works execution, reinforced and pre-stressed concrete - Part 2: The execution of concrete works." NE 012/2-2010, and the quality and the reception of the works shall be made according to Norm C 56-1985.
- The construction has been classified in B category of importance (high important constructions), model 1-ensuring the quality and class of importance B according to G.O. 766/97.
- The project will be checked in order to comply with the A4.2; B2.2; D2.2 requirements.

ATENTIE/ATTENTION

Provizionarea aparatelor de reazem se va face inaintea executarii cuzinetilor si a banchetei acestora. In cazul in care inaltimea aparatelor de reazem provizionate difera fata de cea considerata in proiect se vor modifica inaltimele pe reazem corespunzator cu noile aparate. The bearing blocks shall be supplied before building the bearings and their seats. In case the height of the supplied bearing blocks differs from that given in the project, the heights on the seats shall be adjusted so as to comply with the new devices.

D					
C					
B					
A	11.2011	Revizua 1 1 Revision	Cristina Vasiliu Projector Designer	Approved Consultant Approved Consultant	Approved CFR Approved CFR
Indice Index	Date Date	Modificari Modification/Revision	Proiectant Designer	Aprobat Consultant Approved Consultant	Aprobat CFR Approved CFR



Aprobat / Approved		Sef proiect / Project manager		R. Liuzza	
Aprobat / Approved		Coordonator Sectiune 1 / Section 1 Coordinator		C. Gambelli	
Verificat / Checked		Expert Cheie / Checking Expert		V.Kalidromitis	

Aprobat / Approved		Responsabil Subcontractant / Subcontractant Responsible		A. Dinulescu Stanclu	
Intocmit / Elaborated		Proiectant / Designer		Cristina Vasiliu	

Reabilitarea liniei de cale ferata Brasov - Simeria, parte componenta a coridorului IV Pan European, pentru circulatia trenurilor cu viteza maxima de 160 km/h, Tronsoanel: Brasov - Sighisoara  
Rehabilitation of the railway line Brasov - Simeria, component Part of the IV Pan-European Corridor, for the trains circulation with maximum speed of 160 km/h, Section: Brasov - Sighisoara

Denumire desen / Drawing Title:  
**INTERVAL / SECTION STUPINI-BOD**  
**Pod Ghimbasi Km179+087.689 - D=45.00m - PLAN COFRAJ CULEI**  
**Ghimbasi bridge Km 179+087.689 - ABUTMENTS FORMWORK PLANE**

Codificare / Codification System		Scara / Scale 1:100 1:50		LOT / LOT		Nr. / No 01 / 01	
E	A	5	1	0	1	E	0
0	4	B	B	P	V	0	0
2	2	0	0	5	1		