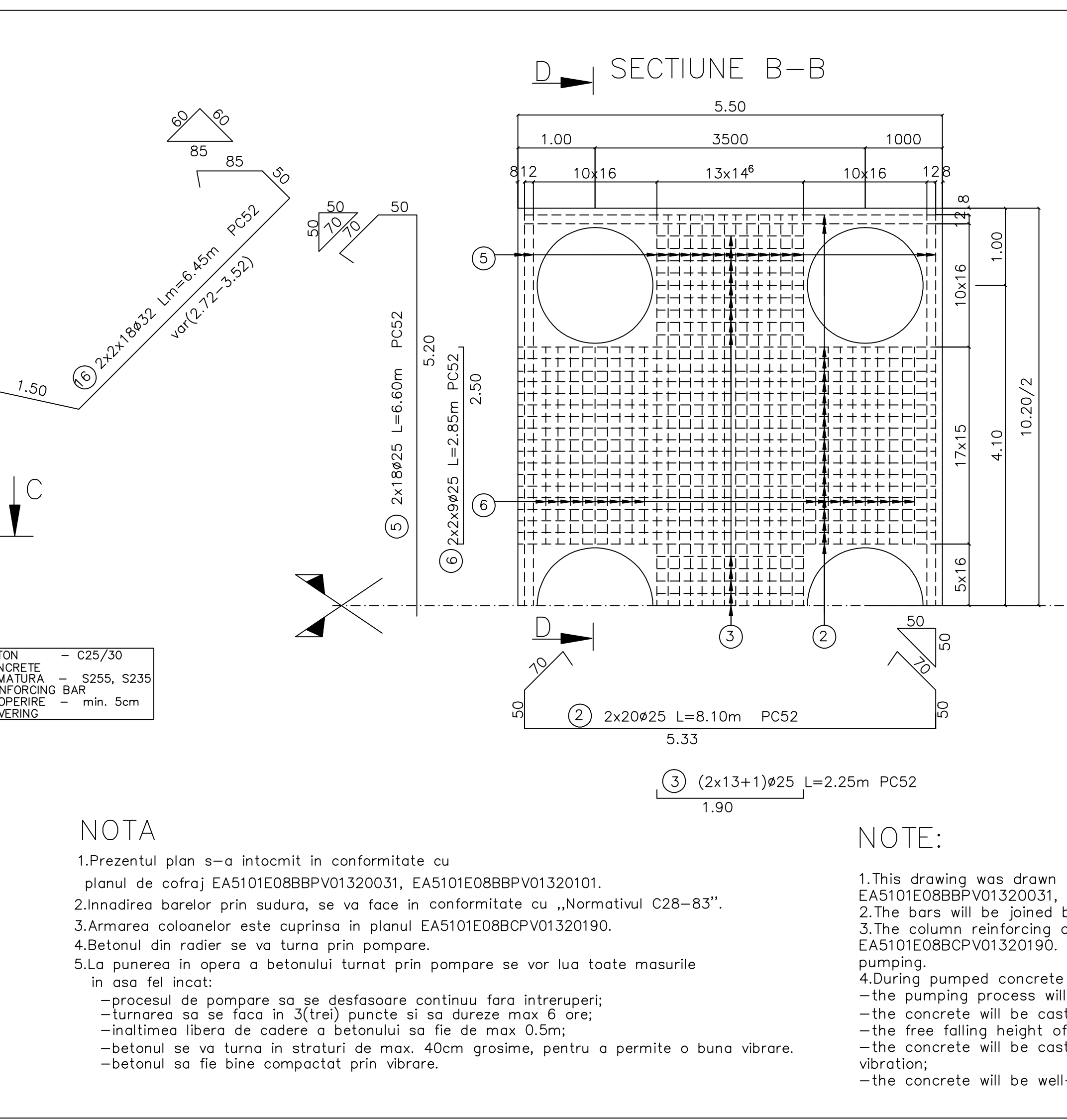
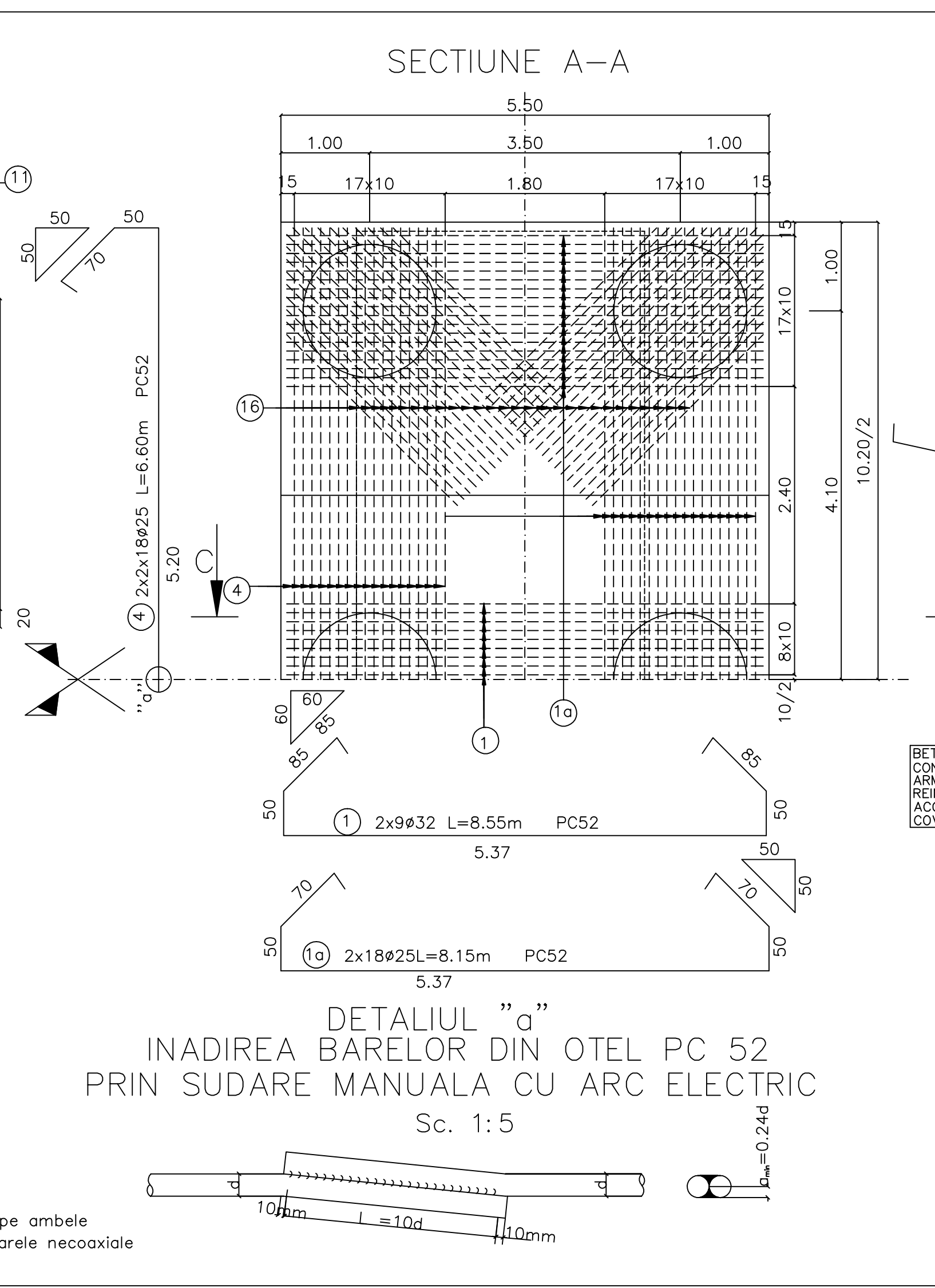
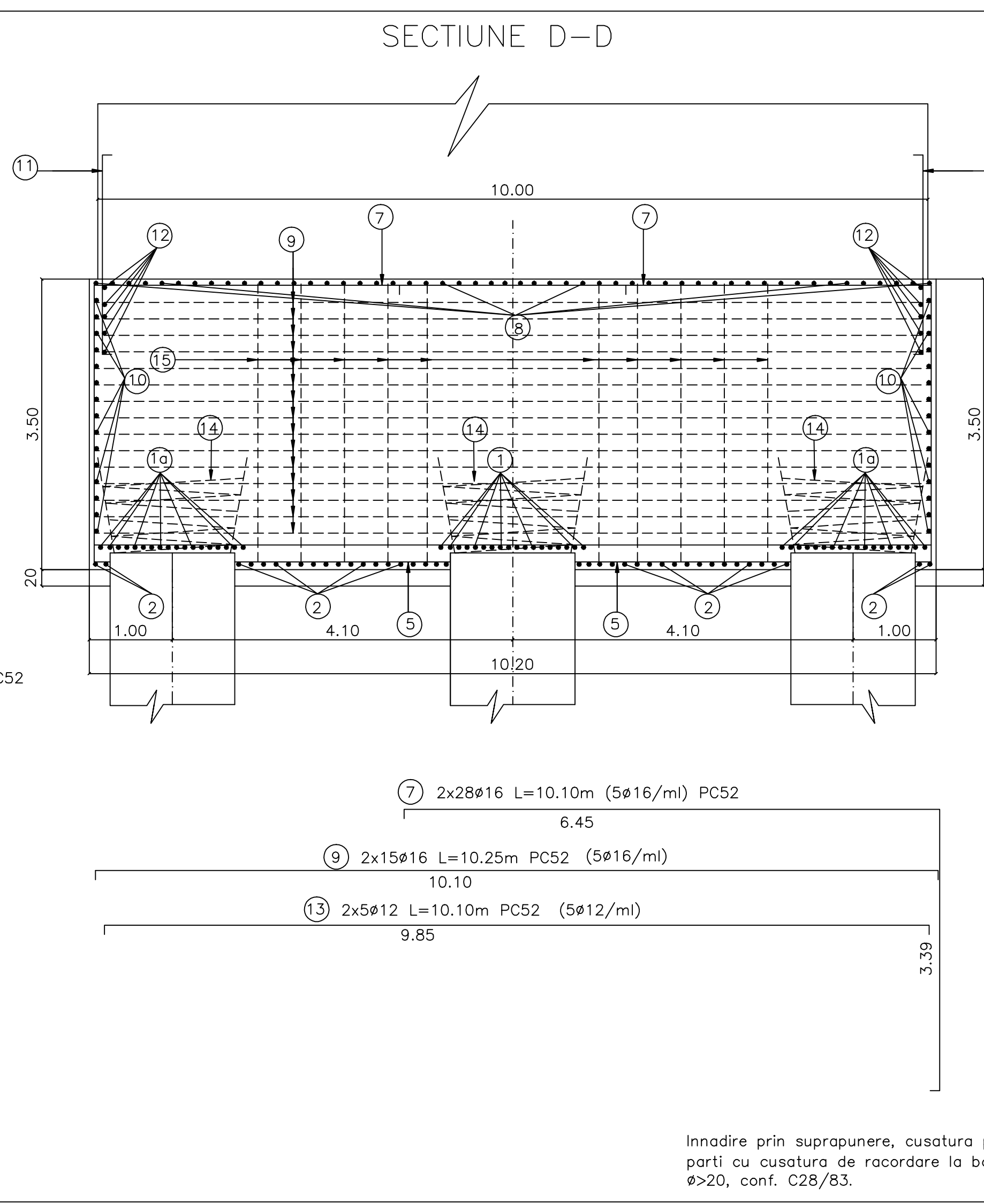
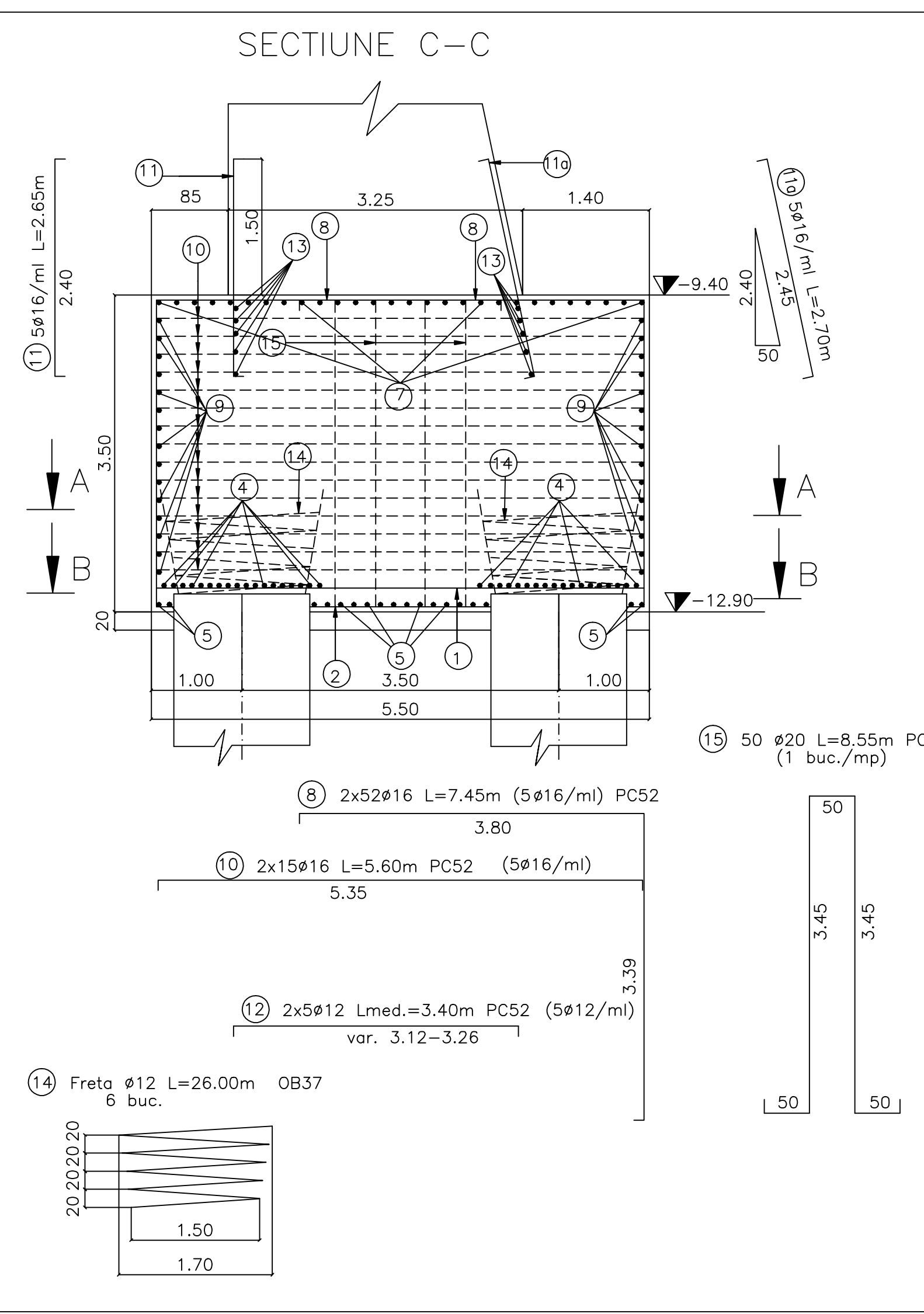


Se interzice copierea, difuzarea, imprumutarea sau utilizarea in alte scopuri, fara permisiunea Arex Lider Company ca proprietar al desenului.  
This drawing is forbidden to be copied, lent or used in other purposes than those previously approved by Arex Lider Company as its owner.

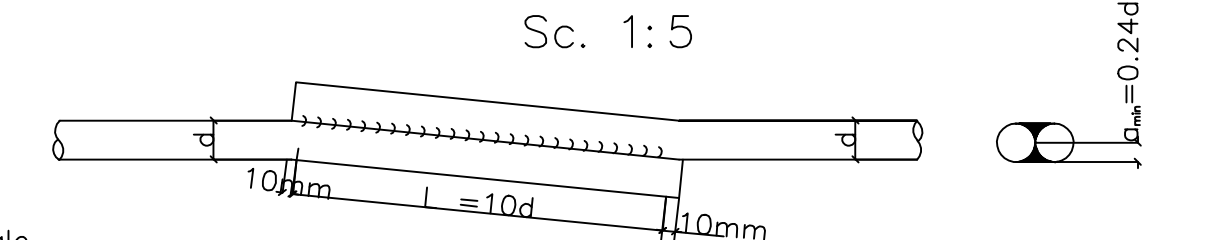


MASURATOAREA OTELULUI BETON NECESAR PENTRU ARMAREA RADIERULUI

Marca	Diametrul Bucati asemnati	Lungimi Totale				
		OB 37 S 255 ø12	S 355 ø12	S 345 ø16	ø20	S 335 ø32
1	32 18	8.55				
1a	25 36	8.15				293.40
2	25 40	8.10				324.00
3	25 27	2.25				60.75
4	25 72	6.60				475.20
5	25 36	6.60				237.60
6	25 36	2.85				102.60
7	16 56	10.10			565.60	
8	16 104	7.45			774.80	
9	16 30	10.25			307.50	
10	16 30	5.60			168.00	
11	16 88	2.65			233.20	
11a	16 56	2.70			151.20	
12	12 10	3.40	34.00			
13	12 10	10.10		101.00		
14	12 6	26.00	156.00			
15	20 50	8.55			427.50	
16	32 72	6.45				464.40
Lungimi pe diametru		156.00	135.00	2200.30	427.50	1493.55
Greutate pe ml.		0.888	0.888	1.578	2.470	3.853
Greutate pe diam.		139	120	3473	1060	5755
Total pe calitate		139		14313		
TOTAL				14452		
Sudura 2% (kg)				290		
Pierderi 5% (kg)				723		
GREUTATE TOTALA(kg)				15465		

PENTRU 2 RADIERE: 2x15465 kg =30930 kg

DETALIUL "d"  
INADIREA BARELOR DIN OTEL PC 52  
PRIN SUDARE MANUALA CU ARC ELECTRIC  
Sc. 1:5



NOTA

- Prezentul plan s-a intacmit in conformitate cu planul de cofraj EA5101E08BBPV01320031, EA5101E08BBPV01320101.
- Innadirea barelor prin sudura, se va face in conformitate cu „Normativul C28-83”.
- Armarea coloanelor este cuprinsa in planul EA5101E08BPCPV01320190.
- Betonul din radier se va turna prin pompare.
- La punerea in opera a betonului turnat prin pompare se vor lua toate masurile in asa fel incat:
  - procesul de pompare sa se desfasoare continuu fara intreruperi;
  - turnarea sa se faca in 3(trei) puncte si sa dureze max 6 ore;
  - inaltimea libera de cadere a betonului sa fie de max 0.5m;
  - betonul se va turna in straturi de max. 40cm grosime, pentru a permite o buna vibrare.
  - betonul sa fie bine compactat prin vibrare.

NOTE:

- This drawing was drawn up according to the shuttering plan EA5101E08BBPV01320031, EA5101E08BBPV01320101.
- The bars will be joined by welding according to "Norm C28 - 83".
- The column reinforcing can be found in drawing EA5101E08BPCPV01320190. The concrete in the raft will be cast by pumping.
- During pumped concrete placement, all measures will be taken so that:
  - the pumping process will be continuous, without any interruption;
  - the concrete will be cast in 3 (three) points and will last max. 6 hours;
  - the free falling height of concrete will be max. 0.5m;
  - the concrete will be cast in max. 40 cm thick layers to allow good vibration;
  - the concrete will be well-compacted by vibration.

D					
C					
B					
A					
Index	Date	Modificari/Revision	Proiectant Designer	Aprobat Consultant Approved Consultant	Aprobat CFR Approved CFR
				<b>PROIECT FINANȚAT DE UNIUNEA EUROPEANĂ</b> <b>EUROPEAN UNION FINANCED PROJECT</b>	
<b>CLIENT / CLIENT</b>		<b>C.N.C.F. "C.F.R." - S.A.</b>			
<b>CONSULTANT / CONSULTANT</b>		<b>TECNIC</b> Consulting Engineers		Date Date Semnată Signature	
Aprobat Approved	Şef proiect Project manager	R. Liuzza		03.2012	
Aprobat Approved	Coordonator Secțiune 1 Section 1 Coordinator	C. Gambelli		03.2012	
Verificat Checked	Expert Orale Checking Expert	V. Kallidromitis		03.2012	
<b>SUBCONTRACTANT / SUBCONTRACTOR</b>					
Aprobat Approved	Responsabil Subcontractant Subcontractant Responsible	A.Stancu - Dinulescu		03.2012	
Intocmit Elaborated	Proiectant Designer	Maria Campan		03.2012	
<b>Reabilitarea liniei de cale ferata Braşov - Simeria, parte componentă a coridorului IV Pan European, pentru circulația trenurilor cu viteză maximă de 160 km/h, Tronsoanel: Braşov - Sighişoara</b> <b>Rehabilitation of the railway line Braşov - Simeria, component Part of the IV Pan-European Corridor, for the trains circulation with maximum speed of 160 km/h, Section : Braşov - Sighişoara</b>					
<b>Denumire desen / Drawing Title : Fekloara - Apata</b> <b>Pod km. 200+477,804 D=18.00+45.00+18.00m</b> <b>Plan armare radier cutel</b> <b>Bridge km. 200+477,804 D=18.00+45.00+18.00m</b> <b>Plan for raft abutments reinforcement</b>					
<b>Codificare / Codification System</b>		<b>Scara / Scale</b> 1:50		<b>LOT / LOT</b>	
<b>E A 5 1</b>		<b>0 1 E</b>		<b>0 8 B C P V 0 1 3 2 0 2 0 0</b>	